

BLOSSOM HILL TERRACE-UNIT NO.4

LOCATED IN THE N.W. 1/4 SEC. 20, T.37 S., R.1 W., W.M.
JACKSON COUNTY, OREGON

DEDICATION

KNOW ALL MEN BY THESE PRESENTS, That we, Homesites Incorporated, an Oregon Corporation, are the owners in fee simple of the lands hereon described, and that we have subdivided the same into lots, blocks and streets as shown hereon, and the number and size of the lots and lengths of all lines are plainly set forth, and that this plat is a correct representation of the said subdivision, and we do hereby dedicate to the public for public use all streets and utility easements, shown hereon, and we do hereby designate said subdivision as, **BLOSSOM HILL TERRACE, UNIT NO. 4** subdivision.

IN WITNESS WHEREOF, we have hereunto set our hands and seals this 28 day of May, 1965.
Homesites Incorporated: Clifford E. Lewis Secretary
Roy P. Wilkes President

STATE OF OREGON } SS
County of Jackson

May 28 A.D. 1965.

Personally appeared the above named Roy P. Wilkes, President and Clifford E. Lewis, Secretary of Homesites Incorporated, an Oregon Corporation, and acknowledged the foregoing instrument to be their voluntary act and deed.

Before me:

Sharon K. Buffington
Notary Public for Oregon

My Commission expires the 17 day of July, 1966.

I certify that, pursuant to authority granted to me by the Medford Planning Commission in open meeting of June 10th 1965, the above plat is hereby approved by the Medford Planning Commission. Dated this 15th day of July, 1965.

Attest: Wagon Stambaugh
President

David R. Brashear
Secretary

Examined and approved this 1st day of July, 1965.

John Shrage
City Engineer

Examined and approved this 6th day of July, 1965.

David W. Hatten
County Assessor

All taxes paid in full to date this the 6 day of July, 1965.

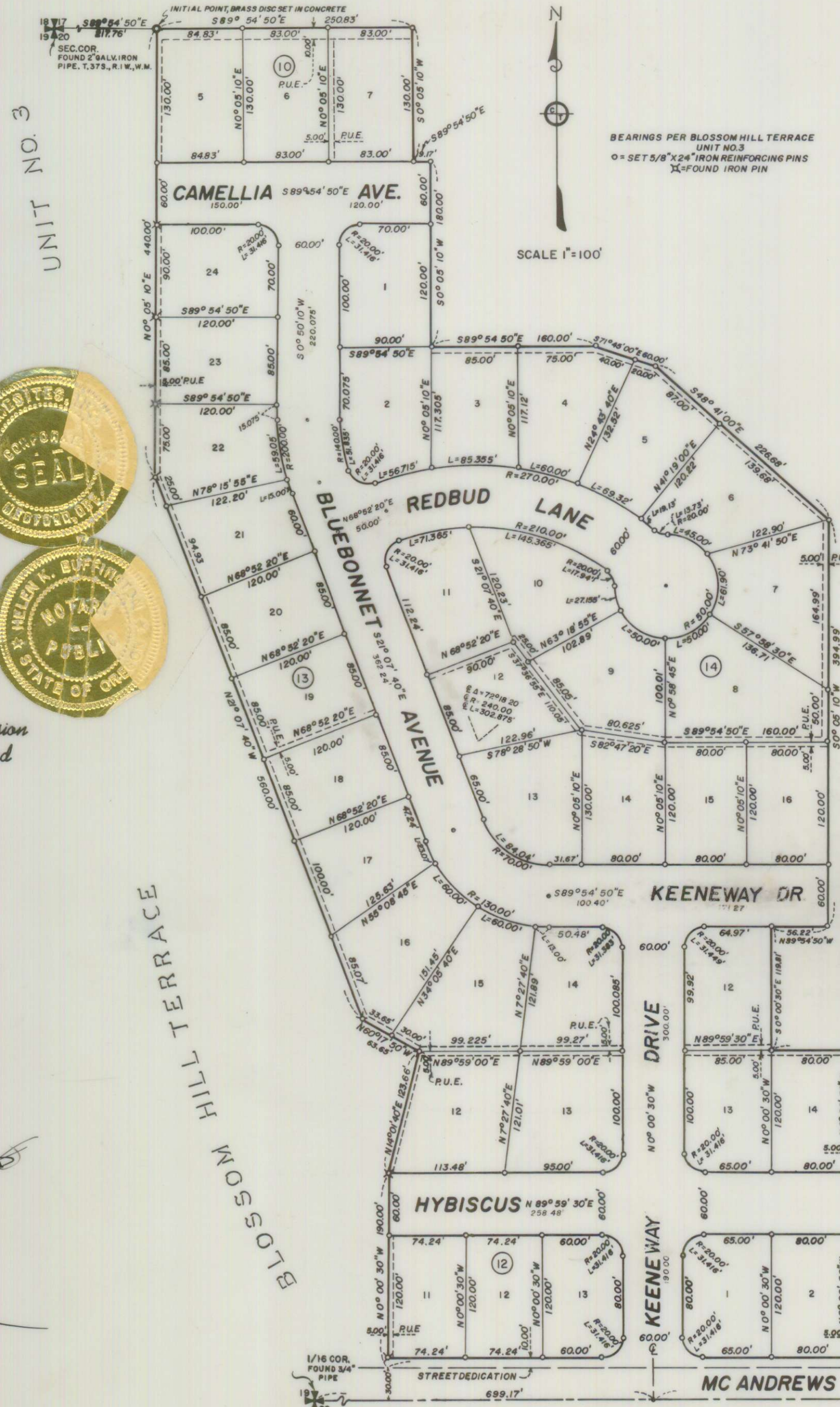
Clifford E. Lewis
County Sheriff

629675

Filed for record this the 8 day of July, 1965, at 4:47 O'Clock P. M., and recorded in Volume 10 of plats at page 7 of records of Jackson County, Oregon.

Emmadel
County Clerk

By Emmadel
Deputy



SURVEYOR'S CERTIFICATE

STATE OF OREGON } SS
County of Jackson

I, J. A. Hoffbuhr a duly registered surveyor of the State of Oregon, being first duly sworn, do hereby certify that I have correctly surveyed and marked with the proper monuments as provided by law the tract of land hereon shown and the said plat is a correct representation of the same, and the following is an accurate description of the boundary lines:
COMMENCING AT THE SECTION CORNER COMMON TO SECTIONS 17, 18, 19 AND 20, TOWNSHIP 37 SOUTH, RANGE 1 WEST OF THE WILLAMET MERIDIAN, JACKSON COUNTY, OREGON; THENCE ALONG THE NORTH LINE OF SAID SECTION 20, SOUTH 89° 54' 50" EAST 217.76 FEET TO THE MOST NORTHERLY NORTHEAST CORNER OF BLOSSOM HILL TERRACE, UNIT NO. 3 (RECORDED SUBDIVISION) SAID POINT BEING THE INITIAL POINT, A BRASS DISC SET IN CONCRETE AND THE TRUE POINT OF BEGINNING; THENCE SOUTH 89° 54' 50" EAST 250.83 FEET; THENCE SOUTH 0° 05' 10" WEST 130.00 FEET; THENCE SOUTH 89° 54' 50" EAST 19.17 FEET; THENCE SOUTH 0° 05' 10" WEST 180.00 FEET; THENCE SOUTH 89° 54' 50" EAST 160.00 FEET; THENCE SOUTH 71° 45' 00" EAST 60.00 FEET; THENCE SOUTH 48° 41' 00" EAST 226.68 FEET; THENCE SOUTH 0° 05' 10" WEST 394.99 FEET; THENCE NORTH 89° 54' 50" WEST 56.22 FEET; THENCE SOUTH 0° 00' 30" EAST 119.81 FEET; THENCE NORTH 89° 59' 30" EAST 536.025 FEET; THENCE SOUTH 0° 05' 10" WEST 39.80 FEET; THENCE SOUTH 89° 54' 50" EAST 120.00 FEET; THENCE SOUTH 0° 05' 10" WEST 270.00 FEET TO INTERSECT THE NORTH LINE OF MC ANDREWS ROAD; THENCE ALONG THE NORTH RIGHT OF WAY LINE OF SAID MC ANDREWS ROAD, SOUTH 89° 59' 30" WEST 1028.99 FEET TO INTERSECT THE EAST LINE OF BLOSSOM HILL TERRACE, UNIT NO. 3 (RECORDED SUBDIVISION) AND ITS PROJECTION THEREOF; THENCE ALONG SAID EAST LINE AS FOLLOWS: NORTH 0° 00' 30" WEST 190.00 FEET; THENCE NORTH 14° 01' 40" EAST 123.66 FEET; THENCE NORTH 6° 17' 50" WEST 63.65 FEET; THENCE NORTH 21° 07' 40" WEST 560.00 FEET; THENCE NORTH 0° 05' 10" EAST 440.00 FEET TO THE INITIAL POINT.

J. A. Hoffbuhr
Surveyor

Subscribed and sworn to before me this 31st day of March, 1965

My commission expires the 15th day of November, 1966.



Mura Mills
Notary public for Oregon

I hereby certify that this tracing is an exact copy of the original plat filed with the County Clerk

J. A. Hoffbuhr
Surveyor

