

THAMES AND FORDYCE SUBDIVISION

PORTION OF LOTS 17 & 18 OF STEWART ACRES
IN THE N. 1/2 OF THE S.E. 1/4 OF SEC. 16, T. 37 S., R. 1W. W.M., OREGON



DEDICATION

SURVEYOR'S CERTIFICATE

KNOW ALL MEN BY THESE PRESENTS, that we Norman S. Thames, Mildred H. Thames, Elwin J. Fordyce, Marjorie J. Fordyce, Alvin G. Edwards, Enid L. Edwards, Leonard T. Howe and Mary E. Howe are the owners in fee simple of the lands hereon described and that we have subdivided the same into lots, blocks and streets as shown hereon, and the number and the size of the lots and the lengths of all lines are plainly set forth and that this plat is a correct representation of the said subdivision and we do hereby dedicate to the public for public use all streets shown hereon, and we do hereby designate said subdivision as THAMES AND FORDYCE SUBDIVISION.
IN WITNESS WHEREOF we have hereunto set our hands and seals this _____ day of _____ 1965

Norman S. Thames
Mildred H. Thames
Elwin J. Fordyce
Marjorie J. Fordyce
Alvin G. Edwards
Enid L. Edwards
Leonard T. Howe
Mary E. Howe

STATE OF OREGON }
County of Jackson } ss

January 27, AD. 1965
Personally appeared the above named, Norman S. Thames, Mildred H. Thames, Elwin J. Fordyce, Marjorie J. Fordyce, Alvin G. Edwards, Enid L. Edwards, Leonard T. Howe and Mary E. Howe and acknowledged the foregoing instrument to be their voluntary act and deed, before me.

Betty Jo Ann Weiss
Notary Public for Oregon

My Commission expires the 9th day of April 1966

Examined and approved by the Jackson County Planning Commission in regular session this 18th day of MAY 1965.

Attest: L. R. Silveira Secretary
Gerald T. Latham President

Examined and recommended for approval by the County Court this the 10th day of MAY 1965.

Jack E. Boyden
County Surveyor

Examined and approved by the Medford Irrigation District in regular session this 27 day of JANUARY 1965

Attest: L. R. Silveira Secretary
2 cop of H. D. Baker President

Examined and approved this 19th day of February 1965

Thad W. Hatten
County Assessor

All taxes paid in full to date this the 25 day of Feb. 1965

W. C. Conrad
County Sheriff

For order of the County Court approving this plat see Volume _____ page _____ of County Commissioners Journal of Proceedings.

By: _____ Deputy
Emy Adell County Clerk

STATE OF OREGON }
County of Jackson } ss
L. E. Ager, a duly registered Surveyor of the State of Oregon, being first duly sworn, do hereby certify that I have correctly surveyed and marked with the proper monuments as provided by law the tract of land hereon shown and the said plat is a correct representation of the same, and the following is an accurate description of the boundary lines: Commencing at a 1/8 inch iron bar set in concrete at the Southeast Corner of Lot 18, Stewart Acres, in Section 16, T. 37 S., R. 1W., W.M., Jackson County, Oregon, which iron bar bears S. 0° 02' 10" E. 1327.65 feet from the East Quarter Corner of said Section; thence N. 89° 46' 25" W. along the South line of said Lot 18, 589.83 feet to a 2 inch iron pipe for the initial point of beginning; thence N. 0° 05' W. 289.64 feet; thence N. 77° 38' W. 47.22 feet; thence N. 0° 05' W. 335.45 feet; thence N. 77° 38' W. 158.79 feet; thence along the arc of a 160.0 foot radius curve left, (the long chord of which bears S. 89° 26' 30" W. 71.57 feet), a distance of 72.19 feet; thence S. 76° 31' W. 129.54 feet; thence S. 13° 29' E. 156.01 feet; thence along the arc of a 96.12 foot radius curve right, (the long chord of which bears S. 6° 47' E. 22.43 feet), a distance of 22.48 feet; thence S. 0° 05' E. 462.90 feet to the South line of said Lot 18; thence S. 89° 46' 25" E. along said line 360.0 feet to the initial point of beginning: Also a road, 60 feet in width, described as follows: Beginning at the Southwest corner of the above described tract; thence N. 89° 46' 25" W. along the South line of said Lot 18, 197.81 feet; thence along the arc of a 230 foot radius curve right 197.53 feet, (the long chord bears N. 65° 10' 13" W. 191.51 feet); thence N. 40° 34' W. 48.24 feet; thence along the arc of a 984.93 foot radius curve right 155.86 feet, (the long chord bears N. 36° 02' W. 155.70 feet); thence N. 31° 30' W. 48.42 feet; thence along the arc of a 924.93 foot radius curve left 147.71 feet, the long chord bears N. 36° 04' 30" W. 147.56 feet; thence N. 40° 39' W. 124.50 feet; thence along the arc of a 20 foot radius curve left 50.81 feet, the long chord bears S. 66° 34' 30" W. 38.21 feet; thence S. 6° 12' E. 7.57 feet; thence along the arc of a 507.46 foot radius curve right 172.26 feet, the long chord bears S. 3° 31' 30" W. 171.44 feet; thence S. 13° 15' W. 58.98 feet; thence along the arc of an 80 foot radius curve right 173.81 feet, the long chord bears S. 75° 29' 30" W. 141.59 feet; thence N. 42° 16' W. 89.26 feet; thence along the arc of a 170 foot radius curve left 152.65 feet, the long chord bears N. 67° 59' 30" W. 147.58 feet; thence S. 86° 17' W. 120.56 feet; thence along the arc of a 20 foot radius curve left 31.50 feet to the Easterly line of Foothills Road; thence N. 3° 57' W. along said Road, 100.0 feet; thence along the arc of a 20 foot radius invert curve right, 31.33 feet; thence N. 86° 17' E. 120.98 feet; thence along the arc of a 230 foot radius curve right 206.53 feet, the long chord bears S. 67° 59' 30" E. 199.66 feet; thence S. 42° 16' E. 89.26 feet; thence along the arc of a 20 foot radius curve left 43.45 feet, the long chord bears N. 75° 29' 30" E. 35.40 feet; thence N. 13° 15' E. 58.98 feet; thence along the arc of a 447.46 foot radius curve left 151.90 feet, the long chord bears N. 3° 31' 30" E. 151.17 feet; thence N. 6° 12' W. 7.57 feet; thence along the arc of an 80 foot radius curve right 203.23 feet, (the long chord bears N. 66° 34' 30" E. 152.82 feet); thence S. 40° 39' E. 124.50 feet; thence along the arc of a 984.93 foot radius curve right 157.29 feet, (the long chord bears S. 36° 04' 30" E. 157.14 feet); thence S. 31° 30' E. 48.42 feet; thence along the arc of a 924.93 foot radius curve left 146.36 feet, (the long chord bears S. 36° 02' E. 146.21 feet); thence S. 40° 34' E. 48.24 feet; thence along the arc of a 170.0 foot radius curve left 146.00 feet (the long chord bears S. 65° 10' 13" E. 141.55 feet); thence S. 89° 46' 25" E. 177.37 feet; thence along the arc of a 20 foot radius curve left 31.52 feet, the long chord bears N. 45° 04' 17" E. 28.36 feet to the West line of the first above described tract; thence S. 0° 05' E. along said line 80.11 feet to the point of beginning. Excepting therefrom that portion within the Medford Irrig. Dist. canal right-of-way.

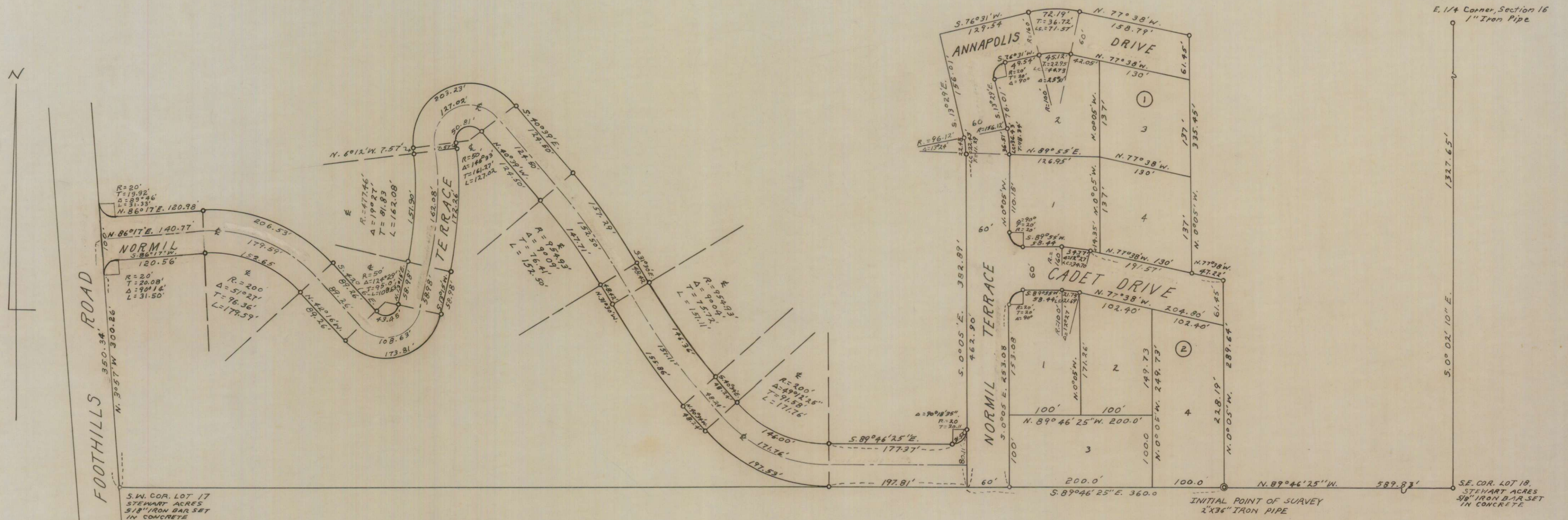
Subscribed and Sworn before me this 31st day of December 1966

Gladys F. Messals
Notary Public for Oregon

My Commission expires the 19th day of November 1968
Filed for record this the 4th day of June 1965 at 2:34 o'clock P.M.
and recorded in Volume 10 of Plats at page 3 of Records of Jackson County.

By: _____ Deputy
Emy Adell County Clerk
I hereby certify that this tracing is an exact copy of the original plat filed with the County Clerk.
L. E. Ager
Surveyor

THAMES AND FORDYCE SUBDIVISION
 PORTION OF LOTS 17 & 18 OF STEWART ACRES
 IN THE N. 1/2 OF THE S.E. 1/4 OF SEC. 16 T. 37 S., R. 1 W., W.M., OREGON
 SCALE 1"=100'



NOTE: Meridian by solar observation
 5/8" iron bars set at all lot and block
 corners unless otherwise designated.

REGISTERED
 OREGON
 LAND SURVEYOR
L. E. Ager
 MARCH 10, 1944
 L. E. AGER
 21

I hereby certify that this tracing is an exact copy of
 the original plat filed with the County Clerk.

L. E. Ager
 Surveyor