

HOMESTEAD PARK - UNIT NO. 3
 LOCATED IN SECTION II, T. 37 S., R. 2 W., W.M.
 CENTRAL POINT, OREGON
DEDICATION

KNOW ALL MEN BY THESE PRESENTS THAT WE THE FIRST NATIONAL BANK OF OREGON, A NATIONAL BANKING ASSOCIATION, AND CLIFFORD E. LEWIS (AS TRUSTEES FOR THE BENEFIT OF GLADES W. CUPP) ALSO W. L. MOORE, NOEL MOORE AND CHARLES DeCARLOW, CO-PARTNERS (DOING BUSINESS AS W.L. MOORE CONSTRUCTION COMPANY) ARE OWNERS IN FEE SIMPLE OF THE LANDS HEREON DESCRIBED AND THAT WE HAVE SUBDIVIDED THE SAME INTO LOTS, BLOCKS AND STREETS AS SHOWN HEREON, AND THE NUMBER AND SIZE OF THE LOTS AND LENGTH OF ALL LINES ARE PLAINLY SET FORTH, AND THAT THIS PLAT IS A CORRECT REPRESENTATION OF THE SAID SUBDIVISION, AND WE DO HEREBY DEDICATE TO THE PUBLIC FOR PUBLIC USE, ALL STREETS AND PUBLIC UTILITY EASEMENTS SHOWN HEREON, AND WE DO HEREBY DESIGNATE SAID SUBDIVISION AS THE **HOMESTEAD PARK - UNIT NO. 3**

IN WITNESS WHEREOF WE HAVE SET OUR HANDS AND SEALS THIS 19 DAY OF March 1965

BY: W. L. Moore (PARTNER) Noel Moore (PARTNER) Charles DeCarlow (PARTNER)
 FIRST NATIONAL BANK OF OREGON, TRUSTEE ON BEHALF OF GLADES W. CUPP.
 BY: Lawrence L. Clark (VICE PRESIDENT AND MANAGER) Clifford E. Lewis (TRUSTEE)
 TRUST OFFICER

STATE OF OREGON } SS
 County of Jackson }
March 19 AD 1965.

PERSONALLY APPEARED THE ABOVE NAMED W.L. MOORE, NOEL MOORE AND CHARLES DeCARLOW, REPRESENTING AN OREGON PARTNERSHIP, (THE W.L. MOORE CONSTRUCTION CO.) ALSO PERSONALLY APPEARED THE ABOVE NAMED CLIFFORD E. LEWIS, TRUSTEE ON BEHALF OF GLADES W. CUPP, AND ACKNOWLEDGED THE FOREGOING INSTRUMENT TO BE THEIR VOLUNTARY ACT AND DEED.
 AND ALSO PERSONALLY APPEARED THE ABOVE NAMED R.C. ROSS AND LAWRENCE L. CLARK, WHO BEING DULY SWORN, SAY THAT THEY ARE THE VICE PRESIDENT AND MANAGER, AND TRUST OFFICER, RESPECTIVELY, OF THE FIRST NATIONAL BANK OF OREGON, A NATIONAL BANKING ASSOCIATION, TRUSTEE, ON BEHALF OF GLADES W. CUPP.
 SAID INSTRUMENT WAS SIGNED ON BEHALF OF SAID NATIONAL BANKING ASSOCIATION BY AUTHORITY OF ITS BOARD OF DIRECTORS, AND THEY ACKNOWLEDGE SAID INSTRUMENT TO BE ITS VOLUNTARY ACT AND DEED. BEFORE ME Jeanette Armstrong MY COMMISSION EXPIRES 24 DAY OF July 1967.

Examined and approved by the City of Central Point Planning Commission
 in regular session this 23 day of Feb 1965.
Robert C. Lentz Secretary Harry S. Tom President

Examined and approved by the Rogue River Valley Irrigation District
 in regular session this 6 day of April 1965.
Harold W. Suter Secretary Otto Bohmert President

Examined and approved this 14 day of April 1965.
Thad W. Hatten County Assessor

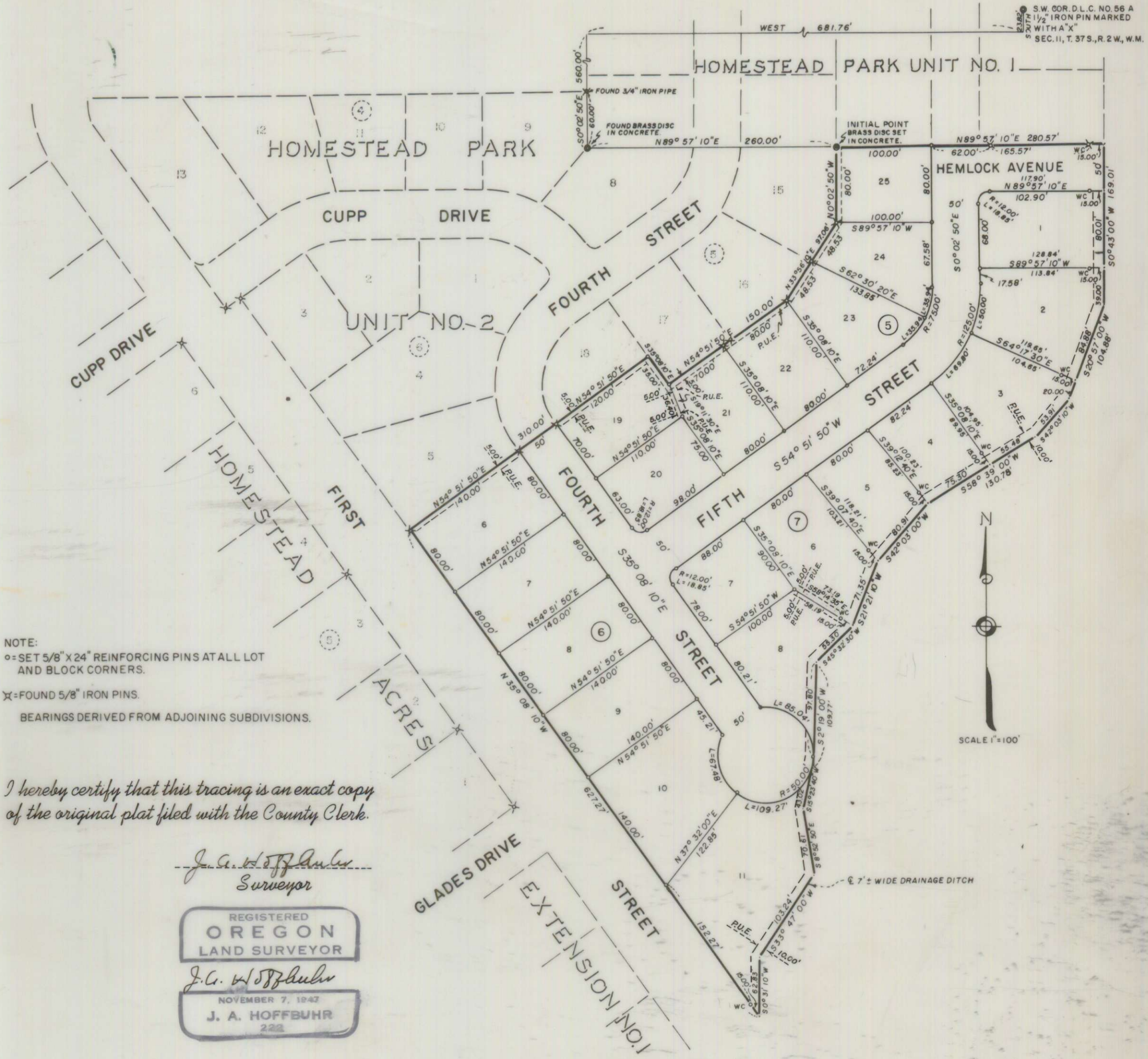
All taxes paid in full to date this the 14 day of April 1965.
Ch. Raymond Long County Sheriff

Examined and recommended for approval by the County Court
 this the 30 day of April 1965.
Jack E. Boyde County Surveyor

For order of the County Court approving this plat see Volume _____ page _____
 of County Commissioners Journal of Proceedings.
 By Samuel Deputy County Clerk

626320
 Filed for record this the 24 day of May 1965, at 10:35 O'Clock A.M. and
 recorded in Volume 10 of plats at page 1 of Records of Jackson County
Samuel County Clerk

By _____ Deputy



NOTE:
 ○ SET 5/8" X 24" REINFORCING PINS AT ALL LOT AND BLOCK CORNERS.
 ✕ FOUND 5/8" IRON PINS.
 BEARINGS DERIVED FROM ADJOINING SUBDIVISIONS.

I hereby certify that this tracing is an exact copy of the original plat filed with the County Clerk.

J. A. Hoffbuhr Surveyor
 REGISTERED OREGON LAND SURVEYOR
J. A. Hoffbuhr
 NOVEMBER 7, 1942
 J. A. HOFFBUHR
 222

STATE OF OREGON } SS
 County of Jackson }

SURVEYOR'S CERTIFICATE

I, J. A. Hoffbuhr a duly registered surveyor of the State of Oregon, being first duly sworn, do hereby certify that I have correctly surveyed and marked with proper monuments as provided by law the tract of land hereon shown and the said plat is a correct representation of the same, and the following is an accurate description of the boundary

lines:-- COMMENCING AT THE SOUTHWEST CORNER OF DONATION LAND CLAIM NO. 56, SECTION II, TOWNSHIP 37 SOUTH, RANGE 2 WEST OF THE WILLAMETTE MERIDIAN, JACKSON COUNTY, OREGON; THENCE SOUTH 23.82 FEET; THENCE WEST 681.76 FEET TO THE NORTHWEST CORNER OF HOMESTEAD PARK - UNIT NO. 1 (RECORDED SUBDIVISION); THENCE SOUTH 0° 02' 5" EAST 560.00 FEET ALONG THE WEST LINE OF SAID HOMESTEAD PARK - UNIT NO. 1 (RECORDED SUBDIVISION); THENCE NORTH 89° 57' 10" EAST 260.00 FEET TO A BRASS DISC SET IN CONCRETE FOR THE INITIAL POINT OF HOMESTEAD PARK - UNIT NO. 3; THENCE NORTH 89° 57' 10" EAST 280.57 FEET; THENCE SOUTH 0° 43' 00" WEST 169.01 FEET; THENCE SOUTH 20° 57' 00" WEST 104.88 FEET; THENCE SOUTH 42° 03' 10" WEST 53.91 FEET; THENCE SOUTH 58° 39' 00" WEST 130.78 FEET; THENCE SOUTH 42° 03' 00" WEST 80.91 FEET; THENCE SOUTH 21° 21' 10" WEST 71.35 FEET; THENCE SOUTH 45° 32' 30" WEST 55.30 FEET; THENCE SOUTH 2° 19' 00" WEST 109.77 FEET; THENCE SOUTH 15° 23' 40" WEST 43.02 FEET; THENCE SOUTH 8° 52' 50" EAST 70.61 FEET; THENCE SOUTH 33° 47' 00" WEST 103.24 FEET; THENCE SOUTH 0° 31' 10" WEST 62.83 FEET; THENCE NORTH 35° 08' 10" WEST 62.27 FEET; THENCE NORTH 54° 51' 50" EAST 310.00 FEET; THENCE SOUTH 35° 08' 10" EAST 35.00 FEET; THENCE NORTH 54° 51' 50" EAST 150.00 FEET; THENCE NORTH 33° 56' 10" EAST 97.06 FEET; THENCE NORTH 0° 02' 50" WEST 80.00 FEET TO THE INITIAL POINT.

Subscribed and sworn to before me this 23 day of Feb 1965

Mrs. Mills NOTARY PUBLIC FOR OREGON

My Commission Expires the 15 day of Nov 1966



J. A. Hoffbuhr Surveyor