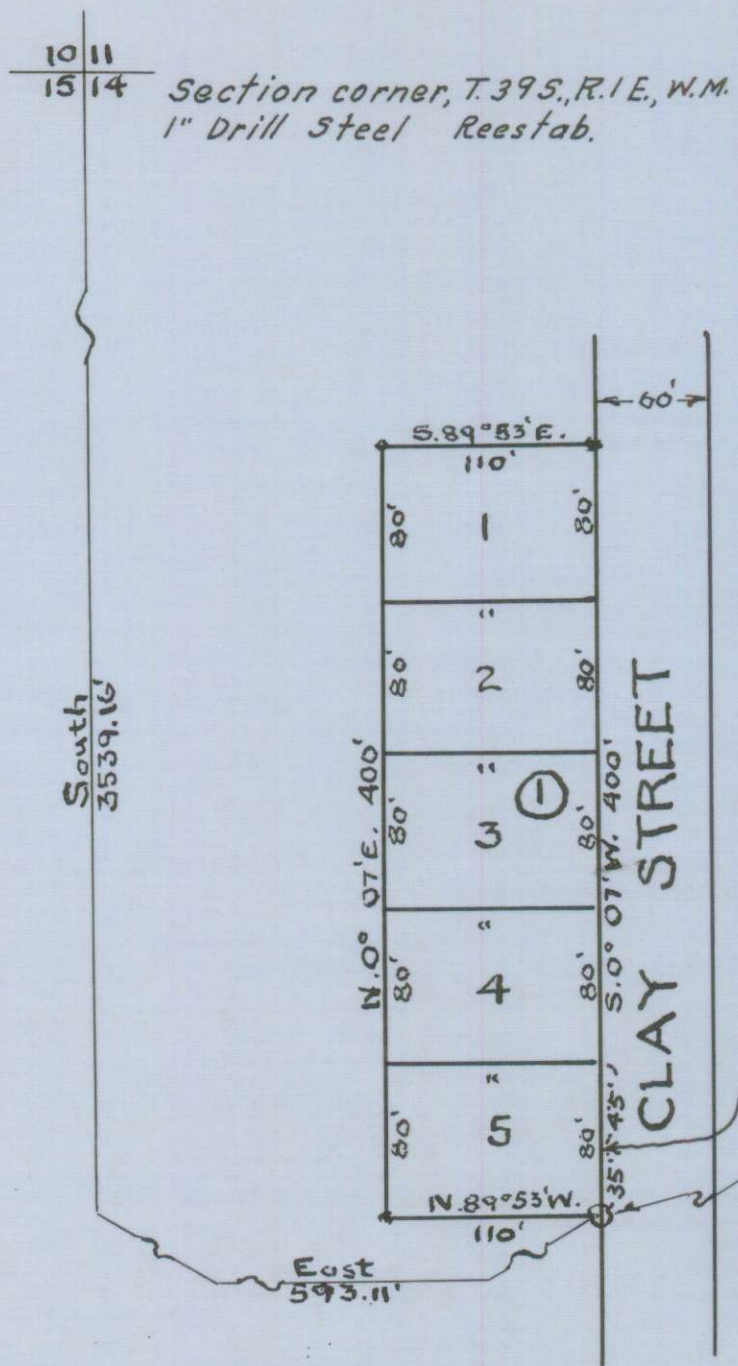


# THE HAINES SUBDIVISION

IN THE CITY OF ASHLAND, JACKSON COUNTY, OREGON  
SECTION 14, T.39 S.R.1 E.W.M.

SCALE 1"=100'



Note: 2" Galv. Iron Pipe set at initial point.  
 1" Iron Pipes set at block corners.  
 3/4" Iron Pipes set at lot corners.  
 Bearings by Solar observation.

Point of entry, Talent Irrigation District ditch.  
 POINT OF BEGINNING WHICH IS THE EASTERLY N.E. CORNER OF THE GUETZLAFF SUBDIVISION



I hereby certify that this tracing is an exact copy of the original plat filed with the County Clerk.  
L. E. Ager  
 Surveyor

## DEDICATION

KNOW ALL MEN BY THESE PRESENTS that I, Mildred L. Haines am the owner in fee simple of the lands hereon described and that I have subdivided the same into lots, blocks, and streets as shown hereon, and the number and size of the lots and the length of all lines are plainly set forth, and that this plat is a correct representation of the said subdivision and I do hereby dedicate to the public for public use all streets hereon as shown and I do hereby designate said subdivision as THE HAINES SUBDIVISION.

IN WITNESS WHEREOF I have set my hand and seal this 24<sup>th</sup> day of November 1964.  
Mildred L. Haines

STATE OF OREGON }  
 County of Jackson } ss

November 24, A.D. 1964

Personally appeared before me the above named Mildred L. Haines and acknowledged the foregoing instrument to be her voluntary act and deed. Before me  
Horace Myers  
 Notary Public for Oregon

My commission expires the 16<sup>th</sup> day of September 1967.

## SURVEYOR'S CERTIFICATE

STATE OF OREGON }  
 County of Jackson } ss

I, L.E. Ager, a duly registered Surveyor of the State of Oregon, being first duly sworn, do hereby certify that I have correctly surveyed and marked with the proper monuments as provided by law the tract of land hereon shown and the said plat is a correct representation of the same, and the following is an accurate description of the boundary lines. Commencing at a 2 inch iron pipe at the Easterly Northeast corner of the Guetzlaff Subdivision, in the City of Ashland, Jackson County, Oregon, according to the official plat thereof now of record, which is the initial point of beginning; thence N.89°53'W. 110.0 feet; thence N. 0°07'E. 400.0 feet; thence S.89°53'E. 110.0 feet; thence S.0°07'W. 400.0 feet to the initial point of beginning.

Subscribed and sworn before me this 19th day of November, 1964.  
Horace Myers  
 Notary Public for Oregon

My commission expires the 16th day of September, 1967.  
 Filed for record this 17 day of December 1964 at 4:31 o'clock P.M. and recorded in Volume 9 of Plats at page 55 of Records of Jackson County.

Emily J. Jell  
 County Clerk

By \_\_\_\_\_  
 Deputy

Examined and approved by the Talent Irrigation District in regular session this 1<sup>st</sup> day of December 1964.  
W. H. Hogg Secretary  
Ernest R. Ross President

Examined and approved by the City of Ashland Planning Commission in regular session this 27 day of NOVEMBER 1964.  
Glenn S. Kinney Secretary  
Floyd C. Vogel President

Examined and approved for the City of Ashland this 27<sup>th</sup> day of November 1964.  
Allen A. Alving  
 City Engineer

Examined and approved this 17<sup>th</sup> day of December 1964.  
Thad W. Hatten  
 County Assessor

All taxes paid in full to date this 17 day of December 1964.  
De Armond Leigh  
Paul Pettibill Under Sheriff  
 County Sheriff

For order of the County Court approving this plat see Volume \_\_\_\_\_, page \_\_\_\_\_, of County Commissioners Journal of Proceedings.  
Emily Jell  
 County Clerk

By \_\_\_\_\_  
 Deputy