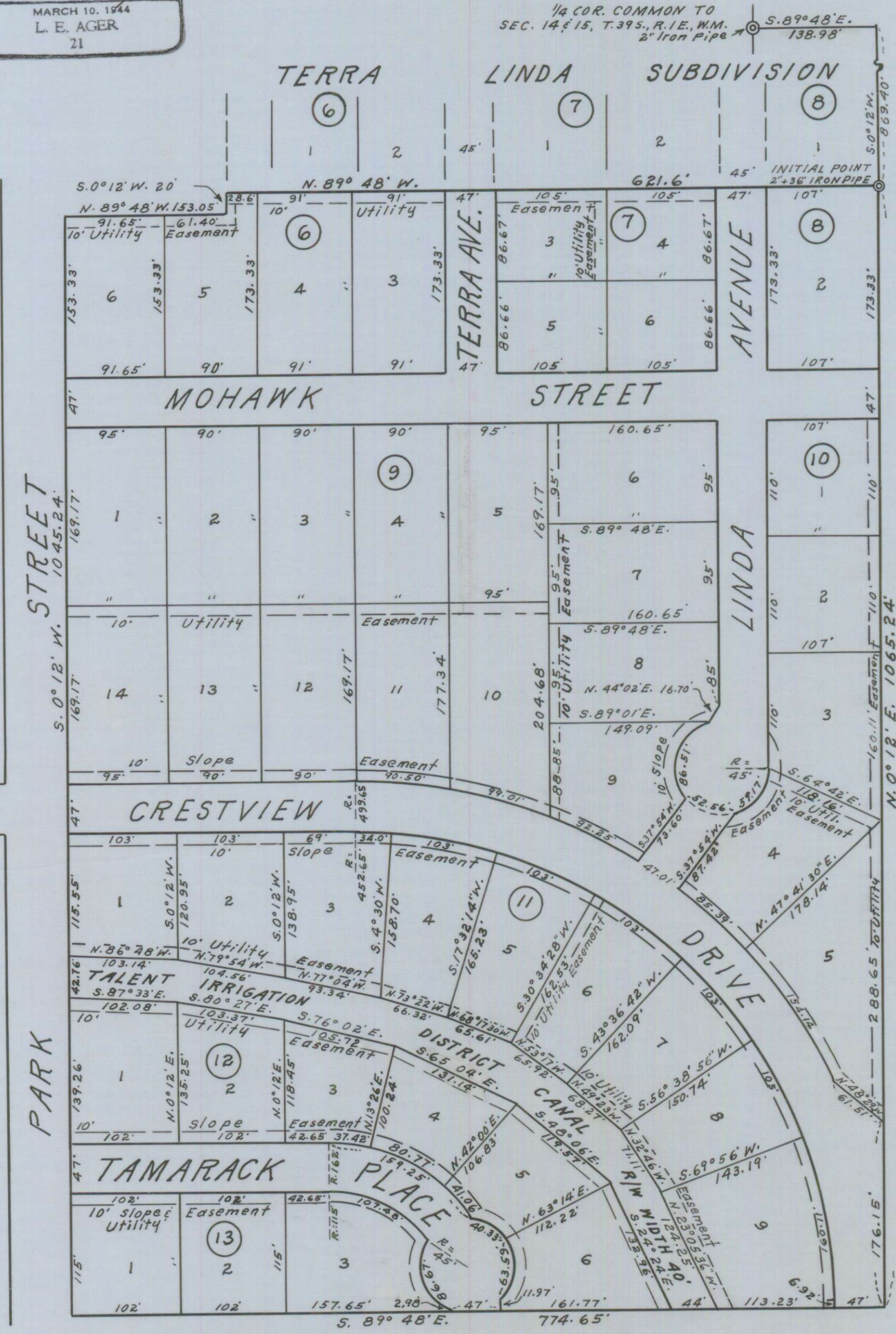


TERRA LINDA SUBDIVISION NO. 2

IN SECTIONS 14 & 15, T. 39 S., R. 1 E., W. M.
CITY OF ASHLAND, JACKSON COUNTY, OREGON.

SCALE: 1" = 100'

REGISTERED
OREGON
LAND SURVEYOR
L. E. Ager
MARCH 10, 1944
L. E. AGER
21



DEDICATION

KNOW ALL MEN BY THESE PRESENTS, that we, Karl W. Windbigler and Pearl N. Windbigler are the owners in fee simple of the lands hereon described and that we have subdivided the same into lots, blocks and streets as shown hereon, and the number and the size of the lots and the lengths of all lines are plainly set forth and that this plat is a correct representation of the said subdivision and we do hereby dedicate to the public for public use all streets shown hereon, and we do hereby designate said subdivision as: **TERRA LINDA SUBDIVISION No. 2.** IN WITNESS WHEREOF we have hereunto set our hands and seals this 27th day of May 1964

Karl W. Windbigler *Pearl N. Windbigler*

STATE OF OREGON }
County of Jackson }^{ss}

May 27th AD 1964
Personally appeared the above named, Karl W. Windbigler and Pearl N. Windbigler and acknowledged the foregoing instrument to be their voluntary act and deed, Before me,

Walter M. Binger
Notary Public for Oregon

My Commission expires the 25th day of December 1966

Examined and approved by the City of Ashland Planning Commission this 13th day of July 1964

Attest: *Nelda L. Kuning* Secretary *Floyd C. Vogel* President

Examined and approved for the City of Ashland this 13th day of July 1964

Allen A. Alsing
City Engineer

Examined and approved by the Talent Irrigation District in regular session this 4th day of August 1964

W. H. Hoffmann Secretary *Eric Rasmussen* President

Examined and approved this 3rd day of August 1964

Shad W. Hatten
County Assessor

SURVEYOR'S CERTIFICATE

STATE OF OREGON }
County of Jackson }^{ss}

I, L. E. Ager a duly registered Surveyor of the State of Oregon, being first duly sworn, do hereby certify that I have correctly surveyed and marked with the proper monuments as provided by law the tract of land hereon shown and the said plat is a correct representation of the same, and the following is an accurate description of the boundary lines: Beginning at the Southeast corner of Terra Linda Subdivision in Section 14, T. 39 S., R. 1 E., W. M., Jackson County, Oregon, according to the official plat thereof, now of record, at a point which bears S. 89° 48' E. 138.98 feet and South 0° 12' W. 869.40 feet from the West 1/4 Corner of said Section; thence N. 89° 48' W. 621.6 feet to the Southwest corner of said Subdivision; thence S. 0° 12' W. 20.0 feet; thence N. 89° 48' W. 153.05 feet to the East line of Park Street; thence S. 0° 12' W. along said street, 1045.24 feet to a point on the South line of Lot 28, Bellevue Tract in said Township and Range; thence S. 89° 48' E. along the South line of Lots 28 and 20 of said tract 774.65 feet; thence N. 0° 12' E. 1065.24 feet to the point of beginning.

L. E. Ager
Surveyor

Subscribed and sworn to before me this 18th day of May 1964

Lorraine A. Osborn
Notary Public for Oregon

My Commission expires the 22nd day of December 1967

All taxes paid in full to date this the 3 day of Aug 1964

Deborah L. High
County Sheriff

For Order of the County Court approving this plat see Volume page of County Commissioner's Journal of Proceedings.

By: Deputy County Clerk

604853
Filed for record this the 7th day of August 1964 at 12:15 o'clock PM and recorded in Volume 9 of Plats at page 47 of Records of Jackson County.

By: Deputy County Clerk

I hereby certify that this tracing is an exact copy of the original plat filed with the County Clerk.

L. E. Ager
Surveyor