

# BROOKHURST SUBDIVISION - UNIT NO. 4

LOCATED IN SECTION 18, T. 37S, R. 1W, W.M.  
MEDFORD, OREGON

## DEDICATION

KNOW ALL MEN BY THESE PRESENTS THAT WE, HOMESITES, INC., AN OREGON CORPORATION, ARE THE OWNERS IN FEE SIMPLE OF THE LANDS HEREON DESCRIBED, AND THAT WE HAVE SUB-DIVIDED THE SAME INTO LOTS, BLOCKS AND STREETS AS SHOWN HEREON, AND THE NUMBER AND THE SIZE OF THE LOTS AND LENGTH OF ALL LINES ARE PLAINLY SET FORTH, AND THAT THIS PLAT IS A CORRECT REPRESENTATION OF SAID SUBDIVISION, AND WE DO HEREBY DEDICATE TO THE PUBLIC FOR PUBLIC USE, ALL STREETS AND PUBLIC UTILITY EASEMENTS, SHOWN HEREON, AND WE DO HEREBY DESIGNATE SAID SUBDIVISION AS, **BROOKHURST SUBDIVISION - UNIT NO. 4**.

IN WITNESS WHEREOF WE HAVE SET OUR HANDS AND SEALS THIS 24<sup>th</sup> DAY OF June, 1964

Clifford E. Lewis HOMESITES, INC. SECRETARY  
Roy P. Wilkes PRESIDENT

STATE OF OREGON ) SS  
COUNTY OF JACKSON )  
June 24 A.D. 1964

PERSONALLY APPEARED THE ABOVE NAMED ROY P. WILKES, PRESIDENT AND CLIFFORD E. LEWIS, SECRETARY OF HOMESITES, INC., AN OREGON CORPORATION, AND ACKNOWLEDGED THE FOREGOING INSTRUMENT TO BE THEIR VOLUNTARY ACT AND DEED. **BEFORE ME:**

Clayton W. Lewis NOTARY PUBLIC FOR OREGON  
MY COMMISSION EXPIRES THE 15<sup>th</sup> DAY OF September 1965

EXAMINED AND APPROVED BY THE CITY OF MEDFORD PLANNING COMMISSION IN REGULAR SESSION, THIS THE 9<sup>th</sup> DAY OF JULY 1964  
ATTEST: Ned M. Langford SECRETARY  
E.B. DeLong PRESIDENT

EXAMINED AND APPROVED THIS 14<sup>th</sup> DAY OF July 1964  
Vern Shupe CITY ENGINEER

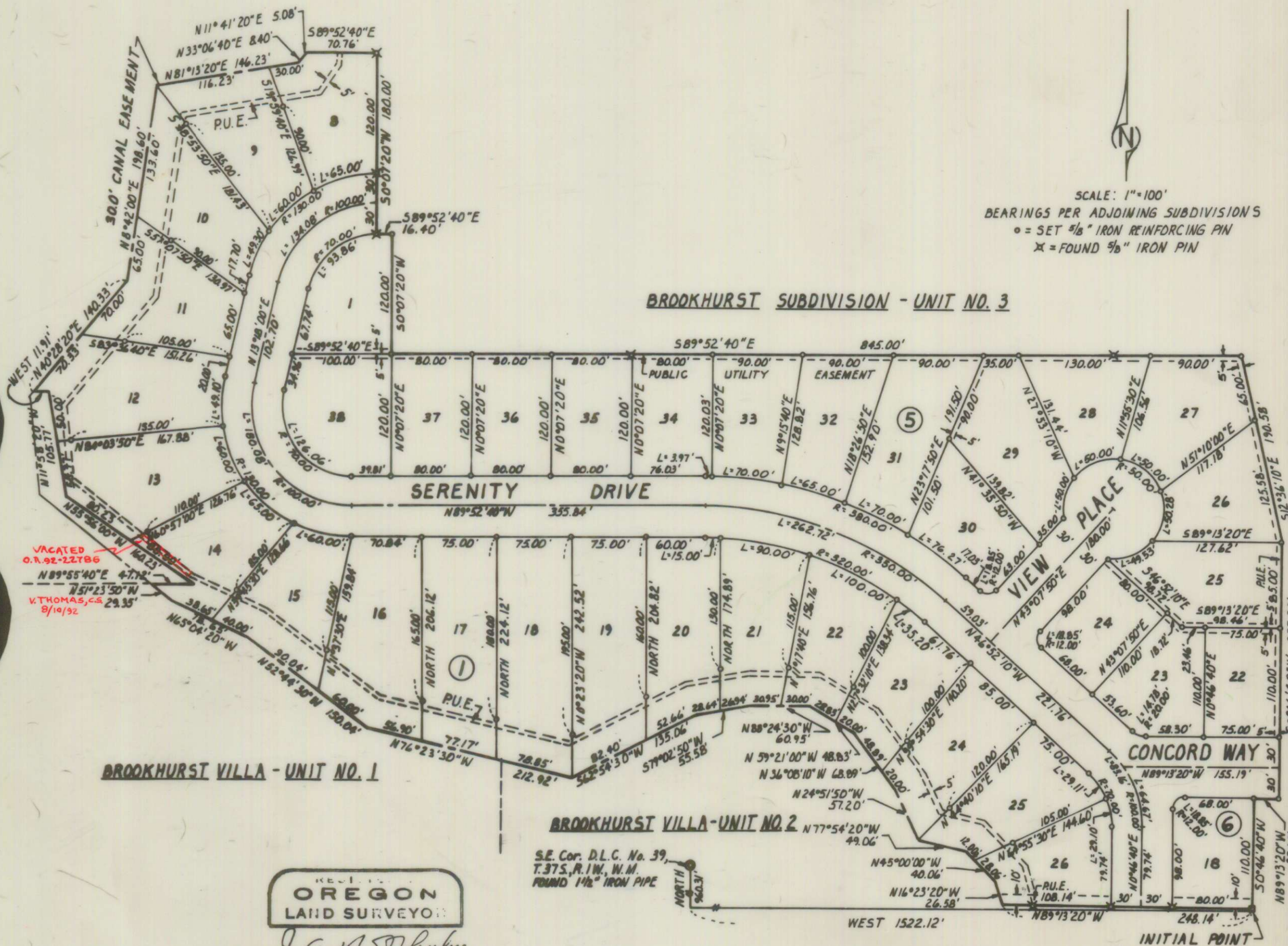
EXAMINED AND APPROVED THIS 23 DAY OF July 1964  
Ishad W. Hatten COUNTY ASSESSOR

ALL TAXES PAID IN FULL TO DATE THIS THE 24 DAY OF July 1964  
Dr. Leonard F. High COUNTY SHERIFF

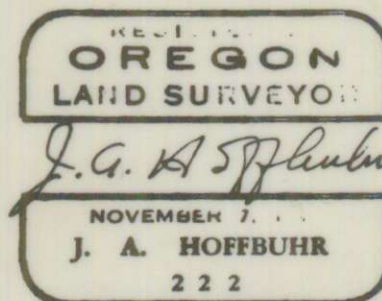
FOR ORDER OF THE COUNTY COURT APPROVING THIS PLAT, SEE VOLUME \_\_\_\_\_, PAGE \_\_\_\_\_ OF COUNTY COMMISSIONERS JOURNAL OF PROCEEDINGS.  
Emm Addel COUNTY CLERK

604623  
FILED FOR RECORD THIS THE 5<sup>th</sup> DAY OF August, 1964, AT 11:11 O'CLOCK A. M. AND RECORDED IN VOLUME 9 OF PLATS AT PAGE 46 OF RECORDS OF JACKSON COUNTY, OREGON.

Emm Addel COUNTY RECORDER



SCALE: 1"=100'  
BEARINGS PER ADJOINING SUBDIVISIONS  
o = SET 3/8" IRON REINFORCING PIN  
x = FOUND 3/8" IRON PIN



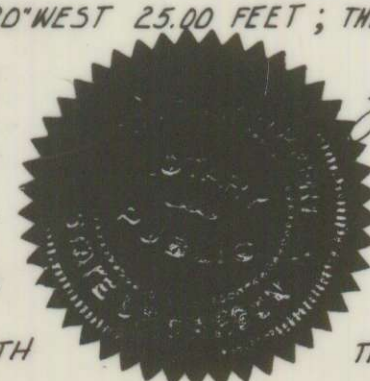
## SURVEYORS CERTIFICATE

STATE OF OREGON ) SS  
COUNTY OF JACKSON )

I J.A. HOFFBUHR A DULY REGISTERED SURVEYOR OF THE STATE OF OREGON, BEING FIRST DULY SWORN, DO HEREBY CERTIFY THAT I HAVE CORRECTLY SURVEYED AND MARKED WITH PROPER MONUMENTS AS PROVIDED BY LAW THE TRACT OF LAND HEREON SHOWN AND SAID PLAT IS A CORRECT REPRESENTATION OF THE SAME, AND THE FOLLOWING IS AN ACCURATE DESCRIPTION OF THE BOUNDARY LINES: COMMENCING AT A BRASS CAP MONUMENT SET IN CONCRETE AT THE NORTHEAST CORNER OF LOT 1, BLOCK 3, BROOKHURST VILLA - UNIT NO. 2 (RECORDED SUBDIVISION) FOR THE INITIAL POINT, FROM WHICH THE SOUTHEAST CORNER OF DONATION LAND CLAIM No. 39, TOWNSHIP 37 SOUTH, RANGE 1 WEST, WILLAMETTE MERIDIAN, JACKSON COUNTY, OREGON, BEARS WEST 1522.12 FEET AND NORTH 960.31 FEET; THENCE NORTH 89°13'20" WEST 248.14 FEET TO INTERSECT THE CENTERLINE OF THE ROGUE RIVER VALLEY IRRIGATION DISTRICT CANAL; THENCE ALONG THE CENTER OF SAID CANAL THE FOLLOWING COURSES, NORTH 16°23'20" WEST 26.58 FEET; NORTH 45°00'00" WEST 40.06 FEET; NORTH 77°54'20" WEST 49.06 FEET; NORTH 24°51'50" WEST 57.20 FEET; NORTH 36°08'10" WEST 68.89 FEET; NORTH 59°21'00" WEST 48.83 FEET; NORTH 88°24'30" WEST 60.95 FEET; SOUTH 79°02'50" WEST 55.58 FEET; SOUTH 62°54'30" WEST 135.06 FEET; NORTH 76°23'30" WEST 212.92 FEET; NORTH 52°44'30" WEST 150.04 FEET; NORTH 45°04'20" WEST 78.65 FEET AND NORTH 51°23'50" WEST 29.35 FEET TO THE MOST NORTH NORTHEAST CORNER OF BROOKHURST VILLA - UNIT NO. 1 (RECORDED SUBDIVISION); THENCE NORTH 89°55'40" EAST 47.12 FEET; THENCE NORTH 55°56'00" WEST 160.23 FEET; THENCE NORTH 11°58'20" WEST 105.77 FEET; THENCE WEST 11.91 FEET TO INTERSECT THE CENTERLINE OF THE ROGUE RIVER VALLEY IRRIGATION DISTRICT CANAL; THENCE ALONG THE CENTER OF SAID CANAL THE FOLLOWING COURSES, NORTH 40°28'20" EAST 140.33 FEET; NORTH 8°42'00" EAST 198.60 FEET; NORTH 81°13'20" EAST 146.23 FEET; NORTH 33°06'40" EAST 8.40 FEET AND NORTH 11°41'20" EAST 5.08 FEET TO THE MOST SOUTH SOUTHWEST CORNER OF LOT 6, BLOCK 1 OF BROOKHURST SUBDIVISION - UNIT NO. 3 (RECORDED SUBDIVISION); THENCE ALONG THE BOUNDARY OF SAID SUBDIVISION AS FOLLOWS: SOUTH 89°52'40" EAST 70.76 FEET; SOUTH 0°07'20" WEST 180.00 FEET; SOUTH 89°52'40" EAST 16.40 FEET; SOUTH 0°07'20" WEST 120.00 FEET AND SOUTH 89°52'40" EAST 845.00 FEET; THENCE SOUTH 12°36'10" EAST 190.58 FEET; THENCE SOUTH 0°46'40" WEST 255.00 FEET; THENCE NORTH 89°13'20" WEST 25.00 FEET; THENCE SOUTH 0°46'40" WEST 110.00 FEET TO THE INITIAL POINT.

SUBSCRIBED AND SWORN TO BEFORE ME THIS 20<sup>th</sup> DAY OF June 1964  
Mary D. Schuett NOTARY PUBLIC FOR OREGON  
MY COMMISSION EXPIRES THE 9<sup>th</sup> DAY OF JANUARY 1968

I HEREBY CERTIFY THAT THIS TRACING IS AN EXACT COPY OF THE ORIGINAL PLAT FILED WITH



J. A. Hoffbuhr SURVEYOR  
J. A. Hoffbuhr SURVEYOR  
THE COUNTY CLERK  
J. A. Hoffbuhr SURVEYOR