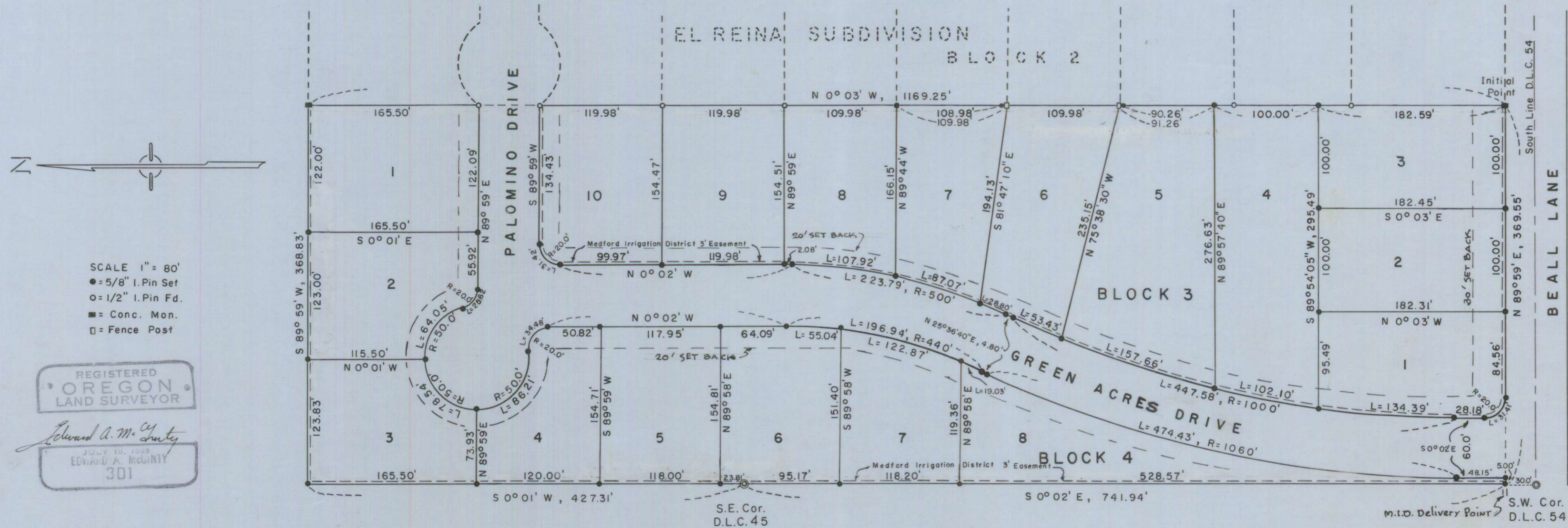


EL REINA SUBDIVISION EXTENSION NO. 1

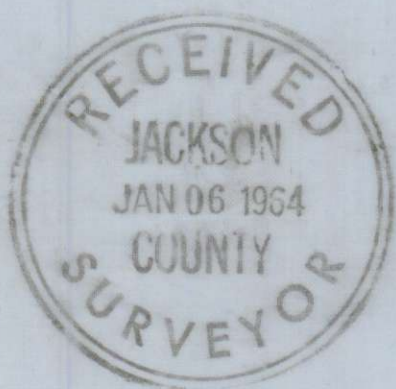
LOCATED IN D.L.C. 54, SECTION 9

T. 37 S., R. 2 W., W.M.



SCALE 1" = 80'
 ● = 5/8" I. Pin Set
 ○ = 1/2" I. Pin Fd.
 ■ = Conc. Mon.
 □ = Fence Post

REGISTERED
 OREGON
 LAND SURVEYOR
 Edward A. Mc Ginty
 JULY 10, 1933
 EDWARD A. MCGINTY
 301



DEDICATION

KNOWN ALL MEN BY THESE PRESENTS that we Robert Russell and Virginia Russell are owners in fee simple of the lands hereon described and that we have subdivided the same into lots, blocks, and streets as shown hereon and the number and size of lots and the lengths of all lines are plainly set forth, and that this plat is a correct representation of the said subdivision, and we do hereby dedicate to the public for the public use all streets as shown hereon, and we do hereby designate said subdivision as EL REINA SUBDIVISION, EXTENSION NO. 1.

IN WITNESS WHEREOF we have set our hands and seals this 12 day of NOVEMBER, 1963.
 STATE OF OREGON) Robert Russell
 COUNTY OF JACKSON) Virginia Russell

Nov. 12 A.D. 1963
 Personally appeared the above-named, Robert Russell and Virginia Russell and acknowledged the foregoing instrument to be their voluntary act and deed. Before me
Shen A. Davies
 Notary Public for Oregon

My Commission expires the 18th day of June, 1967
 Examined and approved by the Jackson County Planning Commission in regular session this 26th day of DECEMBER, 1963.
 Attest: Harold T. Rathman Secretary
Joseph President

Examined and approved by the Medford Irrigation District in regular session this 3 day of December, 1963.
 Attest: J. G. Ashburn Secretary
Albert Huceners President

Examined and approved this 12th day of December, 1963
Thad W. Hatten
 County Assessor

All taxes paid in full to date this 12th day of Dec, 1963
De Arnold High
 County Sheriff

Examined and recommended for the approval of the County Court
Mark E. Boyden
 County Surveyor

SURVEYOR'S CERTIFICATE

STATE OF OREGON) SS.
 COUNTY OF JACKSON) SS.
 I, Edward A. Mc Ginty, a duly registered surveyor of the State of Oregon, being first duly sworn, do hereby certify that I have correctly surveyed and marked with proper monuments as provided by law the tract of land hereon shown and the said plat is a correct representation of the same, and the following is an accurate description of the boundary lines; Commencing AT THE SOUTHWEST CORNER OF D.L.C. 54, T.37S., R.2W., W.M., JACKSON COUNTY, OREGON; THENCE N. 0° 02' W., 30 FEET; THENCE N. 89° 59' E., 369.55 FEET TO THE INITIAL POINT BEING AT THE SOUTHWEST CORNER OF THE EL REINA SUBDIVISION; THENCE N. 0° 03' W., 1169.25 FEET TO THE NORTHWEST CORNER OF SAID SUBDIVISION; THENCE S. 89° 59' W., 368.83 FEET TO THE WEST LINE OF SAID D.L.C. 54; THENCE S. 0° 01' W., 427.31 FEET TO THE SOUTHWEST CORNER OF D.L.C. 45; THENCE S. 0° 02' E., 741.94 FEET; THENCE N. 89° 59' E., 369.55 FEET TO THE INITIAL POINT.

Subscribed and sworn before me this 4 day of October, 1963
Edward A. Mc Ginty
 Surveyor
 My commission expires the 1st day of August, 1965
Thelma E. Mc Ginty
 Notary Public for Oregon
 MY COMMISSION EXPIRES AUGUST 1, 1965

For order of the County Court approving this plat see Volume _____, Page _____, of County Commissioner's Journal of Proceedings
Erin Vodel
 County Clerk
 Filed for record this 2nd day of January, 1964, at 10:51 o'clock A.M. and recorded in 9 Volume of Plats at page 36 of Records of Jackson County, Oregon
 I hereby certify this tracing is an exact copy of the original plat filed with the County Clerk.
Edward A. Mc Ginty
 Surveyor