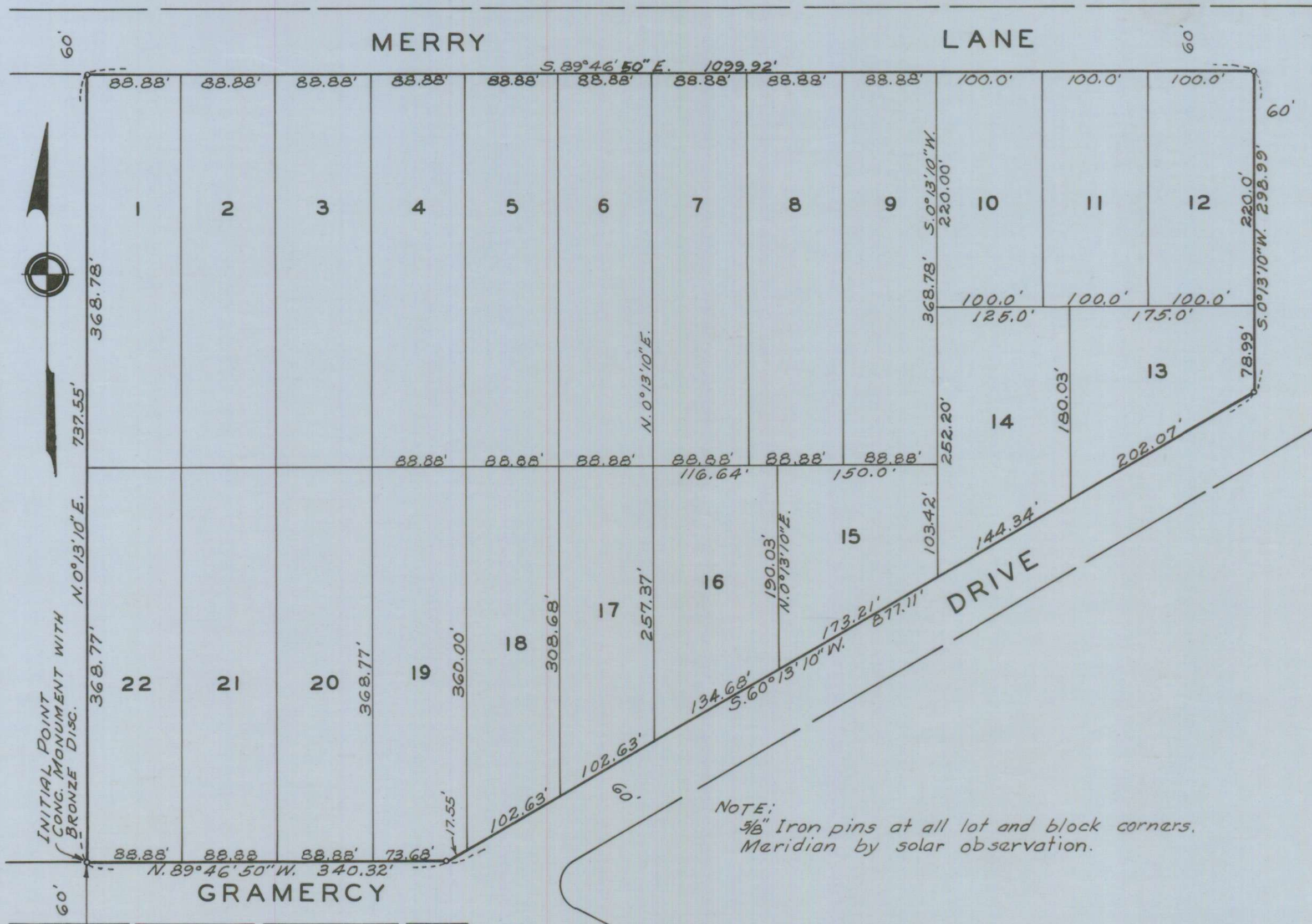


PRAIRIE VIEW SUBDIVISION
RESUBDIVISION OF LOTS 2,3,4,5,6,7&8, BLOCK 4
AGATE SUBDIVISION EXTENSION NO. 1
LOCATED IN SECTION 20, T.36S., R.1W., W.M.

SCALE: 1"=100'



NOTE:
3/8" Iron pins at all lot and block corners.
Meridian by solar observation.

DEDICATION

KNOW ALL MEN BY THESE PRESENTS, That we Melvin F. Hoover, Rosalind O. Hoover, James A. Welch Jr. and Virginia M. Welch, are the owners in fee simple of the lands hereon described, and that we have resubdivided Lots 2, 3, 4, 5, 6, 7 and 8, Block 4, Agate Subdivision Extension No. 1 shown hereon, and the number and size of the lots and lengths of all lines are plainly set forth, and that this plat is a correct representation of the said subdivision, and we do hereby designate said subdivision as, PRAIRIE VIEW SUBDIVISION.

IN WITNESS WHEREOF, we have hereunto set our hands and seals this 13 day of Sept., 1963.

Melvin F. Hoover
Rosalind O. Hoover

James A. Welch Jr.
Virginia M. Welch

STATE OF OREGON } ss.
County of Jackson }

9-13 A.D. 1963.

Personally appeared the above named Melvin F. Hoover, Rosalind O. Hoover, James A. Welch Jr. and Virginia M. Welch, and acknowledged the foregoing instrument to be their voluntary act and deed: Before me.

Emily J. Sutherland
Notary Public for Oregon

My commission expires the 16 day of JAN., 1965

Examined and approved by the Jackson County Planning Commission in regular session on this 5th day of NOVEMBER, 1963.

Attest:

Harold J. Latham
Secretary

Cooney
President

N. 89° 46' 50" W. 1118.09' 20 1/4 sec. corner
29

SURVEYOR'S CERTIFICATE

STATE OF OREGON } ss.
County of Jackson }

I, Leland P. Lovejoy, a duly registered surveyor of the State of Oregon, being first duly sworn, do hereby certify that I have correctly surveyed and marked with proper monuments as provided by law the tract of land hereon shown and the said plat is a correct representation of the same and the following is an accurate description of the boundary lines: Commencing at the quarter corner common to Sections 20 and 29, Township 36 South, Range 1 West, Willamette Meridian, Jackson County, Oregon; thence N. 89° 46' 50" W., 1118.09 feet along the south line of Agate Subdivision Extension No. 1; thence N. 0° 13' 10" E., 566.95 feet to the southeast corner of Lot 9, Block 4, said Agate Subdivision Extension No. 1, and the Initial Point, designated by a concrete monument with bronze disc; thence N. 0° 13' 10" E., 737.55 feet along the east lines of Lots 1, 9 and 12, Block 4, said Agate Subdivision Extension No. 1 to the northeast corner of said Lot 1, Block 4, said Agate Subdivision Extension No. 1; thence S. 89° 46' 50" E., 1099.92 feet along the north line of said Block 4, said subdivision; thence S. 0° 13' 10" W., 298.99 feet along east line of said Block 4, said subdivision; thence S. 60° 13' 10" W., 877.11 feet along the southeasterly line of said Block 4, said subdivision; thence N. 89° 46' 50" W., 340.32 feet along the south line of said Block 4, said subdivision to the Initial Point.

Leland P. Lovejoy
Surveyor

Subscribed and sworn before me this 12th day of Sept., 1963.

Notary Public for Oregon

My commission expires the 24th day of AUG., 1964.

Examined and approved by the Rogue River Valley Irrigation District in regular session on this 8 day of October, 1963.

Attest:

Donald W. Supton
Secretary

Otto Bohner
President

Examined and approved this 10th day of October, 1963.

Shad W. Hatten
County Assessor

All taxes paid in full to date this 10th day of Oct., 1963.

St. James
County Sheriff

Examined and recommended for approval of the County Court.

Mark E. Ouellet
County Surveyor

For order of the County Court approving this plat see Volume, Page, of County Commissioner's Journal of Proceedings.

Emmy Adell
County Clerk

583328
Filed for record this 8th day of November, 1963, at 2:14 o'clock P.M. and recorded in 7th Volume of plats at Page 35 of records of Jackson County, Oregon.

Emmy Adell
County Recorder

I hereby certify that this tracing is an exact copy of the original plat filed with the County Clerk.

Leland P. Lovejoy
Surveyor

