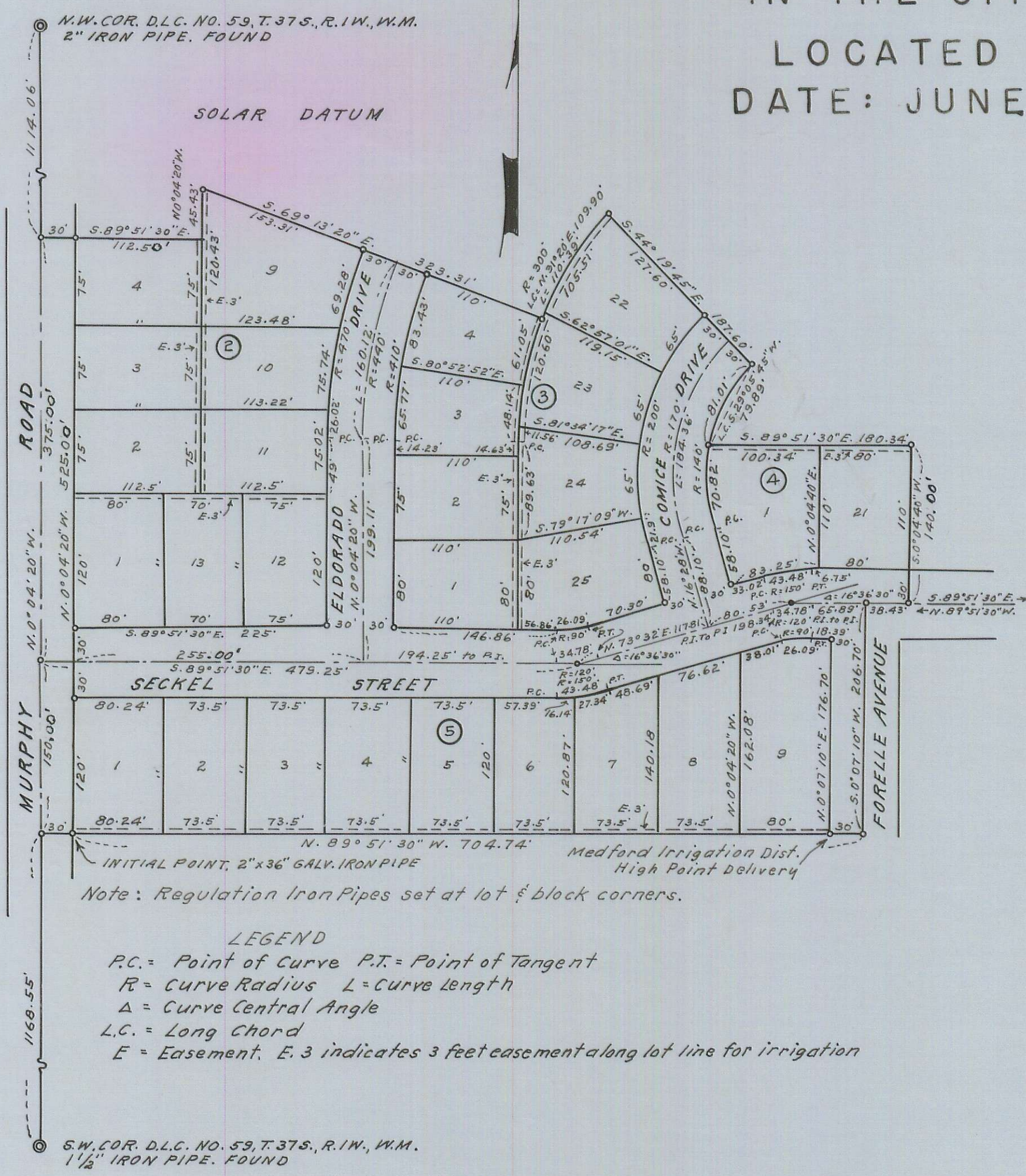


SISKIYOU VILLAGE UNIT NO. 2

IN THE CITY OF MEDFORD, JACKSON COUNTY, OREGON.
 LOCATED IN D.L.C. NO. 59, T. 37 S., R. 1 W., W.M., OREGON.
 DATE: JUNE 24, 1963 SCALE: 1" = 100'



DEDICATION

KNOW ALL MEN BY THESE PRESENTS that we, William H. Leever, Margaret Ann Leever, Donald B. Whalin and Lois H. Whalin are the owners in fee simple of the lands hereon described and that we have subdivided the same into lots, blocks and streets as shown hereon, and the number and size of the lots and the length of all lines are plainly set forth, and that this plat is a correct representation of the said subdivision and we do hereby dedicate to the public for public use all streets and easements as shown hereon and we do hereby designate said subdivision as SISKIYOU VILLAGE UNIT NO. 2.

IN WITNESS WHEREOF we have set our hands and seals this 25th day of June 1963

Donald B. Whalin William H. Leever
Lois H. Whalin Margaret Ann Leever

STATE OF OREGON }
 County of Jackson }
 JUN 26 AD 1963
 Personally appeared the above named William H. Leever, Margaret Ann Leever, Donald B. Whalin and Lois H. Whalin and acknowledged the foregoing instrument to be their voluntary act and deed. Before me

A. K. MacFarland
 Notary Public for Oregon
 My Commission expires the 22 day of August 1964

SURVEYOR'S CERTIFICATE

STATE OF OREGON }
 County of Jackson }
 ss

I, L.E. Ager, a duly registered Surveyor of the State of Oregon, being first duly sworn, do hereby certify that I have correctly surveyed and marked with the proper monuments as provided by law the tract of land hereon shown and the said plat is a correct representation of the same, and the following is an accurate description of the boundary lines:

Commencing at a point on the West line of Donation Land Claim No. 59, T. 37 S., R. 1 W., W.M., Jackson County, Oregon, which point bears N. 0° 04' 20" W. 1168.55 feet from the Southwest corner of said Claim; thence S. 89° 51' 30" E. 30.0 feet to a two inch iron pipe, the initial point of beginning; thence N. 0° 04' 20" W. parallel with the West line of said Claim, 525.0 feet; thence S. 89° 51' 30" E. 112.5 feet; thence N. 0° 04' 20" W. 45.43 feet; thence S. 69° 13' 20" E. 323.31 feet; thence on the arc of a 300 feet radius curve to the right, (the long chord of which bears N. 31° 20' E. 109.90 feet), a distance of 110.39 feet; thence S. 44° 19' 45" E. 187.60 feet; thence along the arc of an invert curve to the right, (the long chord of which bears S. 29° 05' 45" W. 79.89 feet) a distance of 81.01 feet, said curve having a radius of 140.0 feet; thence S. 89° 51' 30" E. 180.34 feet; thence S. 0° 04' 40" W. 140.0 feet; thence N. 89° 51' 30" W. 38.43 feet; thence S. 0° 07' 10" W. 206.70 feet; thence N. 89° 51' 30" W. 704.74 feet to the initial point of beginning.

L. E. Ager
 Surveyor

Subscribed and sworn to before me this 25th day of June 1963

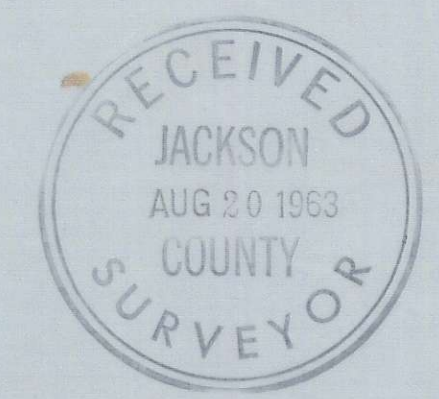
Lorraine A. Osborn
 Notary Public for Oregon
 My Commission expires the 5th day of January 1964

I hereby certify that this tracing is an exact copy of the original plat filed with the County Clerk

L. E. Ager
 Surveyor

575558
 Filed for record this the 9th day of August 1963 at 2:01 o'clock P.M. and recorded in Volume 9 of Plats at page 29 of Records of Jackson County

Emy Adell
 County Clerk



By _____ Deputy

Examined and approved by the City of Medford Planning Commission in regular session this 11th day of July 1963

Ned M. Langford Secretary Edward B. Hedberg President

Examined and approved for the City of Medford this 2nd day of August 1963

James Shupe
 City Engineer

Examined and approved by the Medford Irrigation District in regular session this 2nd day of July 1963

J. A. Hoffmann Secretary Albert Kusner President

Examined and approved this 1st day of August 1963

Shad W. Hatten
 County Assessor

All taxes paid in full to date this the 1 day of Aug. 1963

Clarence F. Smith
 County Sheriff

For Order of the County Court approving this plat see Volume _____ page _____ of the County Commissioner's Journal of Proceedings.

Emy Adell
 County Clerk

By _____ Deputy