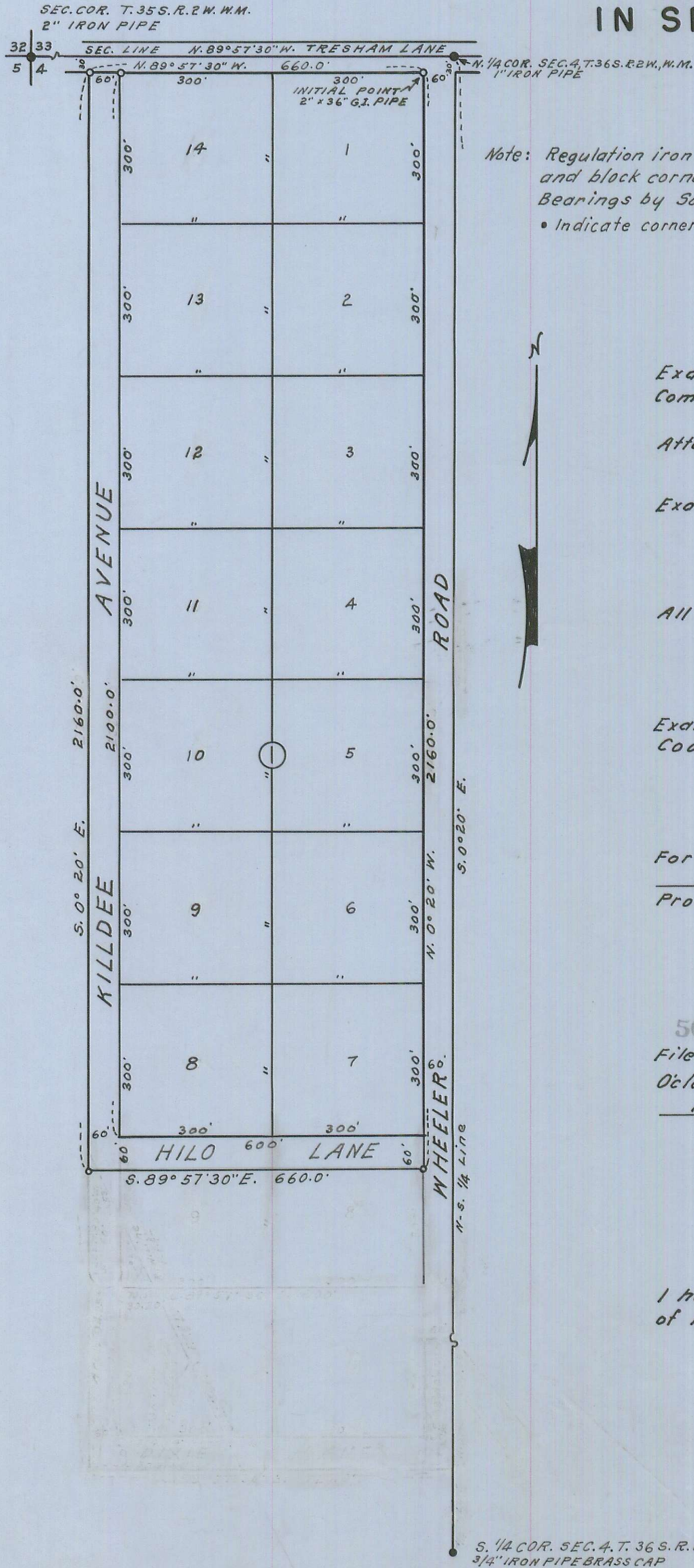


# SOUTH FORTY SUBDIVISION

IN SECTION 4, T. 36 S., R. 2 W., W.M., JACKSON COUNTY, OREGON

SCALE: 1" = 200'



Note: Regulation iron pipes set at all lot and block corners.  
Bearings by Solar Observation  
• Indicate corners found

Examined and approved by the Jackson County Planning Commission in regular session this 13<sup>th</sup> day of February 1963

Attest: General Latham Secretary      C. Sprague President

Examined and approved this 15<sup>th</sup> day of January 1963

Thad W. Hatten  
County Assessor

All taxes paid in full to date this the Jan day of 15 1963

De Litch  
County Sheriff

Examined and recommended for approval by the County Court this the 4<sup>th</sup> day of MARCH 1963

Mark E. Bearden  
County Surveyor

For Order of the County Court approving this plat see Volume      Page      of County Commissioner's Journal of Proceedings.

Emm Velle  
County Clerk

By      Deputy

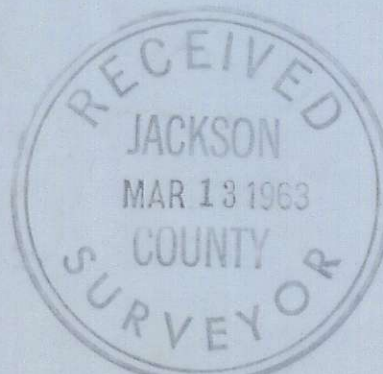
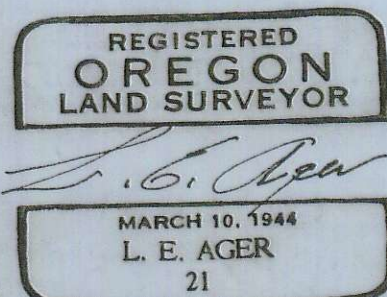
562501  
Filed for record this the 9<sup>th</sup> day of March 1963 at 2:21 O'clock P. M., and recorded in Volume 9 of Plats at Page 19 of Records of Jackson County.

Emm Velle  
County Clerk

By      Deputy

I hereby certify that this tracing is an exact copy of the original plat filed with the County Clerk

L. E. Ager  
Surveyor



## DEDICATION

KNOW ALL MEN BY THESE PRESENTS that we, Charles W. Duggan and Rosellen Duggan are the owners in fee simple of the lands hereon described, and that we have subdivided the same into lots, blocks and streets as shown hereon, and the number and size of the lots and the length of all lines are plainly set forth, and that this plat is a correct representation of the said subdivision and we do hereby dedicate to the public for public use all streets as shown hereon, and we do hereby designate said subdivision as SOUTH FORTY SUBDIVISION.

IN WITNESS WHEREOF we have set our hands and seals this 14<sup>th</sup> day of January 1963

Charles W. Duggan  
Rosellen Duggan

STATE OF OREGON } ss  
County of Jackson }

January 14, AD. 1963

Personally appeared the above named Charles W. Duggan and Rosellen Duggan and acknowledged the foregoing instrument to be their voluntary act and deed. Before me

Shelma C. McIntyre  
Notary Public for Oregon

My Commission expires the 1st day of August 1963

## SURVEYOR'S CERTIFICATE

STATE OF OREGON } ss  
County of Jackson }

I, L.E. Ager, a duly registered Surveyor of the State of Oregon, being first duly sworn, do hereby certify that I have correctly surveyed and marked with the proper monuments as provided by law the tract of land hereon shown and the said plat is a correct representation of the same and the following is an accurate description of the boundary lines: Beginning at a point which bears S. 0° 20' E, 30 feet and N. 89° 57' 30" W. 60.0 feet from the Quarter Section corner on the North line of Section 4, Township 36 South, Range 2 West of the Willamette Meridian, Jackson County, Oregon; thence N 89° 57' 30" W, parallel with the North line of said Section, 660.0 feet; thence S. 0° 20' E, 2160.0 feet; thence S. 89° 57' 30" E. 660.0 feet to the West line of the Wheeler Road; thence N. 0° 20' W, parallel with the East line of the West half of said Section, 2160.0 feet to the point of beginning.

L. E. Ager  
Surveyor

Subscribed and sworn to before me this 11<sup>th</sup> day of January 1963

Lorraine A. Osborn  
Notary Public for Oregon

My Commission expires the 5<sup>th</sup> day of January 1964