

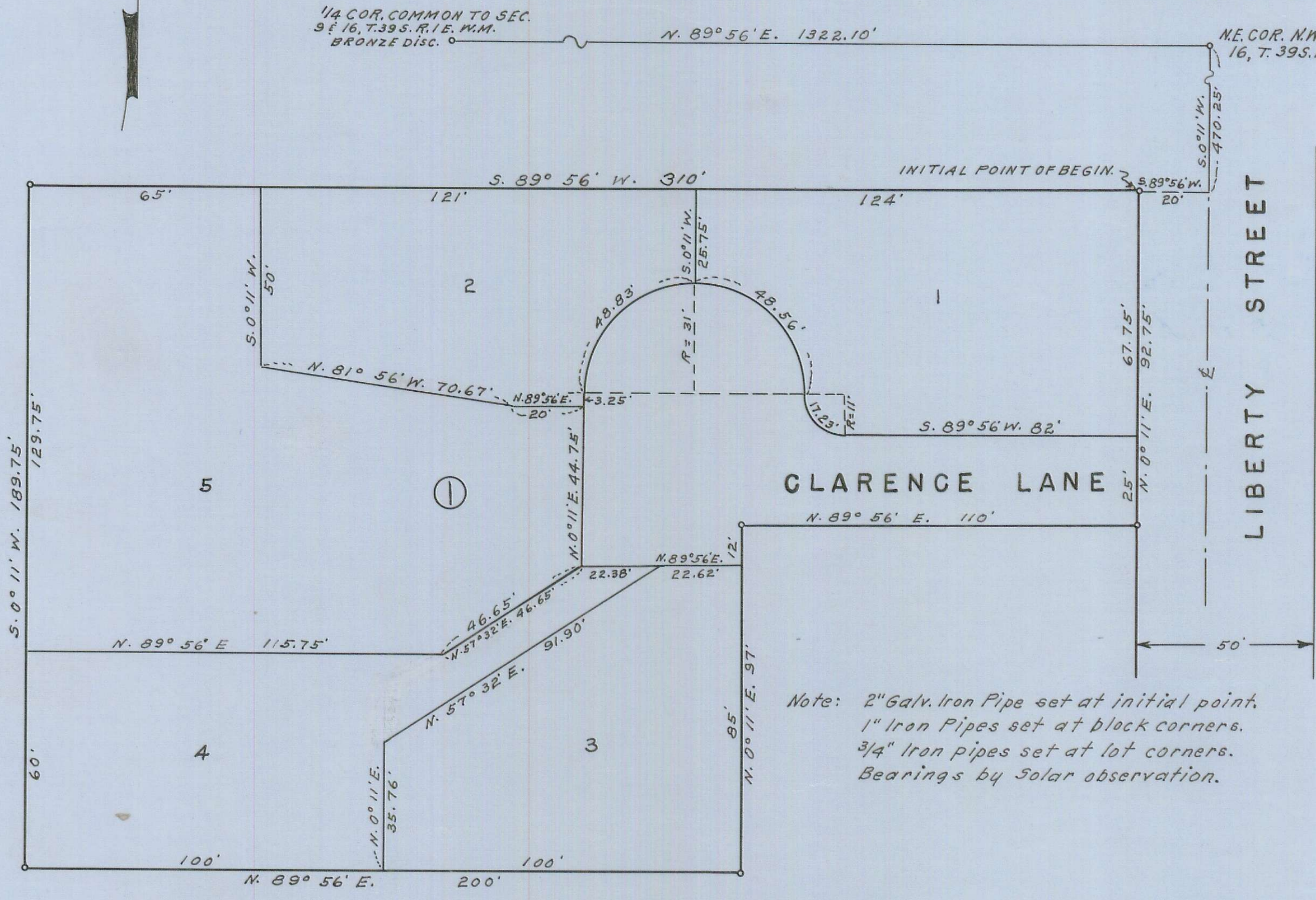
# THE PINES SUBDIVISION

IN THE CITY OF ASHLAND, JACKSON COUNTY, OREGON  
SECTION 16, T. 39 S. R. 1 E. W. M.

REGISTERED  
OREGON  
LAND SURVEYOR  
*L. E. Ager*  
MARCH 10, 1944  
L. E. AGER  
21

SCALE = 1" = 30'

DEDICATION



KNOW ALL MEN BY THESE PRESENTS that we, Horace Myers and Louise H. Myers are the owners in fee simple of the lands hereon described and that we have subdivided the same into lots, blocks and streets as shown hereon, and the number and size of the lots and the length of all lines are plainly set forth, and that this plat is a correct representation of the said subdivision, and we do hereby dedicate to the public for public use all streets hereon as shown and we do hereby designate said subdivision as THE PINES SUBDIVISION

IN WITNESS WHEREOF we have set our hands and seals this 20<sup>th</sup> day of February 1962.

*Horace Myers*  
*Louise H. Myers*

STATE OF OREGON } ss  
County of Jackson }

February 20, A.D. 1962

Personally appeared before me the above named Horace Myers and Louise H. Myers and acknowledged the foregoing instrument to be their voluntary act and deed, Before me

*Robert E. Van Fleet*  
Notary Public for Oregon

My Commission expires the 25<sup>th</sup> day of September 1963

### SURVEYOR'S CERTIFICATE

STATE OF OREGON } ss  
County of Jackson }

I, L.E. Ager, a duly registered Surveyor of the State of Oregon, being first duly sworn, do hereby certify that I have correctly surveyed and marked with the proper monuments as provided by law the tract of land hereon shown and the said plat is a correct representation of the same, and the following is an accurate description of the boundary lines. Commencing at a 3/4" iron pipe at the intersection of the center lines of Ashland Street and Liberty Street in the City of Ashland, Jackson County, Oregon, said iron pipe being the northeast corner of the N.W. 1/4 of the N.E. 1/4 of Section 16, Township 39 South, Range 1 East of the Willamette Meridian, Oregon, said iron pipe bears N. 89° 56' E. 1322.10' from the North 1/4 Corner of said Section; thence S. 0° 11' W. 470.25 feet; thence S. 89° 56' W. 20.0 feet to the initial point of beginning; thence S. 89° 56' W. 310.0 feet; thence S. 0° 11' W. 189.75 feet; thence N. 89° 56' E. 200.0 feet; thence N. 0° 11' E. 97.0 feet; thence N. 89° 56' E. 110.0 feet; thence N. 0° 11' E. 92.75 feet to the initial point of beginning.

*L. E. Ager*  
Surveyor

Subscribed and sworn to before me this 19<sup>th</sup> day of February, 1962

*Lorraine A. Osburn*  
Notary Public for Oregon

My Commission expires the 5<sup>th</sup> day of January 1964  
534602

Filed for record this the 16<sup>th</sup> day of March 1962 at 12:00 o'clock P.M. and recorded in Volume 9 of Plats at page 2 of Records of Jackson County

*M. W. Adelle*  
County Clerk

Examined and approved by the City of Ashland Planning Commission in regular session this 21<sup>st</sup> day of February 1962

*Hilda L. Kinney* Secretary  
*John Billings* President

Examined and approved for the City of Ashland this 21<sup>st</sup> day of February 1962

*E. C. Buegel*  
City Engineer

Examined and approved this 13<sup>th</sup> day of March 1962

*Shad W. Hatton*  
County Assessor

All taxes paid in full to date this the 15<sup>th</sup> day of March 1962

*Joseph Walsh*  
County Sheriff

For order of the County Court approving this plat see Volume 55, page 735, of County Commissioners Journal of Proceedings.

By \_\_\_\_\_ Deputy  
County Clerk

By \_\_\_\_\_ Deputy

I hereby certify that this tracing is an exact copy of the original plat filed with the County Clerk.

*L. E. Ager*  
Surveyor