

QUIET VILLAGE UNIT NO. 2
IN SECTIONS 4 & 5, T. 39 S. R. 1 E., W. M., OREGON
IN THE CITY OF ASHLAND, JACKSON COUNTY, OREGON.

SCALE 1" = 100'

DEDICATION

KNOW ALL MEN BY THESE PRESENTS that we, Phillip F. Bryant, Luella M. Bryant, Kenneth H. Jones and Laura Jones are the owners in fee simple of the lands hereon described and that we have subdivided the same into lots, blocks and streets as shown hereon, and the number and size of the lots and the length of all lines are plainly set forth, and that this plat is a correct representation of the said subdivision, and we do hereby dedicate to the public for public use all streets as shown hereon, and we do hereby designate said subdivision as QUIET VILLAGE UNIT No. 2.

IN WITNESS WHEREOF we have set our hands and seals this 9th day of January 1961

Kenneth H. Jones
Laura Jones

Phillip F. Bryant
Luella M. Bryant

STATE OF OREGON } ss
County of Jackson }
JANUARY 7 AD 1961

Personally appeared the above named, Phillip F. Bryant, Luella M. Bryant, Kenneth H. Jones and Laura Jones, and acknowledged the foregoing instrument to be their voluntary act and deed.

Before me _____
Notary Public for Oregon
My Commission expires the _____ day of _____ 1965

SURVEYOR'S CERTIFICATE

STATE OF OREGON } ss
County of Jackson }
I, L. E. Ager, a duly registered Surveyor of the State of Oregon, being first duly sworn, do hereby certify that I have correctly surveyed and marked with proper monuments as provided by law the tract of land hereon shown and the said plat is a correct representation of the same, and the following is an accurate description of the boundary lines.

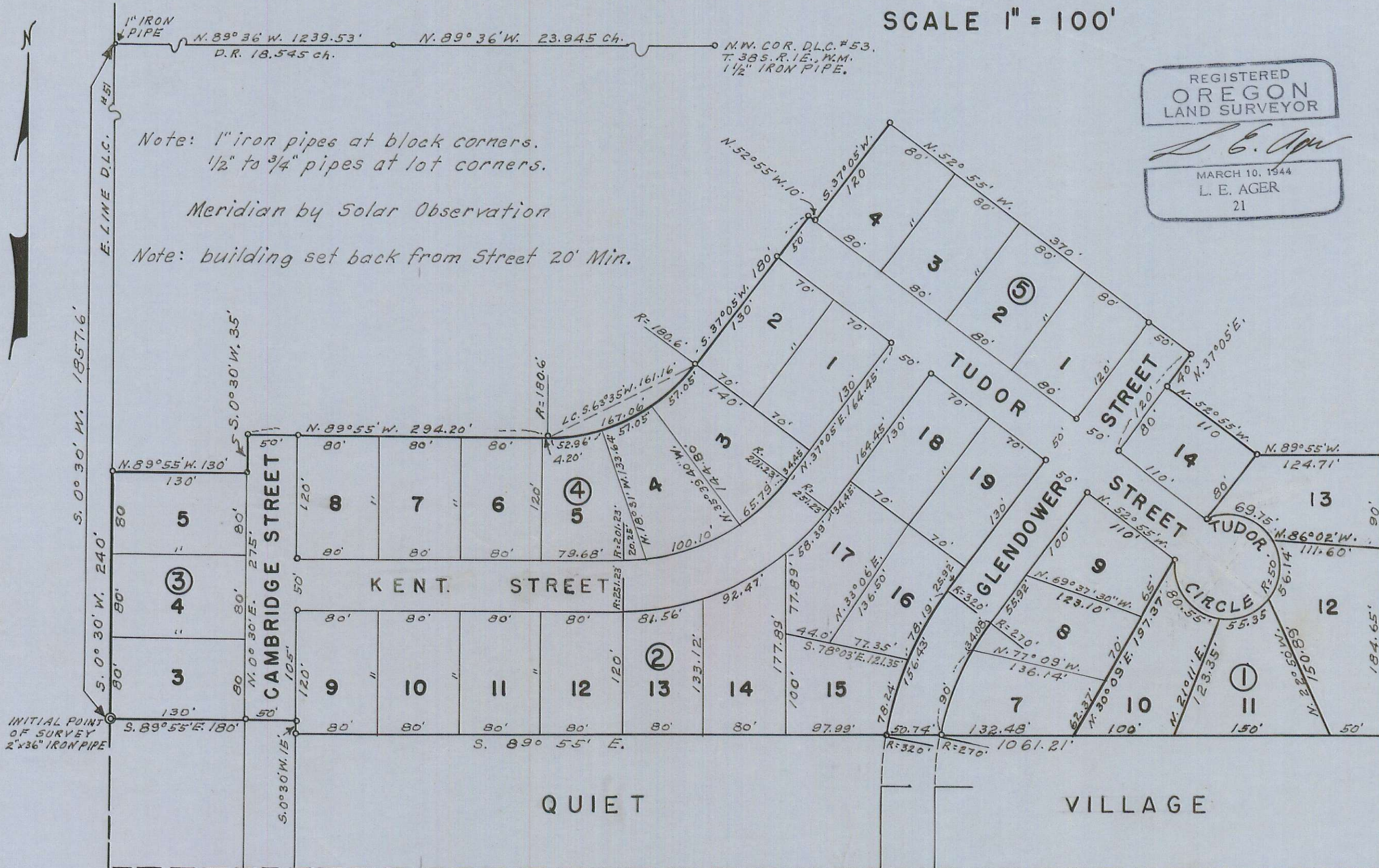
Commencing at a point which bears N. 89° 36' W. 23.945 chains from the Northwest corner of Donation Land Claim No. 53, in T. 38 S. R. 1 E., W. M., Jackson County, Oregon; thence N. 89° 36' W. 1239.53 feet to a 1 inch iron pipe on the East boundary of Donation Land Claim No. 51, said T. and R.; thence S. 0° 30' W. 1857.60 feet to the Northwest corner of Quiet Village, according to the official plat thereof now of record, the initial point of beginning; thence along the Northerly boundary thereof as follows: S. 89° 55' E. 180.0 feet; thence S. 0° 30' W. 15.0 feet; thence S. 89° 55' E. 1061.21 feet to the Northeast corner thereof; thence N. 0° 28' E. 274.65 feet; thence N. 89° 55' W. 124.71 feet; thence N. 52° 55' W. 110.0 feet; thence N. 37° 05' E. 40 feet; thence N. 52° 55' W. 370 feet; thence S. 37° 05' W. 120 feet; thence N. 52° 55' W. 10 feet; thence S. 37° 05' W. 180 feet; thence along the arc of a 180.6 feet radius curve right, the long chord of which bears S. 63° 35' W. 161.16 feet, a distance of 167.06 feet; thence N. 89° 55' W. 294.20 feet; thence S. 0° 30' W. 35 feet; thence N. 89° 55' W. 130 feet; thence S. 0° 30' W. 240 feet to the initial point of beginning.

L. E. Ager
Surveyor

Subscribed and sworn to before me this 25th day of July 1961

Lorraine A. Osborn
Notary Public for Oregon

My Commission expires the 5th day of January 1964



Examined and approved by the City of Ashland Planning Commission in regular session this _____ day of _____ 1961
Attest *Nelda L. Kinney* Secretary
John S. Billings President

For order of the County Court approving this plat see Volume 55 page 566 of County Commissioners Journal of proceedings.
MM Adde
County Clerk

Examined and approved for the City of Ashland this _____ day of _____ 1961
Elmer C. Riegel
City Engineer

330630
Filed for record this the 24th day of January 1962 at 1:33 o'clock P.M. and recorded in Volume 8 of Plats at page 60 of Records of Jackson County
MM Adde
County Clerk

Examined and approved this 10th day of Jan 1962
Deputy
Thad W. Hatten
County Assessor

By _____ Deputy
I hereby certify that this tracing is an exact copy of the original plat filed with the County Clerk
L. E. Ager
Surveyor

All taxes paid in full to date this 10th day of December 1962
Deputy
Joseph D. Walsh
County Sheriff