

# PARK TERRACE

IN D.L.C. No. 51, T. 37 S., R. 1 W. (W.M.)  
JACKSON COUNTY, OREGON.

### DEDICATION

KNOW ALL MEN BY THESE PRESENTS, That I, Helen M. Mace, an unmarried person, am the owner in fee simple of the lands hereon described, and that I have subdivided the same into lots, blocks and streets as shown hereon, and the number and size of the lots and lengths of all lines are plainly set forth, and that this plat is a correct representation of the said subdivision, and I do hereby dedicate to the public for public use all streets and alleys and easements for public utilities, shown hereon, and I do hereby designate said subdivision as PARK TERRACE.

IN WITNESS WHEREOF I have hereunto set my hand and seal this 29<sup>th</sup> day of April 1953

STATE OF OREGON )  
                          ) s.s.  
COUNTY OF JACKSON )

Witness Helen M. Mace SEAL

Personally came before me, a notary public in and for said County and State, the above named Helen M. Mace of said State and County, to me personally known to be the above named, and executed the above instrument, and who acknowledged to me that she did the same freely and voluntarily.

Dated this 29<sup>th</sup> day of April, 1953.

Thames M. Lewis  
NOTARY PUBLIC FOR OREGON

My commission expires the 6<sup>th</sup> day of November 1953

### SURVEYOR'S CERTIFICATE

STATE OF OREGON } s.s.  
COUNTY OF JACKSON )

I, L.N. Dow, a duly registered surveyor of the State of Oregon, being first duly sworn, do hereby certify that I have correctly surveyed and marked with proper monuments, as provided by law, (the initial point being a concrete monument with brass plate buried six inches below the surface) the tract of land hereon shown and the said plat is a correct representation of the same. The following is an accurate description of the boundary lines:

Beginning at a concrete monument with brass plate on the east line of Ellendale Drive, said point of beginning being East 30.00 feet from the southeast corner of Donation Land Claim No. 50, in Township 37 South, Range 1 West, Willamette Meridian, in Jackson County, Oregon; thence N 0° 02' W along the east line of Ellendale Drive 275.20 feet; thence East 519.00 feet; thence S 0° 02' E 615.05 feet; thence S 89° 56' W 519.00 feet to the east line of Ellendale Drive; thence N 0° 02' W 340.45 feet to the point of beginning. EXCEPTING THEREFROM; Beginning at a point that lies N 0° 02' W 91.55 thence N 89° 56' E 213.60 feet from the southeast corner of Donation Land Claim No. 50, in Township 37 South, Range 1 West, (W.M.) Jackson County, Oregon; thence N 89° 56' E 91.8 feet; thence S 0° 02' E 124.00 feet; thence S 89° 56' W 91.8 feet; thence N 0° 02' W 124.00 feet to the point of beginning.

L. N. Dow  
SURVEYOR  
1953

Subscribed and sworn to before me this 27 day of April

New G. Samuels  
NOTARY PUBLIC FOR OREGON  
1956

My commission expires the 29 day of September 1956

Examined and approved by the City of Medford Planning Commission in regular session this the 12<sup>th</sup> day of May 1953

Attest: New G. Samuels  
SECRETARY

M. J. Wray  
PRESIDENT

Examined and approved by the Medford Irrigation District in regular session this the 2 day of June 1953

Attest: J. A. Hoff  
SECRETARY

J. H. Cameron  
PRESIDENT

Examined and approved this 19 day of May 1953

Edward M. McKinstry  
CITY ENGINEER  
1953

Examined and approved this 29 day of June

P. S. Fowler  
COUNTY ASSESSOR  
1953

All taxes paid in full to date this the 29 day of June

Howard Gault  
COUNTY SHERIFF

Examined and recommended for approval of the County Court

Paul D. Byrnes  
COUNTY SURVEYOR

For order of the County Court approving this plat see Volume 36, Page 528, of County Commissioner's Journal of Proceedings.

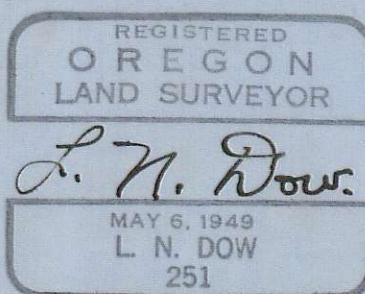
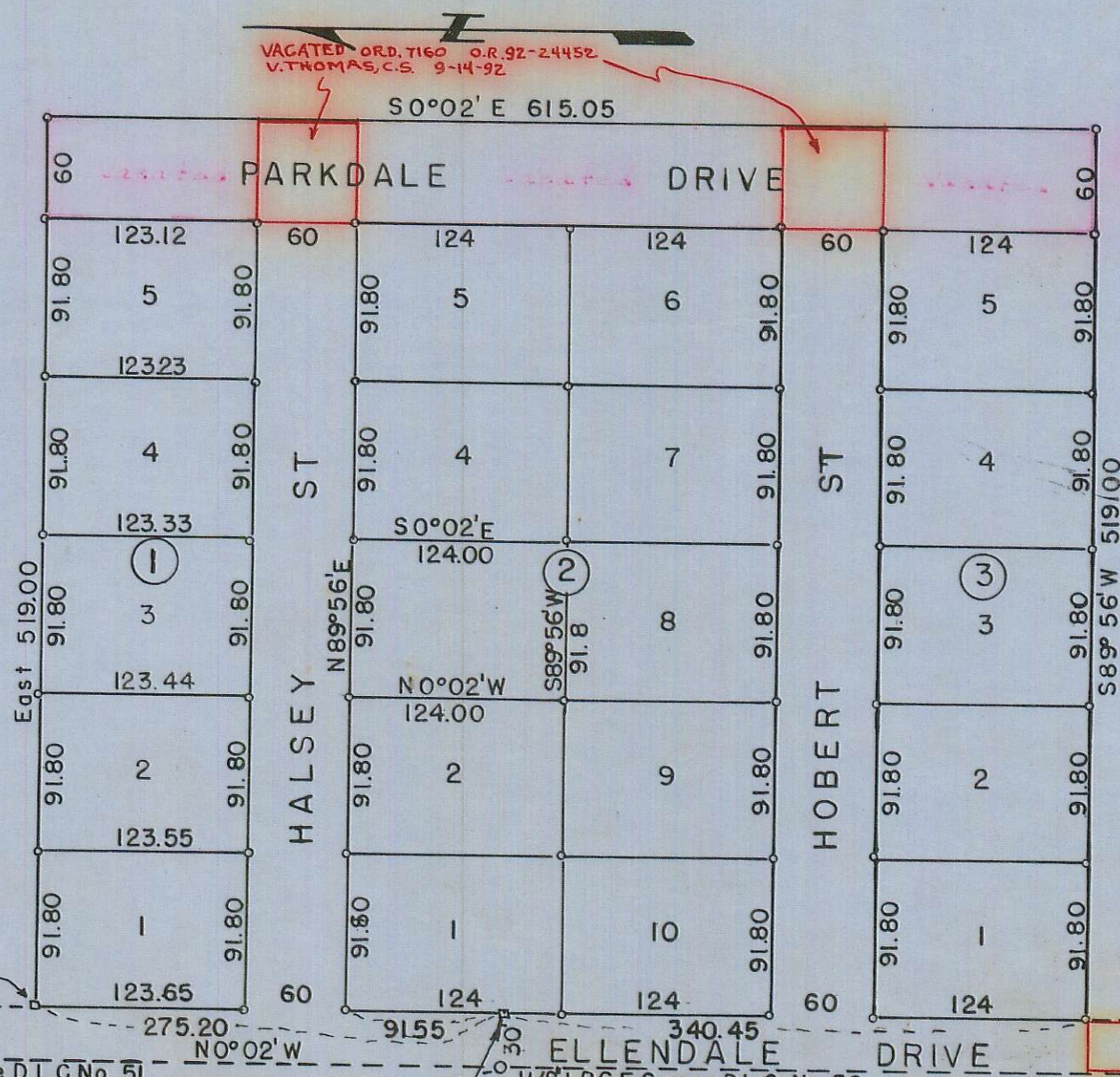
H. R. Carter, County Clerk  
By Myrah Neil  
Deputy COUNTY CLERK 350325

Filed for record this the 1<sup>st</sup> day of July, 1953, at 4:30 o'clock P..M. and recorded in Volume 7 of plats at page 8 of records of Jackson County, Oregon.

H. R. Carter, County Recorder  
By Myrah Neil  
Deputy COUNTY RECORDER

I hereby certify that this tracing is an exact copy of the original plat filed with the County Clerk

L. N. Dow  
SURVEYOR



West Line D.L.C. No. 51  
Gov't Record 2244.00  
Measured 2263.56  
Bearings from Solar Observations  
SCALE 1" = 100'  
INITIAL POINT a Concrete Monument with punch marked brass plate set six inches below ground surface  
VACATED ORD. 7160 O.R. 92-24452 V. THOMAS, C.S. 9-14-92