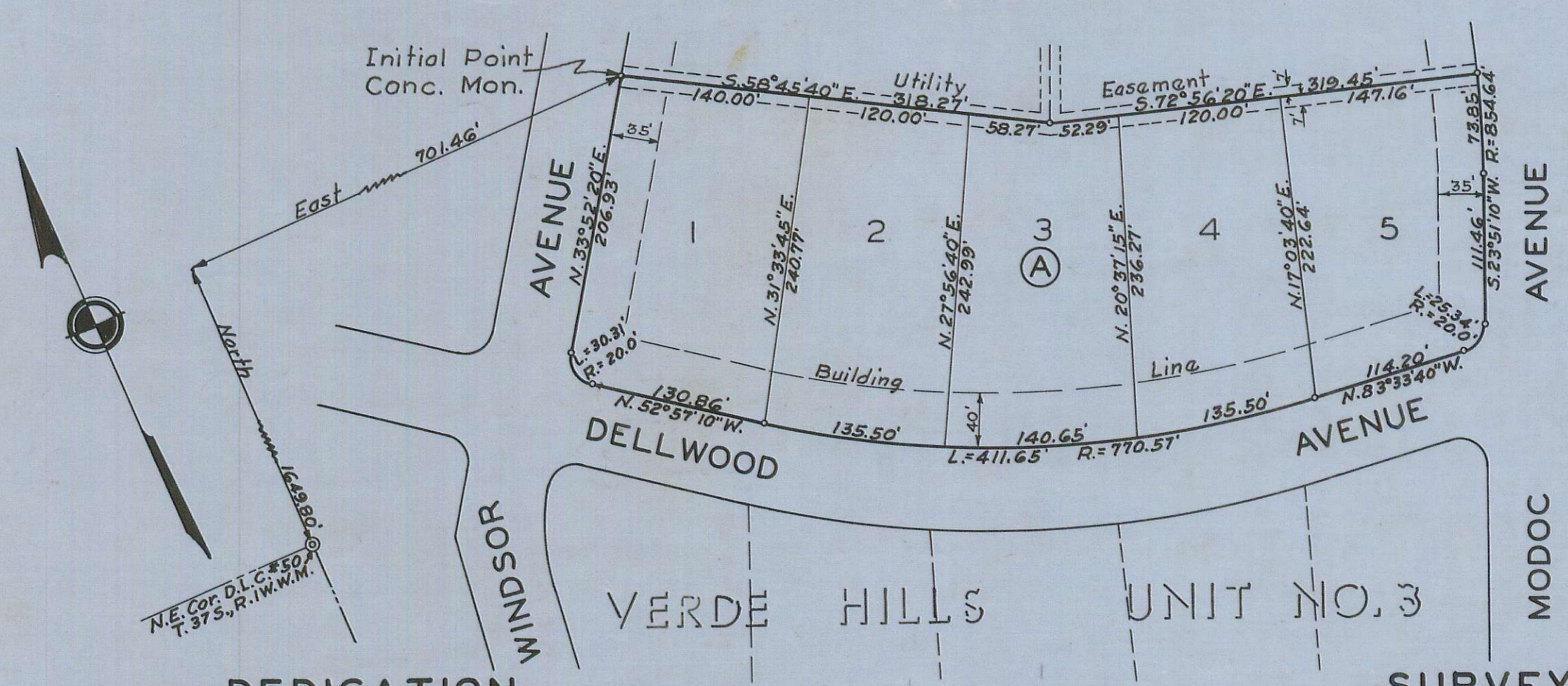
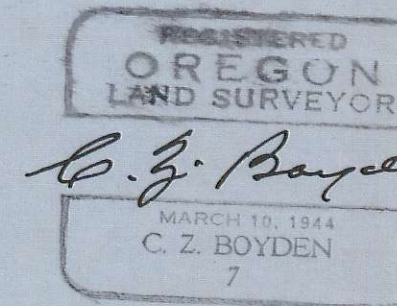


RE-SUBDIVISION OF LOTS 8,9&10, BLOCK NO.1
VERDE HILLS, UNIT NO.3
MEDFORD, OREGON
SCALE: 1"=100'



NOTE:-
Meridian by Astronomical Observation.
Boundary monuments, set 3/4" X 30 iron pins.
Lot corners, set 1/2" X 24" iron pins or longer.

I hereby certify that this tracing is an exact copy of the original plat filed with the County Clerk.
C. Z. Boyden
Surveyor



DEDICATION

KNOW ALL MEN BY THESE PRESENTS, That we, General Development Co., are the owners in fee simple of the lands hereon described, and that we have subdivided the same into lots as shown hereon, and the number and size of the lots and lengths of all lines are plainly set forth, and that this plat is a correct representation of the said subdivision, and we do hereby designate said subdivision as: Re-Subdivision of Lots 8,9 and 10, Block No.1 Verde Hills, Unit No.3, Medford, Oregon.

IN WITNESS WHEREOF we have hereunto set our hands and seals this 9th day of July, 1952.

Jessie L. Carver Witness
Edward Branchfield Witness

General Development Co.
by *John S. Day* President
by *O. B. Waddell* Secretary

STATE OF OREGON } ss.
County of Jackson }

July 9 A.D. 1952.
Personally appeared the above-named *John S. Day* President and *O. B. Waddell* Secretary of the General Development Co. and acknowledged the foregoing instrument to be their voluntary act and deed. Before me:

Jessie L. Carver
Notary Public for Oregon
My commission expires the 5th day of *Sept.*, 1954.

Examined and approved by the City of Medford Planning Commission in regular session this the 15th day of *July*, 1952.
Attest: *J. Wood* Secretary, *John S. Day* President

Examined and approved this 14 day of *JULY*, 1952.
Edward M. Keister
City Engineer

Examined and approved this 11 day of *December*, 1952.
Ormyer
County Assessor

All taxes paid in full to date this the 18 day of *March*, 1953.
Howard Gault
County Sheriff

SURVEYOR'S CERTIFICATE

STATE OF OREGON } ss.
County of Jackson }

I, C.Z. Boyden a duly registered surveyor of the State of Oregon, being first duly sworn, do hereby certify that I have correctly surveyed and marked with proper monuments as provided by law the tract of land hereon shown and the said plat is a correct representation of the same, and the following is an accurate description of the boundary lines; Commencing at the northeast corner of Donation Land Claim No.50, Township 37 South, Range 1 West, Willamette Meridian, Jackson County, Oregon; Thence North 1649.80 feet and East 701.46 feet to a 8" dia. X 24" concrete monument with bronze disk, being the northwest corner of Lot 8, Block 1, Verde Hills, Unit No.3, Medford, Oregon, for the Initial Point; Thence 5.58°45'40"E. 318.27 feet; Thence 5.72°56'20"E. 319.45 feet to the northeast corner of Lot 10, of said Block 1; Thence 73.85 feet on an arc right (which arc has a radius of 854.64 feet and a long chord of S.21°22'40"W. 73.83 feet); Thence S.23°51'10"W. 111.46 feet; Thence 25.34 feet on an arc right (which arc has a radius of 20.00 feet and a long chord of S.60°08'45"W. 23.68 feet); Thence N.83°33'40"W. 114.20 feet; Thence 411.65 feet on an arc right (which arc has a radius of 770.57 feet and a long chord of N.68°15'25"W. 406.77 feet); Thence N.52°57'10"W. 130.86 feet; Thence 30.31 feet on an arc right (which arc has a radius of 20.00 feet and a long chord of N.9°32'25"W. 27.48 feet); Thence N.33°52'20"E. 206.93 feet to the Initial Point.

C. Z. Boyden
Surveyor
Subscribed and sworn to before me this 7th day of *July*, 1952.

Hydah Weil
Notary Public for Oregon
My commission expires the 23rd day of *November*, 1952.

Examined and recommended for approval of the County Court.
Paul B. Nymann
County Surveyor

345826
Filed for record this the 15th day of *April*, 1953, at 2:00 o'clock P.M. and recorded in *7* Volume of plats at page *7* of records of Jackson County, Oregon.

G. R. Carlen
County Recorder
By *Hydah Weil*, deputy

For order of the County Court approving this plat see Volume *36*, Page *415*, of County Commissioners' Journal of Proceedings.
G. R. Carlen
County Clerk
By *Hydah Weil*, deputy