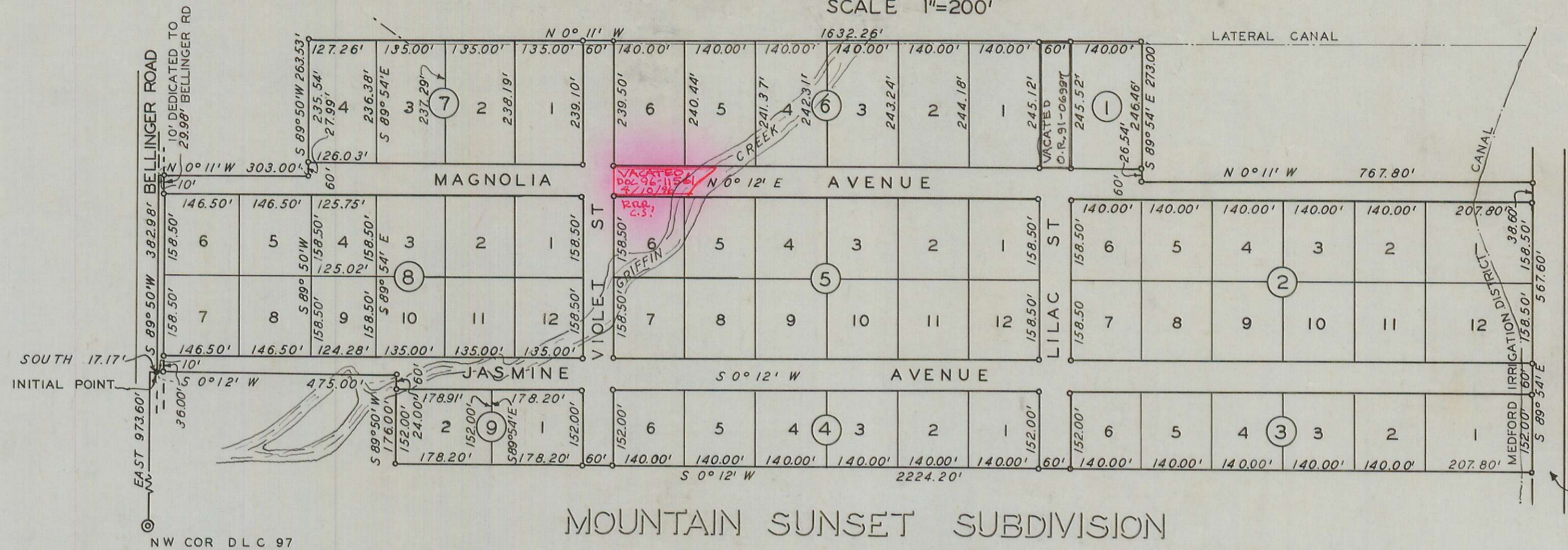


# MEADOW GLADE SUBDIVISION

SITUATE IN DLC 97 T 37 S R2W WM

SCALE 1"=200'



BEARINGS BASED ON RECORD

## DEDICATION

KNOW ALL MEN BY THESE PRESENTS, That we, Howard C. Chilson and L. Vesta Chilson are the owners in fee simple of the lands hereon described, and that we have subdivided the same into lots, blocks, and streets as shown hereon, and the number and size of the lots and lengths of all lines are plainly set forth, and that this plat is a correct representation of the said subdivision, and we do hereby dedicate to the public for public use all streets shown hereon, and we do hereby designate said subdivision as Meadow Glade Subdivision.

IN WITNESS WHEREOF we have hereunto set our hands and seals this 13 day of September 1951

Richard E. Payne Witness  
E. M. Smith Witness

Howard C. Chilson  
L. Vesta Chilson

STATE OF OREGON] ss  
COUNTY OF JACKSON]

Personally came before me, a notary public in and for said County and State, the above named Howard C. Chilson and L. Vesta Chilson, to me personally known to me to be the above named, and executed the above instrument and who acknowledged to me that they did the same freely and voluntarily. Dated this 13 day of September 1951

Mabel Wiley  
Notary Public for Oregon

My commission expires the 8 day of May 1954

Examined and approved by the City of Medford Planning Commission in regular session this 11 day of September 1951

W. Woodford Secretary M. J. McKay President

Examined and approved by the Medford Irrigation District in regular session this the 15 day of May 1951

J. G. L. S. Baker Secretary J. Cameron President

Examined and approved this 14 day of September 1951

C. Myers  
County Assessor

All taxes paid in full to date this the 14 day of September 1951

Howard Gault  
County Sheriff

## ENGINEER'S CERTIFICATE

STATE OF OREGON] ss  
COUNTY OF JACKSON]

I, J. H. Clabby, a duly registered engineer of the State of Oregon, being first duly sworn do hereby certify that I have correctly surveyed and marked with proper monuments the tract of land hereon shown and the said plat is a correct representation of the survey made by me on the ground; that I have set a proper monument as provided by law, a brass tablet in a concrete monument six inches below the surface of the ground, indicating the initial point of said survey, and the following is an accurate description of the boundary lines of the subdivision: Commencing at the northwest corner of Donation Land Claim Number 97 in Township 37 South, Range 2 West, Willamette Meridian, Jackson County, Oregon; Thence East 973.60 feet; Thence South 17.17 feet to a brass tablet in a concrete monument, the Initial Point of Beginning; Thence South 0° 12' West 475.00 feet; Thence South 89° 50' West 176.00 feet to the east line of the Mountain Sunset Subdivision; Thence South 0° 12' West along said line 2224.20 feet to the north line of the Jacksonville Phoenix Highway; Thence South 89° 54' East along said line 567.60 feet; Thence North 0° 11' West 767.80 feet; Thence South 89° 54' East 273.00 feet; Thence North 0° 11' West 1632.26 feet; Thence South 89° 50' West 263.53 feet; Thence North 0° 11' West 303.00 feet; Thence South 89° 50' West 382.98 feet to the point of beginning.

J. H. Clabby  
Engineer

Subscribed and sworn to before me this 7th day of September 1951

Norman L. Stender  
Notary Public for Oregon

My commission expires the 27th day of June 1952

Examined and recommended for approval of the County Court

Paul B. Downing  
County Surveyor

For order of the County Court approving this plat see Volume 35 Page 570 of County Commissioners' Journal of Proceedings

W. J. Linton  
County Clerk

328746

Filed for record this the 22 day of May 1952 at 3:50 o'clock P. M. and recorded in Volume 6 of Plats at Page 77 of records of Jackson County

W. J. Linton  
County Recorder

I hereby certify that this tracing is an exact copy of the original plat filed with the County Recorder.

J. H. Clabby  
Engineer

