

WEST SIDE HEIGHTS SUBDIVISION

LOCATED IN S.36,T.37S.,R.2W.,(W.M.)
JACKSON COUNTY, OREGON.

DEDICATION

KNOW ALL MEN BY THESE PRESENTS, That we, Donald E. Herried and Joan M. Herried, are the owners in fee simple of the lands hereon described, and that we have subdivided the same into lots, blocks and streets as shown hereon, and the number and size of the lots and lengths of all lines are plainly set forth, and that this plat is a correct representation of the said subdivision, and we do hereby dedicate to the public for public use all streets and alleys and easements for public utilities, shown hereon, and we do hereby designate said subdivision as WEST SIDE HEIGHTS

IN WITNESS WHEREOF we have hereunto set our hands and seals this 25th day of March, 1952
Witness Donald E. Herried SEAL
Witness Joan M. Herried SEAL

STATE OF OREGON }
COUNTY OF JACKSON } ss.

Personally came before me, a notary public in and for said County and State, the above named Donald E. Herried and Joan M. Herried of said State and County, to me personally known to be the above named, and executed the above instrument and who acknowledged to me that they did the same freely and voluntarily.

Dated this 25th day of March, 1952
Mark A. Goldy
NOTARY PUBLIC FOR OREGON
My commission expires the 28th day of December 1952

SURVEYOR'S CERTIFICATE

STATE OF OREGON }
COUNTY OF JACKSON } ss.

I, L. N. Dow, a duly registered surveyor of the State Of Oregon, being first duly sworn do hereby certify that I have correctly surveyed and marked with proper monuments, as provided by law, (the initial point being a concrete monument with brass plate buried six inches below the surface) the tract of land hereon shown and the said plat is a correct representation of the same. The following is an accurate description of the boundary lines:

Beginning at a concrete monument, with punch marked brass plate, on the north line of Stewart Avenue, said monument being S 89° 52' W 915.80 feet, thence North 30.00 feet from the northwest corner of Donation Land Claim No. 84, in Township 37 South, Range 2 West, Willamette Meridian, Jackson County, Oregon; thence North 481.23 feet, thence S 89° 56' E 913.58 feet, thence S 0° 15' E 508.03' to the said northwest corner of Donation Land Claim No. 84, thence S 89° 52' W 915.80 feet, thence North 30.00 feet to the point of beginning.

L. N. Dow
Surveyor

Subscribed and sworn to before me this 25th day of March, 1952

My commission expires the 28th day of December, 1952
Mark A. Goldy
NOTARY PUBLIC FOR OREGON

Examined and approved by the City of Medford Planning Commission in regular session this the 25th day of March, 1952

Attest: George G. Gault
SECRETARY

M. J. DeWray
PRESIDENT

Examined and approved by the Medford Irrigation District in regular session this the 1st day of April, 1952

Attest: J. A. Alford
SECRETARY

Edmund W. McKinley
PRESIDENT

Examined and approved this 5 day of APRIL, 1952

Edward W. McKinley
CITY ENGINEER

Examined and approved this 7 day of April, 1952

O. Myers
COUNTY ASSESSOR

All taxes paid in full to date this the 7 day of April, 1952

Howard Gault
COUNTY SHERIFF

Examined and recommended for approval of the County Court.

Paul D. Gunning
COUNTY SURVEYOR

For order of the County Court approving this plat see Volume 35, Page 514, of County Commissioners' Journal of Proceedings.

326774

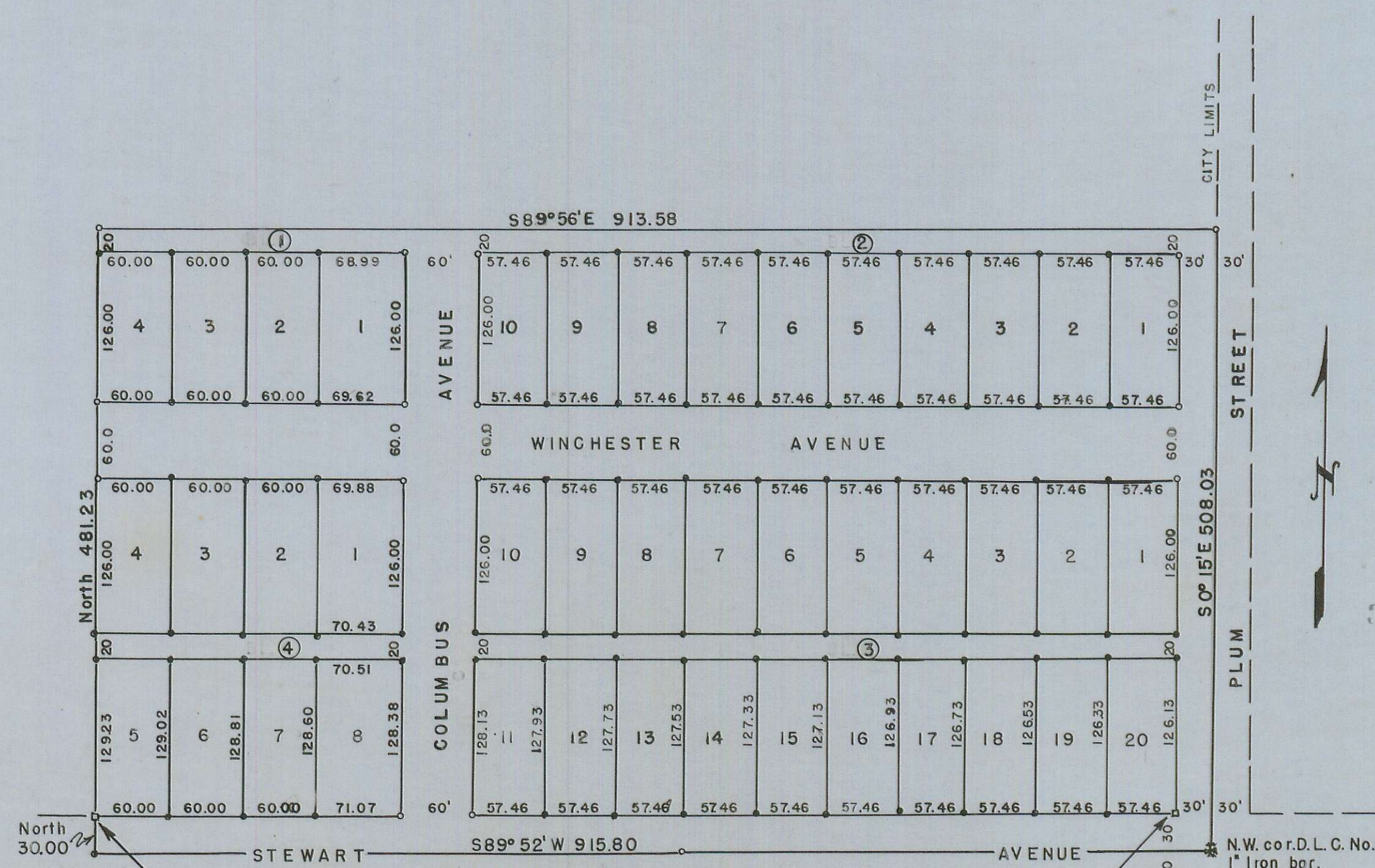
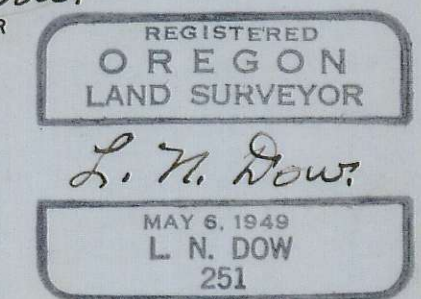
Filed for record this the 17 day of April, 1952, at 10:30 o'clock A.M. and recorded in 6 Volume of plats at page 73 of records of Jackson County, Oregon.

COUNTY CLERK W. Blanton

COUNTY RECORDER W. Blanton

I hereby certify that this tracing is an exact copy of the original plat filed with the County Clerk

L. N. Dow
SURVEYOR



INITIAL POINT, Concrete monument with punch marked brass plate, 6" below surface.
SCALE 1" = 100'
Bearings used are from Astronomical observations
• Block corners are 1" iron pipe 30" long
• Lot corners are 5/8" iron bars 30" long