

# MOUNTAIN VIEW

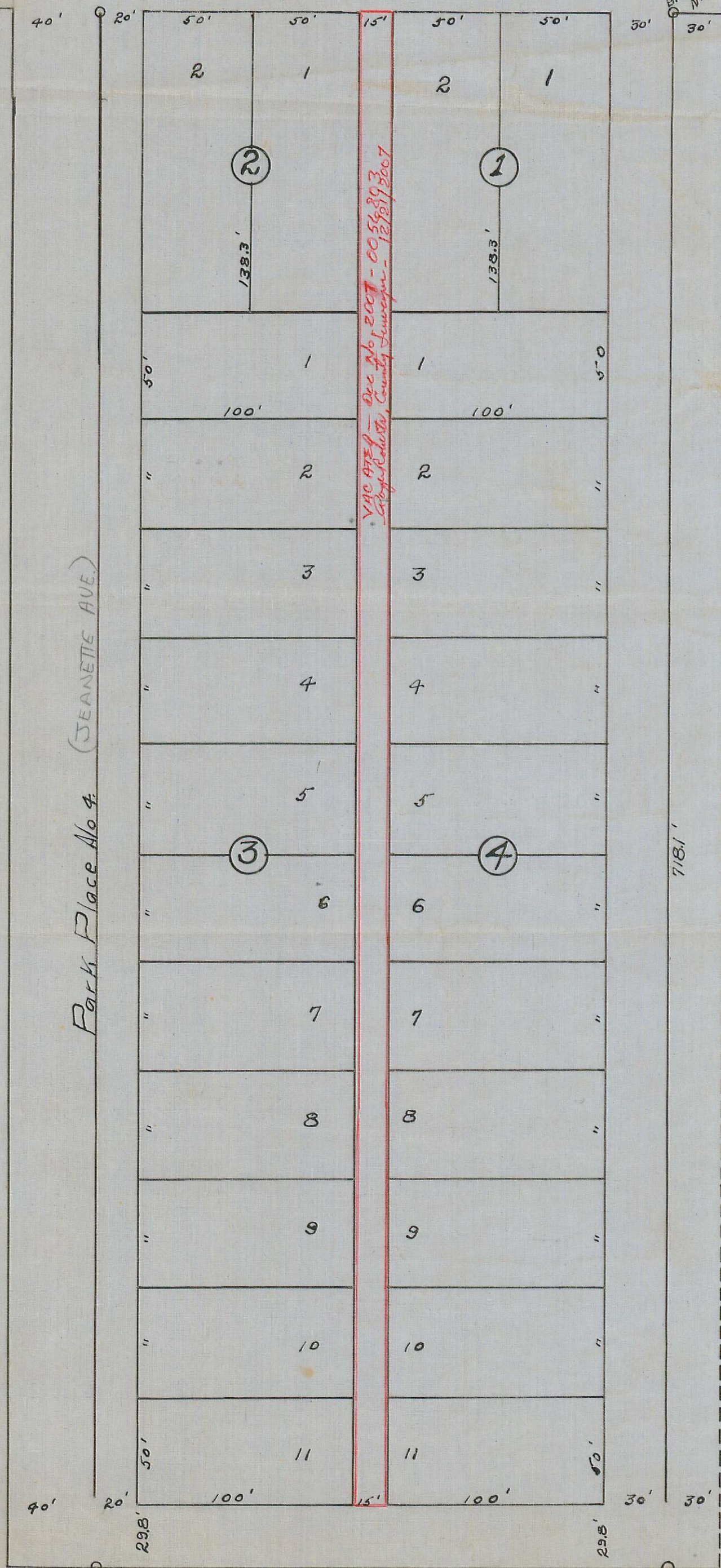
Prune Street

April 1909

Scale 1 in = 50 ft.

E.B. Sawyer and Son  
Civil Engineers

NE cor lot 3  
block 2  
Nickell Addition



Description of Mountain View:- Starting at the N.E. cor. of lot 3 block 2. of Nickell Addition to Medford Oregon thence S. 718.1ft. thence W. 265ft. thence N. 718.1ft. thence E. 265ft. to place of beginning containing 4.37 Acres.

Dedication:-  
Know all men by these presents that we are the owners in <sup>simple</sup> fee of the above described tract of land and that we have subdivided the same into lots blocks and streets as shown on the map of same, herewith attached, and on which the number and size of lots and length of all lines are plainly set forth and all other matters appertaining to the subdivision of said tract are shown on said map, and we hereby dedicate to the Public for Public Highways all the streets shown on said map and we hereby designate said tract as Mountain View and have so named it on the map here to

Done in the presence of  
Jesse W. Miles  
T. W. Miles  
County of Jackson } ss.  
State of Oregon }

Gold Ray Realty Co  
By C.R. Ray President  
Attest H.C. Stoddard Secretary

On this 20th day of April 1909. Personally appeared before me a Notary Public in and for said State and County the within named C.R. Ray as President and H.C. Stoddard as Secretary to me personally known, who, being duly sworn did say that they are the president and and secretary of Gold Ray Realty Co and that the seal affixed to said instrument is the corporate seal of said corporation and that said instrument was signed and sealed in behalf of said corporation by authority of its board of directors, and said C.R. Ray and H.C. Stoddard acknowledged said instrument to be the free act and deed of said corporation.

In witness whereof I have hereunto set my hand and seal.  
Jesse W. Miles  
Notary Public  
Examined and recommended for approval this 5th day of May 1909.  
Frank Grisey  
County Surveyor  
Examined and recommended for approval of County Commissioners Court this 5 day of May 1909.  
W.T. Grieve  
Assessor  
For order of County Commissioners Court approving this plat see Vol 13 Page 348 of Commissioners Journal of Proceedings  
W.R. Coleman  
Clerk of Jackson County

I hereby certify to having examined and approved this plat.  
B. M. B. Towne  
City Engineer  
Examined and approved by the Council of the city of Medford this day of 1909. and recorded in Vol of plats.

Filed and recorded this 7 day of May 1909. and recorded in Vol. 1 Page 171 at 1 o'clock in the records of Jackson County Oregon.  
R. L. Burnett  
County Recorder

Filed May 5, 1909  
W.R. Coleman  
Clerk  
By m. B. Towne  
Deputy.