

**VERDE HILLS
UNIT NO. 2
BEING A PORTION OF
EXTENSION OF SISKIYOU HEIGHTS ADD.
TO THE CITY OF MEDFORD
SCALE - 1" = 100'**

DEDICATION

KNOW ALL MEN BY THESE PRESENTS, That we, General Development Co., are the owners in fee simple of the lands hereon described, and that we have subdivided the same into lots, blocks and streets as shown hereon, and the number and size of the lots and lengths of all lines are plainly set forth, and that this plat is a correct representation of the said subdivision, and we do hereby dedicate to the public for public use all streets and easements for public utilities, shown hereon, and we do hereby designate said subdivision as, Verde Hills-Unit No. 2.

In Witness Whereof we have hereunto set our hands and seals this 10th day of Dec., 1951.
 by Jessie L. Camer Witness
 by W. B. Roberts Witness
 General Development Co.
 by John S. Day President
 by O. B. Waddell Secretary

STATE OF OREGON } ss.
 County of Jackson }

Personally came before me, a notary public in and for said County and State, the above named John S. Day President and O. B. Waddell Secretary of the General Development Co. of said State and County, to me personally known to be the above named, and executed the above instrument and who acknowledged to me that they did the same freely and voluntarily. Dated this 10th day of Dec., 1951.

My commission expires the 5th day of Sept., 1954.
Jessie L. Camer
 Notary Public for Oregon

SURVEYOR'S CERTIFICATE

STATE OF OREGON } ss.
 County of Jackson }

I, C. Z. Boyden a duly registered surveyor of the State of Oregon, being first duly sworn, do hereby certify that I have correctly surveyed and marked with proper monuments as provided by law, the tract of land hereon shown and the said plat is a correct representation of the same, and the following is an accurate description of the boundary lines: Commencing at the Northeast corner of Donation Land Claim No. 50, Township 37 South, Range 1 West, Willamette Meridian, Jackson County, Oregon; Thence North 1108.82 feet and West 407.04 feet to an 8" Dia. X 24" Concrete Monument with Bronze Disc located on the Northerly boundary of Siskiyou Boulevard South in the Extension of Siskiyou Heights Addition to the City of Medford for the Initial Point; Thence S. 84° 13' W. 354.13 feet; Thence 194.33 feet on an arc right (which arc has a radius of 1781.5 feet and a long chord of S. 87° 20' 30" W. 194.25 feet); Thence N. 89° 32' W. 152.7 feet; Thence 15.68 feet on an arc right (which arc has a radius of 10.0 feet and a long chord of N. 44° 37' W. 14.12 feet); Thence N. 0° 18' E. 590.33 feet; Thence 15.68 feet on an arc right (which arc has a radius of 10.0 feet and a long chord of N. 45° 13' E. 14.12 feet); Thence S. 89° 52' E. 415.62 feet; Thence S. 0° 18' W. 40.10 feet; Thence S. 89° 42' E. 300.98 feet; Thence S. 0° 18' W. 504.47 feet; Thence 29.29 feet on an arc right (which arc has a radius of 20.0 feet and a long chord of S. 42° 15' 30" W. 26.74 feet) to the Initial Point.

Subscribed and sworn to before me this 16 day of November, 1951.

My commission expires the 28 day of February, 1954.
Ann Hamilton
 Notary Public for Oregon

Examined and approved by the City of Medford Planning Commission in regular session this the 11 day of December, 1951.

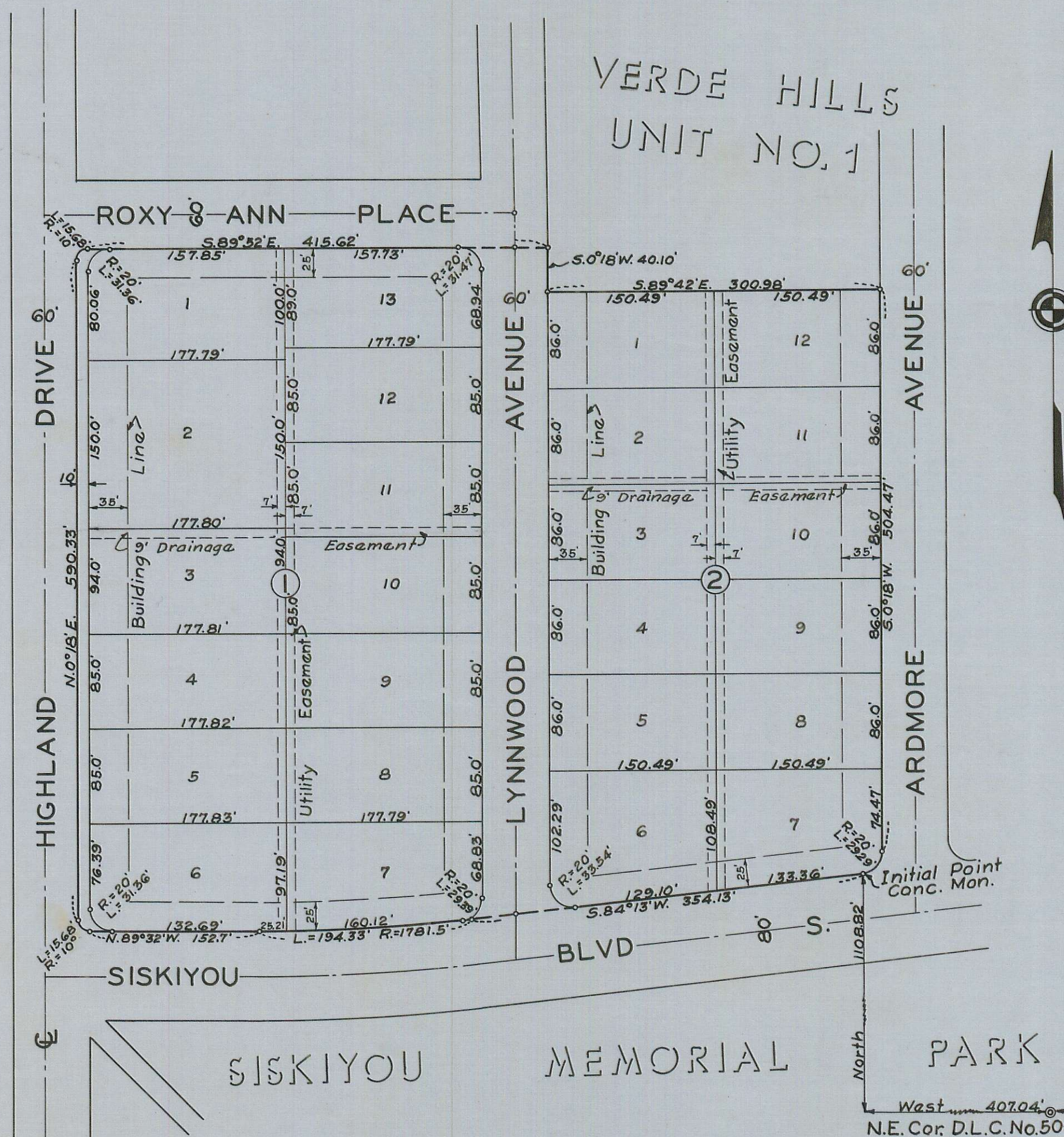
Attest: John S. Day Secretary
M. J. Wray President

Examined and approved this 3 day of January, 1952.
J. Myers
 County Assessor

All taxes paid in full to date this the 17 day of January, 1952.
Howard Gault
 County Sheriff

For order of the County Court approving this plat see Volume 35, Page 419, of County Commissioners' Journal of Proceedings.

321559
 Filed for record this the 18 day of Jan., 1952, at 2 o'clock P.M. and recorded in 6 Volume of plats at page 70 of records of Jackson County, Oregon.
W. J. Plater
 County Recorder



NOTE:-
 Meridian by Astronomical Observation.
 Boundary monuments, set 5/8" or 3/4" by 30" Iron pins.
 Lot corners, set 1/2" Iron pins 24" or longer.
 Block corners rounded to a 20 foot radius as shown.

I hereby certify that this tracing is an exact copy of the original plat filed with the County Clerk.

C. Z. Boyden
 Surveyor

Examined and recommended for approval of the County Court.

Paul O. Hummer
 County Surveyor

