

DESCRIPTION.
 Beginning at a 1/2 inch x 32 inch iron pin set in concrete 12" x 12" x 18" on the North line of Donation Land Claim Number 59, in Township 37 South, Range 2 West of the Willamette Meridian, and North 89° 51' East 1260.0 feet from the North West Corner of said D. L. C. 59; thence South 75° 49' West 28.7 feet; thence South 0° 13' West 1098.9 feet; thence North 87° 19' West 390.2 feet; thence South 0° 30' West 749.0 feet; thence South 89° 53' West 165.6 feet; thence along the Northeasterly line of the Pacific Highway on the arc of a 0° 24.88' curve to the right (the chord bears S. 29° 26' E.) 329.7 feet; thence South 28° 45' East 153.7 feet to the Northwest corner of Midway Subdivision; thence North 88° 47' East 371.3 feet; thence N. 0° 07' West 37.0 feet and thence South 89° 51' East 1789.5 feet along the Northerly line of said Subdivision; thence North 0° 03' East 358.5 feet; thence South 89° 49' East 528.9 feet to the center of Bear Creek; thence down Bear Creek North 30° 43' West 1018.0 feet and North 51° 16' West 601.0 feet; thence North 0° 11' West 614.3 feet to a 1/2 inch iron pin set in concrete 12" x 12" x 18"; thence South 89° 51' West 1339.5 feet along the North line of said D.L.C. 59 to the beginning.

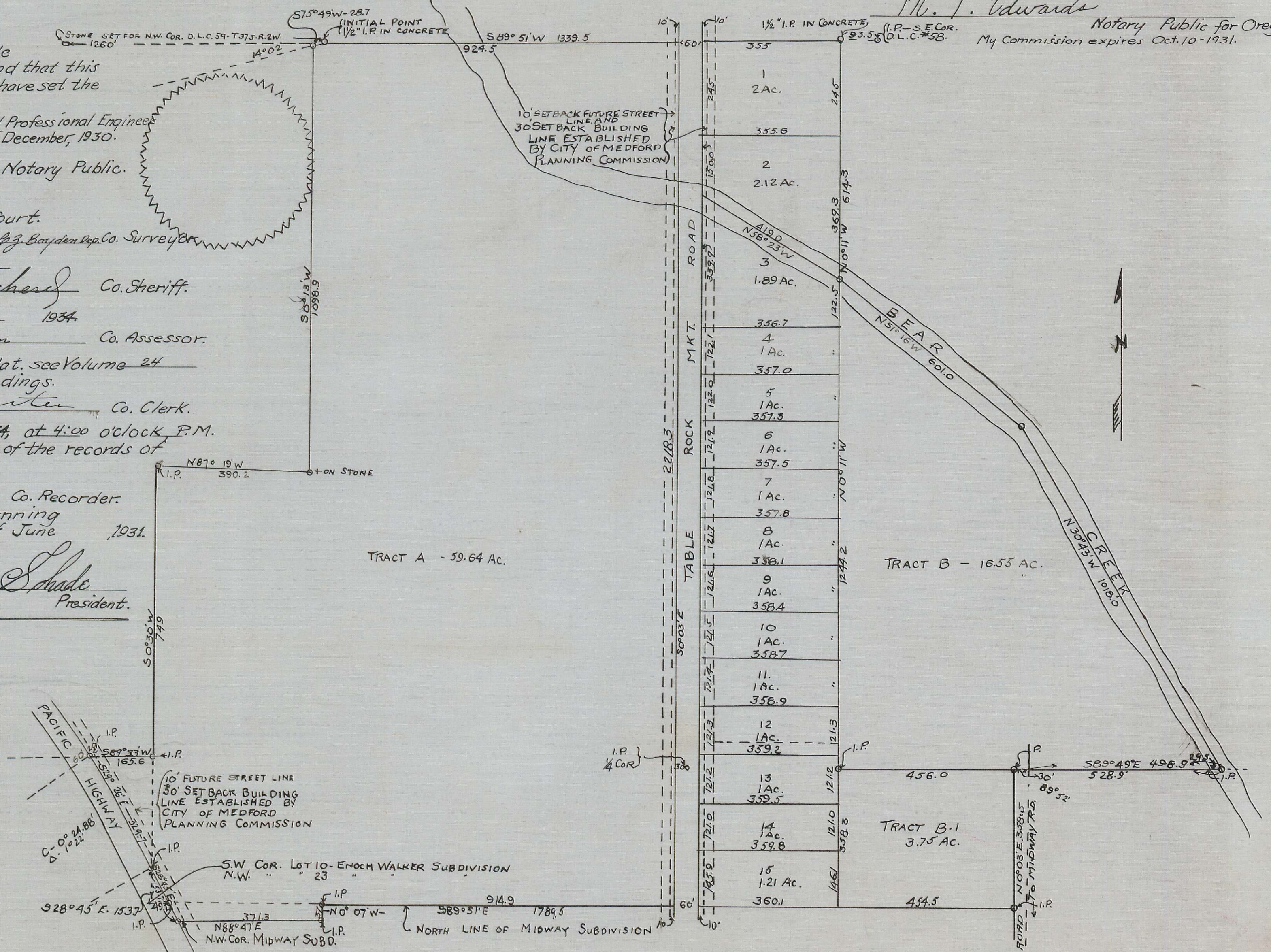
DEDICATION.
 KNOW ALL MEN BY THESE PRESENTS, that we, A.W. Pipes and Maudel V. Pipes, his wife, Bert Anderson and Eva Evans Anderson, his wife, are the owners in fee simple of the above described tract and that we have subdivided the same into lots and roads as shown hereon and the number and size of the lots and the length of all lines are plainly set forth, and that this plat is a correct representation of said subdivision, and we do hereby dedicate to the public for public use the roads shown hereon, and we do hereby designate said subdivision as GARDEN ACRES.
 In witness whereof we have hereunto set our hands and seals this 31st day of October, 1930

Fletcher J. Fish M. T. Edwards Maudel V. Pipes A.W. Pipes SEAL Maudel V. Pipes SEAL Bert Anderson SEAL Eva Evans Anderson

State of Oregon }
 County of Jackson } s.s. Personally came before me, a Notary Public in and for said County and State, the above named A.W. Pipes, Maudel V. Pipes, Bert Anderson, Eva Evans Anderson of said State and County, to me personally known to be the above named and executed the above instrument, and who acknowledged to me that they did the same freely and voluntarily.
 Done this 31 day of October, 1930.

M. T. Edwards
 Notary Public for Oregon.
 My Commission expires Oct. 10 - 1931.

SURVEYOR'S CERTIFICATE.
 I, W.H. Wood, hereby certify that this map was made from notes taken during an actual survey in the field, and that this map is a correct representation of said survey, and that I have set the corners as hereon designated.
 W. H. Wood Registered Professional Engineer
 Subscribed and sworn to before me, this 19th day of December, 1930.
 Clara M. Wood Notary Public.
 NOTARY PUBLIC FOR OREGON
 My commission expires April 1, 1932
 Examined and recommended for approval of County Court.
 Paul B. Rymming by G. J. Boyden Prop. Co. Surveyor
 All taxes paid in full to date November 23, 1934
 Walter J. Olmachers Co. Sheriff.
 Examined and approved this 9th day of October 1934.
 J. B. Colman Co. Assessor.
 For order of County Commissioners approving this plat, see Volume 24 Page 255 of Commissioner's Journal of Proceedings.
 108422
 G. Plaster Co. Clerk.
 Filed for record this 5 day of December 1934 at 4:00 o'clock P.M. and recorded in Volume 5 of Plats, Page 65 of the records of Jackson County, Oregon.
 G. Plaster Co. Recorder.
 Examined and approved by the City of Medford Planning Commission, in regular session, this 22nd day of June 1931.
 Attest
 Secretary. President.



MAP OF GARDEN ACRES
 IN D.L.C. 59, TP. 37 S., R. 2 W., W. M.
 OCT. 1930 POWELL & WOOD, ENGRS.
 Scale 1 inch to 200 feet.

Copy of Original Plat.
 Dec. 1, 1936. By F.M.P.
 Checked By C.Z.B.