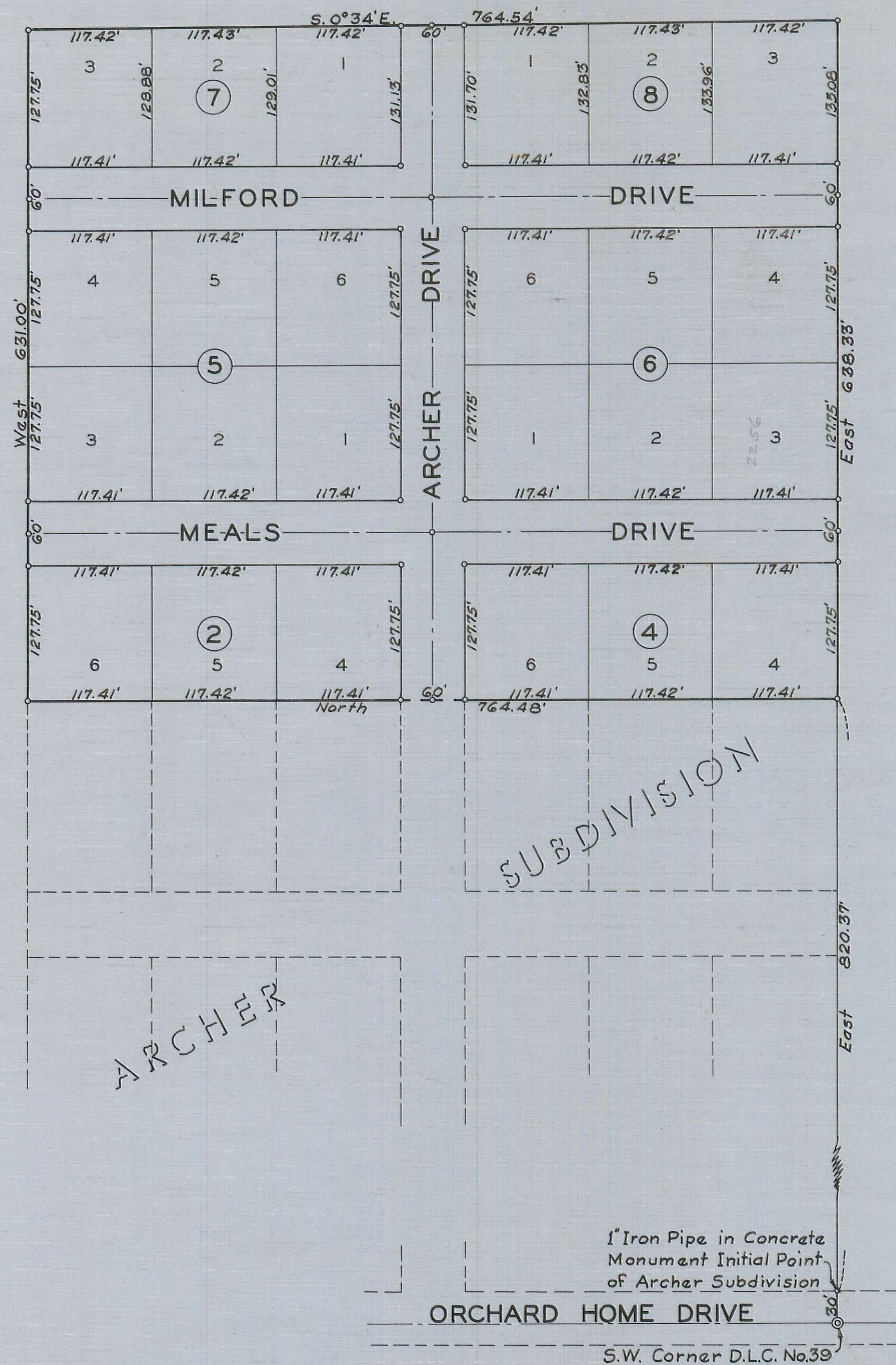
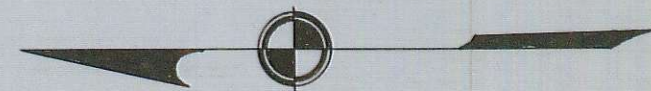


**RE-SUBDIVISION OF LOTS 4 TO 8 INCLUSIVE OF BLOCK 2
AND LOTS 4 TO 8 INCLUSIVE OF BLOCK 4 OF
ARCHER SUBDIVISION**
LOCATED IN SECTION 1, T.38 S., R.2 W.W.M.
SCALE: 1"=100'



DEDICATION

KNOW ALL MEN BY THESE PRESENTS, That we, John A. Meals and Bessie Mae Meals, are the owners in fee simple of the lands hereon described, and that we have subdivided the same into lots, blocks and streets as shown hereon, and the number and size of the lots and lengths of all lines are plainly set forth, and that this plat is a correct representation of the said subdivision, and we do hereby dedicate to the public for public use all streets, shown hereon, and we do hereby designate said subdivision as, Re-Subdivision of Lots 4 to 8 inclusive of Block 2 and Lots 4 to 8 inclusive of Block 4 of Archer Subdivision.

IN WITNESS WHEREOF we have hereunto set our hands and seals this 3rd day of February, 1951.

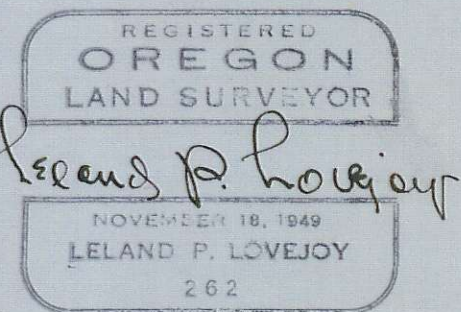
John A. Meals Witness Harry W. Anderson
Bessie Mae Meals Witness W.C. Smith

STATE OF OREGON } ss.
County of Jackson }
Personally came before me, a notary public in and for said County and State, the above named John A. Meals and Bessie Mae Meals of said State and County, to me personally known to be the above named, and executed the above instrument and who acknowledged to me that they did the same, freely and voluntarily.
Dated this 3rd day of February, 1951.
Ray J. Marks
Notary Public for Oregon
My commission expires the 1st day of October, 1954

Examined and approved by the City of Medford Planning Commission in regular session this the 9th day of January, 1951.
Attest: Raymond Ford Secretary M. J. Wray President

Examined and approved by the Medford Irrigation District in regular session this the 6th day of MARCH, 1951.
Attest: Edward Leach Secretary J. Cameron President

I hereby certify that this tracing is an exact copy of the original plat filed with the County Clerk.
L. P. Lovejoy
Surveyor



SURVEYOR'S CERTIFICATE

STATE OF OREGON } ss.
County of Jackson }
I, L.P. Lovejoy a duly registered surveyor of the State of Oregon, being first duly sworn, do hereby certify that I have correctly surveyed and marked with proper monuments the tract of land hereon shown and the said plat is a correct representation of the survey made by me on the ground; that I planted the proper monuments as provided by law, and the following is an accurate description of the boundary lines of the subdivision: This is a re-subdivision of Lots 4 to 8 inclusive of Block 2 and Lots 4 to 8 inclusive of Block 4 of Archer Subdivision.

L. P. Lovejoy
Surveyor
Subscribed and sworn to before me this 3 day of February, 1951.

Mary Elizabeth Cronin
Notary Public for Oregon
My commission expires the 1 day of January, 1954

Examined and approved this 16 day of February, 1951.
Myers
County Assessor

All taxes paid in full to date this the 16 day of February, 1951.
Howard Dault
County Sheriff

Examined and recommended for approval of the County Court.
Paul D. Ryming
County Surveyor

For order of the County Court approving this plat see Volume 35, Page 12, of County Commissioners' Journal of Proceedings.
E. P. Cantor
County Clerk

303105
Filed for record this the 13 day of Mar., 1951, at 4:10 o'clock P.M. and recorded in 6 Volume of plats at page 67 of records of Jackson County, Oregon.
E. P. Cantor
County Recorder

ORCHARD HOME DRIVE
S.W. Corner D.L.C. No. 39