

DREW ADDITION IN THE CITY OF MEDFORD, OREGON SCALE: 1" = 40'

DEDICATION

KNOW ALL MEN BY THESE PRESENTS, That we, Thomas P. Caldwell and Alice Caldwell, are the owners in fee simple of the lands hereon described, and that we have subdivided the same into lots, blocks and streets as shown hereon, and the number and size of the lots and lengths of all lines are plainly set forth, and that this plat is a correct representation of the said subdivision, and we do hereby dedicate to the public for public use all streets, shown hereon, and we do hereby designate said subdivision as, DREW ADDITION.

IN WITNESS WHEREOF we have hereunto set our hands and seals this 11th day of April, 1950.

Walter A. Hoffbuhr Witness
Nelva C. Hoffbuhr Witness

Thomas P. Caldwell
Alice Caldwell

STATE OF OREGON } ss.
County of Jackson }

Personally came before me, a notary public in and for said County and State, the above named Thomas P. Caldwell and Alice Caldwell, of said State and County, to me personally known to be the above named, and executed the above instrument and who acknowledged to me that they did the same freely and voluntarily. Dated this 11th day of April, 1950.

H. O. Martin
Notary Public for Oregon

My commission expires the 30th day of March, 1951.

SURVEYOR'S CERTIFICATE

STATE OF OREGON } ss.
County of Jackson }

I, J.A. Hoffbuhr a duly registered surveyor of the State of Oregon, being first duly sworn, do hereby certify that I have correctly surveyed and marked with proper monuments the tract of land hereon shown and the said plat is a correct representation of the survey made by me on the ground; that I planted a proper monument as provided by law, a Concrete Monument with 2 1/2" Brass Disc. set six inches below the surface of the ground, indicating the initial point of said survey, and the following is an accurate description of the boundary lines of the subdivision: Commencing at the Northwest corner Donation Land Claim No. 84, Township 37 South, Range 2 West, Willamette Meridian, Jackson County, Oregon; Thence North 89° 53' 30" East along the north line of said D.L.C. No. 84, 1299.70 feet; Thence North 0° 40' West 30.00 feet to a Concrete Monument with 2 1/2" Brass Disc for the Initial Point of Beginning; Thence South 89° 53' 30" West 30.00 feet from and parallel with the north line of said D.L.C. No. 84 200.00 feet; Thence North 0° 40' West 204.00 feet; Thence North 89° 53' 30" East 200.00 feet to a Concrete Monument with 2 1/2" Brass Disc; Thence South 0° 40' East 204.00 feet to the point of Beginning.

J. A. Hoffbuhr
Surveyor

Subscribed and sworn to before me this 1st day of April, 1950.

W. H. Macintosh
Notary Public for Oregon

My commission expires the 22 day of August, 1952

Examined and approved by the City of Medford Planning Commission in regular session this the 11 day of April, 1950.

Attest: James Woodard Secretary
Ray Lanthier President

Examined and approved this 11 day of April, 1950.

Edward M. McKinstry
City Engineer

Examined and approved this 15 day of April, 1950.

April C. Myers
County Assessor

All taxes paid in full to date this the 15 day of April, 1950.

Howard Abbott
County Sheriff

Examined and recommended for approval of the County Court.

Paul B. Symington
County Surveyor

For order of the County Court approving this plat see Volume 34, Page 170, of County Commissioners' Journal of Proceedings.

H. P. Carter
County Clerk

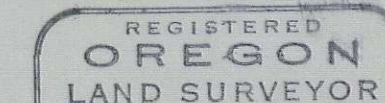
283976

Filed for record this the 27 day of April, 1950, at 10 o'clock A.M. and recorded in 6 Volume of plats at page 77 of records of Jackson County, Oregon.

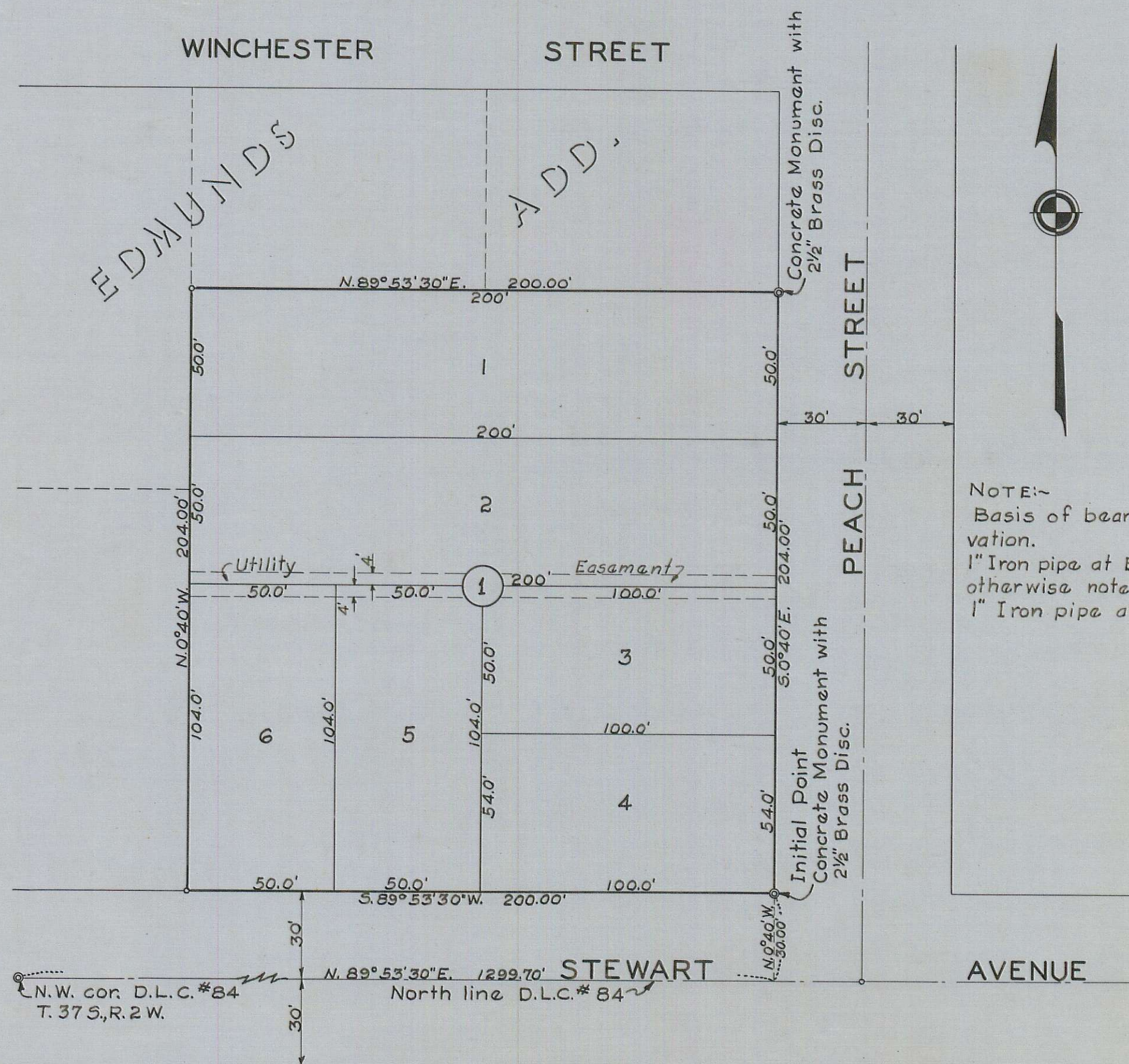
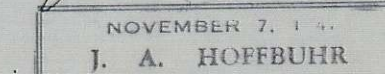
H. P. Carter
County Recorder

I hereby certify that this tracing is an exact copy of the original plat filed with the County Clerk.

J. A. Hoffbuhr
Surveyor



J. A. Hoffbuhr



NOTE:-
Basis of bearings, by Solar observation.
1" Iron pipe at Block corners unless otherwise noted.
1" Iron pipe at all lot corners.