

MORSE SUBDIVISION IN THE CITY OF MEDFORD OREGON

EXAMINED AND APPROVED BY THE CITY OF MEDFORD PLANNING COMMISSION IN SPECIAL SESSION
THIS 21 DAY OF July 1949

ATTESTED:

W. Woodard
SECRETARY

Paul Sawbridge
PRESIDENT

EXAMINED AND APPROVED THIS 21 DAY OF JULY 1949

Edward M. Vintony
CITY ENGINEER

EXAMINED AND APPROVED THIS 10 DAY OF November 1949

C. Myers
COUNTY ASSESSOR

ALL TAXES PAID IN FULL TO DATE, THIS THE 10 DAY OF November 1949

Howard Gault
COUNTY SHERIFF

EXAMINED AND RECOMMENDED FOR APPROVAL OF THE COUNTY COURT

Paul D. Manning
COUNTY SURVEYOR

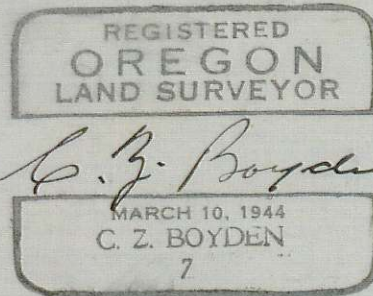
FOR THE ORDER OF THE COUNTY COURT APPROVING THIS PLAT SEE VOLUME 33 PAGE 553 OF COUNTY COMMISSIONERS' JOURNAL OF PROCEEDINGS.

J. Planter
COUNTY CLERK

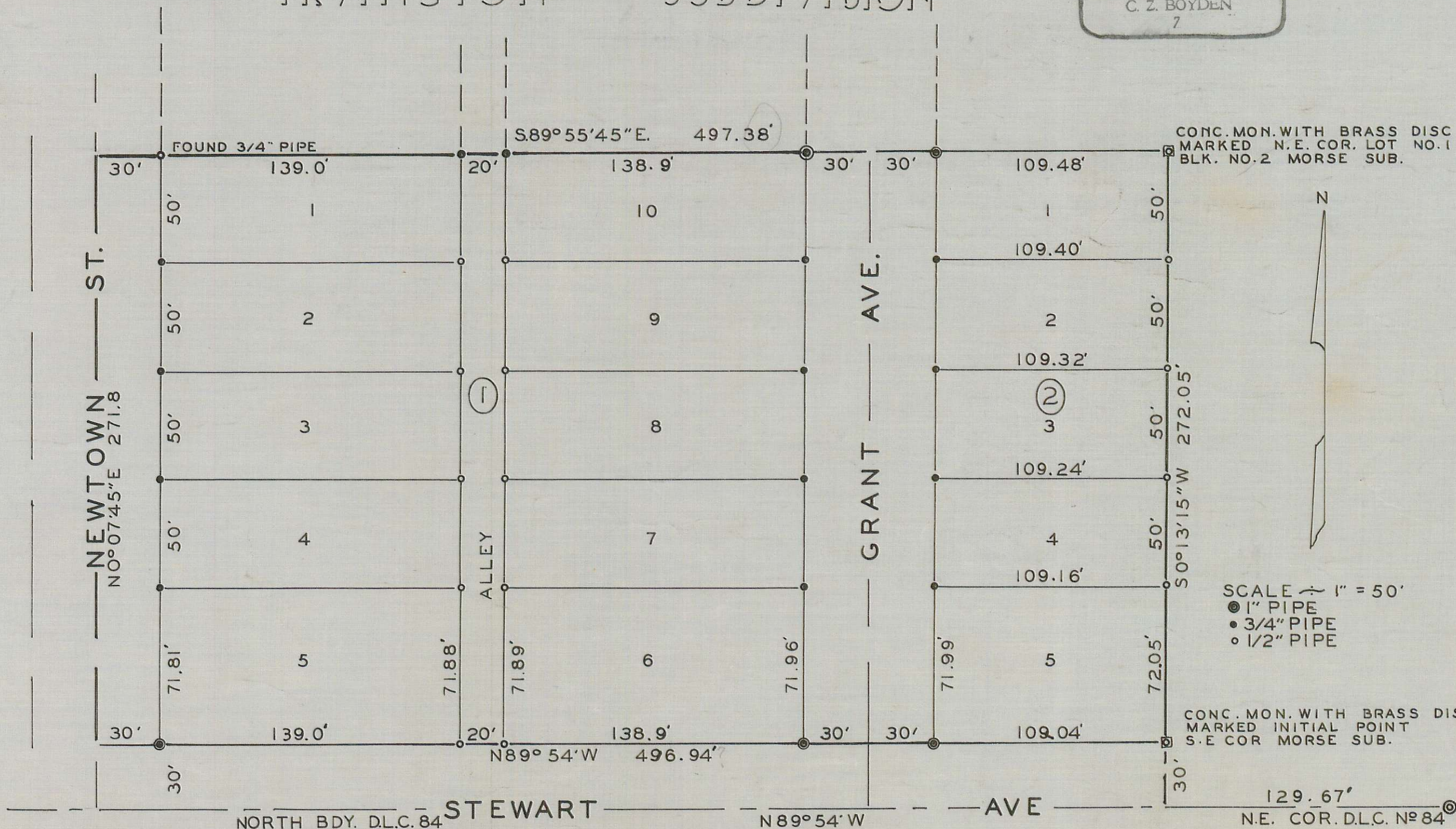
274025

FILED FOR RECORD THIS THE 12 DAY OF April 1949 AT 11:15 O'CLOCK a.m. AND RECORDED IN
6 VOLUME OF PLATS AT PAGE 53 OF RECORDS OF JACKSON COUNTY OREGON

J. Planter
COUNTY RECORDER



IRVINGTON SUBDIVISION



DEDICATION

KNOW ALL MEN BY THESE PRESENTS, THAT WE, ETHEL E. MC CARTER AND FRANK L. MC CARTER, WIFE AND HUSBAND, ARE THE OWNERS IN FEE SIMPLE OF THE LANDS HEREON DESCRIBED AND THAT WE HAVE SUBDIVIDED THE SAME INTO LOTS, BLOCKS, AND STREETS AS SHOWN HEREON AND THE NUMBER AND SIZE OF THE LOTS AND THE LENGTHS OF ALL LINES ARE PLAINLY SET FORTH AND THAT THIS PLAT IS A CORRECT REPRESENTATION OF THE SAID SUBDIVISION AND WE DO HEREBY DEDICATE TO THE PUBLIC FOR PUBLIC USE ALL STREETS AND ALLEYS AS SHOWN HEREON AND WE DO HEREBY DESIGNATE SAID SUBDIVISION AS MORSE SUBDIVISION.

IN WITNESS WHEREOF WE HAVE HEREUNTO SET OUR HANDS AND SEALS THIS

10th DAY OF November 1949

Ethel E. McCarter WITNESS
Frank L. McCarter WITNESS

STATE OF OREGON } ss
COUNTY OF JACKSON }

PERSONALLY CAME BEFORE ME A NOTARY PUBLIC IN AND FOR SAID COUNTY AND STATE THE ABOVE NAMED ETHEL E. MC CARTER AND FRANK L. MC CARTER, OF THE SAID COUNTY AND STATE TO ME PERSONALLY KNOWN TO BE THE ABOVE NAMED AND EXECUTED THE ABOVE INSTRUMENT AND WHO ACKNOWLEDGED TO ME THAT THEY DID THE SAME FREELY AND VOLUNTARILY.

DATED THIS 10th DAY OF November 1949

H. O. Martin
NOTARY PUBLIC FOR OREGON

MY COMMISSION EXPIRES THE 30th DAY OF March 1951

SURVEYOR'S CERTIFICATE

I, C.Z. BOYDEN, A DULY REGISTERED SURVEYOR OF THE STATE OF OREGON BEING FIRST DULY SWORN, DO HEREBY CERTIFY THAT I HAVE CORRECTLY SURVEYED AND MARKED WITH PROPER MONUMENTS THE TRACT OF LAND HEREON SHOWN AND THE SAID PLAT IS A CORRECT REPRESENTATION OF THE SURVEY MADE BY ME ON THE GROUND THAT I PLANTED A PROPER MONUMENT AS PROVIDED BY LAW, A 6" X 6" X 30" CONCRETE MONUMENT WITH A 2 1/2" BRASS DISC SET 6" BELOW THE SURFACE OF THE GROUND, INDICATING THE INITIAL POINT OF SAID SURVEY. THE FOLLOWING IS AN ACCURATE DESCRIPTION OF THE BOUNDARY LINES OF THE SUBDIVISION BEGINNING AT THE N.E. COR. D.L.C. NO. 84, BEING A COMMON CORNER WITH THE N.W. COR. NO. 85, TWP. 37 SOUTH, RANGE 2 WEST, WILLAMETTE MERIDIAN, JACKSON COUNTY, OREGON, THENCE N.89°54'W. ALONG THE NORTH BOUNDARY OF D.L.C. NO. 84, 129.67 FEET; THENCE N.0°13'15"E. 30.0 FEET TO THE INITIAL POINT OF MORSE SUBDIVISION; THENCE N.89°54'W. 496.94 FEET TO THE CENTER OF NEWTOWN STREET; THENCE N.0°07'45"E. ALONG THE CENTER LINE OF NEWTOWN STREET 271.8 FEET; THENCE S.89°55'45"E. 497.38 FEET THENCE S.0°13'15"W. 272.05 FEET TO THE INITIAL POINT.

SUBSCRIBED AND SWORN TO BEFORE ME THIS 7th DAY OF November 1949

Ann Pauline Jones
NOTARY PUBLIC FOR OREGON

MY COMMISSION EXPIRES THE 3rd DAY OF March 1950

I HEREBY CERTIFY THAT THIS TRACING IS AN EXACT COPY OF THE ORIGINAL PLAT FILED WITH THE COUNTY CLERK.

C. Z. Boyden