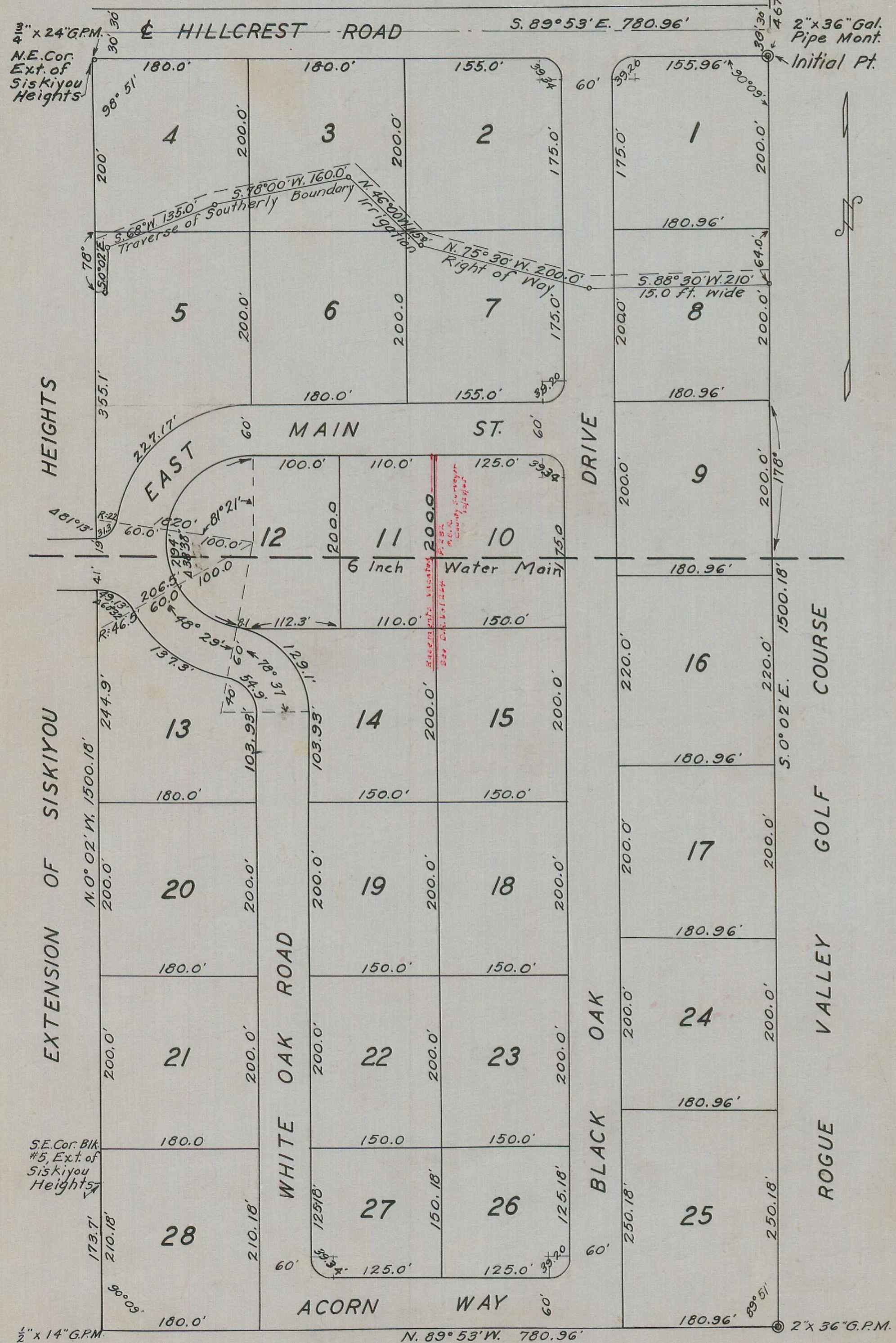


COUNTRY CLUB PARK

BEING PART OF SECTION 29, T.37S., R.1W., W.M.
Surveyed July 1928. by C.Z. Boyden Scale 1"=100'



DESCRIPTION

Beginning at a 2 inch by 36 inch galvanized pipe, set one half foot below the surface of the ground, which bears South 0° 02' East 467.0 feet along the section line from the corner common to sections 20, 21, 28 and 29 Township 37 South, Range 1 West, Willamette Meridian; thence South 0° 02' East, 1470.18 feet along the section line to a 2 inch by 36 inch galvanized pipe thence North 89° 53' West 780.96 feet; thence North 0° 02' West 1500.18 feet along the Easterly Boundary of the Extension of Siskiyou Heights; thence South 89° 53' East, 780.96 feet; thence South 0° 02' East 30.0 feet; to the point of beginning.

DEDICATION

Know all men by these presents, that we, Frank P. Farrell and his wife, Katherine Farrell, and Floyd H. Hart and his wife Leah Hart, of Jackson County, State of Oregon, are the owners in fee simple of the above described tract of land and that we have caused the same to be surveyed and subdivided into tracts and roads as shown hereon, and that the number and size of tracts and the lengths of all lines are plainly set forth, and that this plat is a correct representation of said subdivision; and that we do hereby dedicate to the public for public use, all roads shown hereon, also an easement for electric lines, telephone lines, water mains, sewers, gas mains and other like public utilities for ten feet in width along the east and west lines of said subd; and for five feet in width on each side of the north line of tracts numbered five (5), six (6), and seven (7), and five feet in width on each side of the west line of tracts numbered ten (10), fifteen (15), eighteen (18), twenty three (23) and twenty six (26) and that we do hereby designate said subdivision as Country Club Park.

In witness whereof we have hereunto set our hands and seals this 16th day of August 1928.

 Frank P. Farrell

 Katherine Farrell

 Floyd H. Hart

 Leah Hart

 Witness

 Witness

State of Oregon ss
 Jackson County ss
 On this 16th day of August 1928, _____ came personally before me a Notary Public, in and for said County and State, the above named _____ of said County and State, to me personally known to be the above named who executed the above instrument and who generally acknowledged to me that they did the same freely and voluntarily for the purpose herein mentioned.

Subscribed and sworn to before me the day and date above written.

 Notary Public of Oregon
 My Commission expires 8th day of September 1930.

SURVEYOR'S CERTIFICATE

I, C.Z. Boyden, hereby certify that I have duly surveyed the land shown on the accompanying plat and marked the corners with proper monuments in accordance with the Oregon laws.

 Surveyor

Subscribed and sworn to before me this 18th day of August 1928.

 Notary Public

My Commission expires March 1st 1932
 Examined and approved by the City of Medford Planning Commission in regular session this 28th day of June 1928.

 Secretary

Examined and recommended for approval of County Court. _____
 County Surveyor
 All taxes paid in full to date Sept 5th 1928. _____
 County Sheriff

Examined and approved this 7th day of September 1928. _____
 County Assessor
 For order of County Commissioners approving this plat see Volume 21 page 132 of Commissioners Journal of Proceedings. _____
 County Clerk

Filed for record this 7th day of Sept 1928 at 2:00 o'clock P.M., and recorded in Volume of Plats, Page 40 of Records of Jackson County, Oregon.

 County Recorder.

Note: Radius of all curves 25.0 ft. unless otherwise noted.