

# EAGLE POINT MEADOWS

EAGLE POINT, JACKSON COUNTY, OREGON.  
SCALE 400 FT = 1 IN.

### DESCRIPTION

This Subdivision Comprises the NE 1/4, the E 1/4 of the NW 1/4 and Lots 1, 2, 3 in Section 34, Lot no. 4 in Sec 35 and a part of D.L.C. No. 40 in Sec. 34, all in T. 35 S. R. 1W. W.M. and is described as follows: Beginning at the N.W. corner of D.L.C. 40 Sec. 34 T. 35 S. R. 1W. W.M. a 4" Brass capped pipe monument, running thence S89°59'W 88 1/2 feet thence N 0°03'W 280 1/2 feet to the 1/4 cor. on the Section Line bet. Secs. 34 and 27 T. 35 S. R. 1W. W.M. running thence N89°59'E 1333 2/3 feet to the 1/4 corner bet. Secs. 34 and 27, thence N89°59'E 2666 2/3 feet to the Sec. Corner Common to Secs. 26-27-34-35 T. 35 S. R. 1W. W.M. marked with a 1" gas pipe monument, thence S0°06'W 2649 2/3 feet to the 1/4 cor. bet. Secs. 34 and 35, a 1" gas pipe monument, thence S89°59'E 1325 2/3 feet, thence S0°03'W 159 2/3 feet to a point on the north line of D.L.C. 40, from which the N.E. cor. of D.L.C. 40 bears S89°54'E 30 feet, thence N89°54'W 3957 2/3 feet, thence S0°01'E 1936 2/3 feet, thence N89°54'W 1325 2/3 feet to a point on the West Side Line of D.L.C. 40 from which the S.W. cor. of D.L.C. 40 bears S0°08'E 734 2/3 feet, thence N0°08'W 1936 2/3 feet to the place of beginning.

### DEDICATION

Know all men by these presents that the Eagle Point Irrigation District, a Corporation, and I. L. Bradshaw are the Owners in fee Simple of the above described tract and that we have subdivided the same into lots and streets as shown hereon; and the number and size of the lots and the length of all lines are plainly set forth and that this plat is a correct representation of said Subdivision. We do hereby dedicate to the Public for Public use all streets shown hereon, and we do hereby designate said Subdivision as EAGLE POINT MEADOWS.

In Witness whereof We have hereunto set our hands and Seal this 1st day of September 1927

Eagle Point Irrigation District  
By I. L. Bradshaw President  
By J. M. Spencer Secretary

STATE OF OREGON 55  
COUNTY OF JACKSON

Personally came before me, a Notary Public in and for said County and State the above named Corporation, thro its President and Secretary and the above named individual, to me personally known to be the above named and executed the above instrument and who acknowledged to me they did the same freely and voluntarily. Done this 1st day of Sept. 1927

I. L. Bradshaw  
Notary Public for State of Oregon  
My Commission Expires Oct. 27, 1930.

### SURVEYORS CERTIFICATE

I hereby certify that this Map was made from notes taken during an actual survey in the field and that this plat is a correct representation of said survey.

A. P. Powell  
SURVEYOR

Subscribed and Sworn to before me this 1st day of Sept. 1927

I. L. Bradshaw  
Notary Public for State of Oregon  
My Commission Expires Oct. 27, 1930.

I, J. M. Spencer, hereby certify that I have set the corners and monuments as herein designated.

J. M. Spencer

Subscribed and Sworn to before me this 1st day of Sept. 1927

I. L. Bradshaw  
Notary Public for State of Oregon  
My Commission Expires Oct. 27, 1930.

Examined and recommended for approval of County Court.

Paul B. Running  
County Surveyor by C. Boyden

All Taxes paid in full to date Sept-3- 1927

Ralph G. Jennings  
County Sheriff

Examined and approved this 2 day of September 1927

J. B. Chumace  
County Assessor

For Order of County Commissioners approving this Plat See Vol. 20 Page 592 of Commissioners Journal of Proceedings

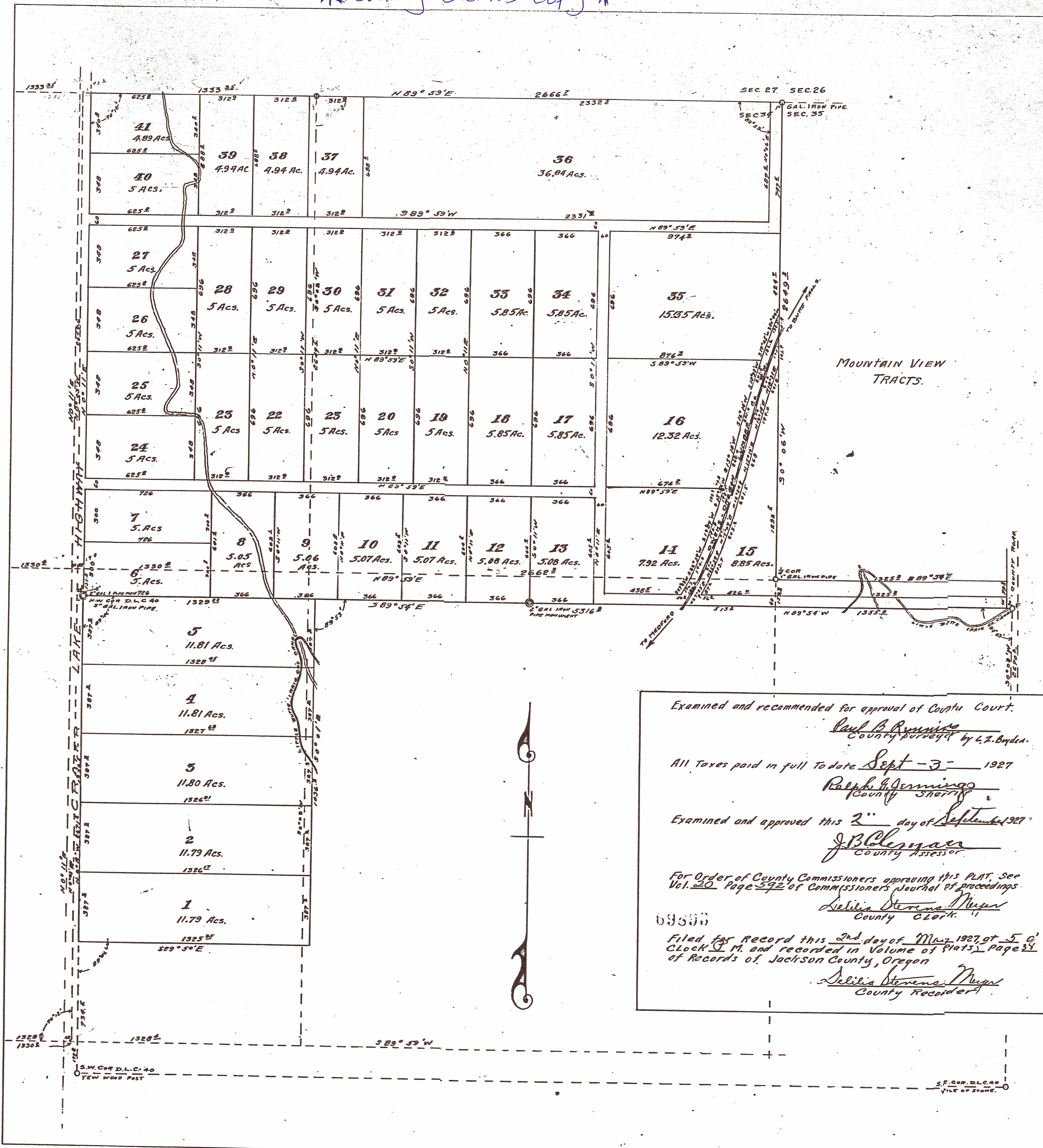
Delicia Stevens Meyer  
County Clerk.

49893

Filed for Record this 3rd day of May 1927, at 5 0' Clock P. M. and recorded in Volume of Plats 5 Page 33 of Records of Jackson County, Oregon

Delicia Stevens Meyer  
County Recorder

\* County Clerk's Copy \*



# EAGLE POINT MEADOWS

EAGLE POINT, JACKSON COUNTY, OREGON.  
SCALE 400 FT = 1 IN.

### DESCRIPTION

This Subdivision Comprises the NE 1/4, the E 1/2 of the NW 1/4 and Lots 1, 2, 3 in Section 34 Lot no 4 in Sec 35 and a Part of D.L.C. No. 40 in Sect. 34 all in T. 35 S. R. 1 W. W.M. and is described as follows; Beginning at the N.W. corner of D.L.C. 40 Sec. 34 T. 35 S. R. 1 W. W.M. a 4" Brass capped pipe monument, running thence S 89° 59' W. 280 1/2 feet, thence N 0° 03' W. 200 1/2 feet to the 1/4 cor. on the section line bet. Sects. 34 and 27 T. 35 S. R. 1 W. W.M. along thence N 89° 59' E. 1335 1/2 feet to the 1/4 Corner bet. Sects. 34 and 27 thence N 89° 59' E. 2662 feet to the 1/4 Corner Common to Sects. 26-27-34-35 T. 35 S. R. 1 W. W.M. marked with a 1" gas pipe monument, thence S 0° 06' W. 2449 1/2 feet, thence S 89° 59' W. 159 1/2 feet to a point on the North Line of D.L.C. 40 from which the N.E. cor of D.L.C. 40 bears S 89° 54' E. 503 1/2 feet, thence N 89° 54' W. 3957 1/2 feet, thence S 0° 01' E. 1936 feet thence N 89° 54' W. 1325 1/2 feet to point on the West Side Line of D.L.C. 40 from which the S.W. cor of D.L.C. 40 bears S 0° 08' E. 734 feet, thence N 0° 08' W. 1936 1/2 feet to the place of beginning.

### DEDICATION

Know all men by these presents that the Eagle Point Irrigation District, a Corporation, and J. L. Bradshaw are the Owners in fee Simple of the above described tract and that we have subdivided the same into lots and streets, as shown hereon, and the number and size of the lots and the length of all lines are plainly set forth and that this plat is a correct representation of said subdivision. We do hereby dedicate to the Public for Public Use all Streets shown hereon, and we hereby designate said subdivision as EAGLE POINT MEADOWS.

In Witness whereof We have hereunto set our hands and Seal this 1st day of September 1927

Eagle Point Irrigation District

By J.M. Spencer Secretary  
 Witness: \_\_\_\_\_  
 Witness: \_\_\_\_\_

STATE OF OREGON 55  
COUNTY OF JACKSON

Personally came before me a Notary Public in and for the County and State the above named Corporation, thro its President and Secretary and the above named individual, to me personally known to be the above named and executed the above instrument and who acknowledged to me they did the same freely and voluntarily. Done this 1st day of Sept. 1927

By J. B. Clemens  
 Notary Public for State of Oregon  
 My commission expires Oct. 27, 1930

### SURVEYORS CERTIFICATE

I hereby certify that this Map was made from notes taken during an actual survey in the field and that this plat is a correct representation of said survey.

By J. B. Clemens  
 Surveyor

Subscribed and Sworn to before me this 1st day of Sept. 1927

By J.M. Spencer  
 Notary Public  
 My Commission Expires Oct. 27, 1930

I, J.M. Spencer, hereby certify that I have set the corners and monuments as herein designated.

By J.M. Spencer  
 Notary Public  
 My Commission Expires Oct. 27, 1930

Examined and recommended for approval of County Court.  
Paul B. Reynolds  
 County Surveyor by L.F. Boyden.

All Taxes paid in full to date Sept - 3 - 1927  
Ralph A. Verming  
 County Sheriff

Examined and approved this 2nd day of September 1927  
J. B. Clemens  
 County Assessor

For Order of County Commissioners approving this PLAT, See Vol. 20 Page 592 of Commissioners Journal of proceedings

69356  
Delicia Stevens Munn  
 County Clerk

Filed for Record this 2nd day of May 1927, at 5 o'Clock P. M. and recorded in Volume of Plats, Page 34 of Records of Jackson County, Oregon

Delicia Stevens Munn  
 County Recorder