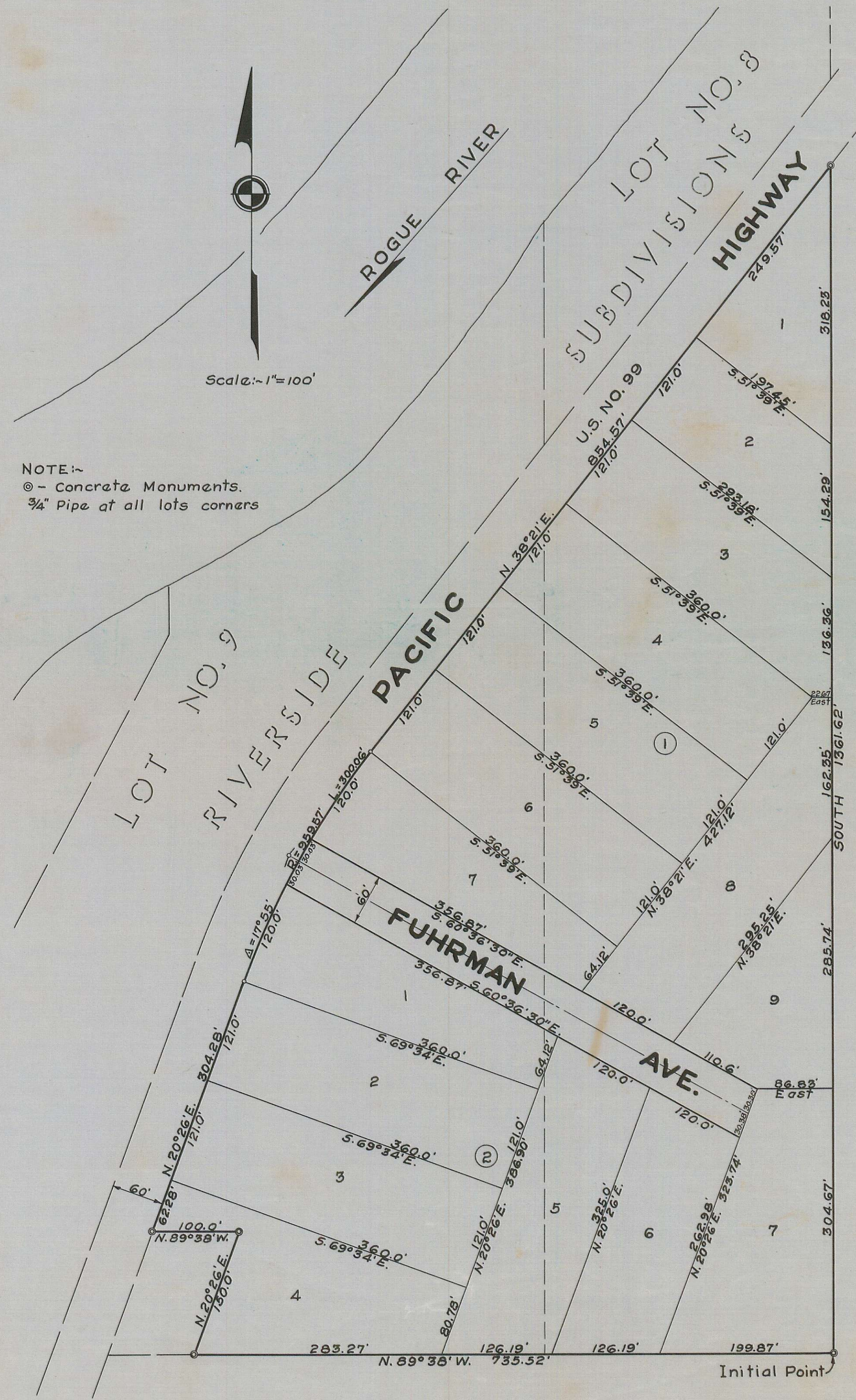


BOLT'S MOUNTAIN VIEW SUBDIVISION



NOTE:-
 © - Concrete Monuments.
 3/4" Pipe at all lots corners

DEDICATION

KNOW ALL MEN BY THESE PRESENTS, That we, Edward Bolt and Eleanor S. Bolt, are the owners in fee simple of the lands hereon described, and that we have subdivided the same into lots, blocks and streets as shown hereon, and the number and size of the lots and lengths of all lines are plainly set forth, and that this plat is a correct representation of the said subdivision, and we do hereby dedicate to the public for public use all streets shown hereon, and we do hereby designate said subdivision as, Bolt's Mountain View Subdivision.

IN WITNESS WHEREOF we have hereunto set our hands and seals this 19th day of May, 1948.

Norman Spencer Witness Edward Bolt
Edna A. Ferguson Witness Eleanor S. Bolt

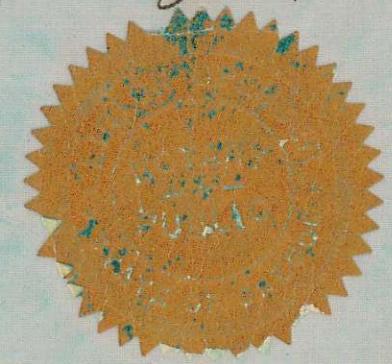
STATE OF OREGON } ss.
 County of Jackson }

Personally came before me, a notary public in and for said County and State, the above named, Edward Bolt and Eleanor S. Bolt, of said County and State, to me personally known to be the above named, and executed the above instrument and who acknowledged to me that they did the same freely and voluntarily.

Dated this 19th day of May, 1948.

Robert Spencer
 Notary Public for Oregon

My Commission expires the 3rd day of January, 1949



Examined and approved this 20 day of May, 1948.
W. Myer
 County Assessor

All taxes paid in full to date this the 24 day of May, 1948.
Howard Gault
 County Sheriff

244910

Filed for record this the 3 day of June, 1948, at 11 o'clock A.M. and recorded in 6 Volume of plats at page 38 of records of Jackson County, Oregon.

W. L. Carter
 County Recorder

Basis of Bearings:-
 Bearings are taken from Amended Plat of the Riverside Subdivisions filed with County Clerk.

ENGINEER'S CERTIFICATE

STATE OF OREGON } ss.
 County of Jackson }

I, a duly registered engineer of the State of Oregon, being first duly sworn, do hereby certify that I have correctly surveyed and marked with proper monuments the tract of land hereon shown and the said plat is a correct representation of the survey made by me on the ground; that I planted a proper monument as provided by law, a concrete monument set six inches below the surface of the ground, indicating the Initial Point of said survey, and the following is an accurate description of the boundary lines of the subdivision; Beginning at a concrete monument which bears South 2335.26 feet and West 2590.59 feet from the 1/4 Section Corner Common to Sections 24, Township 36 South, Range 4 West and Section 19, Township 36 South, Range 3 West of the Willamette Meridian, Jackson County, Oregon; Thence North 89°38' West 735.52 feet to a concrete monument; Thence North 20°26' East 150.00 feet to a concrete monument; Thence North 89°38' West 100.00 feet to intersect the southerly line of the Pacific Highway No. 99 at a concrete monument; Thence along the said highway line North 20°26' East 304.28 feet; Thence along the arc of a 959.57 foot radius curve to the right 300.06 feet (the long chord which bears North 29°23'30" East 298.85 feet); Thence North 38°21' East 854.57 feet to a concrete monument; Thence South 1361.62 feet to the point of beginning.

Being that portion of Lots 8 & 9 of the Amended Plat of the Riverside Subdivisions lying southeasterly of the Pacific Highway No. 99.

J. H. Clabby
 Engineer

Subscribed and sworn to before me this 19th day of May, 1948.

Robert Spencer
 Notary Public for Oregon

My Commission expires the 3rd day of January, 1949.

Examined and recommended for the County Court.

Paul D. Rejman
 County Surveyor

For order of the County Court approving this plat see Volume 32, Page 323, of County Commissioners' Journal of Proceedings.

W. L. Carter
 County Clerk

I hereby certify that this tracing is an exact copy of the original plat filed with the County Clerk.

J. H. Clabby
 Engineer

