

# VALLEY CENTER SUBDIVISION DEDICATION

# ENGINEER'S CERTIFICATE

KNOW ALL MEN BY THESE PRESENTS, That we, Henry B. Connell and Gladys Connell, are the owners in fee simple of the lands hereon described, and that we have subdivided the same into lots, blocks and streets as shown hereon, and the number and size of the lots and lengths of all lines are plainly set forth, and that this plat is a correct representation of the said subdivision, and we do hereby dedicate to the public for public use all streets shown hereon, and we do hereby designate said subdivision as, VALLEY CENTER SUBDIVISION.

IN WITNESS WHEREOF we have hereunto set our hands and seals this 8th day of January, 1948.

Afton Carter Witness Henry B. Connell  
Mydah Weil Witness Gladys Connell

STATE OF OREGON } ss.  
COUNTY OF JACKSON }

Personally came before me, a notary public in and for said County and State, the above named Henry B. Connell and Gladys Connell of said County and State, to me personally known to be the above named, and executed the above instrument and who acknowledged to me that they did the same freely and voluntarily.

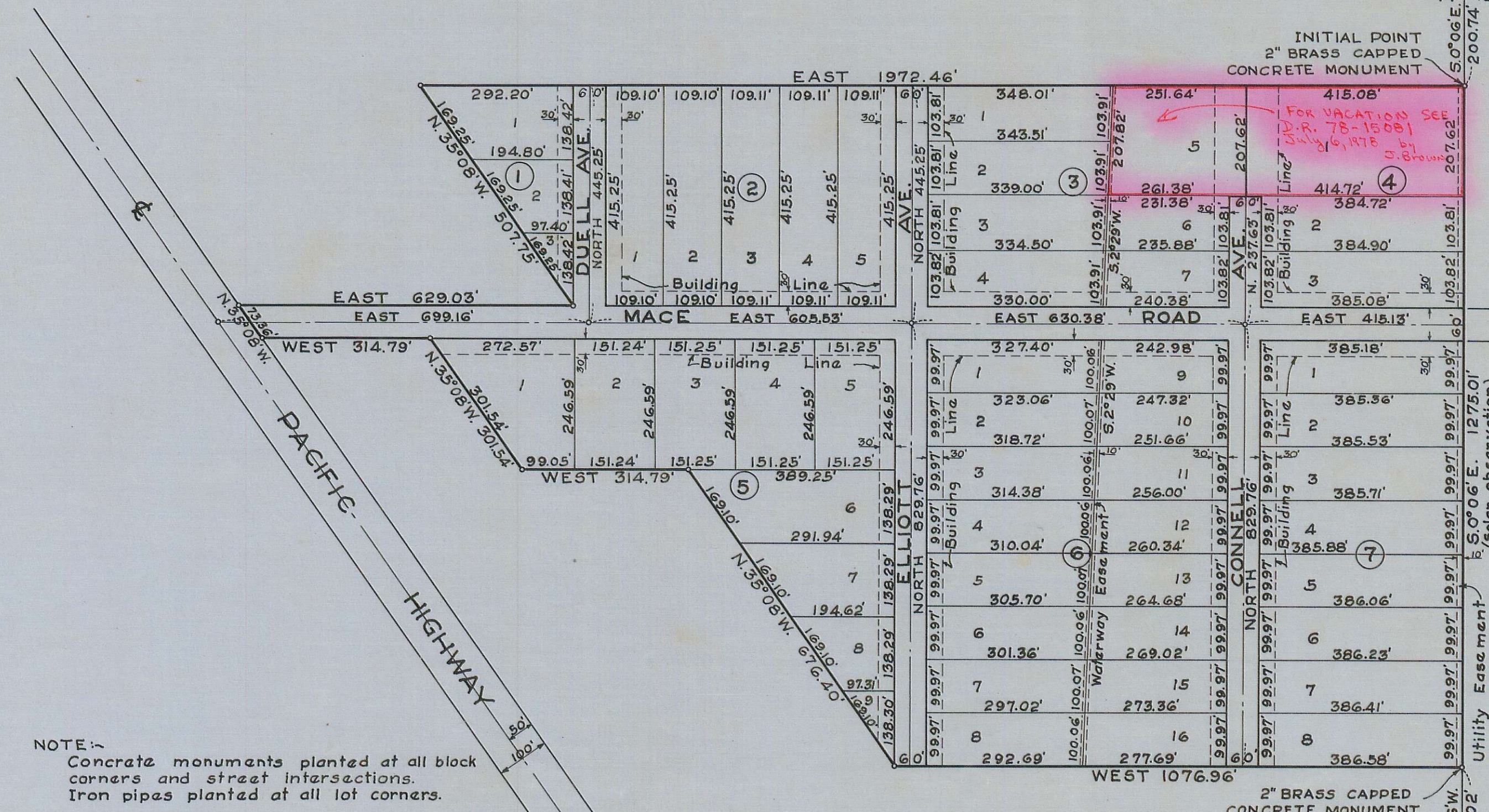
Dated this 8th day of January, 1948.

Mydah Weil  
Notary Public for Oregon

My Commission expires the 28th day of November, 1948



Scale: - 1" = 200'



NOTE:-  
Concrete monuments planted at all block corners and street intersections.  
Iron pipes planted at all lot corners.

I hereby certify that this tracing is an exact copy of the original plat filed with the County Clerk.

J. H. Clabby  
Engineer

STATE OF OREGON } ss.  
COUNTY OF JACKSON }

I, a duly registered engineer of the State of Oregon, being first duly sworn, do hereby certify that I have correctly surveyed and marked with proper monuments the tract of land hereon shown and the said plat is a correct representation of the survey made by me on the ground; that I planted a proper monument as provided by law, a two-inch brass capped concrete monument set six inches below the surface of the ground, indicating the initial point of said survey, and the following is an accurate description of the boundary lines of the subdivision;

Beginning at a 2" brass capped concrete monument on the section line between Sections 13 and 14, Township 37 South, Range 2 West of the Willamette Meridian, Jackson County, Oregon said point bears South 0° 06' East 200.74 feet from the section corner common to Sections 11, 12, 13 and 14; Thence South 0° 06' East 1275.01 feet along said section line to a 2" brass capped concrete monument; Thence West 1076.96 feet; Thence North 35° 08' West 676.40 feet; Thence West 314.79 feet; Thence North 35° 08' West 301.54 feet; Thence West 314.79 feet to the easterly right-of-way line of the Pacific Highway No. 99; Thence along said right-of-way line North 35° 08' West 73.36 feet; Thence East 629.03 feet; Thence North 35° 08' West 507.75 feet; Thence East 1972.46 feet to the point of beginning.

J. H. Clabby  
Engineer

Subscribed and sworn to before me this 27th day of December, 1947

Calvin Spencer  
Notary Public for Oregon

My commission expires the 3rd day of January, 1949.

Examined and approved by the City of Madford Planning Commission in regular session this the 22nd day of December, 1947.

Attest: James Ford Secretary J. H. Clabby President

Examined and approved this 2nd day of January, 1948.

Amelia  
County Assessor

All taxes paid in full to date this the 7th day of January, 1948.

Howard Smith  
County Sheriff

Examined and recommended for approval of the County Court.

Paul B. Rynning  
County Surveyor

For order of the County Court approving this plat see Volume 33, Page 472, of County Commissioners' Journal of Proceedings.

W. Plante  
County Clerk

Filed for record this the 8th day of Jan, 1948, at five o'clock P. M. and recorded in 6 Volume of plats at page 33 of records of Jackson County, Oregon.

W. Plante  
County Recorder

