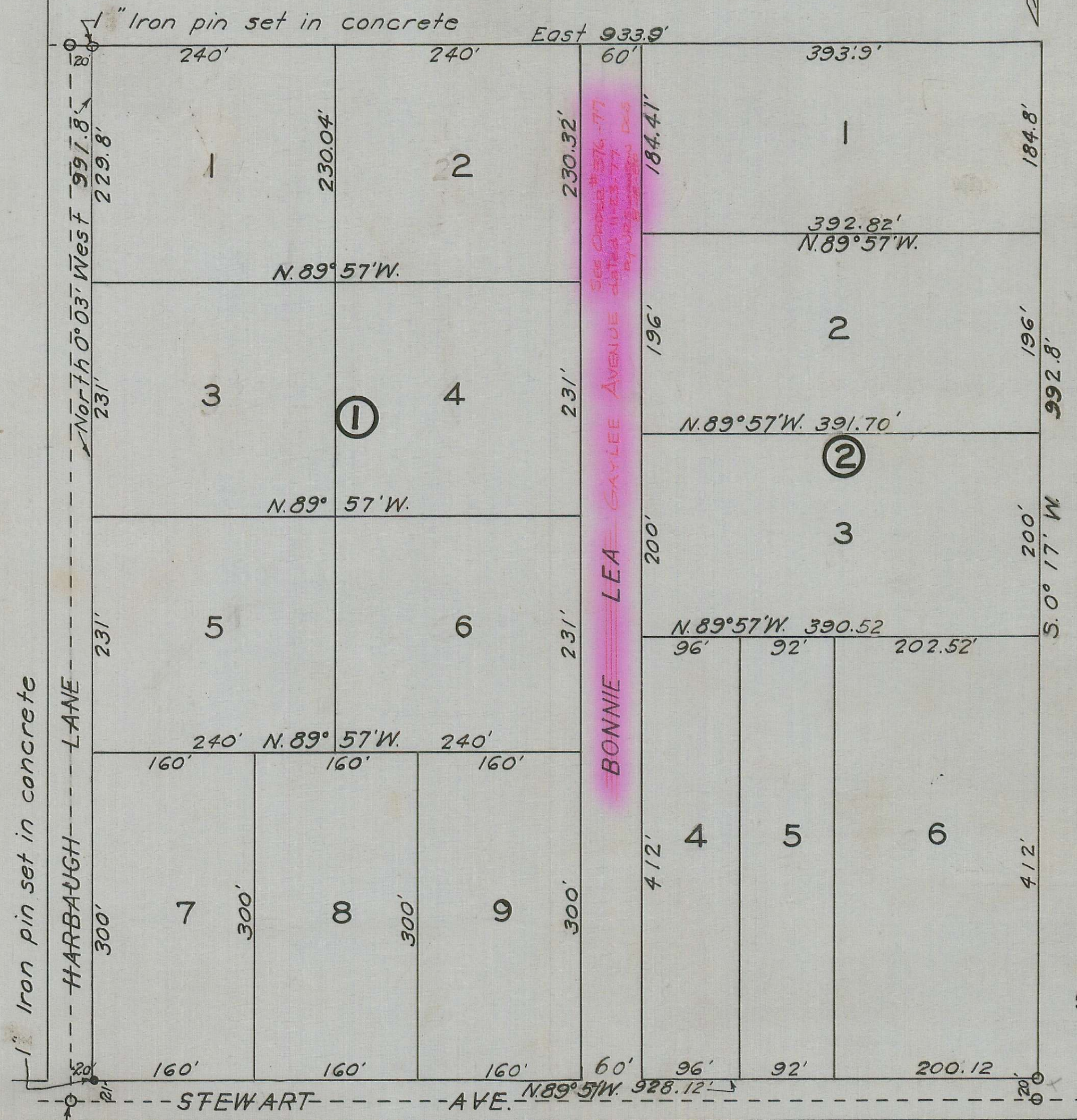


HILES LARK MEADOWS SUBDIVISION

MAY, 1926. H.D. POWELL CIVIL ENGR.

SCALE: 100 FEET TO 1 INCH.



S.W. Corner D.L.C. 77
 T. 37S., R. 2W., W.M.
 Initial Point



Plotted

DESCRIPTION

Beginning at a 1 inch pin set in a block of concrete 12 inches by 12 inches by 18 inches the center of which pin is 21 feet North and 20 feet East from the South West Corner of Donation Land Claim #77 in Township 37 South of Range 2 West of the Willamette Meridian in Jackson County, Oregon, and from said pin running thence North 0° 03' West 991.8 feet; to a 1 inch pin set in a block of concrete 12 inches by 12 inches by 18 inches thence East 933.9 feet; thence South 0° 17' West 992.8 feet; thence N. 89° 57' W. 928.12 feet to the place of beginning.

DEDICATION

Know all men by these presents, that we, Albert Hiles and Annie M. Hiles, his wife are the owners in fee simple of the above described tract and that we have subdivided the same into lots and streets as shown hereon, and the number and size of the lots and the length of all lines are plainly set forth, and that this plat is a correct representation of said subdivision, we do hereby dedicate to the public for public use all streets and alleys shown hereon; and we do hereby designate said subdivision, as Hiles Lark Meadows Subdivision. In Witness whereof we have hereunto set our hands and seals this 12 day of June 1926.

L. B. Cameron
 Notary Public

Albert Hiles Seal
Annie M. Hiles Seal

Wm. M. Holmes
 Witnesses

State of Oregon
 County of Jackson S.S.

Personally came before me a Notary Public in and for said County and State, the above named Albert Hiles and Annie M. Hiles of said State and County, to me personally known to be the above named and executed the above instrument and who acknowledged to me that they did the same freely and voluntarily. Done this 12 day of June, 1926.

My Commission expires January 7 1927

SURVEYOR'S CERTIFICATE

I, H.D. Powell, hereby certify that this map was made from notes taken during an actual survey in the field and that this map is a correct representation of said survey, and that I have set the corners as hereon designated. H.D. Powell
 Subscribed and sworn to before me this 14 day of June, 1926.

J. W. Macfarland
 Notary Public

My Commission expires June 16 1927

Examined and recommended for approval of County Court.

All taxes paid in full to date June 24 1926.

Examined and approved this 24 day of June 1926.

For order of County Commissioners approving this plat, see Volume 20 Page 130-1 of Commissioners Journal of Proceedings.

57966
 Filed for record this 30 day of June, 1926, at 4:00 o'clock P.M., and recorded in 5 volume of Plats, Page 28 of Records of Jackson County, Oregon.

Examined and approved by the City of Medford Planning Commission, in regular session, this 15 day of June, 1926.

H. D. Powell
 Secretary

Levis Ulrich
 President