

DESCRIPTION

Commencing at a 3/4 inch pipe set in a block of concrete 12 inches by 12 inches by 18 inches the center of which pipe bears South 500.5 feet and East 1573.1 feet, from the Northeast corner of Donation Land Claim #44 in Township 37 South of Range West of Willamette Meridian in Jackson County, Oregon, and running thence East 664.0 feet to a 3/4 inch iron pipe set in a block of concrete 12 inches by 12 inches by 18 inches thence North 602.0 feet to a 3/4 inch iron pipe thence West 664.0 feet to a 3/4 inch iron pipe, said pipe being also 60 feet East of block 4, Siskiyou Heights Addition to the City of Medford, Oregon, thence South 602.0 feet to the place of beginning, being also known as block 1, of the Extension to Siskiyou Heights Addition to the City of Medford, Oregon.

DEDICATION

Know all these men by these presents, that we, Joseph H. Sattler and Carrie Sattler, are the owners in Fee simple of the above described tract, and that we have subdivided the same into lots, blocks and streets as shown hereon, and the number and size of the lots and the length of all lines are plainly set forth and that this plat is a correct representation of said subdivision, and we do hereby dedicate to the Public for public use the street shown hereon, and we do hereby designate said subdivision as Glen Oak Subdivision of Block 1, Siskiyou Heights Extension. In Witness Whereof, we have hereunto set our hands and seals by our Attorney in fact.

Natalie Hamilton
Joseph H. Sattler (Seal)
Carrie Sattler (Seal)
Witnesses.
By L.R. Sattler (Seal)
Attorney in fact.

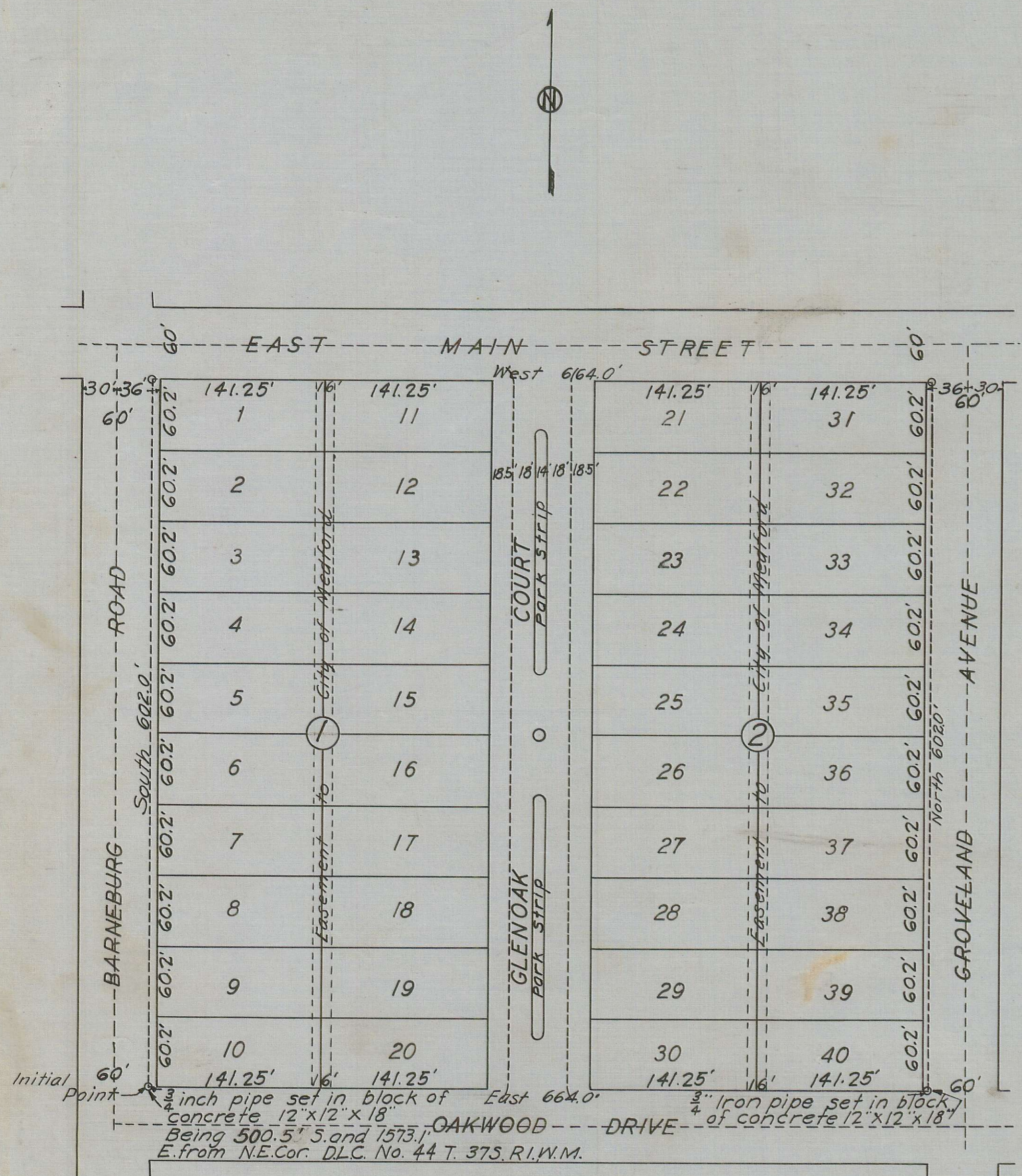
State of Oregon } s.s.
County of Jackson }
Personally came before me a Notary Public in and for said County and State, the above named L. R. Sattler attorney in fact, of said State and County to me personally known to be the above named and executed the above instrument, and who acknowledged to me that they did the same freely and voluntarily. Done this 28th day of April 1926.
My Commission expires Dec. 6, 1927.
J.W. Wakefield
Notary Public

SURVEYOR'S CERTIFICATE

I, H.D. Powell, hereby certify that this map was made from notes taken during an actual survey in the field, and that this map is a correct representation of said survey, and that I have set the corners as hereon designated. H.D. Powell
Subscribed and sworn to before me this 28th day of April 1926.

My Commission expires Dec 6, 1927
Examined and recommended for approval of County Court.
All Taxes paid in full to date May 5 1926.
Examined and approved this 4th day of May 1926
For order of County Commissioners approving this plat, see volume 20 Page 99 of Commissioners Journal of Proceedings 57090
Filed for record this 6 day of May 1926, at 1:20 o'clock P.M. and recorded in 5 volume of plats, page 26 of records of Jackson County, Oregon.
Delilia Stevens
County Clerk

Examined and approved by the Council of the City of Medford, in regular session, this 6 day of April, 1926.
Attest
City Recorder
Examined and approved by the City of Medford Planning Commission, in regular session, this 12 day of April, 1926.
Attest
Secretary
President.



GLEN OAK SUBDIVISION
OF BLOCK I, SISKIYOU HEIGHTS EXTENSION.

APRIL 1926. H.D. POWELL CIVIL ENG'R.
SCALE: 80 FEET TO 1 INCH.

