

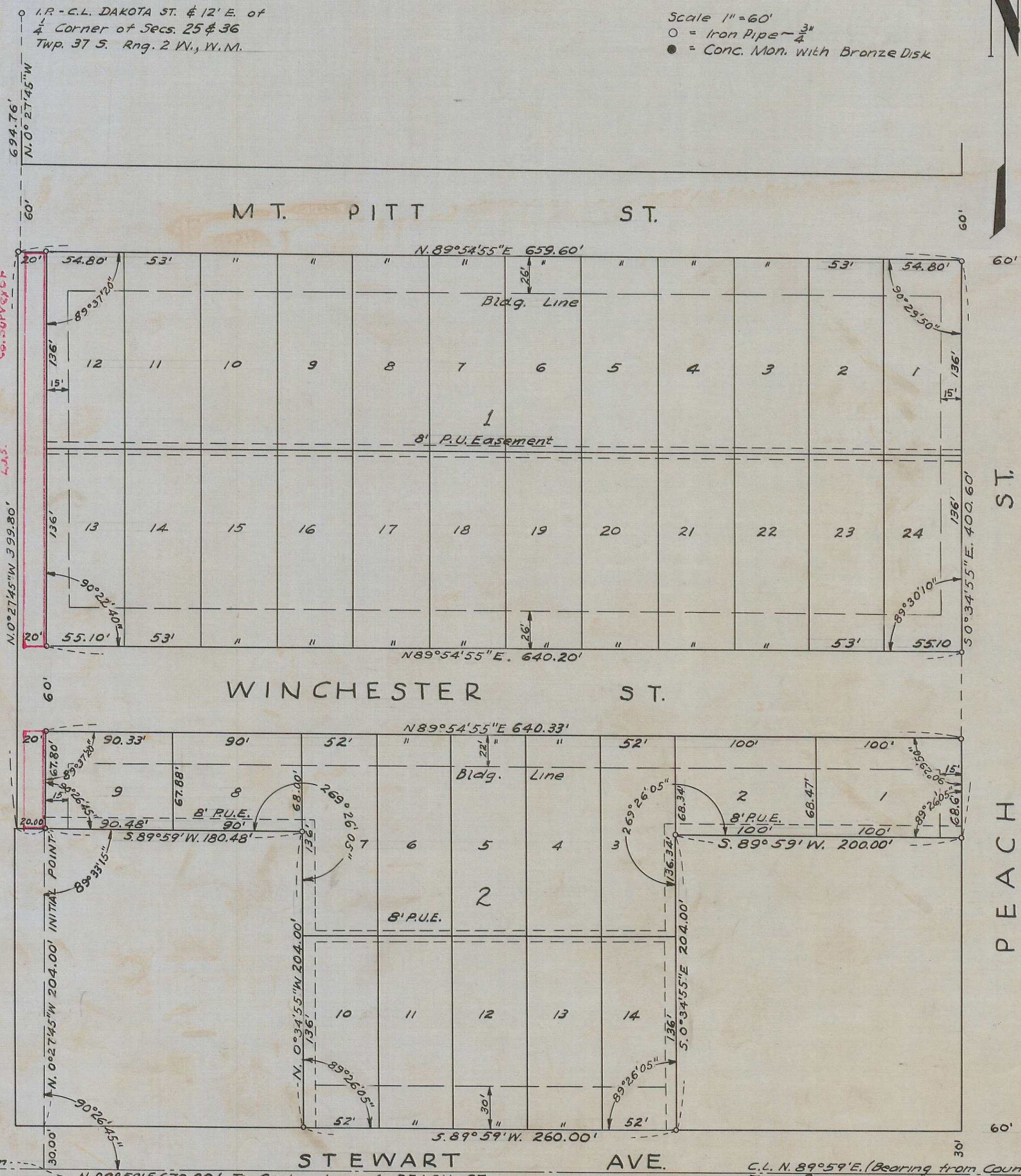
EDMUNDS ADDITION TO THE CITY OF MEDFORD



Scale 1" = 60'
 ○ = Iron Pipe $\frac{3}{4}$ "
 ● = Conc. Mon. with Bronze Disk

1/4 - C.L. DAKOTA ST. & 12' E. of
 1/4 Corner of Secs. 25 & 36
 Twp. 37 S. Rng. 2 W., W.M.

For Street Vacation
 549 D.R. Vol. 410 - P. 78
 6/1/55
 C.S. Surveyor



DESCRIPTION

COMMENCING AT THE N.W. CORNER OF D.L.C. NO. 84 SECTION 36, T. 37 S., R. 2 W. W.M. JACKSON COUNTY, OREGON. THENCE N. 89° 59' E. 658.95 FT. ALONG THE C.L. OF STEWART AVE. THENCE N 0° 27' 45" W. 234.00 FT. FOR A TRUE INITIAL POINT. THENCE S. 89° 59' W. 20.00 FT. THENCE N 0° 27' 45" W. 399.80 FT. MORE OR LESS TO THE SOUTH LINE OF MT. PITT ST. THENCE N 89° 54' 55" E. 659.60 FT. TO THE WEST LINE OF PEACH ST. THENCE S 0° 34' 55" E. 400.60 FT. THENCE S. 89° 59' W. 200.00 FT. THENCE S 0° 34' 55" E. 204.00 FT. THENCE S. 89° 59' W. 260.00 FT. THENCE N 0° 34' 55" W. 204.00 FT. THENCE S. 89° 59' W. 180.48 FT. TO THE INITIAL POINT.

DEDICATION

KNOW ALL MEN BY THESE PRESENTS THAT WE, H.L. AND HENRIETTA EDMUNDS ARE THE OWNERS OF THE ABOVE DESCRIBED LAND, THAT THE SAME HAS BEEN LAID OUT IN LOTS, BLOCKS, STREETS AND ALLEYS AS SHOWN ON THE MAP HEREON, AND THAT THE SAID MAP IS A CORRECT REPRESENTATION OF SAID SURVEY AND SUBDIVISION AND WE DO HEREBY DEDICATE TO THE PUBLIC FOR PUBLIC HIGHWAYS ALL THE STREETS AND ALLEYS SHOWN ON SAID TRACT AND DO HEREBY DESIGNATE AND NAME THE SAID TRACT AS SHOWN HEREON AS **EDMUNDS ADDITION** TO THE CITY OF MEDFORD, STATE OF OREGON

IN WITNESS WHEREOF
 Elizabeth C. Lyda
 Elizabeth E. Miller

SIGNED
 H.L. Edmunds
 Henrietta Edmunds

PERSONALLY APPEARED BEFORE ME, A NOTARY PUBLIC IN AND FOR THE STATE OF OREGON, THE WITHIN NAMED H.L. AND HENRIETTA EDMUNDS TO ME KNOWN TO BE THE ABOVE NAMED AND WHO EXECUTED THE ABOVE AND ACKNOWLEDGED TO ME THAT THEY EXECUTED THE SAME VOLUNTARILY FOR THE PURPOSE HEREIN MENTIONED.

NOTARY PUBLIC FOR OREGON
 COMMISSION EXPIRES AUG. 9, 1949

William N. Ekblad
 NOTARY PUBLIC

I, A DULY REGISTERED ENGINEER OF THE STATE OF OREGON, BEING FIRST DULY SWORN, DO HEREBY CERTIFY THAT I HAVE CORRECTLY SURVEYED AND MARKED WITH PROPER MONUMENTS THE TRACT OF LAND HEREON SHOWN AND GUARANTEE THE SAID PLAT IS A CORRECT REPRESENTATION OF THE SURVEY MADE BY ME ON THE GROUND; THAT I PLANTED A PROPER MONUMENT AS PROVIDED BY LAW, A 6 1/2" x 6 1/2" x 18" CONCRETE BLOCK WITH A BRONZE DISC IN THE TOP INSCRIBED, INITIAL POINT, EDMUNDS ADDITION, SET FLUSH WITH THE SURFACE OF THE GROUND, INDICATING THE INITIAL POINT OF SAID SURVEY, AND THE PRECEDING IS AN ACCURATE DESCRIPTION OF THE BOUNDARY LINES OF THE SUBDIVISION.

J. H. Clardy
 ENGINEER

SUBSCRIBED AND SWORN TO BEFORE ME THIS 23rd DAY OF August, 1946.

Carly J. Teeguwaad
 NOTARY PUBLIC

EXAMINED AND APPROVED BY ME THIS 21st DAY OF Aug. 1946.

Vernon Shorpe
 CITY ENGINEER

EXAMINED AND APPROVED BY THE MEDFORD CITY PLANNING COMMISSION IN REGULAR SESSION THIS 12th DAY OF April 1946.

W. Woodruff
 SECRETARY

J. H. Riegel
 PRESIDENT

EXAMINED AND APPROVED BY ME THIS 27th DAY OF Aug. 1946.

Howard Meador
 COUNTY ASSESSOR

ALL TAXES PAID IN FULL TO THIS DATE 27th DAY OF Aug. 1946.

Howard Meador
 COUNTY SHERIFF

FOR ORDER OF COUNTY COMMISSIONERS APPROVING THIS PLAT SEE PAGE 33 VOL. 1 OF THE COMMISSIONERS JOURNAL OF PROCEEDINGS.

216728

H. Plante
 CLERK OF JACKSON COUNTY

FILED FOR RECORD THIS 20 DAY OF April 1946 AND RECORDED ON PAGE 22 VOL. 6 OF PLATS.

H. Plante
 COUNTY RECORDER

N. 89° 59' E. 658.95' from N.W. Cor. D.L.C. 84
 - N. 89° 59' E. 670.90' To Center Line of PEACH ST.
 C.L. N. 89° 59' E. (Bearing from County Road Map)
 True Bearing by County Solar Observation is N. 89° 54' E.