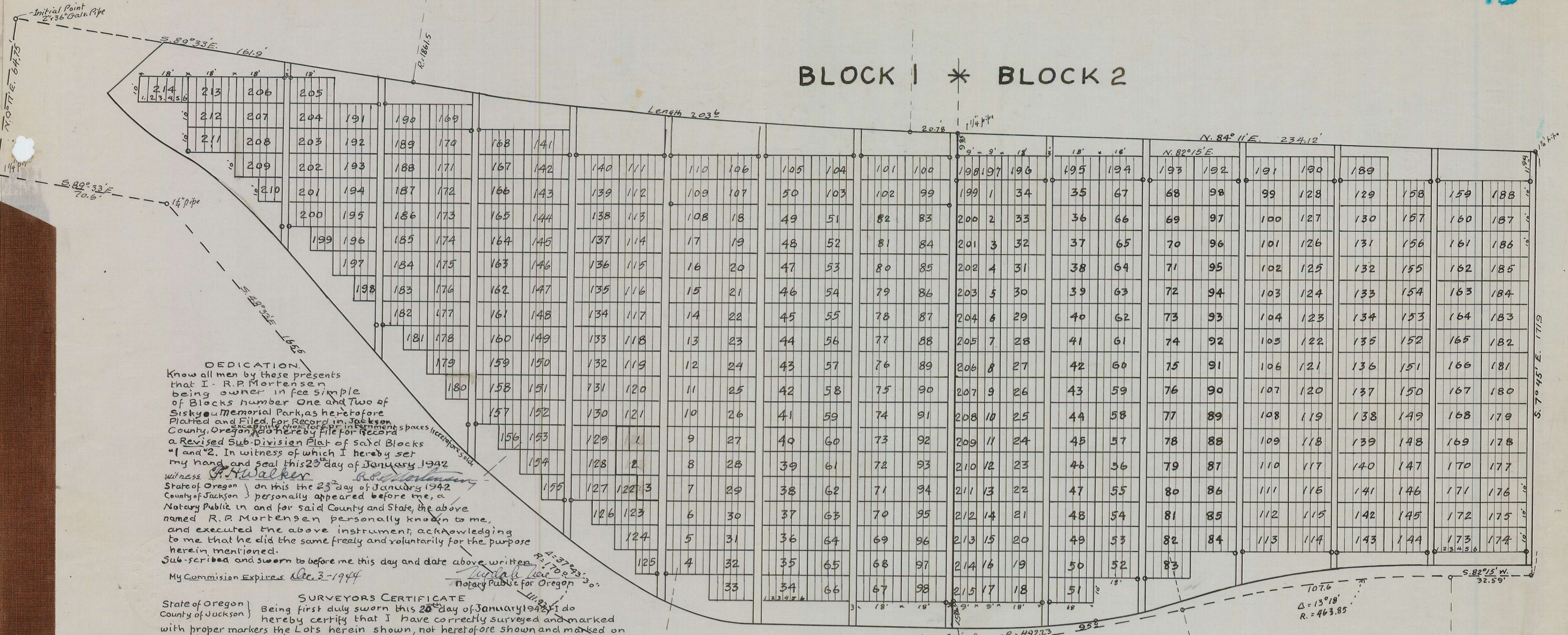


BLOCK 1 * BLOCK 2



SURVEYORS CERTIFICATE
 State of Oregon } Being first duly sworn this 26th day of January 1942, I do
 County of Jackson } hereby certify that I have correctly surveyed and marked
 with proper markers the Lots herein shown, not heretofore shown and marked on
 the original Sub-Divisions of Blocks #1 and #2; and that this is a correct representation
 of said survey made by me on the ground.

Subscribed and sworn to before me on this day and date
 My Commission Expires Dec. 3-1944

F. H. Walker
 Surveyor

Examined and approved by the City of Medford Planning Commission in regular session this the 1st day of February 1942
Attest J. W. Woodford Secy
W. B. Bennett Pres.

Examined and approved by the County Court
W. B. Bennett
 County Judge

Examined and recommended for approval
Paul Myers
 County Assessor

All Taxes paid in full to date
Edith Brown
 County Sheriff

Examined and approved
Paul B. Manning
 County Surveyor

For Order of County Commissioners approving this Plat see Vol. ___ Page ___
 of Commissioners Journal of Proceedings.
 Filed for Record this the 2nd day of April 1942 at 3 o'clock and
 Recorded in Volume N^o ___ of Plats, at Page ___ of Records of Jackson County, Ore.

F. H. Walker
 County Clerk

Note: All numbered Sections are sub-divided into Internment Spaces
 10ft. in length by 3ft. in width, and numbered consecutively,
 beginning with Number (1) at the Left end of Section.
 Radii of Curves are shown to Block Lines only.

Revised Sub-Division of Blocks 1 and 2 OF Siskiyou Memorial Park. Jackson County, Oregon.

SCALE 1 INCH = 25 FT.

JANUARY - 1942

