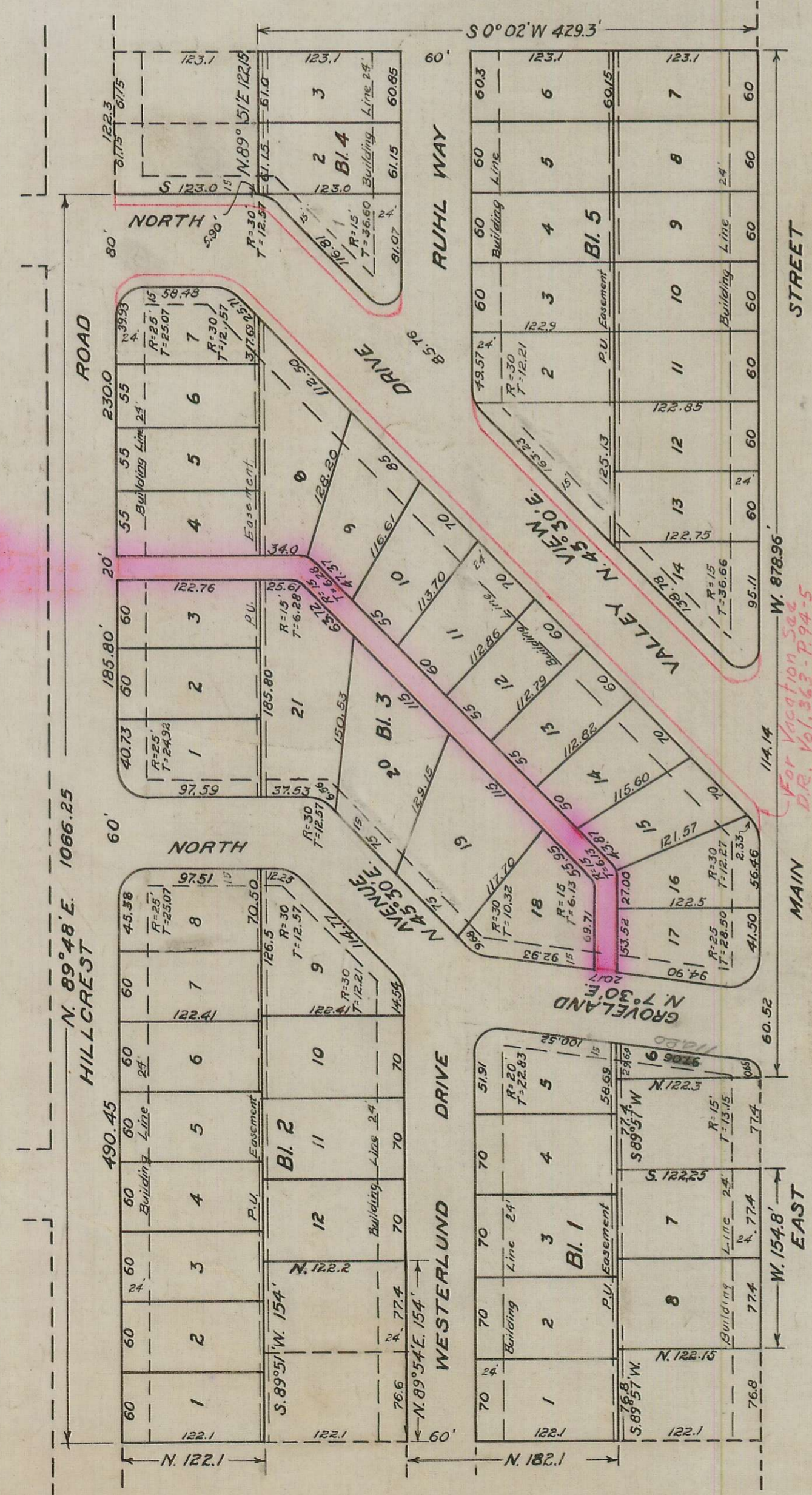


AMENDED PLAT OF EUCLID PARK ADDITION TO THE CITY OF MEDFORD, OREGON.

Scale :- 1 inch = 100 Feet.



DESCRIPTION

Beginning at a point 122.1 feet north of a 2 inch iron pipe marking the S.W. corner of Euclid Park Addition to the City of Medford, Oregon, north 161.5 feet and east 2000.6 feet from the northeast corner of D.L.C. 44, T.37.S., R.1.W. of W.M. Running thence North 182.1 feet; thence N.89°54'E, 154.0 feet; thence North 122.2 feet; thence S.89°51'W, 154.0 feet; thence North 122.1 feet; thence N.89°48'E, 1066.25 feet; thence South 123.0 feet; thence N.89°51'E, 122.15 feet; thence S.0°02'W, 429.0 feet; thence West 878.96 feet; thence North 122.3 feet; thence S.89°57'W, 77.4 feet; thence South 122.25 feet; thence West 154.8 feet; thence North 122.15 feet; thence S.89°57'W, 76.8 feet to the point of beginning. All outside angle-points marked with 12"x18" concrete monuments, all block corners with 1 1/2" x 18" pipe, all lot corners with 3/4" x 18" pipe.

DEDICATION

Know all men by these presents; that the City of Medford, a municipal corporation duly organized and existing under the laws of the State of Oregon, is the owner in fee simple of the above described tract of land, said tract of land being Lots 1 to 13, inclusive, and Lots 16 to 26, inclusive, of Block 1; Lots 3 and 4 of Block 2; Lots 1 to 13, inclusive, Lots 15 and 16 and Lots 18 to 26, inclusive, of Block 3; Lots 1 to 4, inclusive, of Block 4, of Euclid Park Addition to the City of Medford, Oregon, as shown on the official plat and recorded in the office of the Clerk of Jackson County, State of Oregon; that the City of Medford has laid out the same into lots and blocks, streets and alleys, as shown by the map hereon and that the said map is a correct representation of said survey and subdivision and we do hereby dedicate to the public for public highways, all the Streets and Alleys shown on said map and we do also hereby dedicate to the public, an 8 foot wide easement, the centerline of which is the East and West bisecting line of Block 2 and the projection of said line through Block 3 and a line 4 feet South of the said projected line, through Block 4, and also an 8 foot wide easement, the centerline of which is the East and West bisecting line through Blocks 1 and 5; said easements to be for the use of Public Utilities, and do hereby designate and name the said tract, as shown hereon, as an Amended Plat of EUCLID PARK ADDITION to the City of Medford, State of Oregon.

In witness whereof the City of Medford has caused these presents to be signed by the mayor and the recorder of said city and its corporate seal to be affixed this 26 day of July 1940

In witness whereof:

M. L. Alford
 Mayor
 State of Oregon } S.S.
 County of Jackson }

By *C. C. Furnas*
 Mayor
 By *W. Bernard Roberts*
 Recorder

Personally appeared before me, a notary public in and for said county and state, the within named C.C. Furnas and M.L. Alford, mayor and recorder, respectively, of the City of Medford, Oregon, to me personally known to be the above named, and who executed the above instrument and severally acknowledged to me that they executed the same freely and voluntarily for the purposes therein mentioned.

My Commission Expires September 4, 1941

J. O. Grey
 Notary Public

I, D.T. Mc Donough, hereby certify that this plat was made from notes taken during an actual survey and that the plat herein is a correct representation of said survey and subdivision.

D. T. Mc Donough
 Surveyor

Subscribed and sworn to before me this 26th day of July 1940

My Commission Expires September 4, 1941

J. O. Grey
 Notary Public

Examined and approved by the Medford City Planning Commission in regular session this 14th day of August 1940.

Secretary
 Examined and approved by me this 19 day of August 1940.

W. Bernard Roberts
 President

For order of County Commissioners approving this plat see page _____ Vol. _____ of Commissioners Journal of Proceedings.

Linn Hancam
 County Assessor
 of Commissioners

Examined and approved by me this 26th day of July 1940

D. T. Mc Donough
 Clerk of Jackson County

All taxes are paid to this date, 30th day of August 1940.

D. T. Mc Donough
 City Engineer

Filed for record this 29th day of August 1940, and recorded on page 10

154630

Syd J. Brown
 County Sheriff
 Vol. _____ of Plats.
 County Recorder.