

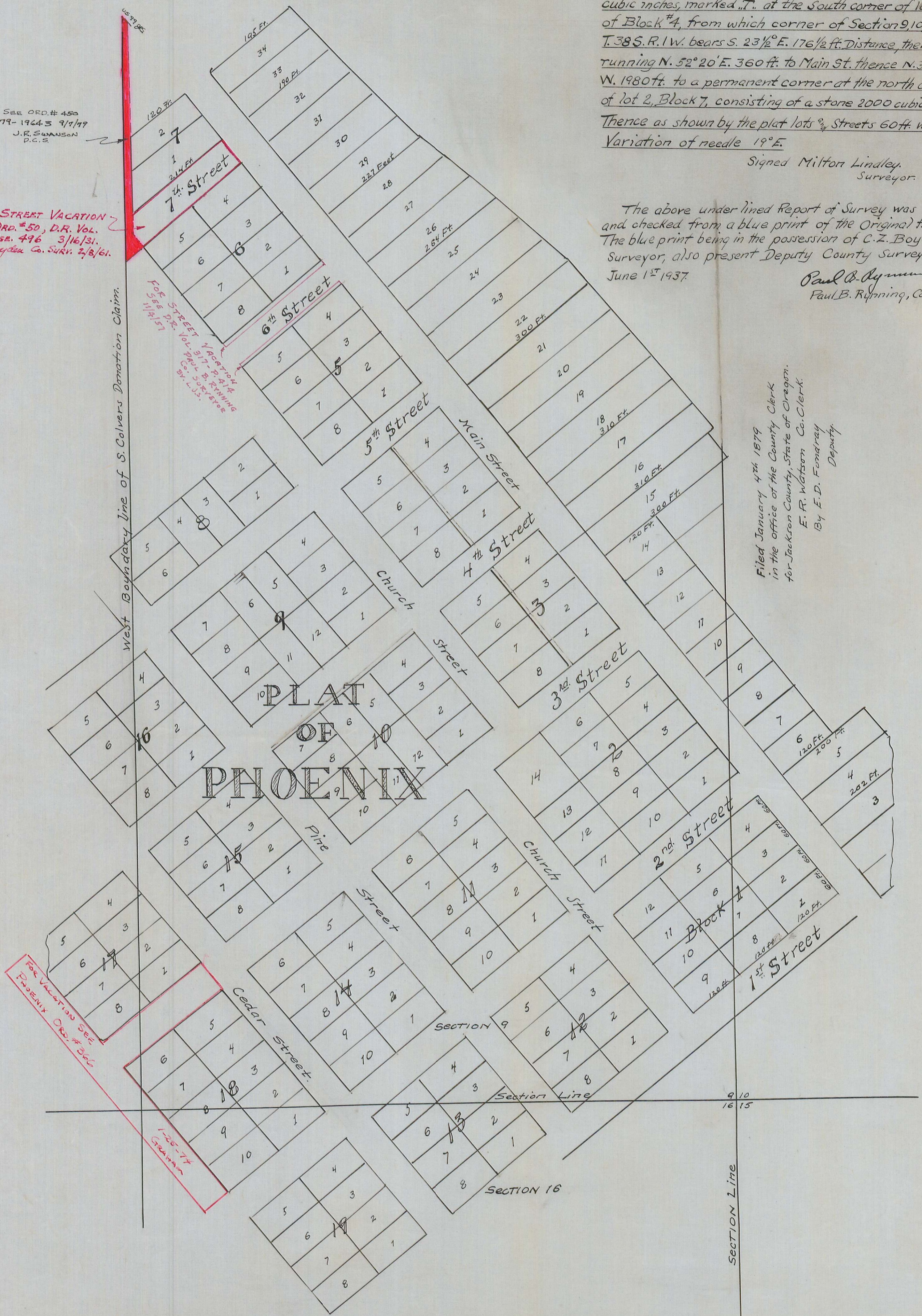
Report of a Survey made for Samuel Colver of the town of Phoenix, Jackson County Oregon, made on the 29<sup>th</sup> & 30<sup>th</sup> days of March A.D. 1872. Beginning at a sand-stone of 1400 cubic inches, marked "T." at the south corner of lot 9 of Block 4, from which corner of Section 9, 10, 15 & 16 T. 38 S. R. 1 W. bears S. 23 1/2° E. 176 1/2 ft. Distance, thence running N. 52° 20' E. 360 ft. to Main St. thence N. 37° 40' W. 1980 ft. to a permanent corner at the north corner of lot 2, Block 7, consisting of a stone 2000 cubic inches. Thence as shown by the plat lots & Streets 60 ft. wide. Variation of needle 19° E.

Signed Milton Lindley, Surveyor.

The above under lined Report of Survey was traced and checked from a blue print of the Original filed Map. The blue print being in the possession of C.Z. Boyden, Surveyor, also present Deputy County Surveyor. June 1<sup>st</sup> 1937.

Paul B. Rynning, Co. Surveyor.

Filed January 4<sup>th</sup> 1879  
in the office of the County Clerk  
for Jackson County, State of Oregon.  
E. F. Watson Co. Clerk.  
By E. D. Fondray  
Deputy.



I do hereby certify the above to be a correct plat and report of the survey of the town of Phoenix according to the field notes.

Milton Lindley  
Surveyor

Filed in the office of the County Clerk of Jackson County Oregon, May 2<sup>nd</sup> A.D. 1872.  
Silas J. Day County Clerk.  
Jackson County Oregon.

Copy from Road Records  
Vol. 1, page 215  
Dec. 11, 1936 By F.M.P.  
checked by C.Z.B.

4119  
119