

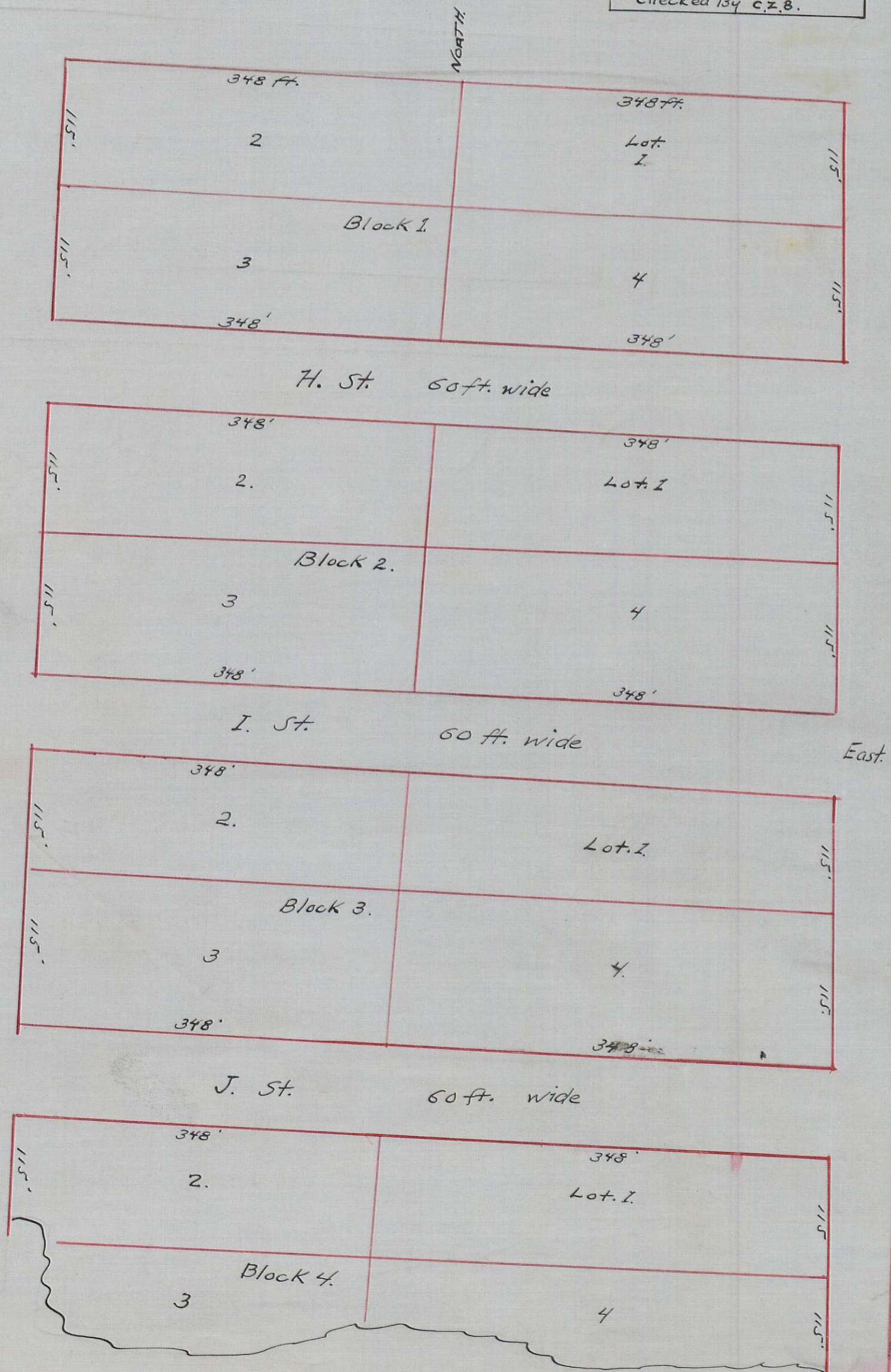
H. B. Miller & Co. Addition
to
Grants Pass.

Said Addition is on the N.E. 1/4 of N.W. 1/4 of S.E. 1/4 of Sec.
18 T. 36 S. Range 5 W. Oct. 2nd 1884

Jas. Jeffrey
C.S.

Filed Oct. 2nd 1884.
W. H. Parker
Co. Clerk.

Copy from Road Records
Vol. 2. page 57
Dec. 9, 1936 By F.M.P.
checked by c.z.B.



Rail Road Addition to Grants Pass.

Plat of the survey of the R.R. Addition to Grants Pass Blocks 11, 14, 15, 16, 17, 18, 19,
22, 25, 28, 29, 30, 31, 32, 37, 38, 41 & 42 are full Blocks containing 8 Lots 50x100 feet
with a twenty foot alley through said blocks from E. to W. said blocks are 200x220 feet
Blocks 7, 13, 20, 27, 35 & 44 are full blocks of eight Lots each 75x50 the blocks being 200x175 ft
without Allies. Blocks 2, 8, 12, 21, 26, 36 & 43 are full blocks with only four lots in each, the blocks are
200x90 ft joining Rail Road right of way without streets on N. Side.
The rest of the blocks are more or less fractional as represented in the diagram.
The streets are all 60 ft wide except the one immediately North and adjoining the R.R. which is 50 ft.
Blocks 3 & 4 were not platted but joined together in one lot or parcel.
The town is located in the S.E. corner of the S.W. 1/4 of N.E. 1/4 of Sec. 18. T. 36. S. R. 5 W.
The S & E. lines of said lines are here represented.

I hereby acknowledge that the foregoing is a true and correct plat of the survey of
the Rail Road Addition to the Town of Grants Pass.
Dated December 15, 1883.

W. R. Willis

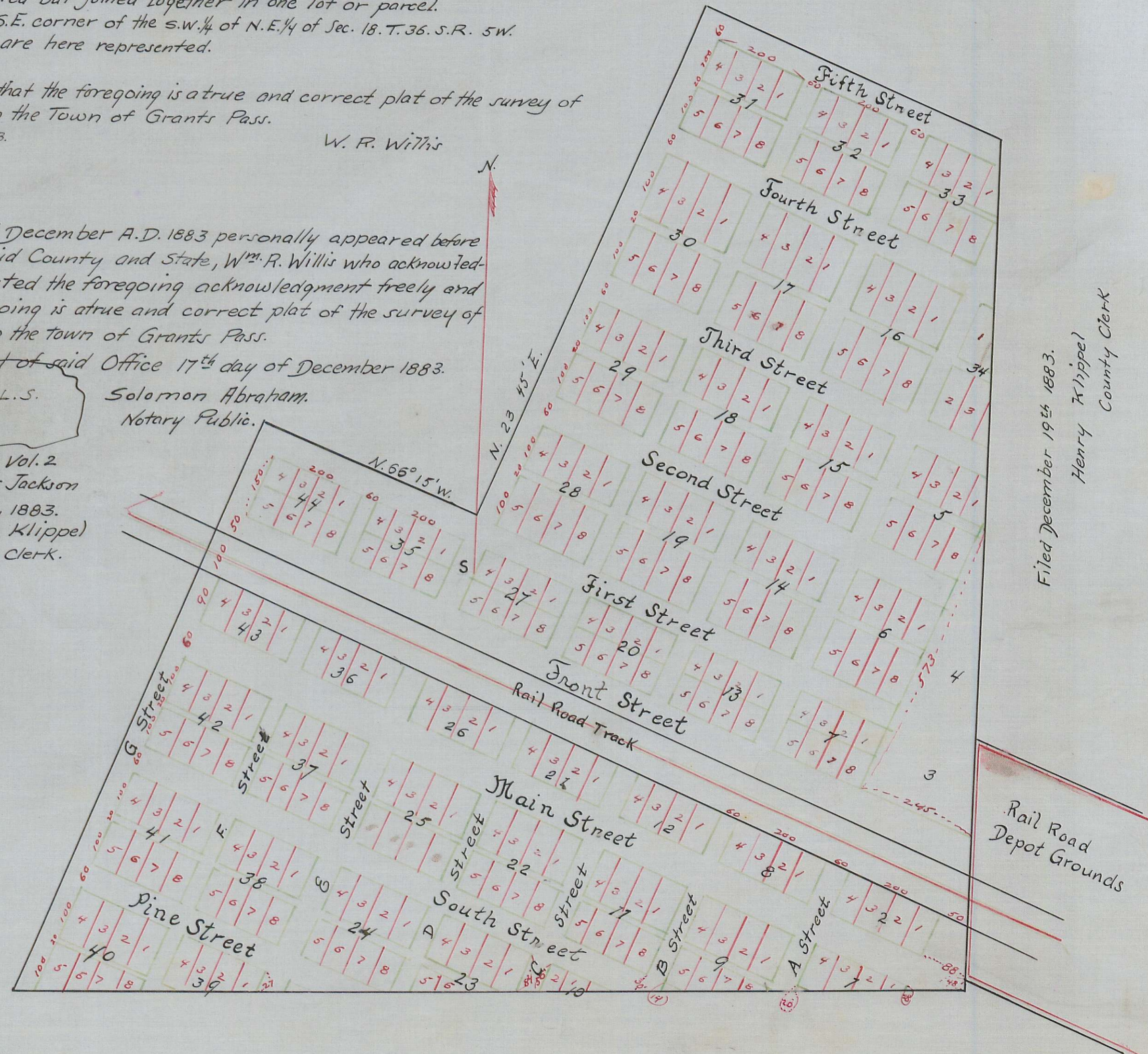
State of Oregon } s.s.
County of Douglas }

On this 17th day of December A.D. 1883 personally appeared before
me a Notary Public for said County and State, W^m. R. Willis who acknowl-
edged to me that he executed the foregoing acknowledgment freely and
voluntarily, and the foregoing is a true and correct plat of the survey of
the Rail Road Addition to the town of Grants Pass.

Witness my hand and seal of said Office 17th day of December 1883.

L.S. Solomon Abraham,
Notary Public.

Duly recorded at page 36 Vol. 2
Records of Public Roads for Jackson
County Oregon. Dec. 19, 1883.
Henry Klippel
County Clerk.



Filed December 19th 1883.
Henry Klippel
County Clerk

Copy from Road Records
Vol. 2. page 36
Dec. 8, 1936. By F.M.P.
checked by c.z.B.

Grants Pass Railroad Addition 4/102

R.R. 2 - 36