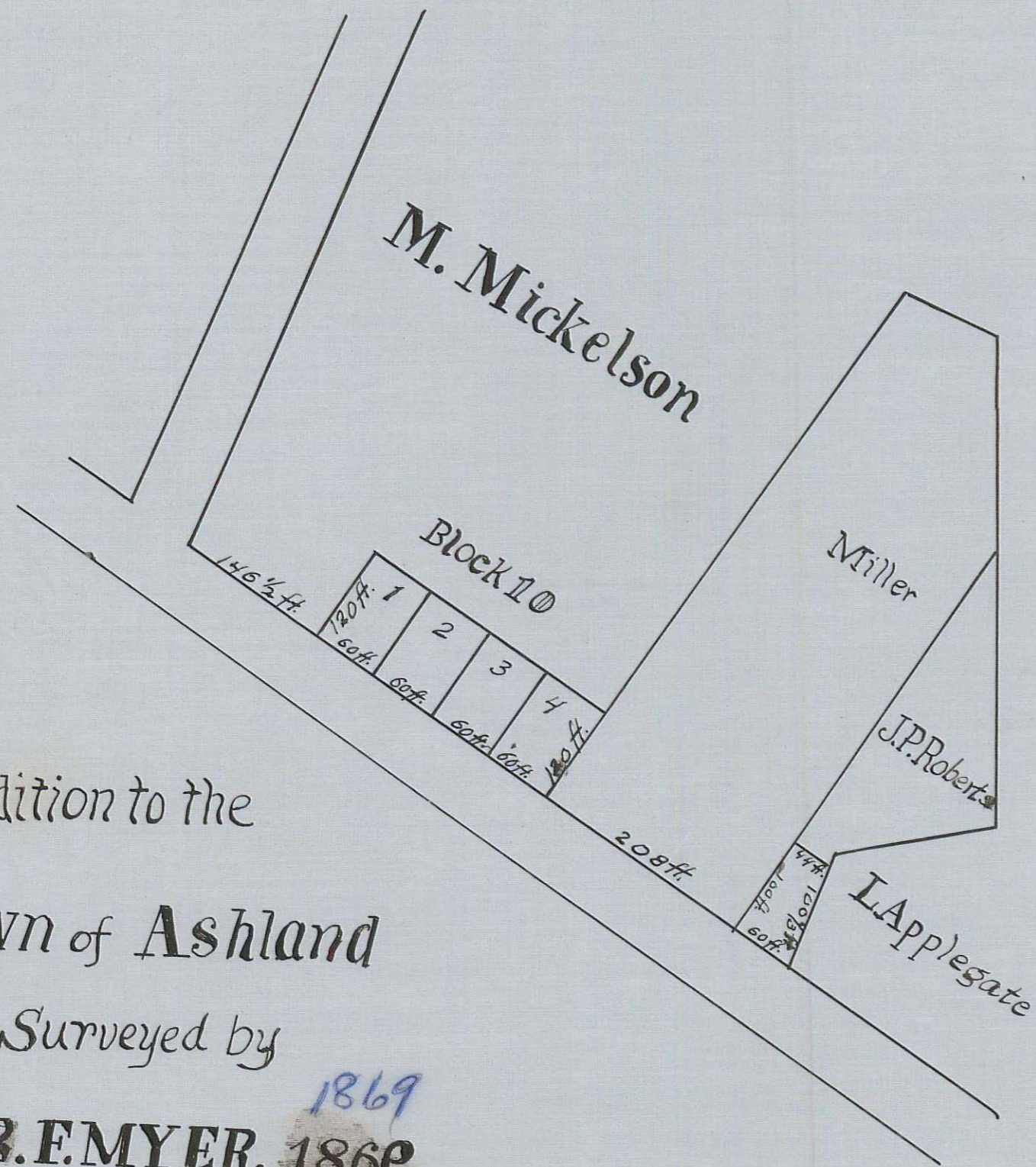


Addition to the
Town of Ashland
 Surveyed by
B.F. MYER, 1869
 Scale 132 feet to the inch



Filed for record April 10th 1869.
 And Recorded May 7th 1869.

Wm. H. Apple County Clerk
 Jackson County Ore.

Copy from Road Records
 Vol. 1 - page 130
 Dec. 10, 1936 By F.M.P.
 Checked by C.Z.B.

Map
 of
 Myer's Tract
 in
 Ashland
 Jackson Co., Oregon.

Surveyed by B.F. Myer
 Scale 100 Feet to the Inch
 Stone for Center of Street,
 Streets Run North and South
 East and West.
 April 23rd 1884.



Filed in the office of the County Clerk
 of Jackson County Oregon.
 May 8th 1884.
 Henry Klippel
 County Clerk
 By S. J. Day Deputy.

136 Feet	1	136 Feet	2
50	3	65	4
50	5	65	6
50	7	65	8
50	9	65	10
50	11	65	12
50	13	65	14
50	15	65	16
50	17	65	18
50	19	65	20
50	21	65	22
50	23	65	24
50	25	65	26
50	27	65	28
50	29	65	30
50	31	65	32
50	33	65	34
50	35	65	36
50	37	65	38
50	39	65	40
50	41	65	42
50	43	65	44
50	45	65	46
50	47	65	48
50	49	65	50
50	51	65	52
50	53	65	54

Street 60 Feet

South West Corner of
 Claim No. 39 T. 39 S. R. 1 E.

IOWA Half of Street																		
38	50 feet	50	50	50	50	50	50	50	50	50	50	50	50	50	50			
62	64	66	68	70	72	74	76	78	80	82	84	86	88	90	92	94	96	98

Street 60 feet.

55	59	60	61	63	65	67	69	71	73	75	77	79	81	83	85	87	This is torn away.	
50	50	50	50	50	50	50	50	50	50	50	50	50	50	50	50	50	50	50
50	Half of Street																	

Copy from Road Records Vol. 2, pp. 45.
 Dec. 9, 1936 By F.M.P.
 Checked by C.Z.B.

Myer's Tract, Ashland, Ore. 4/95
 95