

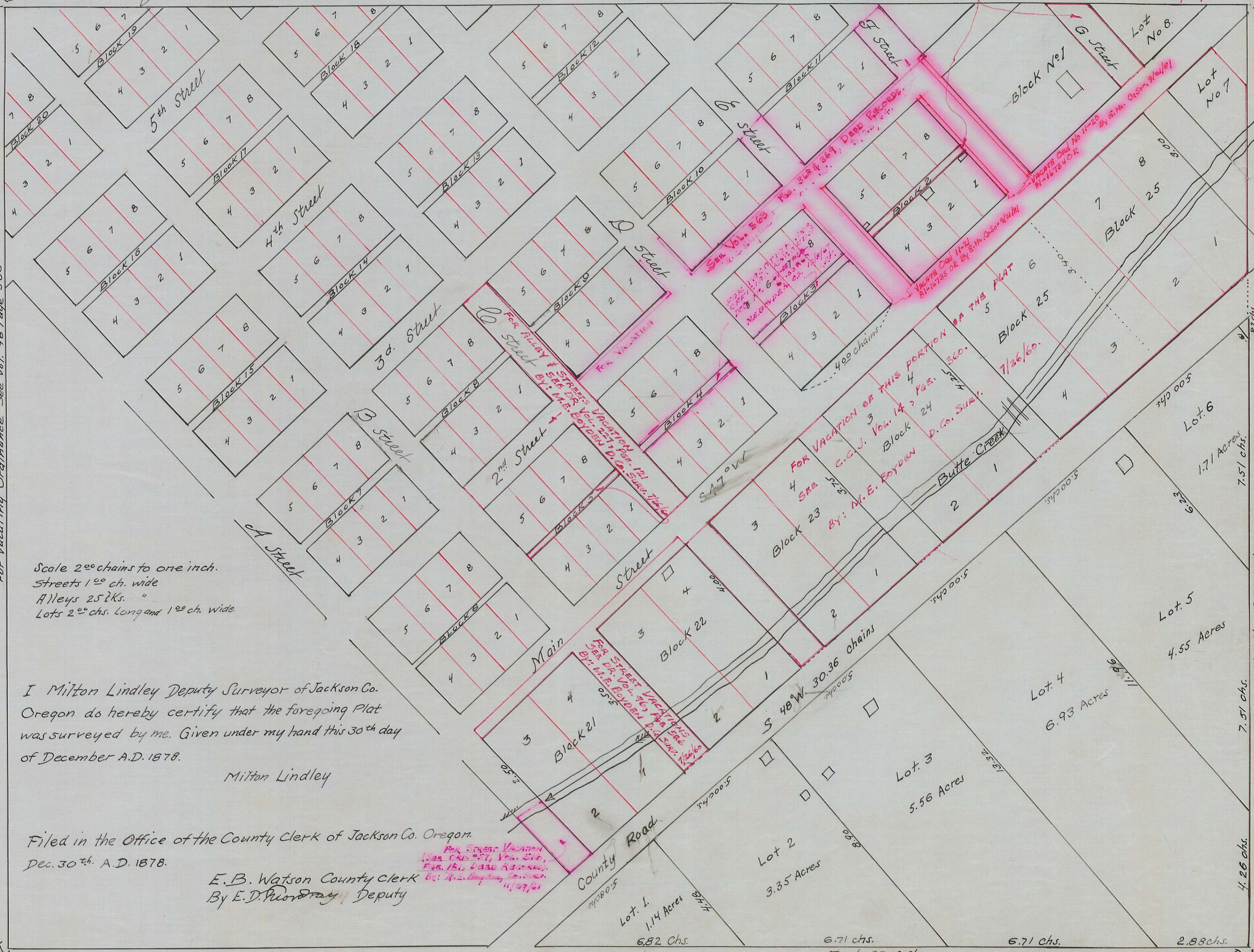
# J. J. Fryer's Division of Eagle Point

## Part of Donation Claim No. 46 in Sec's. 3 and 4 Township 36 S. R. 1 W.

FOR STREET & ALLEY VACATION  
SEE DR. VOL. 96, PAGE 586.  
By: M. E. BOYDEN D. Co. SURV. 7/26/60

NE Corner of Donation Claim

For Vacating Ordinance See Vol. 96 Page 586



Scale 2<sup>00</sup> chains to one inch.  
Streets 1<sup>00</sup> ch. wide  
Alleys 25<sup>00</sup> ch. "  
Lots 2<sup>00</sup> chs. long and 1<sup>00</sup> ch. wide

I Milton Lindley Deputy Surveyor of Jackson Co. Oregon do hereby certify that the foregoing Plat was surveyed by me. Given under my hand this 30<sup>th</sup> day of December A.D. 1878.

Milton Lindley

Filed in the Office of the County Clerk of Jackson Co. Oregon.  
Dec. 30<sup>th</sup> A.D. 1878.

E. B. Watson County Clerk  
By E. D. [Signature] Deputy

FOR STREET VACATION  
SEE DR. VOL. 96, PAGE 586  
By: M. E. BOYDEN D. Co. SURV. 7/26/60

Copy from Road Records  
Vol. 2 Page 3.  
Dec. 3, 1936 By F.M.P.  
Checked by [Signature]

SE Corner of Donation Claim  
4/52

N.W. Corner of Donation Claim

S.W. corner of Donation Claim