

Plat of Eagle Point 1879.

Beginning at a stone marked T on the east line of Donation Claim No 46 (T. 36 S. R. 1 W.) 19 ch. 91 links North from the South east corner of the Claim where the N.W. line of Lot No. 4 intersects the claim line and running N. 45° 40' E. to a stone marked T at the North corner of Lot 1 in Block 7 and thence as shown by the plat. Streets 60 feet wide. Lots in the full Blocks 4 by 13 rods. Alley 18 feet wide.

I hereby certify this to be a correct plat and notes as surveyed by me May 19th 20th and 21st 1879.
Milton Lindley
Surveyor

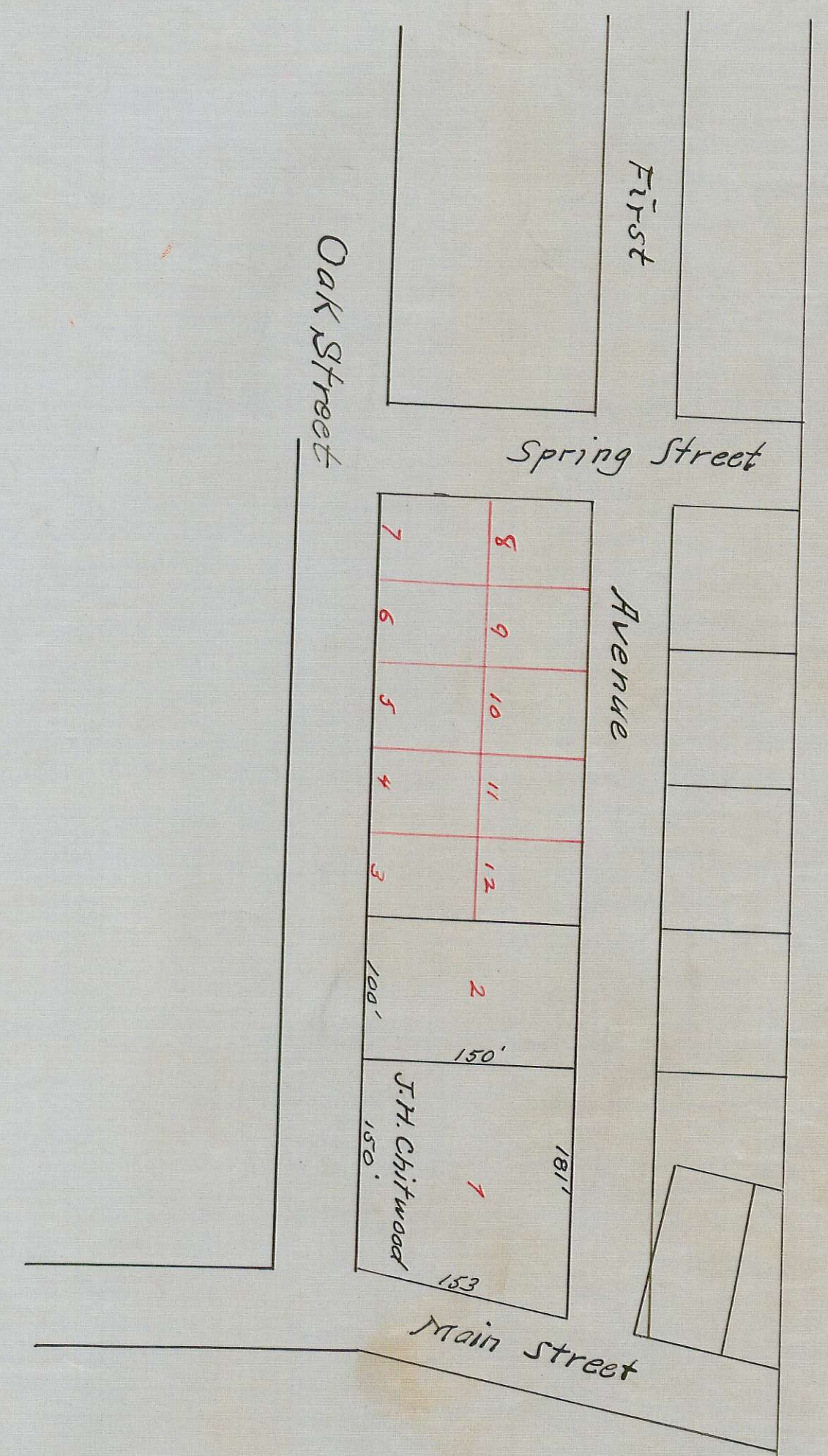
We John Daley and Levona Daley his wife, Eber Emery and Sophia Emery his wife, Peter Simon and Elizabeth Simon his wife hereby acknowledge that we have caused the foregoing Plat survey thereof to be made and that it is our wish and intention that the same be recorded and the tract of land included therein be set apart and used as a Town Site. Dated August 29 A.D. 1879.

Witness
Chas. Yorkham
David Henley

John Daley (Seal)
Levona Daley (Seal)
Eber Emery (Seal)
Sophia Emery (Seal)
Peter Simon (Seal)
Elizabeth Simon (Seal)

For Vacating Ordinance See
Vol. 96 Page 582-583.

Copy from Road Records
Vol. 2. page 12.
Dec. 4, 1936. By F.M.P.
Checked By C.Z.B.



Revised Plat of Lots 3-4 & 5 of Block 19

of the
Chitwood Tract.
Ashland Oregon.

Filed Oct. 29 1883
Henry Klippel
County Clerk

Copy from Road Records
Vol. 2. page 31.
Dec. 4, 1936 By F.M.P.
Checked By C.Z.B.

4/45B

