

Copy

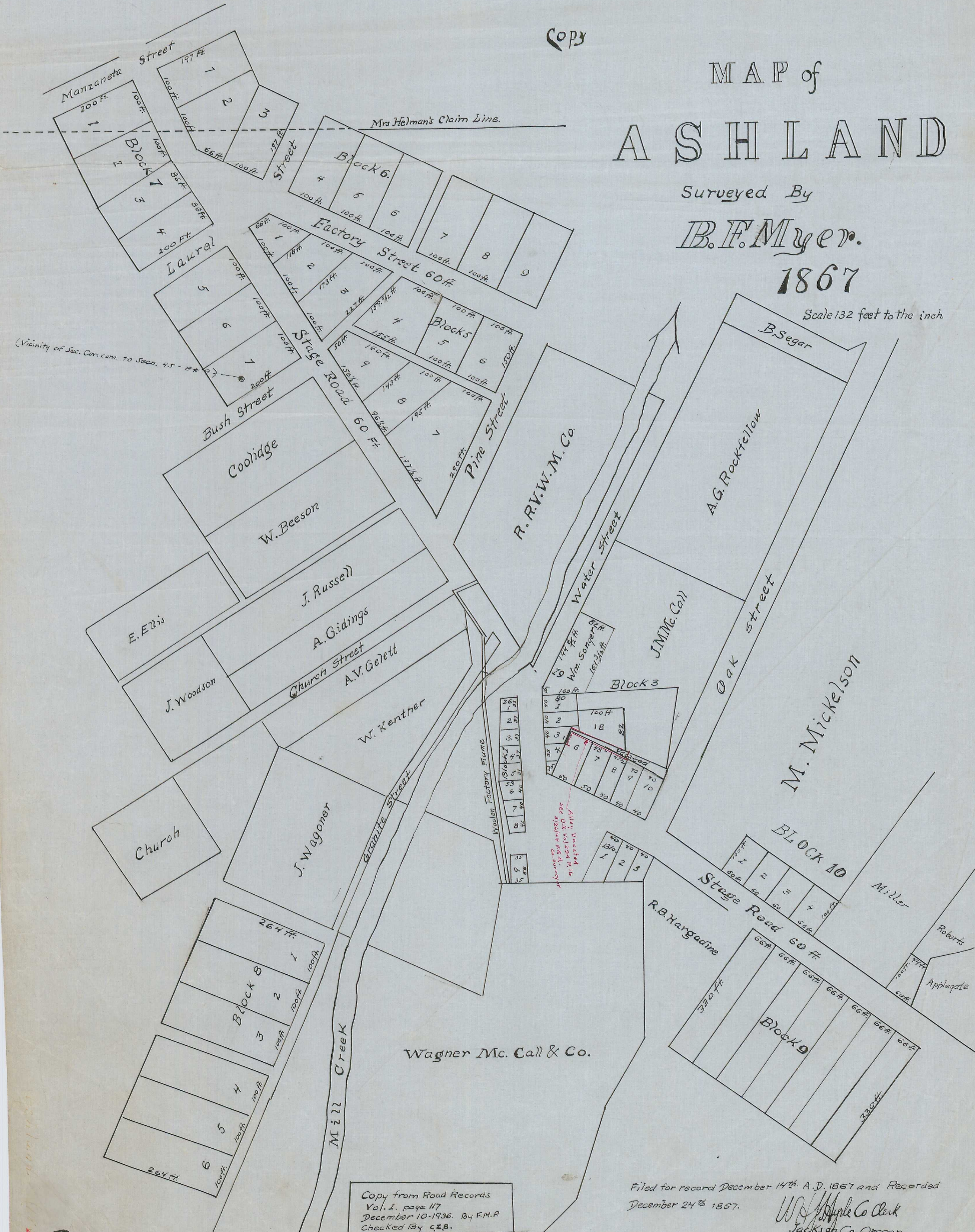
# MAP of ASHLAND

Surveyed By

B.F. Myer.

1867

Scale 132 feet to the inch



(Vicinity of Sec. Cor. com. to Secs. 45 - 57)

Copy from Road Records  
Vol. 1, page 117  
December 10-1936. By F.M.P.  
Checked by C.Z.B.

Filed for record December 14<sup>th</sup>. A.D. 1867 and Recorded  
December 24<sup>th</sup> 1867.

W.B. Myer Co. Clerk  
Jackson Co. Oregon.