

9935

SURVEY SUPPLEMENT FOR CORNER RESTORATION

Sections 34 & 35, T35S, R1W
and
Sections 2 & 3, T36S, R1W
84-3

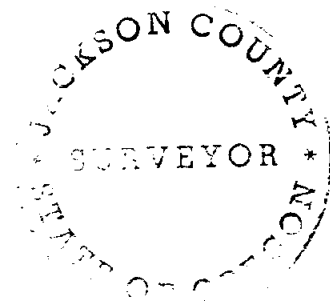
BY: Edward A. McGinty
Jackson Co. Surveyor
County Courthouse
Medford, Oregon

April 23, 1984
Scale: 1" = 50'
Monuments: See Narrative

REGISTERED
PROFESSIONAL
LAND SURVEYOR

Edward A. McGinty

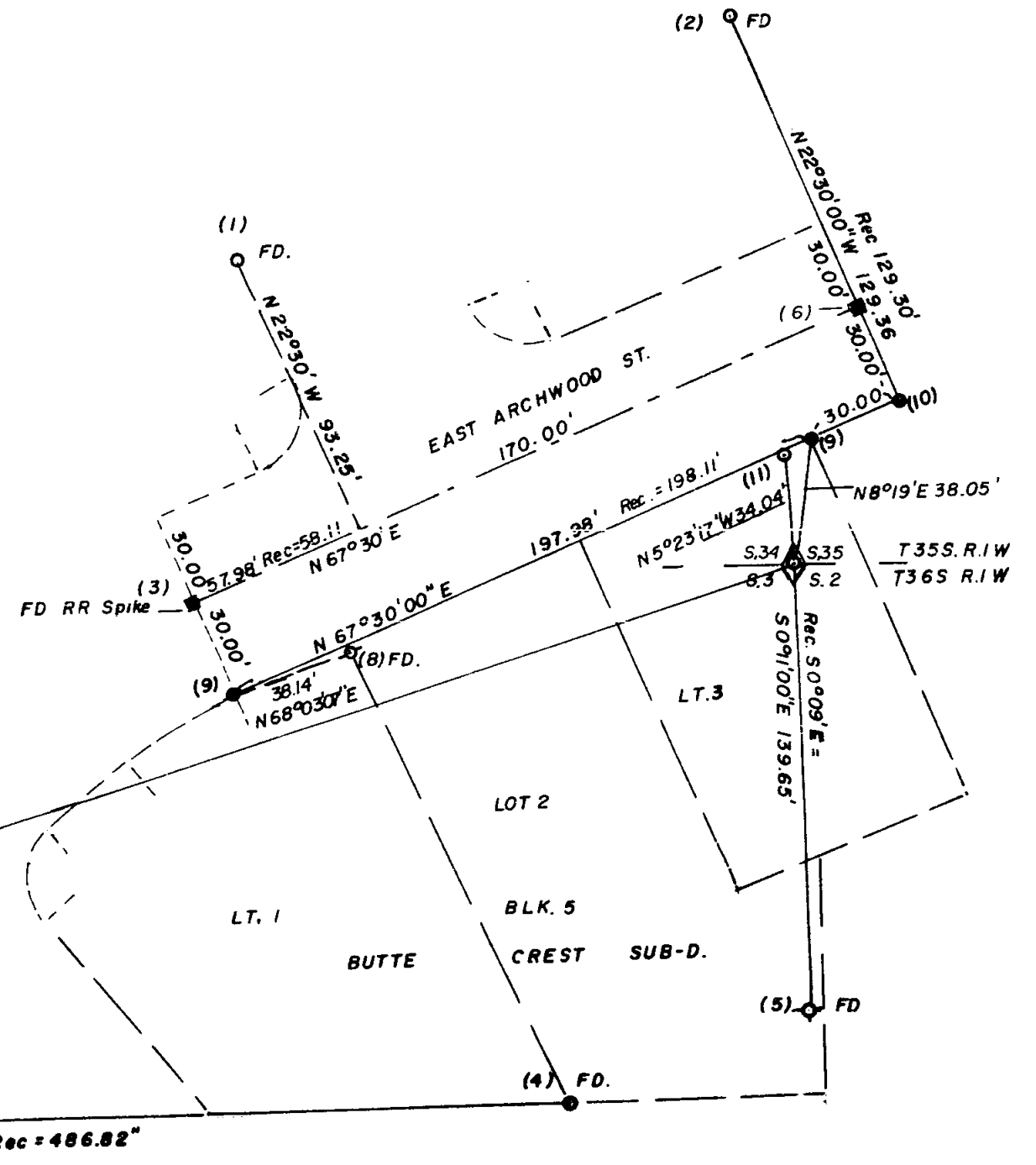
OREGON
JULY 30, 1953
EDWARD A. MCGINTY
301



** RECEIVED **
Date: 4/23/84 By SK
This survey consists of:
1 sheet(s) Map
1 page(s) Narrative
JACKSON COUNTY
SURVEYOR

NE. Cor.
DLC 45

S73°24'14"W 586.46' = Rec S73°24'40"W 586.5'
S89°55'30"E 486.87' Rec = 486.82"



9935

SURVEY NARRATIVE TO COMPLY WITH PARAGRAPH 209.250
OREGON REVISED STATUTES

CORNER RESTORATION

Section Corner common to Sections 34 and 35, Township 35 South, Range 1 West and Sections 2 and 3, Township 36 South, Range 1 West, Willamette Meridian.

BY: Edward A. McGinty
Jackson County Surveyor
County Courthouse
Medford, Oregon 97501

DATE: April 23, 1984

This is a survey supplement for the restoration of the corner of Sections 34 & 35, T35S, R1W and Sections 2 & 3, T36S, R1W, W.M., first established in 1943 with a 2 ins. iron pipe on a proportional distance and re-established in 1967 with a 1 ins. pipe inside a 2 ins. pipe. This corner monument was either destroyed or inaccessible due to construction of a garage. The determination of the location was from previous existing evidence and other information available.

MONUMENTS:

- 1) An original monument of Butte Crest Subdivision, being a smooth 5/8 ins. iron pin, set approx. 6 ins. deep.
- 2) An original monument of Butte Crest Subdivision, being a 5/8 ins. iron pin, exposed 4 ins.
- 3) Railroad spike set in the late sixties from original monuments of Butte Crest Subdivision, prior to construction of sidewalks.
- 4) Original lot corner, being a 5/8 ins. iron pipe, exposed 4 ins.
- 5) County Surveyor reference on 1967 re-establishment, being a 3/4 ins. iron pin, exposed 4 ins.
- 6) Set a railroad spike from record data and previous information.
- 7) Northeast corner of DLC 45 being a 3 ins. pipe with a 4 ins. brass cap (record 6 ins.) set approx. flush (See re-estabed corner).
- 8) Fd. a 5/8 ins. rebar set approx. flush, of unknown origin. (This is not an original corner for Lots 1 and 2.)
- 9) Set 5/8 ins. iron pin, 24 ins. long, 2 ins. deep with plastic cap mkd. Jackson C.S.
- 10) Same as (9), approx. 14 ins. deep.
- 11) Set 1 ins. galvanized iron pipe, 36 ins. long with 2½ ins. brass cap mkd. Jackson County C.S., flush with sidewalk as a reference to section corner.

For additional information see re-establishment notes in "Special Corner Book".

