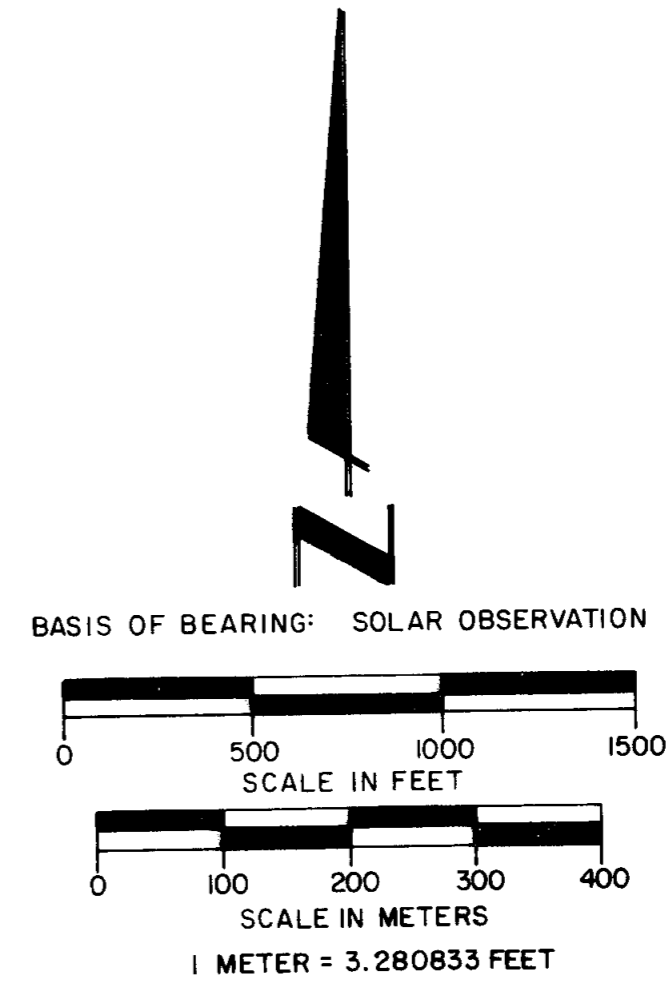
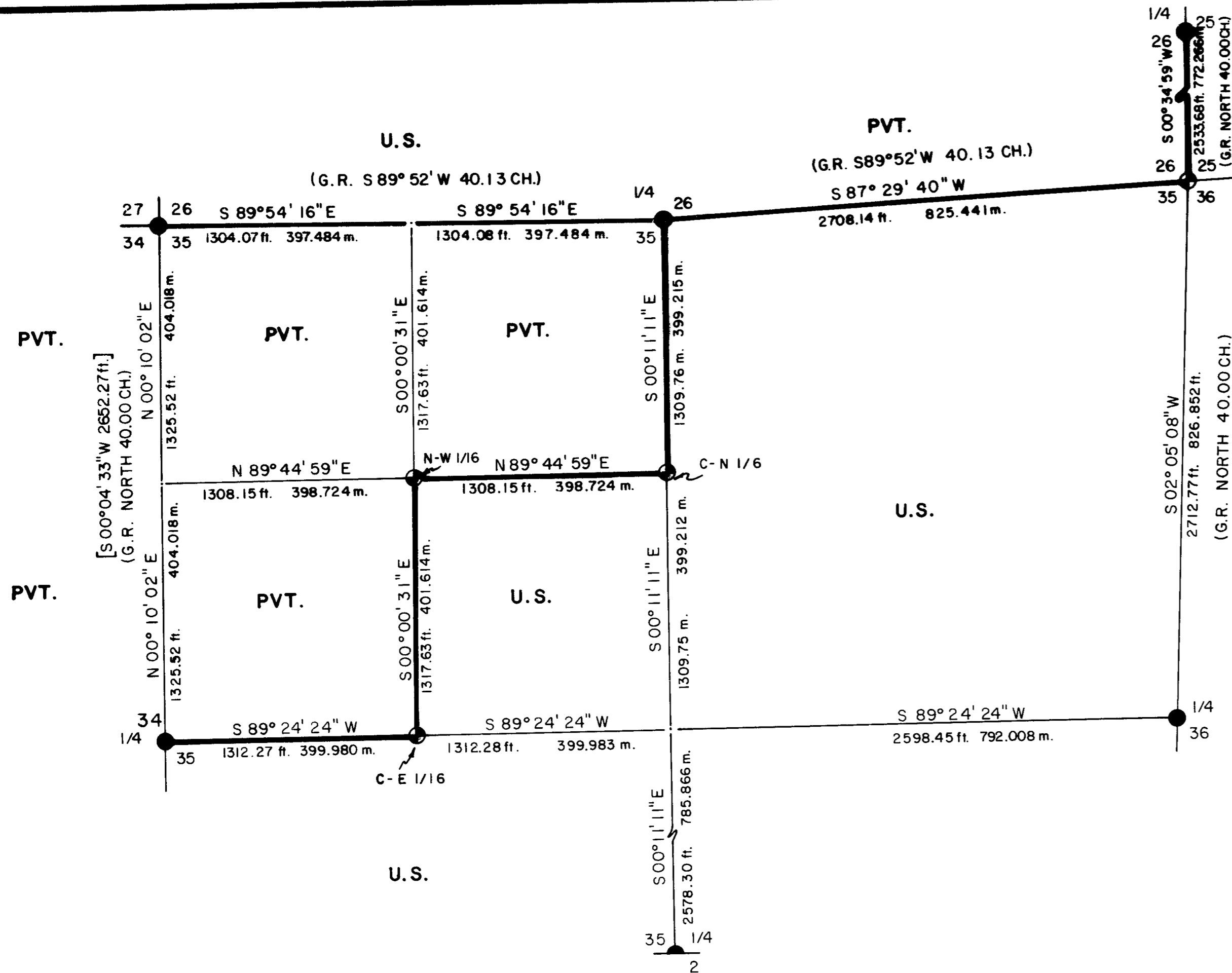


**MAP OF SURVEY  
FOR  
ROGUE RIVER NATIONAL FOREST  
P.O. BOX 520  
MEDFORD, OREGON  
MARCH 9, 1984**



**HISTORY OF SURVEYS**

The original survey of the 9TH. Standard Parallel South, Range 1 West, which is also the South Boundary of Township 39 South, Range 1 West, and the interior subdivision lines of Township 39 South, Range 1 West were surveyed by Rufus S. Moore, Deputy Surveyor under Contract No. 475 dated July 3, 1883.

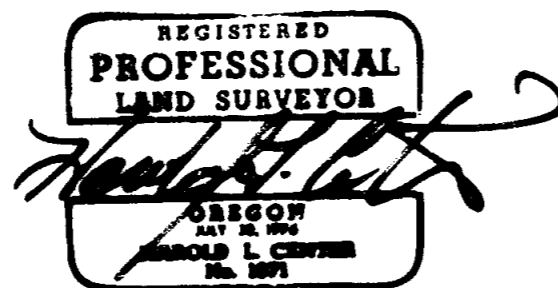
The Bureau of Land Management, Division of Cadastral Surveys and the Jackson County Surveyor remonumented from original corner point evidence, all controlling corner points.

Malcolm N. Clark, Registered Professional Land Surveyor No. 601, performed a retracement of the North half of the West line of Section 35 in December of 1980 (Reference Jackson County Surveyor Records File No. 9139).

No other surveys of record were noted.

**CERTIFICATE OF SURVEY**

I, Harold L. Center, Registration No. 1071 Registered Professional Land Surveyor, State of Oregon, hereby certify that this plat correctly represents a survey made by me or under my direction in conformance with the laws of the State of Oregon, at the request of the U.S. Forest Service.

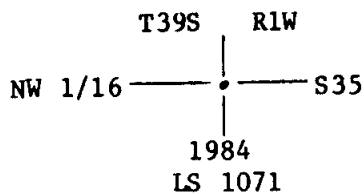


**LEGEND**

- ⊙ SET 2 1/2" x 3' LG. IRON POST WITH 2 1/2" DIA. BRASS CAP.
- FOUND STANDARD BLM OR COUNTY SURVEYOR BRASS CAP MONUMENT UNLESS OTHERWISE NOTED.
- [ ] DENOTES R.S. 9139 RECORD.
- ( ) DENOTES GOVERNMENT RECORD
- SECTION LINE CALCULATED FROM TRAVERSE SURVEY.
- PROPERTY LINE MARKED AND POSTED.

**\*\* RECEIVED \*\***  
Date 4/9/84 By SK  
This survey consists of:  
1 sheet(s) Map  
5 page(s) Narrative  
JACKSON COUNTY SURVEYOR

U.S. DEPARTMENT OF AGRICULTURE FOREST SERVICE REGION 6 ROGUE RIVER NATIONAL FOREST	
DEPENDENT RESURVEY AND SECTION SUBDIVISION SECTION 35, T. 39S., R. 1 W., W.M. JACKSON COUNTY, OREGON	
REVIEWED BY: <u>W. J. McShane</u>	DATE <u>3/19/84</u>
REVIEWED BY: <u>Dick Matthews</u>	DATE <u>3/19/84</u>
PROJECT 83-20	



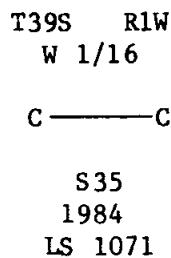
And the following references:

An 8-inch diameter fir bears N48°34'E, 16.25 feet distance and scribed X-BT.

A 14-inch diameter fir bears S88°29'E, 22.55 feet distance and scribed NW 1/16 S35 LS1071 BT.

Center west one-sixteenth corner Section 35, Township 39 South, Range 1 West.

At the corner point I set a 2 1/2 inch diameter galvanized iron post with a 2 1/2 inch diameter brass cap marked:



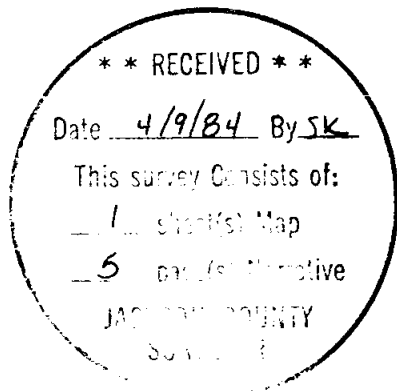
And the following references:

A 21-inch diameter fir bears N39°19'E, 10.00 feet distance and scribed CW 1/16 S35 LS1071 BT.

A 13-inch diameter fir bears S66°19'W, 28.20 feet distance and scribed CW 1/16 S35 LS1071 BT.

March 9, 1984

HAROLD L. CENTER  
Registered Professional Land Surveyor  
Oregon Certificate No. 1071



And the following references:

A 6-inch diameter fir bears N0°33'E, 56.65 feet distance with scribe marks visible.

A 56-inch diameter fir bears N42°02'E, 43.60 feet distance with a healed blaze.

An 8-inch diameter fir bears N77°15'E, 48.96 feet distance with scribe marks visible.

One-quarter corner to Section 35, Township 39 South, Range 1 West (standard corner on 9th standard parallel South Range 1 West).

At the corner point I found a standard Bureau of Land Management brass cap monument marked:

U.S. Dept. of Interior  
Unlawful to disturb  
S.C.  
T39S R1W  
  
1/4S35  
  
1972  
Cadastral Surveys  
Bureau of Land Management

And the following references:

A 13-inch diameter fir bears N84°20'W, 7.10 feet distance with a healed blaze.

A 40-inch diameter fir bears N49°28'E, 42.28 feet distance with a healed blaze.

A 26-inch diameter broken fir stump bears N56°36'E, 20.89 feet distance with a healed blaze.

CORNERS ESTABLISHED THIS SURVEY

Center north one-sixteenth corner Section 35, Township 39 South, Range 1 West.

At the corner point I set a 2½ inch diameter galvanized iron post with a 2½ inch diameter brass cap marked:

T39S R1W  
C  
N 1/16 | S35  
C  
1984  
LS 1071

And the following references:

A 22-inch diameter fir bears N41°11'E, 14.80 feet distance and scribed CN 1/16 S35 LS1071 BT.

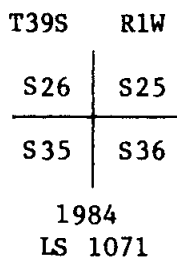
A 6-inch diameter fir bears N48°37'W, 10.20 feet distance and scribed CN 1/16 S35 LS1071 BT.

Northwest one-sixteenth corner Section 35, Township 39 South, Range 1 West.

At the corner point I set a 2½ inch diameter galvanized iron post with a 2½ inch diameter brass cap marked:

Section corner to Sections 25, 26, 35 and 36, Township 39 South, Range 1 West.

At the corner point I found a 20"x12"x4" dimension stone with one grove on the south and east sides of the stone. I remove said stone and at the exact corner point I set a 2 1/2 inch diameter galvanized iron post with a 2 1/2 inch diameter brass cap marked:



And the following references:

A 4.00 foot square, 2 foot high mound of stone the center of which bears east 5.90 feet.

A 13-inch diameter fir bears N74°10'E, 33.71 feet distance and scribed T39S R1W S25 LS1071 BT.

A 19-inch diameter fir bears S31°07'E, 19.49 feet distance and scribed T39S R1W S36 LS1071 BT.

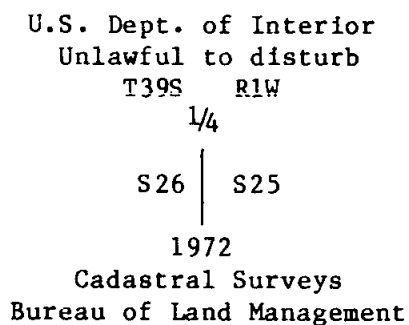
A 13-inch diameter fir bears S63°00'W, 20.90 feet distance and scribed T39S R1W S35 LS1071 BT.

A 9-inch diameter fir bears N47°35'W, 13.65 feet distance and scribed T39S R1W S26 LS1071 BT.

Note. Original stone monument buried under iron post.

One-quarter corner to Sections 26 and 25, Township 39 South, Range 1 West.

At the corner point I found a standard Bureau of Land Management brass cap monument marked:



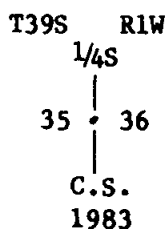
And the following references:

A 28-inch diameter fir bears N15°42'W, 22.40 feet distance with a healed blaze.

A 19-inch diameter fir bears S84°38'E, 39.34 feet distance with a healed blaze.

One-quarter corner to Sections 35 and 36, Township 39 South, Range 1 West.

At the corner point I found a standard Jackson County Surveyors brass cap monument marked:



An 18-inch diameter sawed fir stump bears N54°28'E, 24.00 feet distance with no scribe marks visible.

A 30-inch diameter sawed fir stump bears N80°04'W, 34.40 feet distance with partial scribe marks visible.

An 8-inch diameter fir bears N35°03'W, 41.30 feet distance with scribe marks visible.

Section corners to Sections 26, 27, 34 and 35, Township 39 South, Range 1 West.

At the corner point I found a standard Bureau of Land Management brass cap monument marked:

U.S. Dept. of Interior  
 Unlawful to disturb  
 T39S    RLW  
 S27    |    S26  
 -----  
 S34    |    S35  
 1973  
 Cadastral Surveys  
 Bureau of Land Management

And the following references:

A 16-inch diameter fir bears N36°53'W, 32.90 feet distance with a healed blaze.

A 12-inch diameter fir bears N74°11'E, 13.80 feet distance with scribe marks visible.

A 7-inch diameter fir bears S69°12'E, 13.70 feet distance with a healed blaze.

A 7-inch diameter sawed fir stump bears S26°03'E, 24.20 feet distance with a healed blaze.

A 15-inch diameter sawed fir stump bears S34°00'W, 12.20 feet distance with a healed blaze.

One-quarter corner to Sections 26 and 35, Township 39 South, Range 1 West.

At the corner point I found a standard Bureau of Land Management brass cap monument marked:

U.S. Dept. of Interior  
 Unlawful to disturb  
 1/4  $\frac{S26}{S35}$   
 1972  
 Cadastral Surveys  
 Bureau of Land Management

And the following references:

A 41-inch diameter pine bears N29°03'W, 28.90 feet distance with a healed blaze.

A 12-inch diameter fir bears S38°04'E, 5.40 feet distance with a healed blaze.

A 12-inch diameter madrone bears S58°03'W, 8.70 feet distance with a healed blaze.

SURVEY NARRATIVE TO COMPLY WITH  
PARAGRAPH 209.250 OREGON REVISED STATUTES

**SURVEY FOR:** Rogue River National Forest  
P. O. Box 520  
Medford, OR 97501

**LOCATION:** Section 35, Township 39 South, Range 1 West,  
Willamette Meridian, Jackson County, Oregon.

**BASIS OF BEARING:** Solar observation

**PURPOSE:** To establish monuments and mark and post property  
lines separating National Forest and private lands.

**PROCEDURE:** I began this survey with an investigation of the  
controlling corners required for subdivision of  
this section. Each controlling corner had been  
remonumented from original corner evidence by  
either the Bureau of Land Management or the Jackson  
County Surveyor, with the exception of the corner  
common to Sections 25, 26, 35 and 36. This corner  
had not been recovered since the date of original  
establishment. With the required corner control  
verified I performed a closed traverse tying each  
controlling corner to the closed traverse. I  
extended my survey east to the one-quarter corner  
to Sections 25 and 36 and north to the one-quarter  
corner of Sections 25 and 26. I also performed a  
search for blazed trees dating to the age of the  
original survey. Several trees with blazes dating  
to the year of the original survey were recovered  
and tied as well as topography called for within  
the original survey notes. Utilizing the blazed  
trees and topography, I developed a search area for  
the missing corner to Sections 25, 26, 35 and 36.  
A search for evidence of the original corner reco-  
vered a stone, 20"x12"x4" with one groove on south  
and east sides of the stone. 5.9 feet to the east  
of the recovered stone I recovered a mound of stone  
4'x2' in size. I accept the stone as marking the  
original corner point and remonument this corner as  
later described within this narrative. With all  
the required controlling corners recovered and  
verified I proceeded to subdivide Section 35,  
establish corners and mark and post property lines  
as shown on the attached map of survey.

The work was performed utilizing a Wild T-2  
Theodolite and Wild D-I4 and Hewlett Packard  
Electronic Distance Meters.

Corners Accepted For Control

One-quarter corner to Sections 34 and 35, Township 39 South, Range 1 West.

At the corner point I found a standard Jackson County Surveyors brass cap  
monument marked:

Jackson County  
1980

35

1/4S

And the following references:

A 9-inch diameter fir bears N49°46'E, 17.20 feet distance with  
fragments of scribe marks visible.