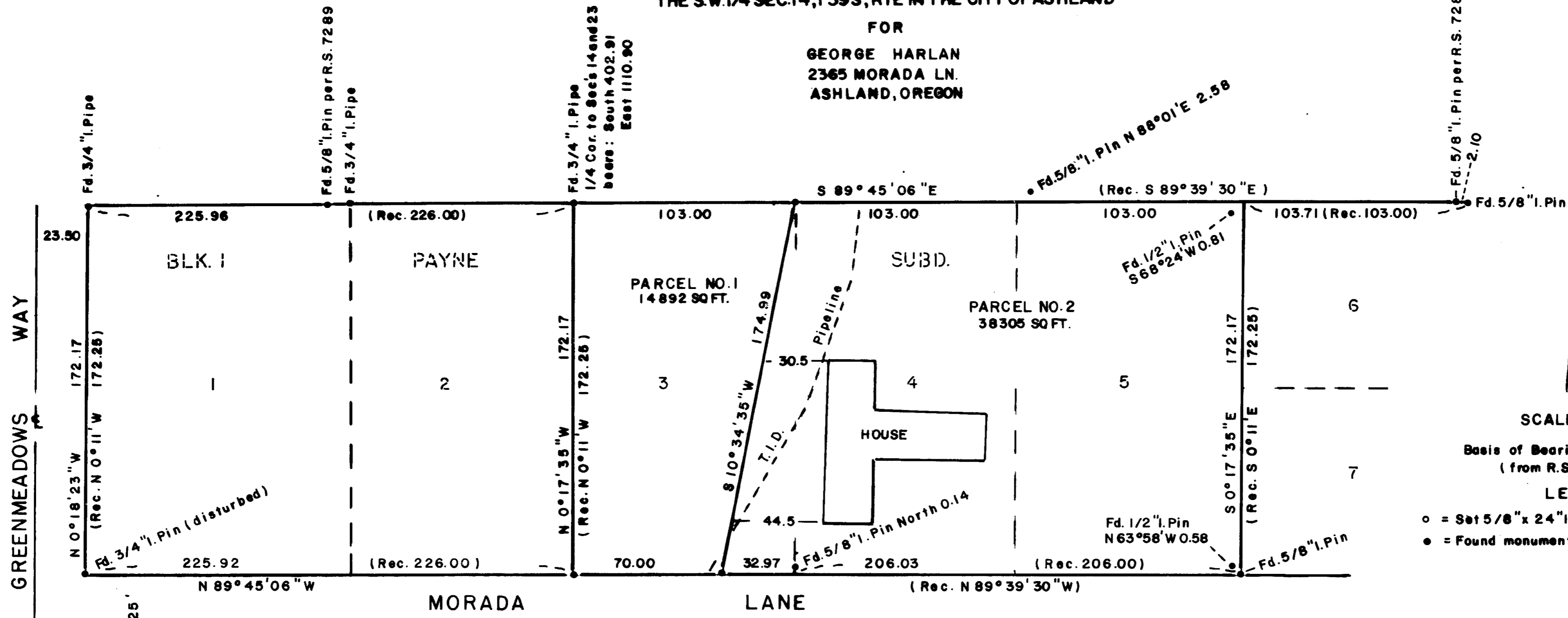


# MINOR LAND PARTITION

LOCATED IN LOTS 3, 4, 5, BLK. I PAYNE SUBD. IN THE S.W. 1/4 SEC. 14, T39S, R1E IN THE CITY OF ASHLAND

FOR  
GEORGE HARLAN  
2365 MORADA LN.  
ASHLAND, OREGON



SCALE 1" = 40'

Basis of Bearings N.O.A.A. True  
(from R.S. No. 7289)

### LEGEND

- = Set 5/8" x 24" I. Pin (tagged R.L.S 638)
- = Found monument as noted

Fd. brass disc in mon. case

Examined and approved by the Ashland Planning Commission this 12th day of March 1984 By: S. Spoush  
 PA. No. 83-98 Boundary Line Adjustment

All taxes, fees, assessments or other charges as required by O.R.S. 311.280 have been paid as of March 20 1984

Ray Stewart Director of Assessment and Taxation  
Helen Gordon Deputy

I, George R. Burrell, a duly Registered Professional Land Surveyor of the State of Oregon, hereby certify that this map correctly represents a survey made by me.

Feb. 21, 1984

Filed for record this the 20 day of March 1984 at 2:20 o'clock P and recorded in Volume 5 Page 168 of "MINOR LAND PARTITION" records of Jackson County, Oregon

Kathleen J. Barrett  
 County Clerk

Shirley Cook  
 Deputy

RECEIVED  
 Date 3/20/84 RvX  
 This survey is a copy of:  
 - [ ] plat  
 - [ ] map  
 - [ ] certificate  
 JACKSON COUNTY SURVEYOR

PROFESSIONAL  
 LAND SURVEYOR  
George Burrell  
 943  
 JACSON COUNTY, OREGON

SURVEY NO. 9906

SURVEY NARRATIVE TO COMPLY WITH O.R.S. 209.250

FOR: George Harlan  
2365 Morada Lane  
Ashland, Oregon

LOCATION: Block 1, PAYNE SUBD. in the S.W. 1/4 of Sec. 14, T39S, R1E

PURPOSE: To monument and describe two parcels according to conditions of approval of Minor Land Partition No. 83-98 (parent tract lots 3, 4, and 5, Blk. 1 of Payne Subd.).

PROCEDURE: The monuments found at the N.W. corner of lot 3, the S.E. corner of lot 5 and the S.E. corner of lot 3 were held as control in establishing the parent tract boundaries as shown on the accompanying map. The origin of the found 1/2" iron pins are unknown, however, I was informed by the client that the original monuments along the North boundary of lots 4 and 5 were destroyed by construction, and that an unknown surveyor established the 1/2" iron pins during the course of a unrecorded survey of lots 6 and 7. The boundary between parcel no. 1 and 2 was established according to conditions of City approval and the clients instructions.

BY: George Burrell, Land Surveyor  
1379 Brookdale  
Medford, Oregon Feb. 21, 1984

