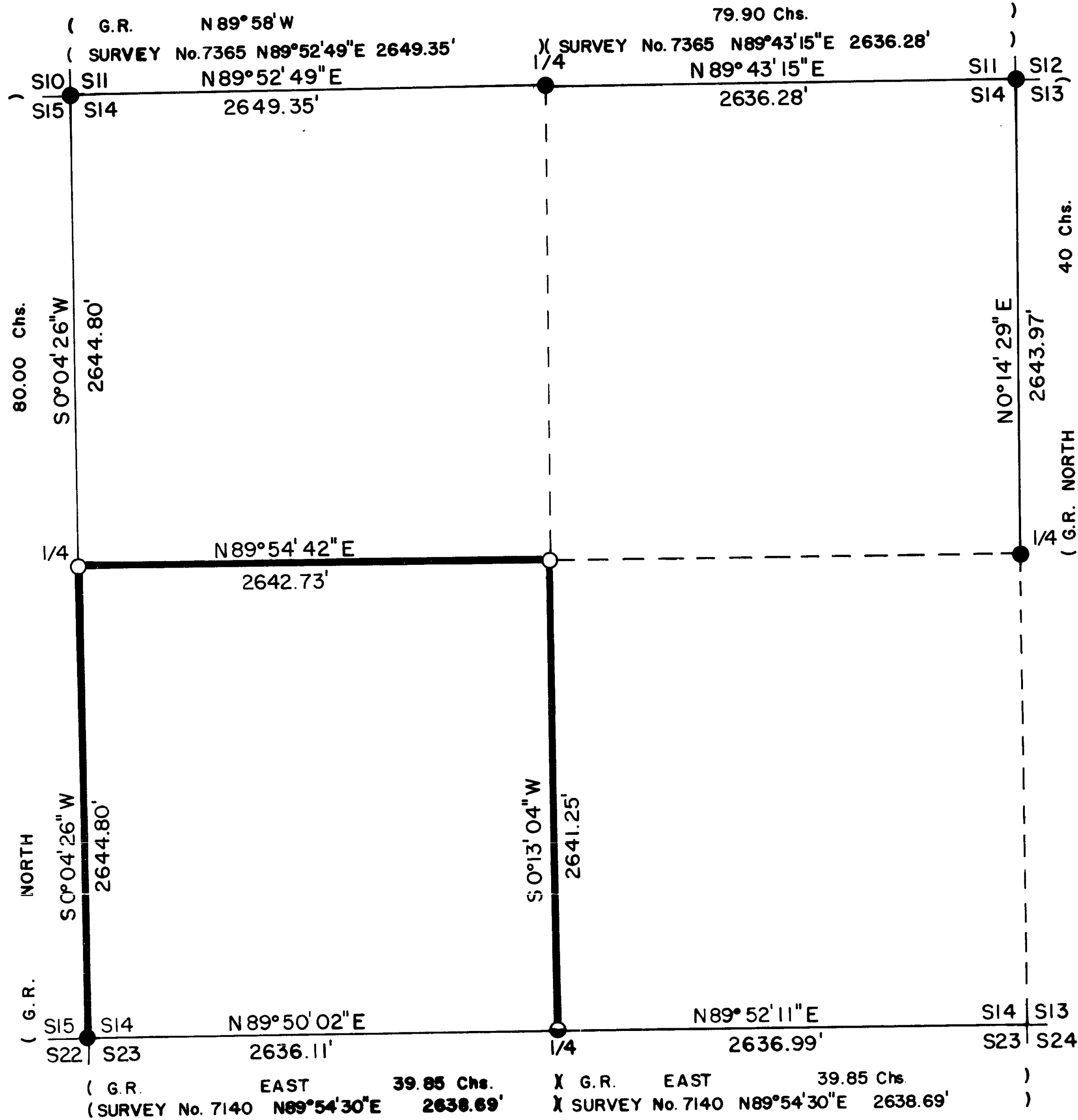
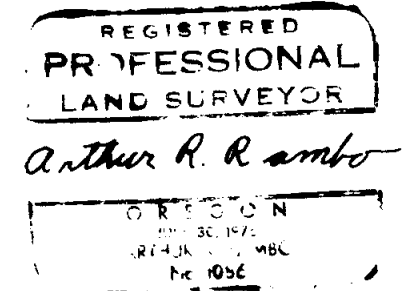


SI4 T35S R1E W.M.



CERTIFICATE OF SURVEY

I, ARTHUR R. RAMBO, REGISTRATION No. 1086 REGISTERED PROFESSIONAL LAND SURVEYOR STATE OF OREGON, HEREBY CERTIFY THAT THIS MAP CORRECTLY REPRESENTS A SURVEY MADE BY ME OR UNDER MY DIRECTION IN CONFORMANCE WITH THE LAWS OF THE STATE OF OREGON.



LEGEND

- SET 5/8" BY 30" REBAR WITH 1 1/2" ALUM. CAP
- FOUND COUNTY MONUMENT
- ◐ FOUND MONUMENT SET SURVEY No. 7140
- LINE POSTED AND BLAZED THIS SURVEY
- G.R. 1855 GOVERNMENT RECORD

BASIS OF BEARING

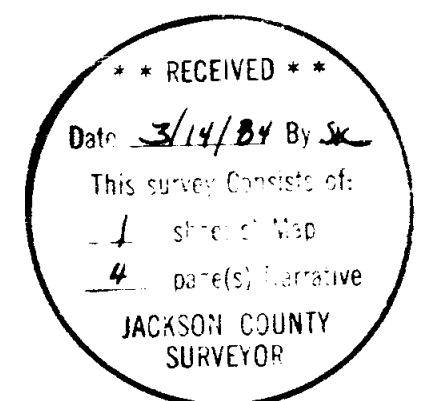
SURVEY No. 7365

SCALE

1" = 500'

DATE

MARCH 3, 1984



Corners Set This Survey:

All measurements are to the center of tree at lower face unless stated otherwise. All trees have a brass washer, marked LS 1086, nailed to lower face.

One quarter corner common to Section 14 and 15 Township 35 South Range 1 East. At the corner location I set a 5/8 by 30 inch rebar, exposed 6 inches in a mound of stone, with a 1 1/2 inch dia. alum. cap marked

T35S R1E
1/4
S15 + S14
LS 1086

From which:

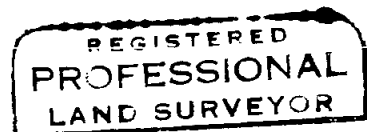
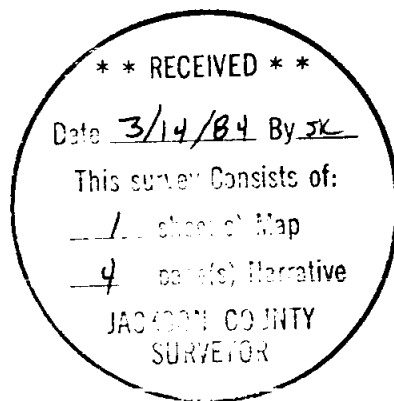
A 7 1/2 inch dia. Oak bears N51°22'W 23.5 feet marked E 1/4 S15 in upper face BT in lower face
An 11 inch dia. Oak bears S33°06'E 23.7 feet marked W 1/4 S14 in upper face BT in lower face

Center one quarter corner Section 14 Township 35 South Range 1 East. At the corner location I set a 5/8 by 30 inch rebar exposed 4 inches with a 1 1/2 inch dia. alum. cap marked

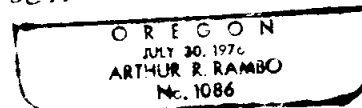
T35S R1E
C1/4 + S14
LS 1086

From which:

A 14 inch dia. Oak bears N62°47'W 66.7 feet marked C 1/4 S14 in upper face BT in lower face
A 30 1/2 inch dia. Madrona bears S6°50'W 55.4 feet marked C 1/4 S14 in upper face BT in lower face



Arthur R. Rambo



From which:

An 8 inch dia. Oak bears S27⁰28'W 47.7 feet with scribes visible in top blaze
 A 16 inch dia. Oak bears S75⁰08'W 84.4 feet with rotted out face
 An 11½ inch dia. Pine bears N30⁰47'W 122.3 feet with healed face
 A 22 inch dia. Oak bears N54⁰22'E 40.6 feet with BT in lower face
 One quarter corner common to section 11 and 14 Township 35 South Range 1 East. At the corner location I found a 2½ inch dia. brass cap on a 1¼ inch dia. iron pipe exposed 4 inches, marked

T35S R1E
 11
 1/4 S ____
 14
 Jackson County 1974

From which:

A Cedar post bears N48⁰E 0.7 feet marked 1/4S on East and West sides
 A 26 inch dia. Cedar bears N50⁰E 25.3 feet with scribes visible
 An 11 inch dia. Cedar bears N77⁰E 14.3 feet marked CS BT
 A 17 inch dia. Fir bears S54⁰E 33.0 feet with unopened face

Bearings to trees were taken with a staff compass, variation 19½⁰.

Section corner common to Section 13, 14, 23 and 24 Township 35 South Range 1 East. At the corner location I found a 2½ inch dia. brass cap, on a 1¼ inch dia. iron pipe exposed 5 inches, marked

T35S R1E
 14 | 13
 Sec. ____
 23 | 24
 C.S.
 1967

From which:

A North, South, and East fence intersection bears East 1.3 feet
 A 39½ inch dia. Pine bears N8⁰51'E 26.9 feet to face chopped open no scribe visible
 A 4.4 foot dia. Fir stump bears S29⁰23'E 44.9 feet to face healed over
 A 26½ inch dia. Pine bears N46⁰00'W 153.1 feet to face with scribes visible
 An 11½ inch dia. Pine stub broken off at upper face bears S84⁰35'W 36.4 feet to face marked BT
 A 15 inch dia. Fir bears N8⁰49'W 43.9 feet with healed face
 A 15 inch dia. Madrona bears N40⁰35'E 30.6 feet marked S in partly healed upper face BT in lower face
 A 6½ inch dia. Cedar bears S15⁰31'E 25.2 feet marked CS in upper face BT in lower face
 A 10½ inch dia. Fir bears S37⁰04'W 26.1 feet with healed faces

From which:

An 11 inch dia. Madrona bears S56°31'W 3.7 feet marked S14 T35S R1E PS787
 An 11 inch dia. Madrona bears N24°33'W 33.8 feet marked S11 T35S R1E PS787 BT
 A 7 inch dia. Madrona bears N70°09'E 24.6 feet marked S12 T35S R1E
 An 11½ inch dia. Madrona bears S35°52'E 15.75 feet marked S13 T35S R1E PS787 BT

One quarter corner common to Section 13 and 14 Township 35 South Range 1 East. At the corner location I found a 2½ inch dia. brass cap on a 1 inch dia. iron pipe Jackson County monument marked

T35S R1E
 1/4 14 | 13 Cor
 |
 C.S.
 1967

From which:

A 16¼ inch dia. Fir bears N18°34'W 10.2 feet with healed faces
 A 17½ inch dia. Fir bears S39°59'E 21.9 feet with healed faces

One quarter corner common to Section 14 and 23 Township 35 South Range 1 East. At the corner location I found a 1½ inch dia. alum. cap on a 5/8 inch dia. rebar in a mound of stone marked

LS 1086
 S14
 1/4 +
 S23
 T35S R1E

From which:

A 12 inch dia. Yellow Pine bears S7°24'W 104.4 feet marked 1/4S23 LS1086 BT
 A 13 inch dia. White Oak bears N47°12'W 107.3 feet marked 1/4S14 LS1086 BT

Section corner common to Sections 14, 15, 22 and 23 Township 35 South Range 1 East. At the corner location I found a 2½ inch dia. brass cap on a 1 inch dia. iron pipe in a mound of stone, Jackson County monument marked

T35S R1E
 S15 | S14
 S22 | S23
 Jackson County 1974

From which:

A 12 inch dia. W. Oak bears N10°38'W 18.5 feet
 A 19 inch dia. Oak bears N43°07'E 60.2 feet
 An 11 inch dia. Oak bears N58°21'E 52.4 feet
 A 7¼ inch dia. Oak bears S46°35'E 32.1 feet
 A 19 inch dia. Oak bears S19°02'W 35.25 feet
 A 14 inch dia. Pine bears S50°05'W 15.8 feet

Section corner common to sections 10, 11, 14, and 15 Township 35 South Range 1 East. At the corner location I found a 2½ inch dia. brass cap on a 1¼ inch dia. iron pipe 28 inches above ground in a mound of stone Jackson County monument marked

T35S R1E
 Sec. 10 | 11
 15 | 14 Cor
 C.S.
 1967

Survey Narrative to Comply with Paragraph 209.250 O.R.S.

Survey For: Medford Resources Corporation
P. O. Box 550
Medford, Oregon 97501

Survey By: Arthur R. Rambo PLS 1086
P. O. Box 133
Butte Falls, Oregon 97522

Location: Southwest one-quarter of Section 14 Township 35 South,
Range 1 East Willamette Meridian Jackson Co. Oregon

Purpose: To mark and post the property lines of M.R.C. land in the
Southwest quarter of said section as shown on the map to
accompany this narrative.

Date: March 3, 1984

Basis of Bearing: Survey Number 7365

Procedure: A search of the records revealed that the original survey
of this section was completed by Ives and Hyde under
Contract No. 47 dated August 18, 1854. All the corners,
except the West 1/4 corner, needed for control of this
survey had been re-established from original evidence or
by proportionate measurement.

I ran a random line traverse beginning at the Northeast
section corner from Survey #7365, then proceeding to the
East 1/4 corner, then to the South 1/4 corner, then to
the Southwest corner, then to the Northwest corner closing
to Survey #7365. The exterior lines were then calculated.
I measured a different distance for the West half of the
South line than was indicated on Survey #7140, so I ran a
random line closed traverse from the South 1/4 corner to
the Southeast corner closing back to the South 1/4 corner.
The South 1/4 corner was found to be set within tolerance
and accepted for this survey. A position for the West
1/4 corner was calculated and a search was made for original
evidence, but no evidence of the corner could be found.
The West 1/4 corner was set by proportionate measurement
on this survey. The subdivision of the section was then
calculated and the interior lines were ran closing to the
exterior lines as shown on the map to accompany this report.

Corners found and accepted:

All measurements to trees are to center of tree at lower
face unless otherwise stated.

Section corner common to sections 11, 12, 13 and 14
Township 35 South Range 1 East. At the corner location
I found a 2-1/2 inch dia. lead filled reducer, on a
1-1/4 inch dia. iron pipe exposed 12 inches, marked

T35S R1E
S11|S12
S14|S13
1969
PS 787

A 10 inch by 7 inch by 14 inch stone with an X on top
is lying along side of pipe