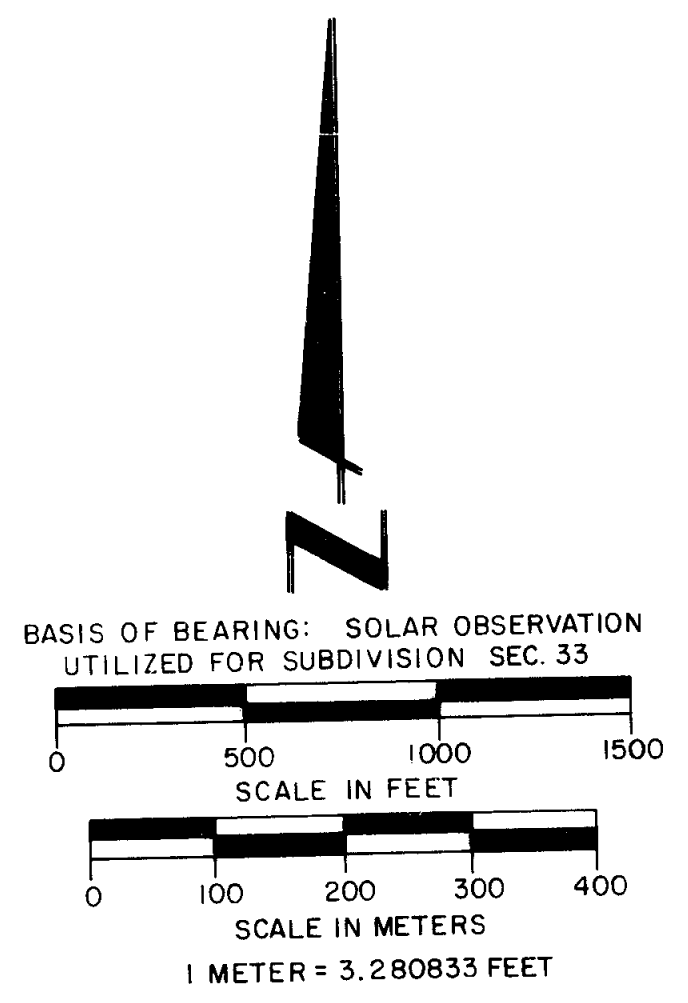
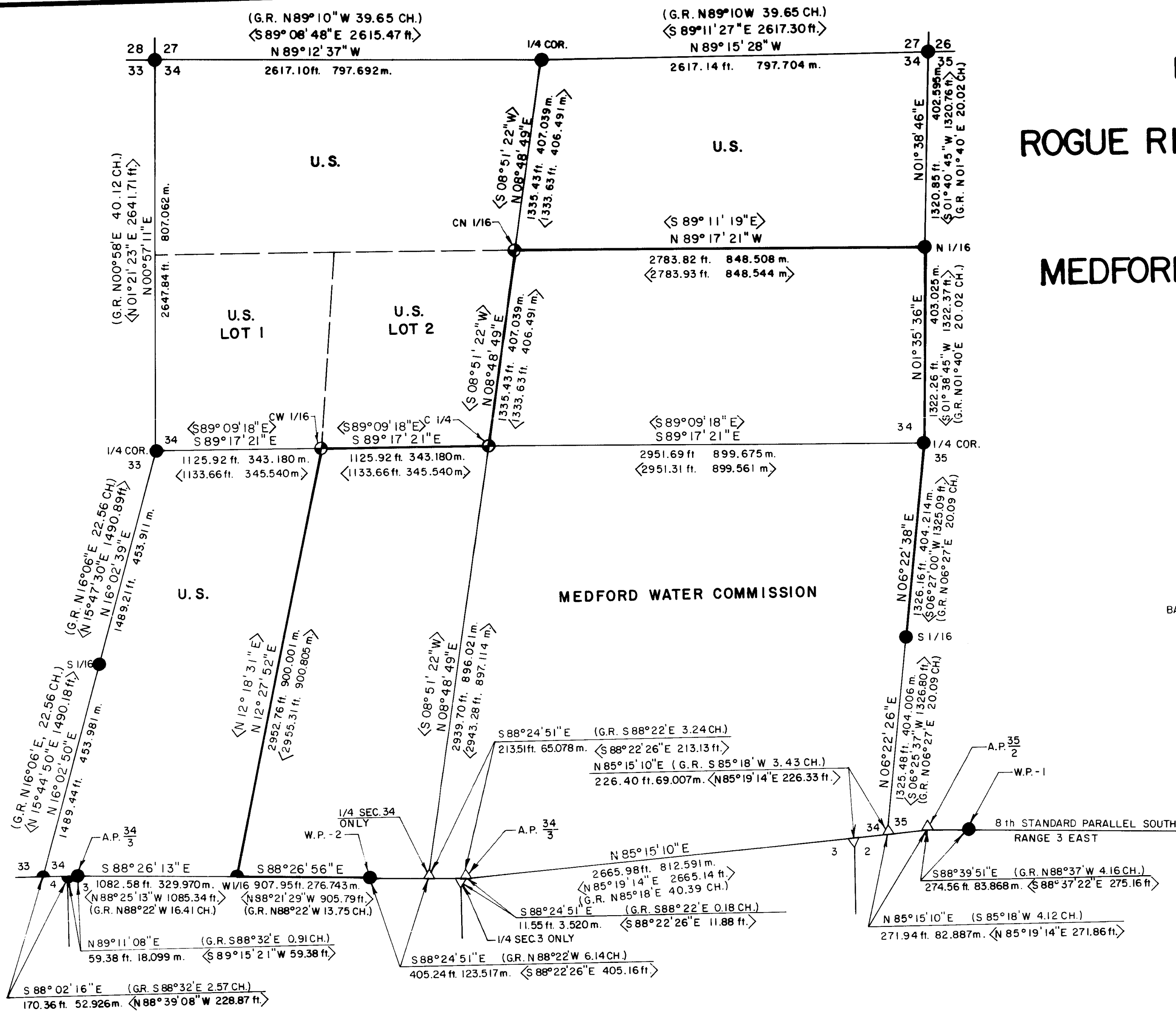


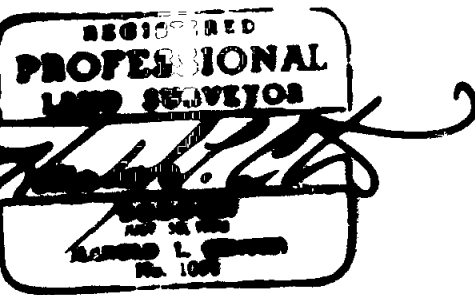
**AMENDED
MAP OF SURVEY
FOR
ROGUE RIVER NATIONAL FOREST
P.O. BOX 520
MEDFORD, OREGON
and
MEDFORD WATER COMMISSION
FEBRUARY , 1984**



NOTE: THIS SURVEY AMENDS RECORD SURVEY No 8185 AND WAS PERFORMED AS A RESULT OF CERTAIN CORNER POSITIONS BEING ADJUSTED BY THE B.L.M. FOLLOWING COMPLETION OF RECORD SURVEY NO. 8185.

CERTIFICATE OF SURVEY

I, Harold L. Center, Registration No. 1071 Registered Professional Land Surveyor, State of Oregon, hereby certify that this map correctly represents a survey made by me or under my direction in conformance with laws of the State of Oregon, at the request of the U.S. Forest Service.



** RECEIVED **
Date 3/26/84 By SLC
This survey consists of:
1 sheet(s) Map
6 parcel(s) Narrative
JACKSON COUNTY
SURVEYOR

HISTORY OF SURVEYS

Establishment of the Eighth Standard Parallel South, Range 3 East, was performed by Deputy Surveyor Nathaniel Ford under Contract No. 58 dated April 18, 1855.
Subdivisions of Township 35 South, Range 3 East, were performed by Deputy Surveyor Nathaniel Ford under contract No. 58 dated April 18, 1855.
The south boundary of Section 34 was resurveyed by Rufus S. Moore under contract No. 475 dated July 3, 1883.
A dependent resurvey of the Eighth Standard Parallel South, Range 3 East, and portions of Township 35 South, Range 3 East, was performed by Cadastral Surveyor Ronald Shirler of the BLM Western Field Office during 1977 and 1978, with the results of that survey officially approved on May 26, 1983.
Harold L. Center, Registered Professional Land Surveyor No. 1071, performed a dependent resurvey and section subdivision of Section 34 dated Feb. 15, 1980 and filed as Record Survey No. 8185.
No other surveys of record were noted.

LEGEND

- FOUND STANDARD BLM OR COUNTY SURVEYOR BRASS CAP MONUMENT, UNLESS OTHERWISE NOTED.
- ⊙ RESET PREVIOUSLY ESTABLISHED 2-1/2" DIA. X 30" LG. IRON POST WITH 2-1/2" DIA. BRASS CAP, UNLESS OTHERWISE NOTED.
- PROPERTY LINE MARKED AND POSTED THIS SURVEY.
- SECTION LINES CALCULATED FROM TRAVERSE SURVEY.
- - - - DENOTES GOVERNMENT LOTTING.
- ◇ DENOTES R.S. 8185 RECORD.
- △ COMPUTED POINT ONLY; NO MON.; SITUATED BELOW HIGH WATER.

U.S. DEPARTMENT OF AGRICULTURE FOREST SERVICE REGION 6 ROGUE RIVER NATIONAL FOREST	
DEPENDENT RESURVEY AND SECTION SUBDIVISION SECTION 34, T. 35 S., R. 3 E., W.M. JACKSON COUNTY, OREGON	
REVIEWED BY: <u>W. J. McNeill</u>	DATE <u>3/8/84</u>
REVIEWED BY: <u>R. J. Hathaway</u>	DATE <u>3/9/84</u>
PROJECT 84-24	

I removed my previously established monument and reset said monument to the corner point represented by this survey. At the corner point I set a 2 1/2 inch diameter galvanized iron post with a 2 1/2 inch diameter brass cap marked:

T35S R3E
W 1/16

C ——— C
LS 1071
1984
1980

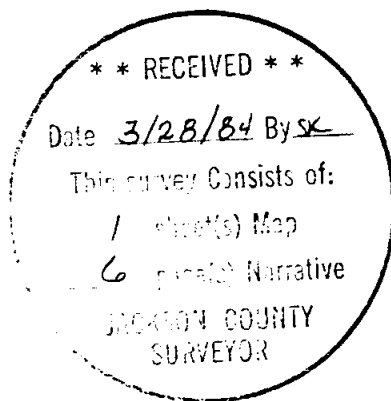
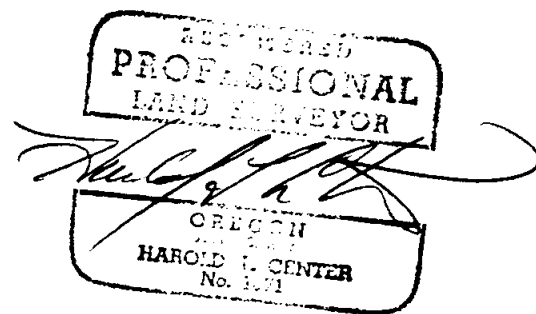
And the following references:

A 10-inch diameter fir bears S36°12'E, 18.80 feet distance, scribed CW 1/16 S34 LS1071 BT.

A 15-inch diameter fir bears N73°37'W, 48.80 feet distance with a healed blaze.

February 24, 1984

HAROLD L. CENTER
Registered Professional Land Surveyor
Oregon Certificate No. 1071



And the following references:

A 21-inch diameter pine bears N12°09'E, 77.90 feet distance with a healed blaze.

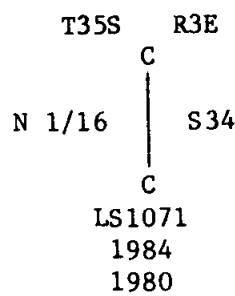
An 8-inch diameter pine bears S13°38'E, 14.90 feet distance with a healed blaze.

Corners Established This Survey

Note: The following corner points were established by me as part of Record Survey No. 8185. Monuments established as part of that survey were adjusted to conform to the points as described within this survey. 1984 was added to the monument and old reference trees tied and new trees marked as required.

Center-north one-sixteenth corner Section 34, Township 35 South, Range 3 East.

I removed my previously established monument and reset said monument to the corner point represented by this survey. At the corner point I set a 2 1/2 inch diameter galvanized iron post with a 2 1/2 inch diameter brass cap marked:



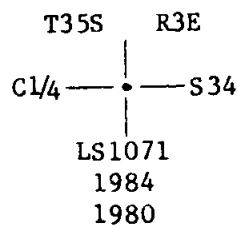
And the following references:

A 13-inch diameter pine bears N73°19'W, 30.98 feet distance with a partially healed face.

An 11-inch diameter pine bears N85°11'E, 33.55 feet distance with a partially healed face.

Center one-quarter corner Section 34, Township 35 South, Range 3 East.

I removed my previously established monument and reset said monument to the corner point represented by this survey. At the corner point I set a 2 1/2 inch diameter galvanized iron post with a 2 1/2 inch diameter brass cap marked:



And the following references:

A 9-inch diameter pine bears N25°02'E, 26.65 feet distance with a partially healed blaze.

A 14-inch diameter fir bears N49°03'W, 49.00 feet distance, scribed C1/4 S34 LS1071 BT.

Center-west one-sixteenth corner Section 34, Township 35 South, Range 3 East.

U.S. Dept. of Interior
 Unlawful to Disturb
 T35S R3E
 N 1/16
 S34 | S35
 1977
 Bureau of Land Management
 Cadastral Surveys

And the following references:

A 16-inch diameter fir bears N60°37'W, 3.20 feet distance with a healed blaze.

A 14-inch diameter fir bears S42°42'E, 23.20 feet distance with a partially healed blaze.

Section corner to Sections 26, 27, 34 and 35, Township 35 South, Range 3 East.

At the corner point I found a standard Bureau of Land Management brass cap monument marked:

U.S. Dept. of Interior
 Unlawful to Disturb
 T35S R3E
 S27 | S26
 S34 | S35
 1966
 Cadastral Surveys
 Bureau of Land Management

And the following references:

An 11-inch diameter fir bears N42°20'W, 47.30 feet distance with a healed blaze.

A 20-inch diameter pine bears N11°25'W, 29.50 feet distance with a healed blaze.

An 18-inch diameter fir bears S51°38'E, 24.60 feet distance with a healed blaze.

A 25-inch diameter fir bears S50°22'W, 23.40 feet distance with a healed blaze.

A 13-inch diameter fir bears S82°12'W, 35.10 feet distance with a healed blaze.

One-quarter corner to Sections 27 and 34, Township 35 South, Range 3 East.

At the corner point I found a standard Bureau of Land Management brass cap monument marked:

U.S. Dept. of Interior
 Unlawful to Disturb
 T35S R3E
 1/4 $\frac{S27}{S34}$
 1977
 Cadastral Surveys
 Bureau of Land Management

And the following references:

A 17-inch diameter fir bears N83°17'W, 12.00 feet distance with a healed blaze.

An 11-inch diameter fir bears N10°51'W, 60.03 feet distance with a healed blaze. This tree now dead.

A 20-inch diameter fir bears S26°40'E, 50.30 feet distance, with a healed blaze.

South one-sixteenth corner to Sections 34 and 35, Township 35 South, Range 3 East.

At the corner point I found a standard Bureau of Land Management brass cap monument marked:

U.S. Dept. of Interior
Unlawful to Disturb
T35S R3E
S 1/16
S34 | S35
1977
Cadastral Surveys
Bureau of Land Management

And the following references:

A 6-inch diameter fir bears N67°14'E, 25.41 feet distance with a healed blaze.

An 18-inch diameter fir bears N58°39'W, 41.29 feet distance with a healed blaze.

One-quarter corner common to Sections 34 and 35, Township 35 South, Range 3 East.

At the corner point I found a standard Bureau of Land Management brass cap monument marked:

U.S. Dept. of Interior
Unlawful to Disturb
T35S R3E
1/4
S34 | S35
1966
Bureau of Land Management
Cadastral Surveys

And the following references:

An 18-inch diameter fir bears S60°36'E, 51.00 feet distance with a healed blaze.

An 11-inch diameter fir bears N83°23'W, 8.80 feet distance with a healed blaze.

North one-sixteenth corner to Sections 34 and 35, Township 35 South, Range 3 East.

At the corner point I found a standard Bureau of Land Management brass cap monument marked:

Corners Described This Survey:

West one-sixteenth corner to Section 34, Township 35 South, Range 3 East.

At the corner point I found a standard BLM monument marked:

U.S. Dept. of Interior
Unlawful to Disturb

W 1/16 S34

1977

Cadastral Surveys
Bureau of Land Management

And the following references:

An 8-inch diameter fir bears N36°22'E, 7.40 feet distance with a healed blaze.

A 9-inch diameter fir bears N40°07'E, 30.70 feet distance with a healed blaze.

Witness point no. 2 on the west side of Willow Creek Reservoir originally established by Surveyor C. Z. Boyden and reestablished by the BLM in 1977.

At the corner point I found a standard BLM monument marked:

U.S. Dept. of Interior
Unlawful to Disturb

W. P.

T35S R3E

S34

S3

T36S

1977

Cadastral Surveys
Bureau of Land Management

And the following references:

A 13-inch diameter fir bears N16°01'E, 46.40 feet distance with a healed blaze.

A 9-inch diameter fir bears S32°48'E, 25.90 feet distance with a healed blaze.

Witness point no. 1 on the east side of Willow Creek Reservoir originally established by Surveyor C. Z. Boyden and remonumented by the BLM in 1977.

At the corner point I found a standard BLM brass cap monument marked:

U.S. Dept. of Interior
Unlawful to Disturb

W. P.

T35S R3E

S35

S2

T36S

1977

Cadastral Surveys
Bureau of Land Management

SURVEY NARRATIVE TO COMPLY WITH
PARAGRAPH 209.250 OREGON REVISED STATUTES

SURVEY FOR: Rogue River National Forest
P. O. Box 520
Medford, OR 97501

and

Medford Water Commission
Medford City Hall, Room 286
Medford, OR 97501

LOCATION: Section 34, Township 35 South, Range 3 East,
Willamette Meridian, Jackson County, Oregon.

BASIS OF BEARING: Solar observation - Bearings are based on solar
observation utilized for survey of Section 33.

PURPOSE: To monument property corners and mark and post
mutual property lines separating Medford Water
Commission and National Forest lands.

SPECIAL NOTE: This survey amends Record Survey No. 8185. This
corrective resurvey is due to the adjustment in
controlling corner positions by the Bureau of Land
Management following the filing of Record Survey
No. 8185.

PROCEDURE: Performed a closed traverse which began with my
traverse control for Section 33 at the southwest
corner of Section 34. From this control I ran a
random line traverse counterclockwise around the
south, east and north lines of Section 34 closing
my traverse to my control for Section 33 at the
northwest corner of Section 34. From this traverse
control I ran from the north one-sixteenth corner
on the east line adjacent to the interior lines
closing to my traverse control at the west one-
sixteenth corner on the south line.

Corners Accepted For Control

The following corners were described within Record Survey No. 9744 and were found as described within that narrative and will not be redescribed within this narrative.

Section corner common to Sections 27, 28, 33 and 34, Township 35 South, Range 3 East.

One-quarter corner to Sections 33 and 34, Township 35 South, Range 3 East.

South one-sixteenth corner to Sections 33 and 34, Township 35 South, Range 3 East.

Section corner to Sections 33 and 34, Township 35 South, Range 3 East, and Section 4, Township 36 South, Range 3 East.

Closing section corner to Sections 3 and 4, Township 36 South, Range 3 East, and Section 34, Township 35 South, Range 3 East.

Angle point on the 8th standard parallel south Range 3 East, for Section 34, Township 35 South, Range 3 East, and Section 3, Township 36 South, Range 3 East.