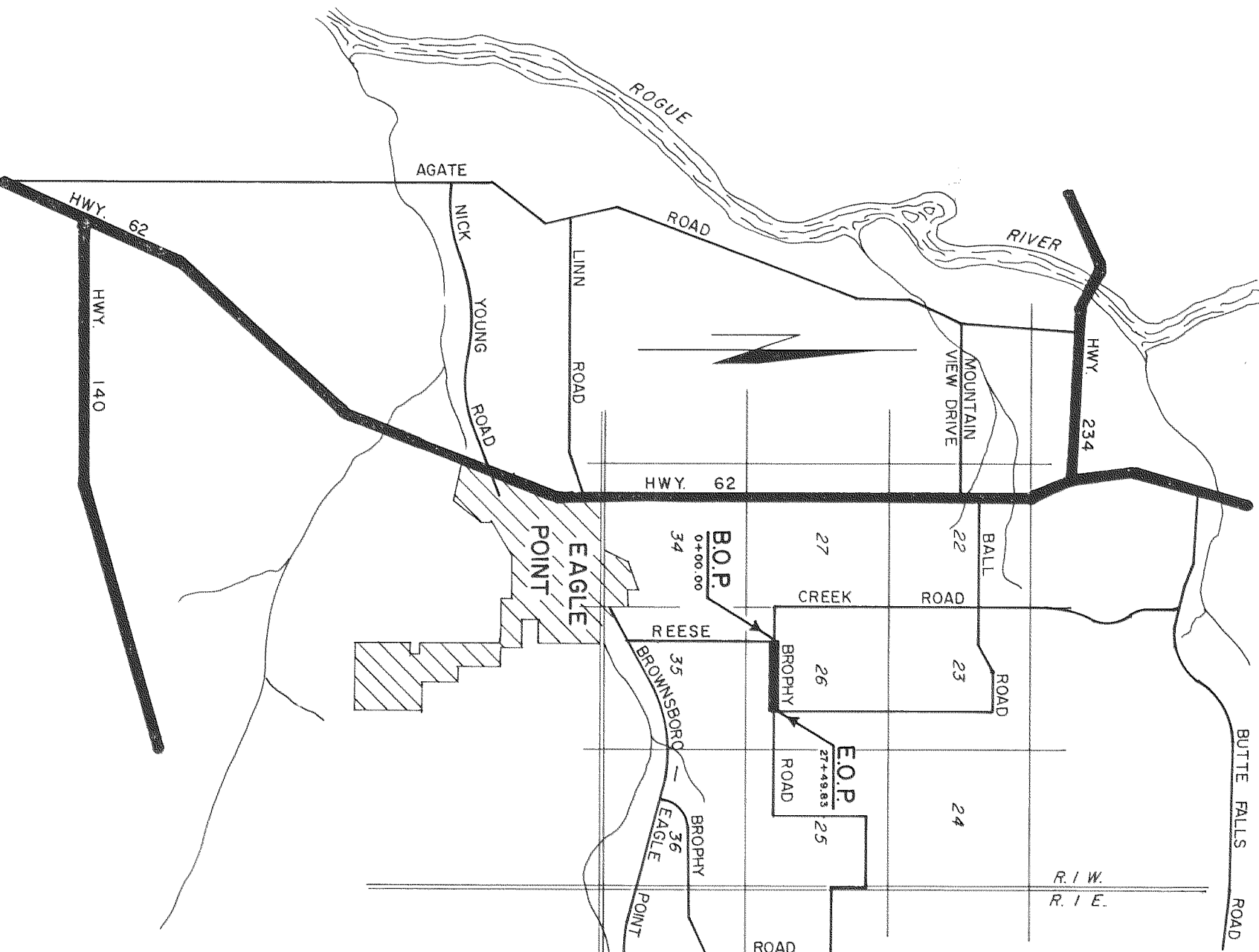


**BROPHY ROAD**

**REESE CREEK ROAD — BALL ROAD**

JACKSON COUNTY  
FEBRUARY 1984  
SCALE: 1" = 50'



- Indicates set 5/8" x 3/32" iron pin with yellow plastic cap marked "Jackson Co. Public Works". 9' ground post. All pins are of right angles to centerline and set 1" exposed, unless otherwise noted.
- Indicates existing iron pin unless otherwise noted.
- Indicates bearings. Recorded Survey number 6649.
- Basis of bearing: To define the boundaries of the road right of way owned by Jackson County.
- Procedure: Established Engineers Certificate. All coordinates based on 1984 Department of Public Works survey.
- Right of Way: Acquired by application proceedings. See Commissioners Journal. Survey completed: February, 1984.

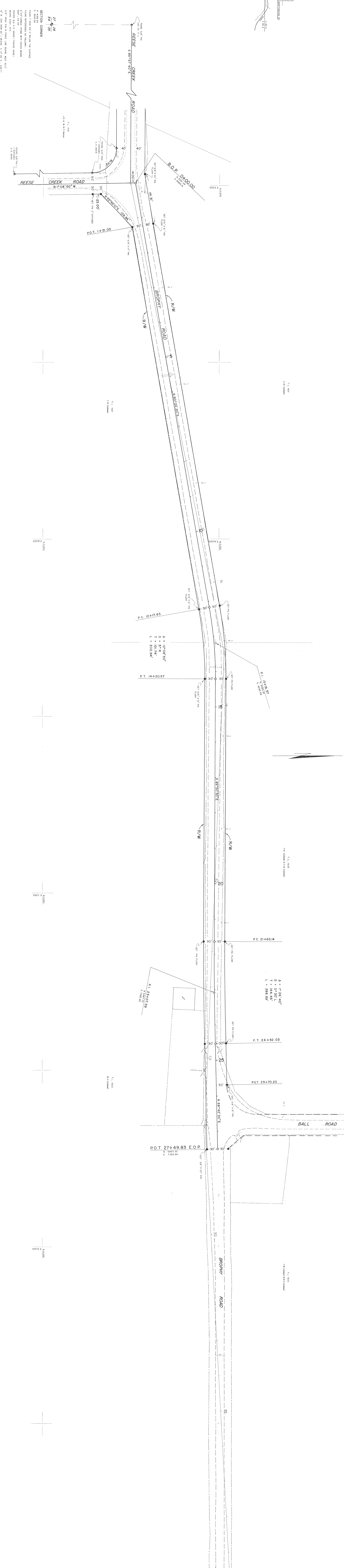
**REGISTERED PROFESSIONAL LAND SURVEYOR**

*William J. Gaudin*

No. 2246/6/44  
JACKSON COUNTY  
OREGON

WILLIAM J. GAUDIN  
ASSISTANT COUNTY ENGINEER  
WHITE CITY, OREGON

**SECTION 26, T. 35 S., R. 1 W., W. M.**



SECTION CORNER  
27 26  
24 35

RESESE CREEK ROAD  
N 17° 08' 50" W  
P.O.T. 14+21.00  
P.C. 12+17.63  
P.T. 14+20.57  
P.C. 21+63.14  
P.T. 24+82.03  
P.O.T. 25+70.20  
P.O.T. 27+49.83 E.O.P.

RESESE CREEK ROAD  
N 17° 08' 50" W  
P.O.T. 14+21.00  
P.C. 12+17.63  
P.T. 14+20.57  
P.C. 21+63.14  
P.T. 24+82.03  
P.O.T. 25+70.20  
P.O.T. 27+49.83 E.O.P.

RESESE CREEK ROAD  
N 17° 08' 50" W  
P.O.T. 14+21.00  
P.C. 12+17.63  
P.T. 14+20.57  
P.C. 21+63.14  
P.T. 24+82.03  
P.O.T. 25+70.20  
P.O.T. 27+49.83 E.O.P.

RESESE CREEK ROAD  
N 17° 08' 50" W  
P.O.T. 14+21.00  
P.C. 12+17.63  
P.T. 14+20.57  
P.C. 21+63.14  
P.T. 24+82.03  
P.O.T. 25+70.20  
P.O.T. 27+49.83 E.O.P.

RESESE CREEK ROAD  
N 17° 08' 50" W  
P.O.T. 14+21.00  
P.C. 12+17.63  
P.T. 14+20.57  
P.C. 21+63.14  
P.T. 24+82.03  
P.O.T. 25+70.20  
P.O.T. 27+49.83 E.O.P.

RESESE CREEK ROAD  
N 17° 08' 50" W  
P.O.T. 14+21.00  
P.C. 12+17.63  
P.T. 14+20.57  
P.C. 21+63.14  
P.T. 24+82.03  
P.O.T. 25+70.20  
P.O.T. 27+49.83 E.O.P.

RESESE CREEK ROAD  
N 17° 08' 50" W  
P.O.T. 14+21.00  
P.C. 12+17.63  
P.T. 14+20.57  
P.C. 21+63.14  
P.T. 24+82.03  
P.O.T. 25+70.20  
P.O.T. 27+49.83 E.O.P.

RESESE CREEK ROAD  
N 17° 08' 50" W  
P.O.T. 14+21.00  
P.C. 12+17.63  
P.T. 14+20.57  
P.C. 21+63.14  
P.T. 24+82.03  
P.O.T. 25+70.20  
P.O.T. 27+49.83 E.O.P.

RESESE CREEK ROAD  
N 17° 08' 50" W  
P.O.T. 14+21.00  
P.C. 12+17.63  
P.T. 14+20.57  
P.C. 21+63.14  
P.T. 24+82.03  
P.O.T. 25+70.20  
P.O.T. 27+49.83 E.O.P.

RESESE CREEK ROAD  
N 17° 08' 50" W  
P.O.T. 14+21.00  
P.C. 12+17.63  
P.T. 14+20.57  
P.C. 21+63.14  
P.T. 24+82.03  
P.O.T. 25+70.20  
P.O.T. 27+49.83 E.O.P.