

JACKSON COUNTY 98 833

DEPARTMENT OF PUBLIC WORKS

BUTLER CREEK ROAD

INTERSTATE 5 — EAST VALLEY VIEW ROAD

FEBRUARY 1984

SCALE: 1" = 50'

1. Butler Creek Road is 207' from the centerline of Interstate 5, as shown on the plan view. The centerline of Interstate 5 is shown as a dashed line.

2. Butler Creek Road is shown as a solid line. The centerline of Butler Creek Road is shown as a dashed line.

3. The plan view shows the location of Butler Creek Road relative to Interstate 5 and the City of Ashland. The City of Ashland is shown as a shaded area.

4. The plan view shows the location of Butler Creek Road relative to the City of Ashland. The City of Ashland is shown as a shaded area.

5. The plan view shows the location of Butler Creek Road relative to the City of Ashland. The City of Ashland is shown as a shaded area.

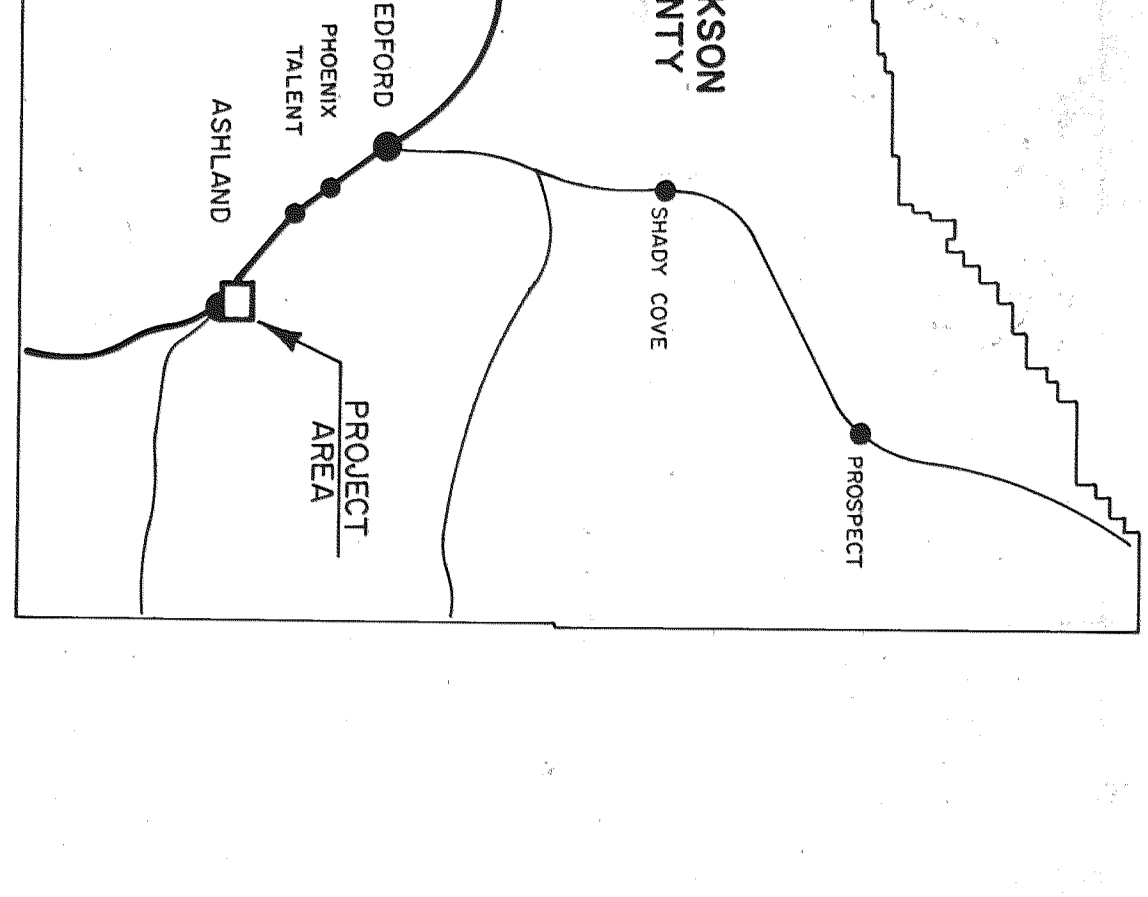
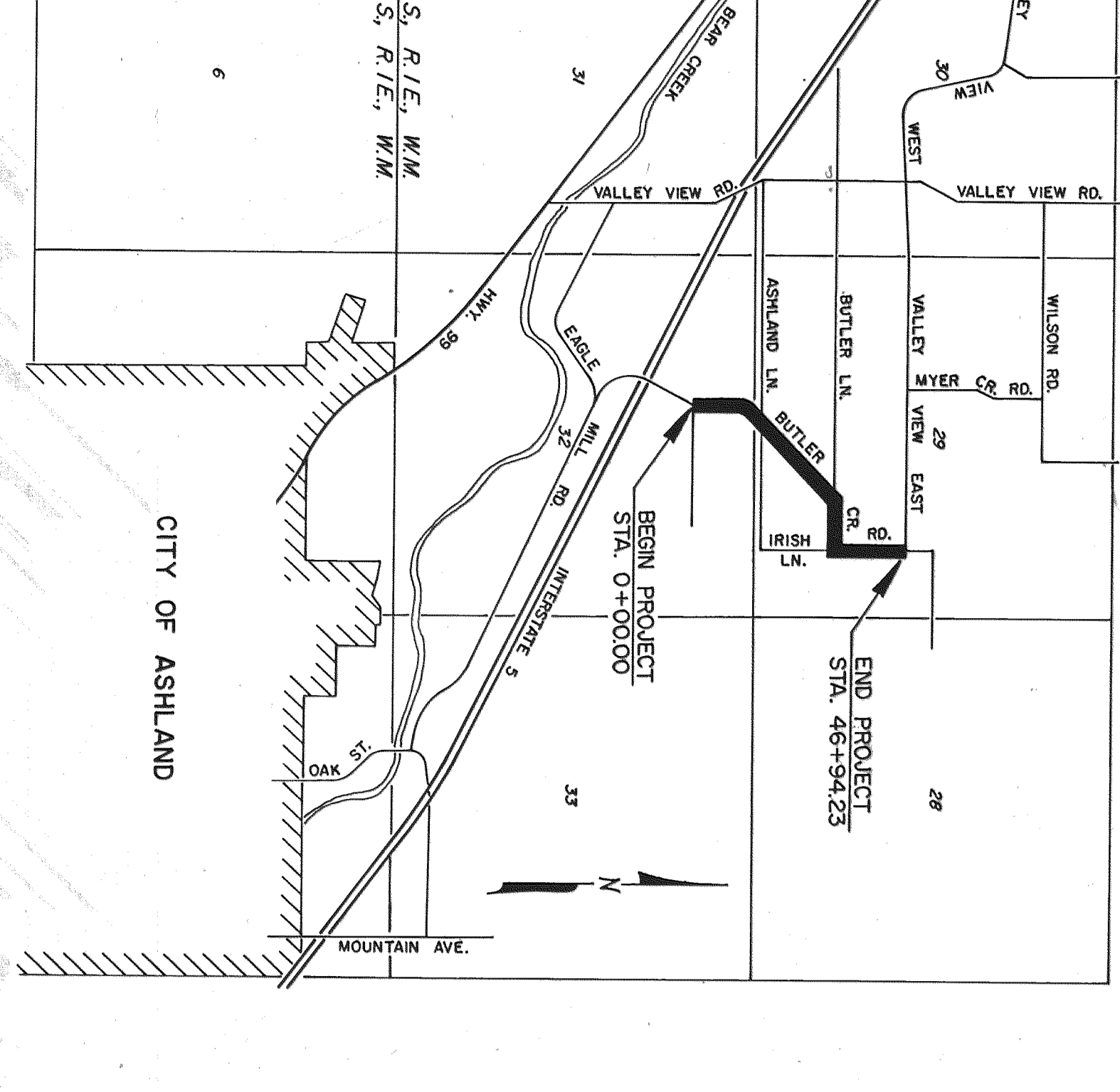
6. The plan view shows the location of Butler Creek Road relative to the City of Ashland. The City of Ashland is shown as a shaded area.

7. The plan view shows the location of Butler Creek Road relative to the City of Ashland. The City of Ashland is shown as a shaded area.

8. The plan view shows the location of Butler Creek Road relative to the City of Ashland. The City of Ashland is shown as a shaded area.

9. The plan view shows the location of Butler Creek Road relative to the City of Ashland. The City of Ashland is shown as a shaded area.

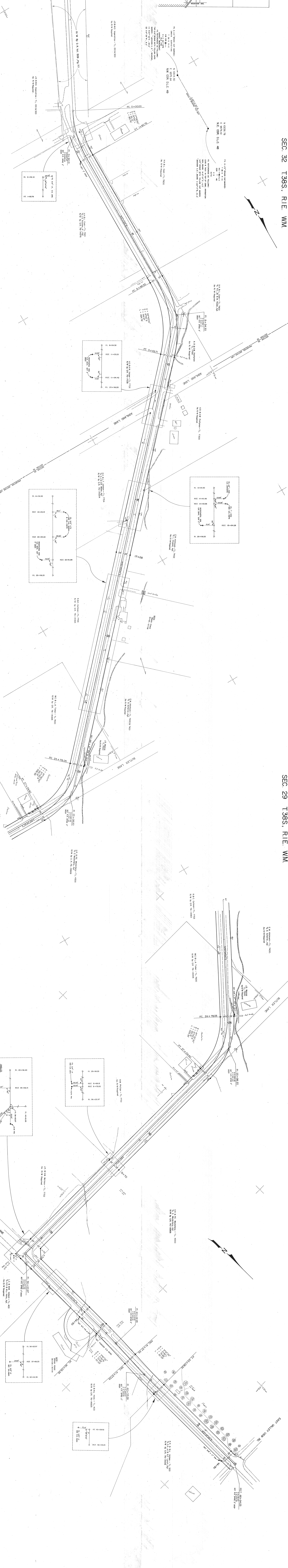
10. The plan view shows the location of Butler Creek Road relative to the City of Ashland. The City of Ashland is shown as a shaded area.



PROFESSIONAL ENGINEER
 WILLIAM J. SIBBS
 445 WEST 200 AVENUE ROOM 200
 ASHLAND, OREGON 97101

PROFESSIONAL ENGINEER
 WILLIAM J. SIBBS
 445 WEST 200 AVENUE ROOM 200
 ASHLAND, OREGON 97101

PROFESSIONAL ENGINEER
 WILLIAM J. SIBBS
 445 WEST 200 AVENUE ROOM 200
 ASHLAND, OREGON 97101



SEC. 29 T38S, R1E, WM.