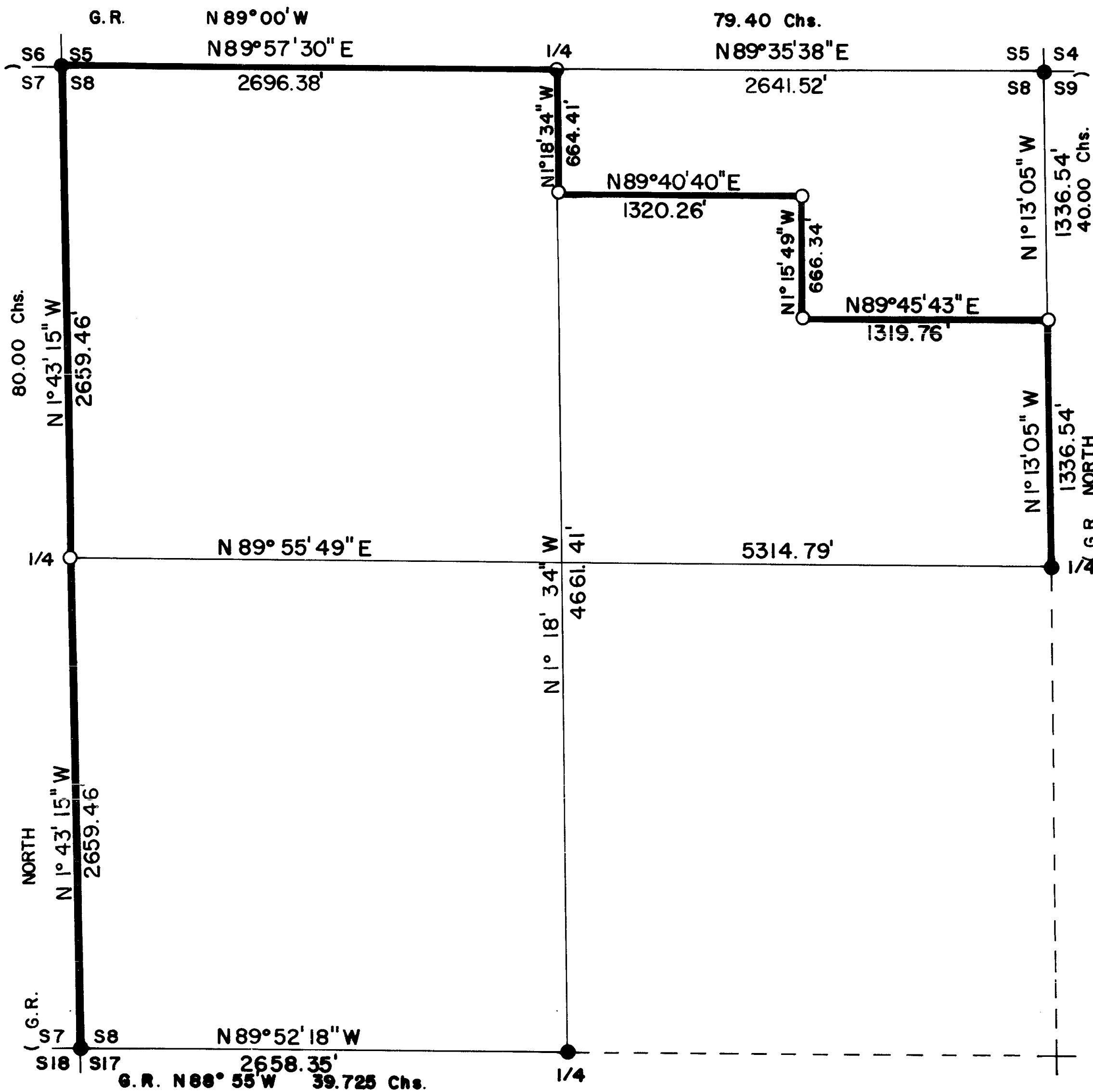
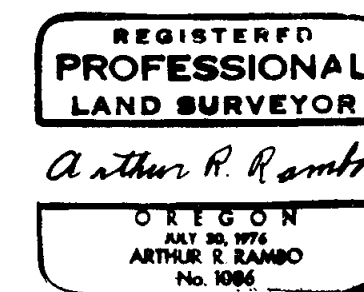


S8 T34S R3E W.M.



CERTIFICATE OF SURVEY

I, ARTHUR R. RAMBO, REGISTRATION No. 1086 REGISTERED PROFESSIONAL LAND SURVEYOR STATE OF OREGON, HEREBY CERTIFY THAT THIS MAP CORRECTLY REPRESENTS A SURVEY MADE BY ME OR UNDER MY DIRECTION IN CONFORMANCE WITH THE LAWS OF THE STATE OF OREGON.



LEGEND

- SET 5/8" BY 30" REBAR WITH 1 1/2" ALUM. CAP
- FOUND STANDARD BLM MONUMENT
- ◐ FOUND COUNTY MONUMENT
- G.R. 1884 GOVERNMENT RECORD
- LINE POSTED AND BLAZED THIS SURVEY

BASIS OF BEARING

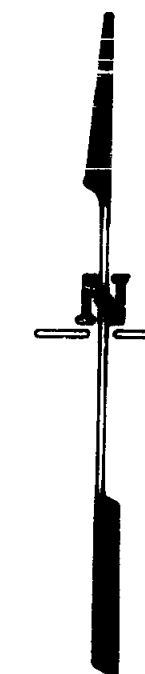
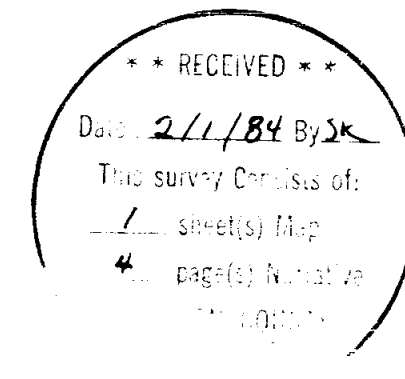
SOLAR OBSERVATION

SCALE

1" = 500'

DATE

JANUARY 23, 1984

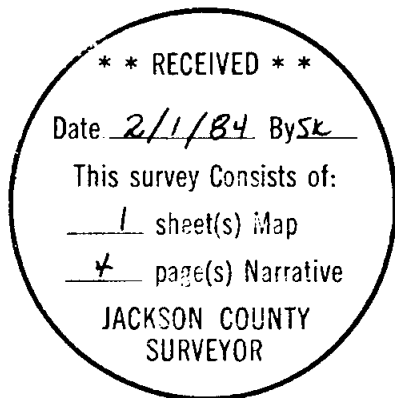


North one-sixteenth corner common to Section 8 and 9 Township 34 South Range 3 East Willamette Meridian. At the corner location I set a 5/8" by 30" rebar exposed 4 inches with a 1-1/2 inch dia. Alum. Cap marked

T34S R3E
N 1/16
S8 S9
LS 1086

From Which

A 10-1/2 inch dia. Fir bears $N82^{\circ}35'E$ 11.5 feet marked N 1/16 S9 in upper blaze BT in lower blaze
An 8-1/2 inch dia. Chinquapin bears $S22^{\circ}59'W$ 20.6 feet marked N 1/16 S8 in upper blaze BT in lower blaze



Arthur R. Rambo



Corners set at this Survey

All measurements to bearing trees are to the center of tree at lower blaze unless otherwise stated. All bearing trees have a Brass washer stamped LS 1086 nailed to lower blaze.

One-quarter corner common to Section 7 and 8 Township 34 South Range 3 East Willamette Meridian. At the corner location I set a 5/8" by 30" rebar with a 1-1/2" Alum. Cap marked

T34S R3E
1/4
S7 + S8
LS 1086

From Which

A 7 inch dia. Fir bears $S4^{\circ}59'W$ 40.0 feet marked
1/4 S7 upper blaze BT lower blaze
An 8 inch dia. Madrona bears $N13^{\circ}21'E$ 28.8 feet
marked 1/4 S8 upper blaze BT lower blaze

Center North North one-sixtyfourth corner Section 8 Township 34 South Range 3 East Willamette Meridian. At the corner location I set a 5/8" by 30" rebar in a mound of stone with a 1-1/2 inch dia. Alum. Cap marked

T34S R3E
C-N-N
S8 + 1/64
LS 1086

From Which

A 5 inch dia. Cedar bears $S72^{\circ}03'W$ 28.7 feet marked
C N N 1/64 S8 in upper blaze BT in lower blaze
A 5 inch dia. Fir bears $N47^{\circ}04'E$ 42.2 feet marked
C N N 1/64 S8 in upper blaze BT in lower blaze

Center North Northeast one-sixtyfourth corner Section 8 Township 34 South Range 3 East Willamette Meridian. At the corner location I set a 5/8" by 30" rebar with a 1-1/2 inch dia. Alum. Cap marked

T34S R3E
C-N-NE
S8 + 1/64
LS 1086

From Which

A 10 inch dia. Pine bears $S6^{\circ}00'E$ 35.4 feet marked
C N NE 1/64 S8 in upper blaze BT in lower blaze
A 6-1/2 inch dia. Pine bears $N54^{\circ}35'E$ 15.0 feet
marked C N NE 1/64 S8 in upper blaze BT in lower
blaze

Northeast one-sixteenth corner Section 8 Township 34 South Range 3 East Willamette Meridian. At the corner location I set a 5/8" by 30" rebar in a mound of stone with a 1-1/2 inch dia. Alum. Cap marked

T34S R3E
S8 + NE1/16
LS 1086

From Which

An 8-1/2 inch dia. Pine bears $N23^{\circ}55'E$ 7.3 feet marked
NE 1/16 S8 in upper blaze BT in lower blaze
A 14 inch dia. Fir bears $N37^{\circ}25'W$ 10.3 feet marked
NE 1/16 S8 in upper blaze BT in lower blaze

One-quarter corner common to Section 8 and 9 Township 34 South Range 3 East Willamette Meridian. At the corner location I found a stone marked 1/4 beside a standard Bureau of Land Management monument, exposed 6 inches marked

1/4
S8 | S9
T34S R3E
1964

From which

- An 18 inch dia. Fir bears S41⁰01'12"W 5.7 feet with an unopened face
- A 17 inch dia. Fir stump bears N86⁰46'27"E 12.75 feet with reverse scribes
- A 10 inch dia. Pine stump bears N64⁰E 46.1 feet marked 1/4 S9 BT

Section corner common to Section 4, 5, 8, and 9 Township 34 South Range 3 East Willamette Meridian. At the corner location I found a standard Bureau of Land Management monument exposed 7 inches marked

T34S R3E
S5 | S4
S8 | S9
1964

From Which

- A 17 inch dia. Sugar Pine bears S13⁰56'W 13.2 feet with unopened face
- A 26½ inch dia. Fir bears S53⁰56'E 12.3 feet with BT visible in chopped out face
- An 11 inch dia. Hemlock bears S79⁰23'E 44.2 feet with unopened face
- An 11 inch dia. Fir bears N44⁰27'E 21.5 feet with unopened face
- An 11½ inch dia. Fir on ground bears N60⁰59'W 53.9 feet to root

One-quarter corner common to Section 5 and 8 Township 34 South Range 3 East Willamette Meridian. At the corner location I found a 2½ inch dia. Brass disc on a 1½ inch dia. iron pipe exposed 12 inches in a mound of stone Jackson Co. monument marked

T34S R3E
1/4 S $\frac{5}{8}$
CS
1982

From Which

- A 5½ inch dia. Cedar bears S3⁰36'E 13.6 feet marked CS in upper face BT in lower face
- A 6½ inch dia. Yew bears N58⁰49'E 21.7 feet marked CS in upper face BT in lower face
- A 22 inch dia. Fir stub bears N34⁰10'W 23.8 feet marked 1/4S in upper face BT in lower face

Section corner common to Section 5, 6, 7, and 8 Township 34 South Range 3 East Willamette Meridian. At the corner location I found a standard Bureau of Land Management monument marked

T34S R3E
S6 | S5
S7 | S8
1964

From Which

- A 15½ inch dia. Fir bears N19⁰03'W 52.8 feet with unopened face
- A 26½ inch dia. Fir bears N73⁰12'E 108.3 feet with unopened face
- Original stone lying alongside of iron post

9840

Survey Narrative to Comply with ORS 209.250

Location: Section 8 Township 34 South Range 3 East Willamette Meridian

Survey For: Medford Corporation
P. O. Box 550
Medford, Oregon 97501

Survey By: Arthur R. Rambo PLS 1086
331 Bluff Street
Butte Falls, Oregon 97522

Purpose: To blaze and post the West line, the West half of the North line, and the interior lines of the Northeast quarter of Section 8 as shown on the plat to accompany this report.

Procedure: A search of the records revealed that all of the corners needed for control of this survey, except for the West one-quarter corner, had been re-established from original evidence. I ran a random line closed traverse around the exterior of the section tying to the corners needed for control of this survey. I was unable to find any evidence of the West one-quarter corner, a position for this corner was calculated by proportionate measurement and set on this survey. The subdivision of this section was then calculated and the interior lines needed were ran closing to the exterior line.

Basis of Bearing: Solar observation near the Northwest Corner

Date:

Corners found and accepted for control of this survey:

Section corner common to Sections 7, 8, 17, and 18 Township 34 South Range 3 East. At the corner location I found a standard Bureau of Land Management monument marked

| | |
|------|-----|
| T34S | R3E |
| S7 | S8 |
| S18 | S17 |
| 1964 | |

From Which

- A 15 inch dia. Fir bears S76°00'48"W 34.9 feet with unopened face
- A 21 inch dia. Fir bears S44°20'39"E 33.1 feet with iron marks visible in chopped out face
- A 19 inch dia. Fir bears N47°58'27"E 32.3 feet with unopened face
- A 20 inch dia. Cedar bears N10°37'45"W 30.7 feet marked 34S R3E S7 BT

One-quarter corner common to Section 8 and 17 Township 34 South Range 3 East Willamette Meridian. At the corner location I found a standard Bureau of Land Management monument, exposed 8 inches in a mound of stone, marked

| | |
|------|-----|
| T34S | R3E |
| S8 | |
| 1/4 | |
| S17 | |
| 1964 | |

From Which

- A 23 inch dia. Fir bears S12°47'48"E 56.4 feet with an unopened face
- A 16 inch dia. Fir bears N15°25'33"W 13.1 feet with an unopened face