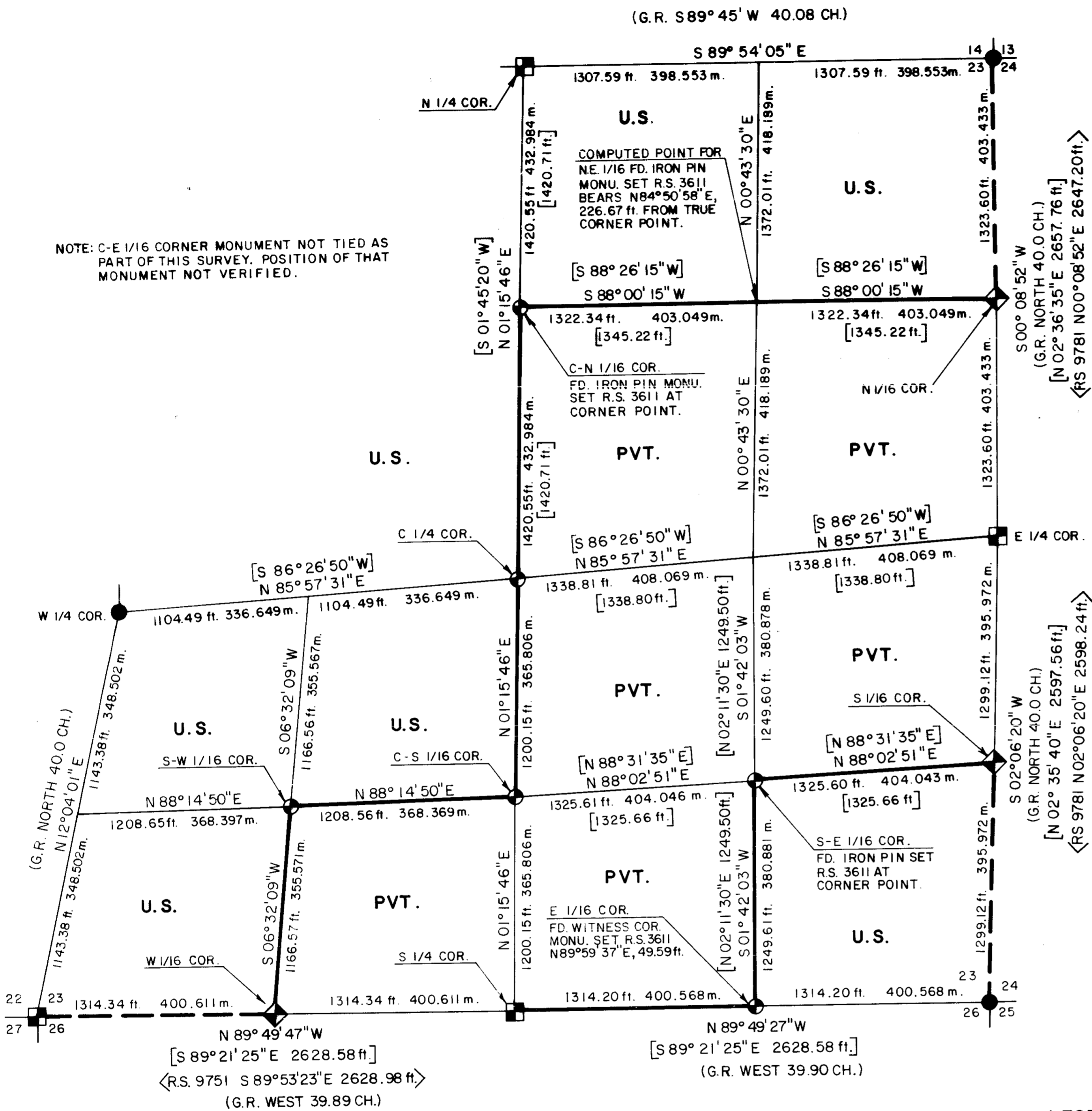
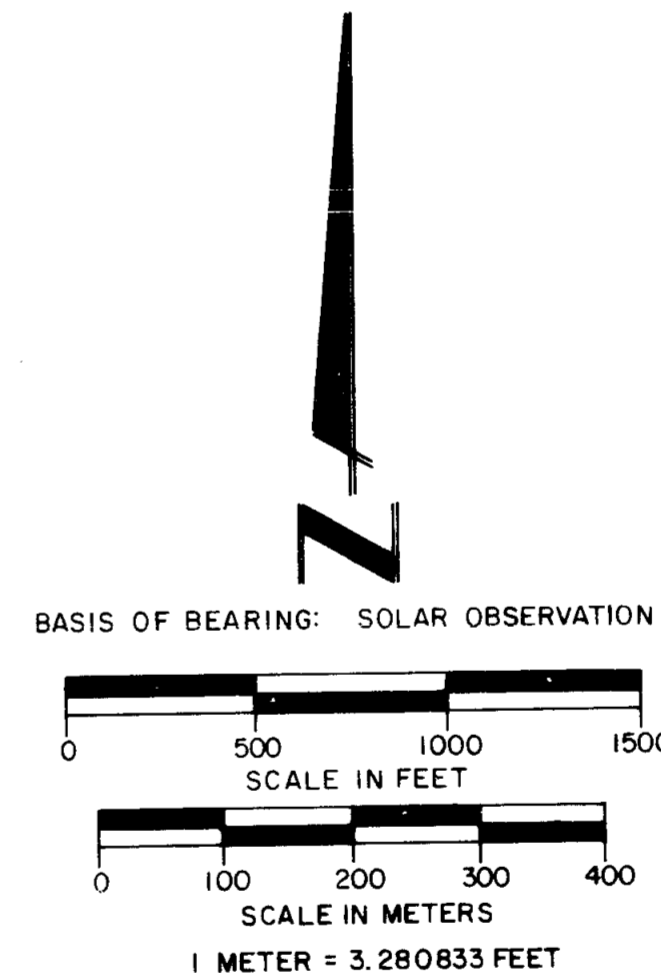


MAP OF SURVEY
FOR
ROGUE RIVER NATIONAL FOREST
P.O. BOX 520
MEDFORD, OREGON
NOV. 17, 1983



NOTE: C-E 1/16 CORNER MONUMENT NOT TIED AS PART OF THIS SURVEY. POSITION OF THAT MONUMENT NOT VERIFIED.



HISTORY OF SURVEYS

The original boundaries of Section 23 were established by Wm. M. Turner, Deputy Surveyor under Contract No. 455 dated July 17, 1882.

Controlling corners were remonumented from original corner evidence by the Bureau of Land Management, Division of Cadastral Surveys, the Jackson County Surveyor or Charles H. Hurst Registered Professional Land Surveyor No. 483.

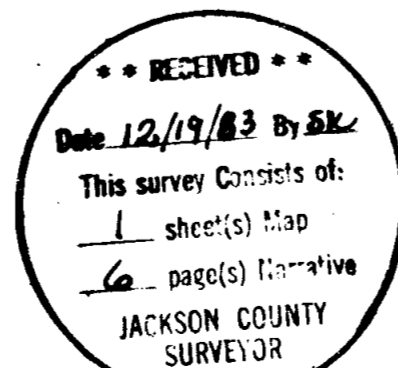
Charles H. Hurst, Registered Professional Land Surveyor No. 483 performed a dependent resurvey and section subdivision of Section 23 (Reference Jackson County Surveyor File Record Survey No. 3611) and established certain corners within that Section.

Harold L. Center, Registered Professional Land Surveyor No. 1071 performed a dependent resurvey of the East line of Section 23 and the West half of the South line of Section 23 (Reference Jackson County Surveyor file Record Survey No. 9781 and 9751) and established and reestablished certain corners within that section.

No other surveys of record were noted.

CERTIFICATE OF SURVEY

I, Harold L. Center, Registration No. 1071 Registered Professional Land Surveyor, State of Oregon, hereby certify that this plat correctly represents a survey made by me or under my direction in conformance with the laws of the State of Oregon, at the request of the U.S. Forest Service.



LEGEND

- SET 2 1/2" x 3" LG IRON POST WITH 2 1/2" DIA. BRASS CAP.
- FOUND STANDARD BLM OR COUNTY SURVEYOR BRASS CAP MONUMENT UNLESS OTHERWISE NOTED.
- FOUND MONUMENT SET PLS 483 REFERENCE RECORD SURVEY 3611.
- ◆ FOUND BRASS CAP MONUMENT SET PLS 1071 REFERENCE RECORD SURVEY 9781.
- SECTION LINE CALCULATED FROM TRAVERSE SURVEY.
- PROPERTY LINE PREVIOUSLY MARKED & POSTED.
- PROPERTY LINE MARKED AND POSTED.
- () DENOTES GOVERNMENT RECORD.
- [] DENOTES RECORD SURVEY 3611.
- <> DENOTES RECORD SURVEYS 9781 & 9751.

U.S. DEPARTMENT OF AGRICULTURE
FOREST SERVICE
REGION 6 ROGUE RIVER NATIONAL FOREST

**DEPENDENT RESURVEY
AND
SECTION SUBDIVISION
SECTION 23, T. 37S., R. 3E., W.M.
JACKSON COUNTY, OREGON**

REVIEWED BY: *[Signature]* DATE: 12/12/83
REVIEWED BY: *[Signature]* DATE: 12-14-83
PROJECT 83-21

And the following references:

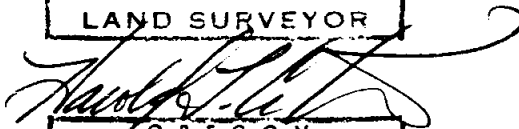
A 17-inch diameter pine bears N81°37'E, 29.10 feet distance, scribed SW 1/16 S23 LS1071 BT.

A 24-inch diameter fir bears N23°23'E, 16.24 feet distance, scribed SW 1/16 S23 LS1071 BT.

November 17, 1983

HAROLD L. CENTER
Registered Professional Land Surveyor
Oregon Certificate No. 1071

REGISTERED
PROFESSIONAL
LAND SURVEYOR

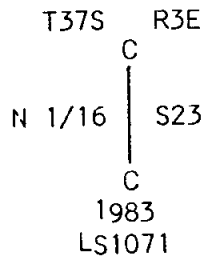


OREGON
HAROLD L. CENTER
JULY 30, 1976
No. 1071

** RECEIVED **
Date 12/19/83 By SK
This survey consists of:
1 sheet(s) Map
6 paragraph Narrative
JACKSON COUNTY
SURVEYOR

Center north one-sixteenth corner Section 23, Township 37 South, Range 3 East.

At the corner point I found a 5/8 inch diameter iron pin established by Charles H. Hurst, Registered Professional Land Surveyor (reference Record Survey No. 3611), directly over said iron pin I set a 2 1/2 inch diameter galvanized iron post with a 2 1/2 inch diameter brass cap marked:



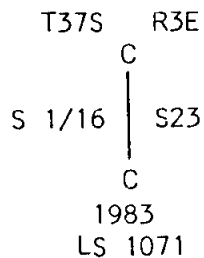
And the following references:

A 14-inch diameter fir bears S52°06'W, 25.96 feet distance with a healed blaze.

A 9-inch diameter oak bears N78°44'E, 5.80 feet distance with a healed blaze.

Center south one-sixteenth corner Section 23, Township 37 South, Range 3 East.

At the corner point I set a 2 1/2 inch diameter galvanized iron post with a 2 1/2 inch diameter brass cap marked:



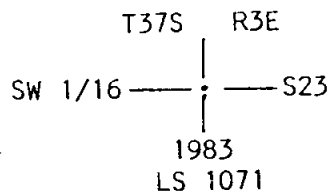
And the following references:

A 19-inch diameter fir bears N21°11'E, 13.80 feet distance, scribed S 1/16 S23 LS1071 BT.

A 17-inch diameter fir bears S78°16'W, 5.00 feet distance, scribed S 1/16 S23 LS1071 BT.

Southwest one-sixteenth corner Section 23, Township 37 South, Range 3 East.

At the corner point I set a 2 1/2 inch diameter galvanized iron post with a 2 1/2 inch diameter brass cap marked:



At the true corner point I set a 2½ inch diameter galvanized iron post with a 2½ inch diameter brass cap in a mound of stone and cement with brass cap marked:

T37S R3E
 E 1/16 $\frac{S23}{S26}$
 1983
 LS 1071

And the following references:

A 19-inch diameter fir bears S46°15'W, 116.97 feet distance, scribed E 1/16 S26 LS1071 BT.

A 17-inch diameter fir bears N31°56'E, 50.20 feet distance, scribed E 1/16 S23 LS1071 BT.

A 5/8 inch diameter iron pin marked as previously described bears N89°59'37"E, 49.59 feet distance.

Center one-quarter corner Section 23, Township 37 South, Range 3 East.

After a diligent search I am unable to locate any trace of the monument established by Surveyor Hurst at this corner point. I do recover both of the bearing trees established by Hurst and utilize those accessories to reference this corner. At the corner point I set a 2½ inch diameter galvanized iron post with a 2½ inch diameter brass cap marked:

T37S R3E
 C1/4 S23
 1983
 LS 1071

And the following references:

A 22-inch diameter fir bears N02°06'E, 56.26 feet distance with a healed blaze.

A 20-inch diameter fir bears S37°07'W, 35.78 feet distance with a healed blaze.

Southeast one-sixteenth corner Section 23, Township 37 South, Range 3 East.

At the corner point I found a 5/8 inch diameter iron pin established by Charles H. Hurst, Registered Professional Land Surveyor No. 483 (reference Record Survey No. 3611). I find the monument driven 2 inches below ground level and marked SE 1/16 on North and RS483 on South. I find this monument correctly positioned and directly over the top of said monument I set a 2½ inch diameter galvanized iron post with 2½ inch diameter brass cap marked:

T37S R3E
 SE 1/16 S23
 1983
 LS 1071

And the following references established by Hurst:

A 12-inch diameter cedar bears S54°72'E, 13.90 feet distance, scribe E 1/16 483 BT visible.

A 12-inch diameter cedar bears N56°58'W, 5.1 feet distance with a healed blaze.

T37S R3E

1/4 — $\frac{S14}{S23}$ —

RS483 1967

And the following references:

A 54-inch diameter fir bears S49°22'E, 26.00 feet distance, scribe visible. This tree is dead.

A 19-inch diameter fir bears S04°35'E, 63.95 feet distance with a healed blaze.

A 29-inch diameter pine bears N71°01'E, 50.84 feet distance with a healed blaze.

One-quarter corner to Sections 22 and 23, Township 37 South, Range 3 East.

At the corner point I found a standard Bureau of Land Management brass cap monument marked:

U.S Dept. of Interior
Unlawful to Disturb
1/4
S22 | S23
T37SR3E
1961
Cadastral Surveys
Bureau of Land Management

And the following references:

A 40-inch diameter fir bears S64°58'E, 57.90 feet distance with a healed blaze.

A 19-inch diameter fir bears N72°41'W, 42.60 feet distance with a healed blaze. This tree now dead.

A 36-inch diameter cedar bears N65°24'W, 15.10 feet distance, scribe visible. This tree now dead.

And a new reference established this survey:

A 40-inch diameter fir bears S39°26'W, 45.82 feet distance. Scribed 1/4 S22 LS1071 BT.

East one-sixteenth corner to Sections 23 and 26, Township 37 South, Range 3 East.

I find this corner point referenced by a witness corner monument which I find to be a 5/8 inch diameter iron pin flattened and marked on the east RS483 and on the west E-16. I find this monument situated at N89°59'37"E, 49.59 feet distance from the true corner position. This monument established by Charles H. Hurst, Registered Professional Land Surveyor No. 483, reference Record Survey No. 3611.

And the following references:

A 25-inch diameter fir bears N43°40'E, 23.46 feet distance, scribe visible. This tree is now dead.

A 22-inch diameter fir bears S84°01'E, 14.69 feet distance with a healed blaze.

Corners Accepted For Control

The following corner points were utilized as controlling corners for my survey of Sections 24 and 26, and were fully described within the narratives for those surveys and will not be redescribed within this narrative.

Section corner to Sections 13, 14, 23 and 24, Township 37 South, Range 3 East.

North one-sixteenth corner Sections 23 and 24, Township 37 South, Range 3 East.

One-quarter corner Sections 23 and 24, Township 37 South, Range 3 East.

South one-sixteenth corner Sections 23 and 24, Township 37 South, Range 3 East.

Section corner to Sections 23, 24, 25 and 26, Township 37 South, Range 3 East.

Special Note - A correction to a witness tree at this corner should be as follows:

An 11-inch diameter cedar bears N83°40'E, 14.96 feet distance with a healed blaze.

One-quarter corner to Sections 23 and 26, Township 37 South, Range 3 East.

Section corner to Sections 22, 23, 26 and 27, Township 37 South, Range 3 East.

West one-sixteenth corner Sections 23 and 26, Township 37 South, Range 3 East.

At the corner point I found a 3/4 inch diameter iron post as established by Charles H. Hurst, Registered Professional Land Surveyor, and described within my survey of Section 26. Directly over the top of said monument I set a 2 1/2 inch diameter galvanized iron post with a 2 1/2 inch diameter brass cap marked:

T37S R3E
W 1/16 $\frac{S23}{S26}$
1983
LS1071

And the following references:

A 9-inch diameter fir bears S00°23'W, 30.00 feet distance. Scribed W 1/16 S26 LS1071 BT. (Note - during my survey of Section 26 I established a bearing of S02°30'W utilizing a staff compass with a declination of 19°30' East. The bearing shown on this survey was determined by reference to true meridian as determined by solar observation.)

A 16-inch diameter oak bears N56°01'W, 8.34 feet distance with a healed blaze.

A 27-inch diameter pine stump bears S32°28'W, 30.90 feet distance.

Corners utilized for control and described within this narrative.

One-quarter corner to Sections 14 and 23, Township 37 South, Range 3 East.

At the corner point I found a 2 1/2 inch diameter brass cap attached to a 3/4 inch diameter iron pin with brass cap marked:

SURVEY NARRATIVE TO COMPLY WITH
PARAGRAPH 209.250 OREGON REVISED STATUTES

SURVEY FOR: Rogue River National Forest
P. O. Box 520
Medford, OR 97501

LOCATION: Section 23, Township 37 South, Range 3 East,
Willamette Meridian, Jackson County, Oregon.

BASIS OF BEARING: Solar observations - Basis of bearings for this
survey were solar observations utilized for my sur-
vey of Section 24.

PURPOSE: To establish corner monuments and mark and post
National Forest boundaries.

PROCEDURE: Prior to commencement of this survey I performed an
investigation of controlling corner points. Corner
points along the east and south lines of the sec-
tion were verified during my survey of Sections 24
and 26. The north one-quarter corner had been
remonumented from original corner evidence by
Charles H. Hurst, Registered Professional Land
Surveyor No. 483 (reference Record Survey No.
3611). The west one-quarter corner had been remon-
umented from original corner evidence by the
Bureau of Land Management, Division of Cadastral
Surveys. With the required corner control verified
I performed a closed traverse commencing and ter-
minating with my control survey established for
Section 24. From this data I computed the sub-
division of this section. I then ran a series of
closed traverses adjacent to the lines requiring
posting. Ties were made to interior corner points
as established by Surveyor Hurst, recovered corner
points established by Hurst were compared with my
computed positions. Monumented positions
established by Hurst that were recovered within
acceptable position tolerances were accepted in
position and further monumented as described within
this narrative. Monumented positions recovered not
within acceptable position tolerances were monu-
menting in correct positions and ties made to
Surveyor Hurst's monuments.

Property lines were posted with metal posts with
National Forest boundary signs attached. Trees
along the line were blazed and each blaze painted
with red timber marking paint.

EQUIPMENT UTILIZED IN SURVEY: This survey was performed with a Wild T-2
Theodolite and Wild DI-4 and
Hewlett-Packard 3808A Electronic Distance
Meters.

SPECIAL NOTE: The west half of the south line of Section 23 was
retraced during Record Survey 9751. The bearing
and distance returned for this line differs
slightly from the bearing and distance returned
during this survey. No effort was made to rotate
the bearings and distances on this survey to coin-
cide with those of Record Survey No. 9751.