

**RECORD OF SURVEY**

FOR:  
**ROGUE RIVER NATIONAL FOREST**  
 P.O. BOX 520  
 MEDFORD, OREGON  
 OCTOBER 31, 1983  
 SURVEY AND SUBDIVISION  
 SECTION 11, T. 32 S., R. 2 E., W.M.

**HISTORY OF SURVEYS**

THE ORIGINAL G.L.O. SUBDIVISION SURVEY OF T. 32 S., R. 2 E., WAS PERFORMED BY PETER APPLIGATE UNDER CONTRACT NO. 651 DATED APRIL 25, 1896.

AN UNRECORDED SURVEY WAS PERFORMED BY EMPLOYEES OF ELK LUMBER COMPANY, MEDFORD, OREGON (NOW BOISE-CASCADE) IN 1962. MONUMENTS FOUND AND TIES ARE DESCRIBED IN THE NARRATIVE.

THE CORNERS ON THE BOUNDARY BETWEEN SEC'S. 2 & 11 WERE REMONUMENTED BY EVERETT L. SWAIN, PLS 759, IN SEPTEMBER, 1974.

FURTHER VERIFICATION OF THE UNRECORDED 1/4 CORNER MONUMENTS: 15, 14 & 13 WAS ACCOMPLISHED BY THE JACKSON COUNTY SURVEYOR IN 1974. ALSO THE 1/4 CORNER 12 WAS REMONUMENTED IN 1982 BY THE JACKSON COUNTY SURVEYOR.

ALL BT'S HAVE 6" PAINTED RED BAND; RED PAINTED FACES; "BT" TAGS; "ATTENTION" OR "LAND SURVEY MONUMENT" SIGNS ATTACHED AND ALL NEW BT'S HAVE A 3/4" ALUM. WASHER STAMPED PLS 1822 ATTACHED ON THE LOWER FACE.

A 6 FT. AL. POST WITH AN "ATTENTION" OR "LAND SURVEY MONUMENT" SIGN WAS PLACED AT EACH MONUMENT.

INSTRUMENTS USED WERE: TOPCON GT5-2 TOTAL STATION, H.P.-3800 DISTANCE METER, TOPCON TL-G THEODOLITE, TOPCON DM-51 DISTANCE METER.

EXAMINED AND ACCEPTED FOR THE U.S. FOREST SERVICE THIS 31 DAY OF October, 1983.

*[Signature]* C.O.R.

BASIS OF BEARING:  
SOLAR OBSERVATION

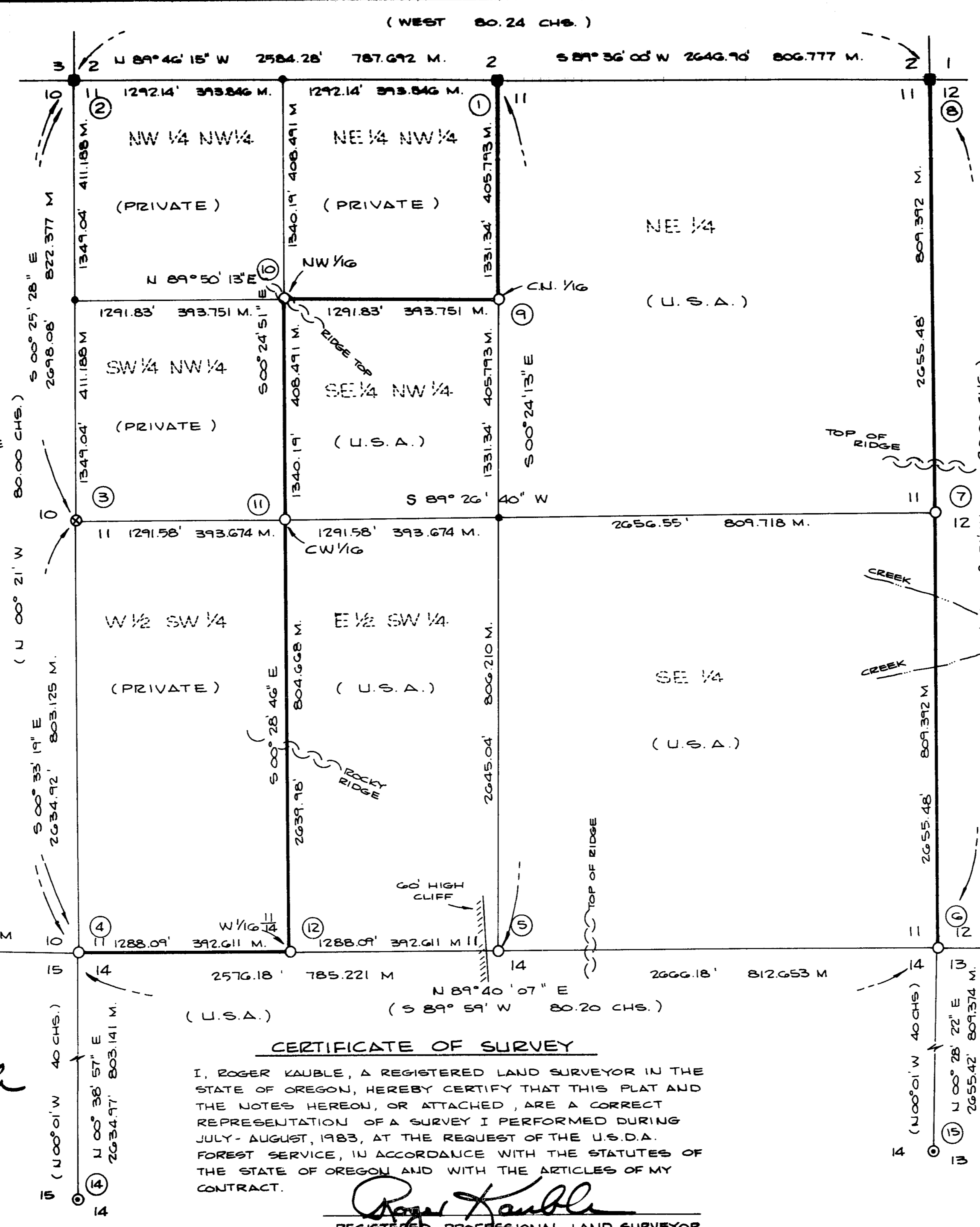
SCALE:  
(FEET)  
0 500 1000

1 METER = 3.280833 FEET

(METERS)  
0 100 200 400

**LEGEND**

- FOUND AN UNRECORDED G.I.P. W/ POT METAL FILLED REDUCER - SET FROM EVIDENCE VERIFIED & RECORDED BY THE JACKSON COUNTY SURVEYOR, 1974.
- FOUND BRONZE MONUMENT SET FROM EVIDENCE BY EVERETT L. SWAIN, PLS 759, SEPT., 1974.
- FOUND BRASS CAP SET FROM EVIDENCE BY THE JACKSON COUNTY SURVEYOR, 1982.
- ⊙ SET MONUMENT FROM ORIGINAL G.L.O. EVIDENCE
- SET 2 1/2" DIA. x 30" LONG G.I.P. WITH 2 1/2" DIA. BRASS CAP.
- COMPUTED POINT.
- ( ) RECORD DATA, G.L.O. 1896
- TRUE LINE - POSTED WITH 6 FT. ALUM. POSTS AND U.S.F.S. BOUNDARY SIGNS - BLAZED AND PAINTED WITH RED ENAMEL.
- Ⓜ REFERS TO CORNER NUMBER IN NARRATIVE.



**CERTIFICATE OF SURVEY**

I, ROGER KAUBLE, A REGISTERED LAND SURVEYOR IN THE STATE OF OREGON, HEREBY CERTIFY THAT THIS PLAT AND THE NOTES HEREON, OR ATTACHED, ARE A CORRECT REPRESENTATION OF A SURVEY I PERFORMED DURING JULY - AUGUST, 1983, AT THE REQUEST OF THE U.S.D.A. FOREST SERVICE, IN ACCORDANCE WITH THE STATUTES OF THE STATE OF OREGON AND WITH THE ARTICLES OF MY CONTRACT.

*[Signature]*  
 REGISTERED PROFESSIONAL LAND SURVEYOR  
 OREGON LICENSE 1822

REGISTERED PROFESSIONAL LAND SURVEYOR  
 OREGON  
 JULY 13, 1979  
 ROGER D. KAUBLE  
 1822

\*\* RECEIVED \*\*  
 Date 11/1/83 By SK  
 This survey consists of:  
1 sheet(s) Map  
10 page(s) Narrative  
 JACKSON COUNTY SURVEYOR

section 11 (not set). Set a 2½ inch diameter galvanized iron pipe in a mound of stone with a 2½ inch diameter brass cap marked:

C  
N 1/16 | S11  
C  
1983  
PLS 1822

From which the references are:

A 17 inch diameter white fir bears N 18° E, 8<sup>8</sup> feet, marked: "CN 1/16 S11 BT."

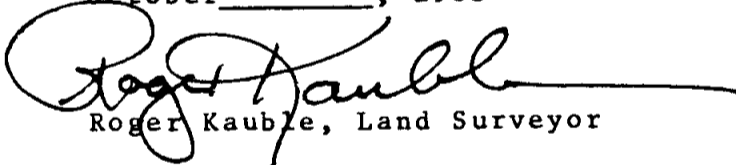
A 11 inch diameter white fir bears S 26 3/4° W, 25<sup>9</sup> feet, marked "CN 1/16 S11 BT."

A 6 feet long aluminum post with a "Land Survey Monument" sign attached is located approximately 3 feet north.

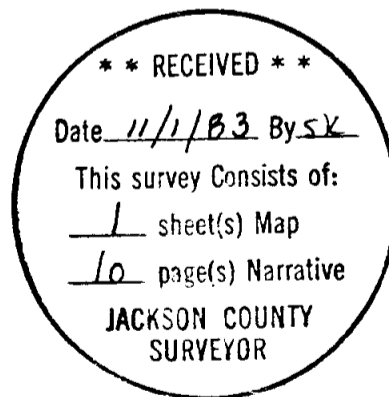
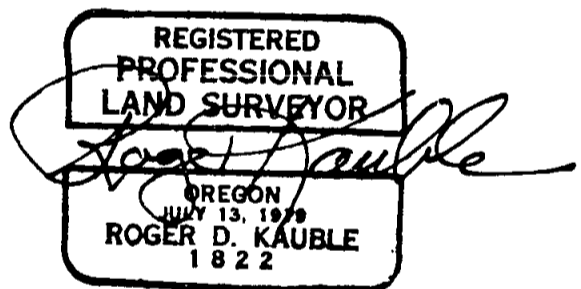
An unrecorded monument bears S 84° 55' W, 8<sup>9</sup> feet and is a 1½ inch diameter galvanized iron pipe with a pot metal filled reducer marked:

T32N R2E  
CN 1/16 Cor  
S11  
1962

October 31, 1983

  
Roger Kauble, Land Surveyor

Oregon Certificate No. 1822



11. The center west 1/16 corner of section 11.

Established the position at the midpoint between the  $\frac{1}{4}$  corner common to sections 10 and 11, and the center  $\frac{1}{4}$  corner of section 11 (not set). Set a  $2\frac{1}{2}$  inch diameter galvanized iron pipe in a mound of stone with a  $2\frac{1}{2}$  inch diameter brass cap marked:

C  $\frac{W1/16}{S 11}$  C  
 1983  
 PLS 1822

From which the references:

A 8 inch diameter white fir bears N  $15\frac{1}{4}^{\circ}$  E,  $30\frac{2}{2}$  feet, marked "CW 1/16 S 11 BT."

A 11 inch diameter white fir bears S  $39\frac{1}{2}^{\circ}$  E,  $57\frac{3}{3}$  feet, marked "CW 1/16 S11 BT."

A 6 feet long aluminum post with a "Land Survey Monument" sign attached is located approximately 2 feet south.

An unrecorded monument bears N  $85^{\circ} 12'$  E,  $7\frac{6}{6}$  feet. This monument is a  $1\frac{1}{2}$  inch diameter galvanized iron pipe with a "pot metal" filled reducer marked:

T32S R2E  
 CW 1/16 Cor  
 1962

10. The northwest 1/16 corner of section 11.

Established the position by intersection; set a  $2\frac{1}{2}$  inch diameter galvanized iron pipe in a mound of stone with a  $2\frac{1}{2}$  inch diameter brass cap marked:

NW1/16  
 S11  
 1983  
 PLS 1822

From which the references are:

A 10 inch diameter white fir bears N  $47\frac{1}{4}^{\circ}$  E,  $24\frac{0}{0}$  feet, marked: "NW 1/16 S11 BT."

A 7 inch diameter white fir bears S  $47\frac{1}{2}^{\circ}$  E,  $27\frac{6}{6}$  feet, marked: "NW 1/16 S11 BT."

A 6 feet long aluminum post with a "Land Survey Monument" sign attached is located east approximately 2 feet.

An unrecorded monument bears N  $88^{\circ} 48'$  E,  $6\frac{8}{8}$  feet. This monument is a  $1\frac{1}{2}$  inch diameter galvanized iron pipe with a "pot metal" filled reducer marked:

T32S R2E  
 NW 1/16 Cor  
 Sec 11  
 1962

9. The center north 1/16 corner of section 11.

Establish the position on line and at the midpoint between the  $\frac{1}{4}$  corner common to sections 2 and 11, and the center  $\frac{1}{4}$  corner

A 6 inch diameter fir bears N 61° E, 40 links distant,  
Marked "¼ S BT."

A 6 inch diameter fir bears S 51° W, 15 links distant.  
Marked "¼ S BT."

Ties were made to the section corners to the north and south  
and a proportioned search point was established. Also, ties  
were made to topographic calls:

- 1) The top of a ridge, 3.50 chains north.
- 2) A stream branch 3 links wide, course southeast,  
7.00 chains south.

A search area was established from these ties and a thorough  
search was made without success.

At the single proportioned position, set a 2½ inch diameter  
galvanized iron pipe in a 3 feet x 0.5 feet mound of stone  
with a 2½ inch brass cap marked:

T32S R2E  
¼ S11+S12  
1983  
PLS 1822

From which the references are:

A 6 feet long aluminum post with a "Land Survey Monument"  
sign located approximately 2 feet south.

A 8 inch diameter cedar bears N 62 ¾° W, 13<sup>0</sup> feet, marked  
"¼ S 11 BT."

A 9 16 inch diameter white fir bears S 85° E  
32<sup>9</sup> feet, marked "¼ S 12 BT."

All BT<sup>S</sup> are tagged with an aluminum washer at the lower blaze  
marked "PLS 1822."

An unrecorded monument was found N 79° 54' W, 3 <sup>54</sup>/<sub>54</sub> feet, the  
above described position. This monument is a 1½ inch diameter  
galvanized iron pipe with a "pot metal" filled reducer marked:

T32S R2E  
11 + 12  
¼ Cor  
1962

12. The west 1/16 corner common to sections 11 and 14.

Established the position at the midpoint between the section  
corner common to sections 10, 11, 14 and 15 and the ¼ corner  
common to sections 11 and 14. Set a 2½ inch diameter galvanized  
iron pipe in a mound of stone with a 2½" diameter brass cap marked:

W1/16 <sup>S11</sup>/<sub>S14</sub>  
1983  
PLS 1822 .

From which the references are:

A 6 inch diameter cedar bears N 4° W, 15<sup>5</sup> feet, marked:  
"W 1/16 S 11 BT."

A 9 inch diameter white fir bears S 23° E, 23<sup>7</sup> feet,  
marked: "W 1/16 S14 BT."

A 6 feet long aluminum post with a "Land Survey Monument"  
sign attached is located approximately 3 feet west.

A 7 inch diameter white fir bears S  $79\frac{1}{2}^{\circ}$  W,  $36\frac{9}{10}$  feet, marked "T32S R2E S14 BT."

A 14 inch diameter white fir bears N  $60\frac{1}{2}^{\circ}$  W,  $33\frac{5}{10}$  feet, marked "T32S R2E S11 BT."

A 10 inch diameter cedar bears N  $54^{\circ}$  E,  $31\frac{6}{10}$  feet, marked "T32 S R2E S12 BT."

All BT<sup>S</sup> are tagged on the lower blaze with a 3/4 inch diameter aluminum washer marked: "PLS 1822."

5. The  $\frac{1}{4}$  section corner common to sections 11 and 14.

This corner position was established on June 29, 1896, by Peter Applegate and was monumented by a 12 inch x 10 inch x 8 inch stone set 8 inches in the ground from which a 2 feet x  $1\frac{1}{2}$  feet high mound of stone lies on the west side. No other references were established.

Ties were made to the section corners to the east and west and to topographic calls:

- 1) A perpendicular cliff, 60 feet high 0.3 chains west.
- 2) A rocky ridge 10 chains east.

A search area was established along the called 60 feet high cliff and a thorough search was made for the original stone without success.

Established the position of this corner on line between the section corners east and west, and 19.8 feet east of the 60 feet high cliff; set a  $2\frac{1}{2}$  inch diameter galvanized iron pipe in a 3 feet x 2 feet diameter mound of stone with a  $2\frac{1}{2}$  inch diameter brass cap marked:

T32S R2E  
 $\frac{1}{4}$   $\frac{S11}{S14}$   
1983  
PLS 1822

From which the references are:

A 6 feet long aluminum post with a "Land Survey Monument" sign attached is located approximately 3 feet east.

A 10 inch diameter white fir bears S  $56^{\circ}$  E,  $37\frac{6}{10}$  feet marked " $\frac{1}{4}$ S 14 BT."

A 10 inch white fir bears N  $50\frac{1}{2}^{\circ}$  E,  $12\frac{3}{10}$  feet, marked " $\frac{1}{4}$  S 11 BT."

All BT<sup>S</sup> are tagged on the lower blaze with an aluminum washer marked "PLS 1822."

An unrecorded monument was found N  $55^{\circ}$  27' E, 39.46 feet from the above described position. This monument is a  $1\frac{1}{2}$  inch diameter galvanized iron pipe with a "pot metal" filled reducer marked:

T32S R2E  
 $\frac{11}{14}$   
 $\frac{1}{4}$  Cor  
1962

7. The  $\frac{1}{4}$  section corner common to sections 11 and 12.

This corner position was established on June 27, 1896, by Peter Applegate and was monumented by a 12 inch x 10 inch x 6 inch stone set 8 inches in the ground marked  $\frac{1}{4}$  on the west face from which the references:

All BT<sup>S</sup> are tagged on the lower blaze with a 3/4 inch diameter aluminum washer marked: "PLS 1822."

6. The Section corner common to sections 11, 12, 13 and 14.

This corner position was established on June 26, 1896 by Peter Applegate and was monumented by a stone, 12 inches x 10 inches x 8 inches, set 8 inches into the ground, and marked with 4 notches on the south and one notch on the east edge from which:

"A fir 12 ins diam brs N45<sup>o</sup>E 22 lks distant, marked T32S R2E S12 BT."

"A fir 16 in diam brs S51<sup>o</sup>E 28 lks dist marked T32S R2E S13 BT."

"A fir 10 in diam brs S72<sup>1</sup>/<sub>2</sub>W 148 lks dist marked T32S R2E S14 BT."

"A fir 24 in diam brs N25<sup>o</sup>W 5 lks dist marked T32S R2E S11 BT."

An unrecorded survey was performed by employees of Elk Lumber Company in 1962 and a double proportioned position was determined and a 1<sup>1</sup>/<sub>2</sub> inch diameter galvanized iron pipe with a "pot metal" filled reducer marked:

T32S	R2E
11   12	
14   13	
1962	

This monument was found out of the ground near the developed search area.

Ties were made to verified <sup>1</sup>/<sub>4</sub> corners immediately to the east and south, to the <sup>1</sup>/<sub>4</sub> corner between sections 10 and 15 to the west, and to the section corner common to sections 1, 2, 11 and 12 to the north. A double proportioned search point was established from these ties. Further ties were made to topography calls:

- 1) A stream branch 25 chains to the north
- 2) A spring 13.5 chains to the south.
- 3) The top of a spur 19.5 chains to the south

A search area was developed from the calls and the double proportioned search point. The area searched appears to have been logged at least twice, and burned since the corner position was originally established. Numerous trees, stumps and stones were examined and after a rigorous search of the area without success, the position was presumed lost.

At the double proportioned position a 2<sup>1</sup>/<sub>2</sub>" diameter galvanized iron pipe was set in a 2 x 3 feet mound of stone, with a 2<sup>1</sup>/<sub>2</sub> inch diameter brass cap marked:

T32S	R2E
S11   S12	
S14   S13	
1983	
PLS 1822	

From which the references are:

A 6 feet long aluminum post with a "Land Survey Monument" sign attached is located approximately 3 feet north.

A 15 inch diameter cedar bears S 35<sup>o</sup> E, 17<sup>3</sup>/<sub>4</sub> feet, marked "T32S R2E S13 BT."

Corners Established This Survey

## 4. The Section corner common to Sections 10, 11, 14 and 15:

This corner position was established on June 28, 1896, by Peter Applegate and was monumented by a stone, 12 inches x 10 inches x 8 inches, set 8" in the ground, and marked with 4 notches on the south and 2 notches on the east edges. A 2 feet x 1½ feet stone base was used as reference. No other accessories were established.

An unrecorded survey was performed by employees of Elk Lumber Company in 1962 and a stone was apparently accepted as that of record. Upon investigation, this stone was found to be only the end of a very large Boulder and did not (other than location) fit that described by the record.

A 1½ inch diameter galvanized iron pipe (GIP) with a galvanized reducer filled with "pot metal" and marked:

T32S	R2E
10	11
15	14

1962

was found against the above described stone on the north side. This monument is N 45° 58' W, 26.16 feet from the double proportioned positions. Ties were made to the found and verified ¼ corners to the immediate north, west and south and to the ¼ corner between sections 12 and 13 (the nearest found and verified monument to the east). A double proportioned search point was established from these ties. Further ties were made to topographic calls:

- 1) A stream branch at 22 chains to the south.
- 2) A ridge at 3 chains to the north.
- 3) A Rocky Canyon 10.2 chains to the east. (Canyon is 30 chains east.)

A search area was developed from the calls and the double proportioned search point. A very rigorous search was made of this area without success and the position was presumed lost.

At the double proportioned position, a 2½ inch diameter galvanized iron pipe was set in a mound of stone with a 2½ inch brass cap marked:

T32S	R2E
S10	S11
S15	S14

1983

PLS 1822

From which the references are:

A 6 feet long aluminum post with a "Land Survey Monument" sign attached is located approximately 3 feet east.

A 7 inch diameter white fir bears N 55½° W, 29<sup>2</sup> feet, scribed "T32S R2E S10 BT."

A 10 inch diameter chinquapin bears N 55 3/4° E, 24<sup>2</sup> feet, scribed "T32S R2E S11 BT."

A 16 inch diameter white fir bears S 22 ¼° W, 95<sup>2</sup> feet, scribed "T32S R2E S15 BT."

A 17 inch diameter white fir bears S 44 3/4° E, 30<sup>2</sup> feet, scribed "T32S R2E S14 BT."

Marked an additional reference:

An 8 inch diameter white fir bears S  $69\frac{3}{4}^{\circ}$  W,  $15\frac{8}{}$  feet, scribed " $\frac{1}{4}$  S15 BT" and a  $\frac{3}{4}$  inch diameter aluminum washer stamped "PLS 1822" attached to the lower blaze.

14. The  $\frac{1}{4}$  section corner common to sections 15 and 14.

Found a  $1\frac{1}{4}$  inch diameter galvanized iron pipe with a "pot metal" filled reducer in a mound of stone marked:

T32S R2E  
 15  $\dagger$  14  
 $\frac{1}{4}$  Cor  
 1961

From which the references are:

A 19 inch Douglas fir bears N  $49^{\circ}$  E,  $27^{\circ}$  feet to the center of the tree. Healed blaze.

A 14 inch Douglas fir bears S  $60^{\circ}$  E,  $6\frac{6}{}$  feet, scribing visible.

A 14 inch Douglas fir bears N  $54^{\circ}$  W,  $29\frac{3}{}$  feet, scribing visible.

15. The  $\frac{1}{4}$  section corner common to sections 14 and 13.

Found a  $1\frac{1}{4}$  inch diameter galvanized iron pipe with a "pot metal" filled reducer in concrete, marked:

T32S R2E  
 14  $\dagger$  13  
 $\frac{1}{4}$  Cor  
 1961  
 CS 1974

From which the references are:

A 20 inch diameter white fir bears S  $76\frac{3}{4}^{\circ}$  W,  $12\frac{8}{}$  feet, lower blaze open, " $\frac{1}{4}$ " visible.

A 12 inch diameter white fir bears S  $40\frac{1}{4}^{\circ}$  W,  $39\frac{5}{}$  feet, scribing visible in lower blaze.

A 22 inch white fir bears N  $36\frac{3}{4}^{\circ}$  E,  $63^{\circ}$  feet, healed blaze.

16. The  $\frac{1}{4}$  section corner common to sections 12 and 13.

Found a  $2\frac{1}{2}$  inch brass cap in a mound of stone marked:

T32S R2E  
 $\frac{1}{4}$  S  
 $\frac{12}{13}$   
 CS 1982

From which the references are:

A 20 inch diameter hemlock bears S  $48\frac{1}{4}^{\circ}$  E,  $97\frac{3}{}$  feet, blazed and scribed "CS BT".

A 14 inch diameter hemlock bears S  $86\frac{1}{4}^{\circ}$  W,  $28\frac{1}{}$  feet, healed blazes.



A 7 inch diameter yew bears N  $84^{\circ}$  E,  $12^{\frac{0}{}}$  feet, scribed " $\frac{1}{2}$  S2 BT PLS 759".

A 12 inch white fir bears N  $31^{\circ}$  E,  $8^{\frac{6}{}}$  feet, bottom blaze open and scribed "BT" visible.

3. The  $\frac{1}{2}$  corner common to sections 10 and 11, Township 32 South, Range 2 East.

Found a  $1\frac{1}{2}$  inch diameter galvanized iron pipe with a "Pot Metal" filled pipe reducer laying on the ground among considerable logging debris and marked:

T32S R2E  
 10 † 11  
 $\frac{1}{2}$  Cor  
 1962  
 CS1974

Set a  $2\frac{1}{2}$  inch diameter galvanized iron pipe in a mound of stone with a  $2\frac{1}{2}$  inch diameter brass cap marked:

T32S R2E  
 $\frac{1}{2}$  S10 † S11  
 1983  
 LS 1822

From the found references:

A 9 inch diameter stump bears S  $76^{\circ}$  W,  $24^{\frac{5}{}}$  feet to center of stump at the lower blaze; scribed " $\frac{1}{2}$ S" on open face.

A 17 inch diameter cedar stump bears S  $80\frac{3}{4}^{\circ}$  E,  $99^{\frac{3}{}}$  feet to center, scribed "CS BT" on open face.

A 10 inch white fir stump bears N  $55\frac{1}{2}^{\circ}$  W,  $54^{\frac{4}{}}$  feet to center, scribed "CS BT".

Marked additional references:

A 9 inch diameter white fir bears N  $0\frac{3}{4}^{\circ}$  E,  $225^{\frac{1}{}}$  feet, scribed " $\frac{1}{2}$ S11 BT" and a  $\frac{3}{4}$  inch diameter aluminum washer stamped "PLS 1822" attached to the lower blaze.

A 9 inch diameter white fir bears N  $82\frac{1}{2}^{\circ}$  E,  $157^{\frac{3}{}}$  feet, scribed " $\frac{1}{2}$  S11 BT" and a  $\frac{3}{4}$  inch diameter aluminum washer stamped "PLS 1822" attached to the lower blaze.

13. The  $\frac{1}{2}$  section corner common to sections 10 and 15.

Found a 1 inch diameter galvanized iron pipe in a mound of stone with a pot metal filled reducer marked:

T32S R2E  
 $\frac{10}{15}$   
 $\frac{1}{2}$  Cor  
 1961  
 CS 1974

From which the references are:

A 24 inch cedar bears N  $30\frac{3}{4}^{\circ}$  E,  $80^{\frac{3}{}}$  feet, with healed blazes.

A 16 inch white fir bears S  $78\frac{3}{4}^{\circ}$  E,  $14^{\frac{9}{}}$  feet, scribing visible "CS BT".

A 35 inch fir blown over bears S  $11\frac{1}{2}^{\circ}$  W,  $14^{\frac{6}{}}$  feet to a "BT" sign. Estimate stump hole bears S  $21^{\circ}$  W,  $10^{\frac{5}{}}$  feet (Record S  $21^{\circ}$  W,  $9^{\frac{24}{}}$  feet).

A 31 inch diameter fir bears S  $52\frac{1}{4}^{\circ}$  W,  $44\frac{8}{10}$  feet to the center of the tree with a healed blaze.

A 16 inch diameter fir bears N  $24^{\circ}$  W,  $59\frac{5}{10}$  feet to the center of the tree with a healed blaze.

A 10 inch diameter white fir bears N  $40^{\circ}$  E,  $26\frac{6}{10}$  feet to the center of the tree with a healed blaze, some scribing visible.

A 26 inch diameter fir bears N  $47^{\circ}$  E,  $15\frac{5}{10}$  feet to the center of the tree, Bark scribed.

A 40 inch diameter fir bears S  $61^{\circ}$  E,  $16\frac{5}{10}$  feet with a healed blaze.

8. The Section corner common to sections 1, 2, 11 and 12.

Found a  $2\frac{1}{2}$ " diameter brass cap in a mound of stone marked:

Swain Surveying  
T32S      R2E  
  
      2      1  
-----  
      11    |    12  
Survey Monument  
      PLS 759  
      1974

From which the references are:

A metal fence post with a "Survey Monument" sign approximately 5 feet west.

A  $6\frac{1}{2}$  inch diameter Dogwood (Down) bears N  $35^{\circ}$  W,  $17\frac{1}{10}$  feet distant.

A 16 inch diameter white fir bears S  $72\frac{1}{2}^{\circ}$  W,  $22\frac{4}{10}$  feet, open with scribing visible.

A 10 inch diameter white fir bears S  $19^{\circ}$  E,  $9\frac{7}{10}$  feet, scribing visible.

A 7 inch diameter white fir bears S  $29^{\circ}$  W,  $35\frac{9}{10}$  feet, scribing visible.

A 10 inch diameter yew bears N  $66\frac{3}{4}^{\circ}$  W,  $43\frac{4}{10}$  feet, scribed "T32SR2E S2 BT PLS759."

A 12 inch diameter white fir bears N  $52\frac{3}{4}^{\circ}$  E,  $34\frac{4}{10}$  feet, scribing visible.

1. The  $\frac{1}{4}$  section corner common to sections 2 and 11.

Found a  $2\frac{1}{2}$  inch diameter brass cap on a  $1\frac{1}{2}$ " diameter pipe driven into a stump and marked:

Swain Surveying  
T32S      R2E  
      S      2  
-----  
 $\frac{1}{4}$     S    |    11  
Survey Monument  
      PLS 759  
      1974

From which the references are:

A metal fence post with a "Survey Monument" sign attached is approximately 5 feet West.

A 40 inch diameter fir bears S  $34^{\circ}$  W,  $10\frac{5}{10}$  feet, with a healed blaze.

SURVEY NARRATIVE TO COMPLY WITH  
PARAGRAPH 209.250 OREGON REVISED STATUTES

**SURVEY FOR:** Rogue River National Forest  
P. O. Box 520  
Medford, Oregon 97501

**LOCATION:** Section 11, Township 32 South, Range 2 East,  
Willamette Meridian, Jackson County, Oregon

**BASIS OF BEARING:** Solar observation

**PURPOSE:** To establish corner monuments, and mark and post National Forest Boundaries within Section 11; the boundary between Sections 11 and 12; and a portion of the boundary between Sections 11 and 14, from the Section corner common to sections 10, 11, 14 and 15 to the West 1/16 corner for Sections 11 and 14.

**PROCEDURE:** Four GLO corners necessary to define Section 11 had not been previously recovered or verified. These corners are: The Section corner common to sections 10, 11, 14 and 15; 1/4 section corner common to sections 11 and 14; Section corner common to sections 11, 12, 13 and 14; and the 1/4 section corner common to sections 11 and 12. All other needed corners were found and verified.

An extensive search was planned and conducted for each of the missing corners utilizing ties to "called" topography, ties to adjacent corners and searches for "uncalled" blazed line trees to develop "Search Areas".

True lines were posted with aluminum posts with "National Forest Boundary" signs. Trees along the true line were blazed and painted with red paint.

Equipment used for this survey included a Topcon GTS-2; a Topcon TL-6, Theodolite; Topcon DM-S1 Electronic Distance Meter; and a Hewlett-Packard 3800 Electronic Distance meter.

Corners Accepted for Control

- All in Township 32 South Range 2 East.  
2. The Section corner common to sections 2, 3, 10 and 11.

Found a 2½" diameter brass cap monument flush with the ground marked

Swain Surveying	
T32S	R2E
S3	S2
S10	S11
PLS	759

Survey Monument  
1974

From which the references are:

A metal fence post with a "Survey Monument" sign attached is approximately 5 feet north of the monument.