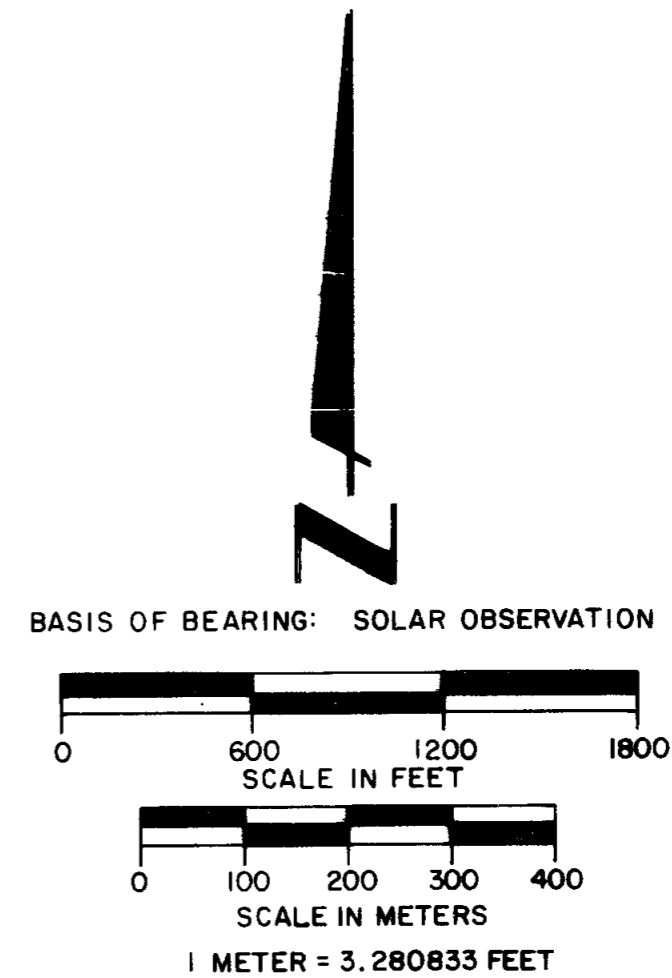
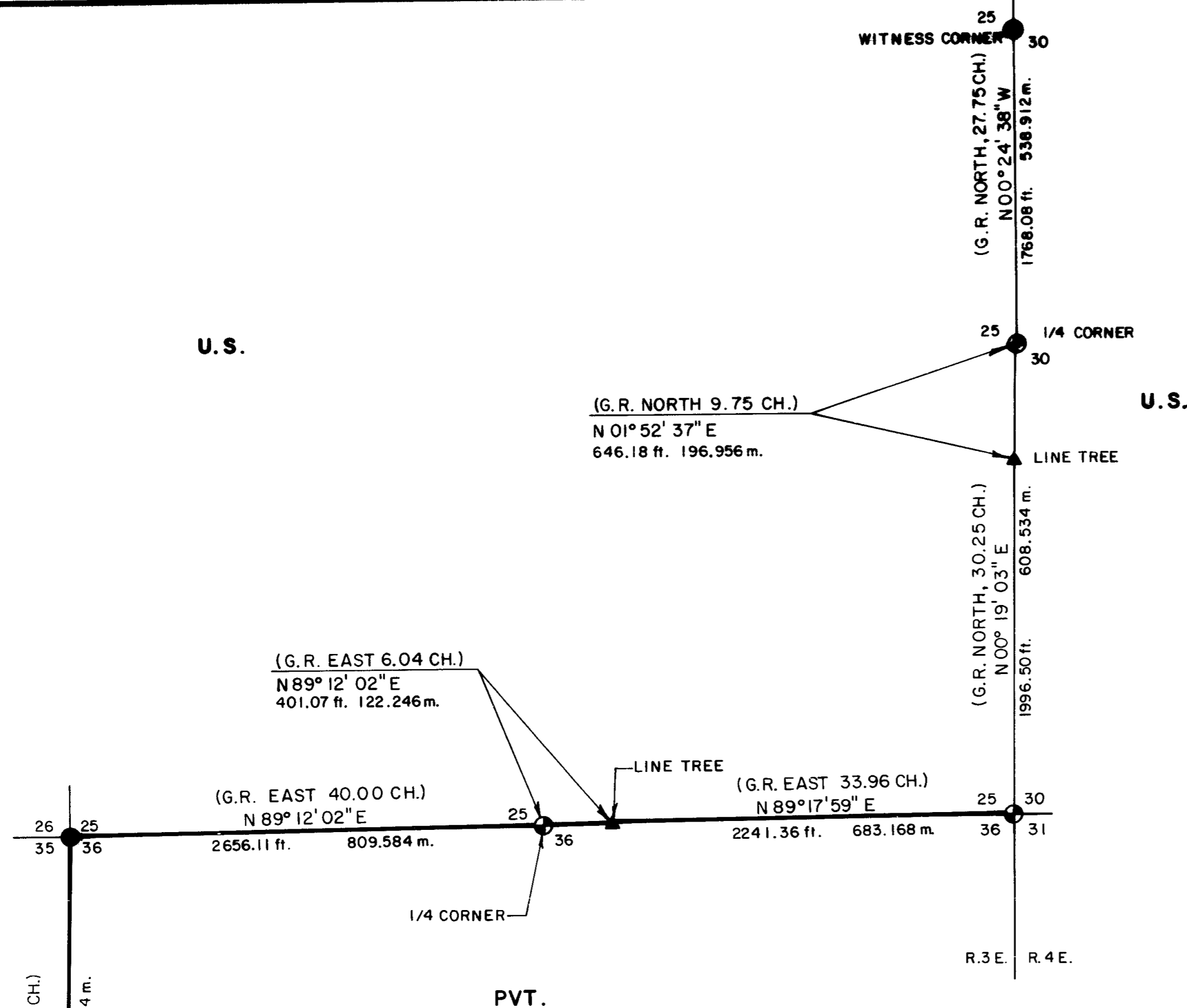


MAP OF SURVEY  
FOR  
ROGUE RIVER NATIONAL FOREST  
P.O. BOX 520  
MEDFORD, OREGON  
SEPTEMBER 15, 1983

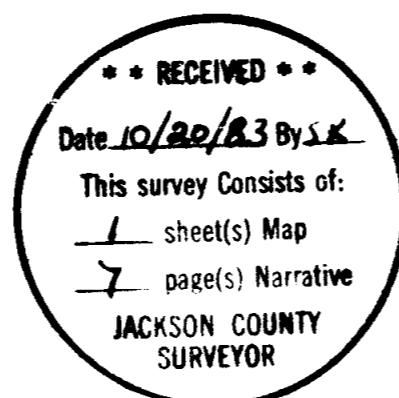


**HISTORY OF SURVEYS**

The West and North lines of Section 36, and the East line of Section 25 were established by Deputy Surveyor Jesse Applegate under contract no. 137, dated August 18, 1870. The Northwest and Southwest corners of Section 36 were remonumented from original evidence by the Bureau of Land Management in 1961. The witness corner between Sections 25 and 30 was remonumented from original evidence by the Jackson County Surveyors office in 1974. No other surveys of record were noted.

**CERTIFICATE OF SURVEY**

I, Harold L. Center, Registration No. 1071 Registered Professional Land Surveyor, State of Oregon, hereby certify that this plat correctly represents a survey made by me or under my direction in conformance with the laws of the State of Oregon, at the request of the U.S. Forest Service.



**LEGEND**

- FOUND STANDARD B.L.M. OR COUNTY SURVEYOR BRASS CAP MONUMENT.
- ⊕ SET 2 1/2" x 30" L.G. IRON POST WITH 2 1/2" DIA. BRASS CAP.
- ▲ LINE TREE.
- PROPERTY LINE MARKED AND POSTED.
- SECTION LINE CALCULATED FROM TRAVERSE SURVEY.

U.S. DEPARTMENT OF AGRICULTURE  
FOREST SERVICE  
REGION 6 ROGUE RIVER NATIONAL FOREST

**DEPENDENT RESURVEY**  
SECTIONS 25 & 36, T. 37 S., R. 3 E., W.M.  
JACKSON COUNTY, OREGON

REVIEWED BY: *[Signature]* DATE: *[Date]*  
REVIEWED BY: *[Signature]* DATE: *[Date]*  
PROJECT 83-24

T. 37 S.  
T. 36 S.  
35 36  
2 1

An 11-inch diameter fir bears S63°59'W, 12.70 feet distance, scribed "T37S R3E S36 LS 1071 BT."

A 28-inch diameter fir bears N17°11'W, 14.60 feet distance, scribed "T37S R3E S25 LS 1071 BT."

And an unrecorded bearing tree:

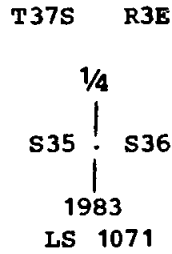
A 33-inch diameter fir bears N14°37'E, 34.09 feet distance with scribe marks "S" visible on an open upper blaze, and a healed lower blaze (this tree is believed to have been marked by Ray Schindler, a Forest Service employee, about 1910).

September 15, 1983

HAROLD L. CENTER  
Registered Professional Land Surveyor  
Oregon Certificate No. 1071



At a proportional position on line between the section corner common to Sections 25, 26, 35 and 36, and the section corner common to Sections 35, 36, 1 and 2, I set a 2½-inch diameter, 30-inch long galvanized iron post with a 2½-inch diameter brass cap marked:



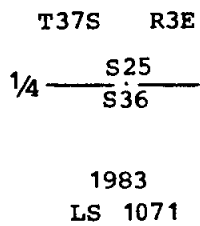
From which the following references:

A 9-inch diameter fir bears S42°44' E, 4.80 feet distance, scribed "¼ S36 LS 1071 BT."

An 8-inch diameter cedar bears S55°31'W, 9.40 feet distance, scribed "¼ S35 LS 1071 BT."

One-quarter corner common to Sections 25 and 36, Township 37 South, Range 3 East.

At a proportional position on line between the recovered line tree and the section corner common to Sections 25, 26, 35 and 36, I set a 2½-inch diameter, 30-inch long galvanized iron post with a 2½-inch diameter brass cap marked:



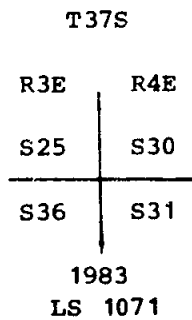
From which the following references:

A 46-inch diameter fir bears N32°07'E, 76.07 feet distance, scribed "¼ S25 LS 1071 BT."

A 20-foot x 6-foot x 5-foot granite rock bears S19°01'W, 6.40 feet distance, marked "X B0," with a pk-nail in the center of the "X".

Section corner common to Sections 25 and 36, Township 37 South, Range 3 East, and Sections 30 and 31, Township 37 South, Range 4 East.

At a proportional position determined by record distance-distance intersection from the recovered line trees on the south and east lines of Section 25 (two-point control), I set a 2½-inch diameter, 30-inch long galvanized iron post with a 2½-inch diameter brass cap marked:



From which the following references:

A 24-inch diameter fir bears N87°02'E, 15.30 feet distance, scribed "T37S R4E S30 LS 1071 BT."

A 14-inch diameter fir bears S62°53'E, 16.50 feet distance, scribed "T37S R4E S31 LS 1071 BT."

A 14-inch diameter fir bears S09°33'E, 13.30 feet distance, with scribe marks "CS BT" visible on a partially healed blaze.

A 17-inch diameter fir bears S57°07'W, 39.30 feet distance, with scribe marks "C" visible on a partially healed blaze.

Line tree on the line between Section 25, Township 37 South, Range 3 East, and Section 30, Township 37 South, Range 4 East.

At a point S00°12'06"W, 2,413.89 feet distance from the witness corner common to Sections 25 and 30, I found a 42-inch diameter fir snag with 3 bark blazes on the north face and 3 bark blazes on the south face. I accept this tree as the original line tree and the point marking the center of this tree now serves as an angle point on the line between Sections 25 and 30.

I mark the following references to this angle point:

A 10-inch diameter fir bears N41°00'E, 29.40 feet distance, scribed "AP S30 LS 1071 BT."

A 10-inch diameter fir bears S37°15'W, 18.80 feet distance, scribed "AP S25 LS 1071 BT."

One-quarter corner common to Section 25, Township 37 South, Range 3 East, and Section 30, Township 37 South, Range 4 East.

At the corner point, as determined from the record bearing and distance from the recovered original northwest bearing tree, I set a 2½-inch diameter, 30-inch long galvanized iron post with a 2½-inch diameter brass cap marked:

T37S

R3E

R4E

1/4  
|  
S25 . S30  
|  
1983  
LS 1071

From which the following references:

A 32-inch diameter fir snag bears N21°00'W, 29.70 feet distance, with scribe marks "BT" and axe work visible in the lower blaze (original northwest bearing tree record: N21°W, 45 links).

A 26-inch diameter fir bears S47°54'W, 62.04 feet distance, scribed "1/4 S25 LS 1071 BT."

A 20-inch diameter fir bears S47°18'E, 98.83 feet distance, scribed "1/4 S30 LS 1071 BT."

And an unrecorded bearing tree:

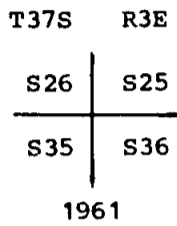
A decayed fir stump, diameter indeterminate, bears N07°26'E, 30.96 feet distance, with scribe marks "1/4S RS BT" and axe work visible on a single blaze (this tree is believed to have been marked by Ray Schindler, a Forest Service employee, about 1910).

#### Corners Established This Survey

One-quarter corner common to Sections 35 and 36, Township 37 South, Range 3 East.

At the corner point, I found a standard Bureau of Land Management brass cap monument marked:

U.S. Dept. of Interior  
Unlawful to Disturb



Cadastral Survey  
Bureau of Land Management

From which the following references:

A 14-inch diameter fir bears N57°18'E, 21.60 feet distance, with a healed blaze.

A 33-inch diameter fir snag bears S50°16'E, 10.90 feet distance, with a healed blaze.

An 18-inch diameter fir bears S15°25'E, 45.00 feet distance, with a healed blaze.

A 12-inch diameter fir bears S45°19'W, 51.10 feet distance, with a healed blaze.

A 24-inch diameter fir bears N34°24'W, 6.50 feet distance, with illegible scribe marks visible on an open face.

A 14-inch diameter fir bears N15°11'W, 81.60 feet distance, with a healed blaze.

Line tree on the line between Sections 25 and 36, Township 37 South, Range 3 East.

At a point N89°12'02"E, 3,057.18 feet distance from the section corner common to Sections 25, 26, 35 and 36, I found a 26-inch diameter fir with a single blaze on the west face and 2 notches on the east face. This tree is standing and is in good condition. I accept this tree as the original line tree and the point marking the center of this tree now serves as an angle point on the line between Sections 25 and 36.

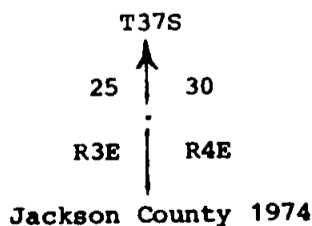
I mark the following references to this angle point:

A 15-inch diameter fir bears N38°00'E, 13.20 feet distance, scribed "AP S25 LS 1071 BT."

A 12-inch diameter fir bears S76°30'E, 13.60 feet distance, scribed "AP S36 LS 1071 BT."

Witness corner common to Section 25, Township 37 South, Range 3 East, and Section 30, Township 37 South, Range 4 East.

At the corner point I found a standard Jackson County Surveyor's brass cap monument marked:



From which the following references:

A 32-inch diameter fir snag bears N12°56'E, 5.40 feet distance, with scribe marks "BT" visible on an open blaze.

diameter fir snag with fragments of the "BT" scribe and axe work visible in the lower blaze. This recovered tree is the original northwest bearing tree. I was unable to locate the corner stone or any evidence of the original northeast bearing tree (an 18-inch diameter laurel). I reestablished this corner at record bearing and distance from the recovered original northwest bearing tree.

Property lines were posted utilizing aluminum posts with National Forest boundary signs attached. Trees along the true lines were blazed and painted with red timber marking paint.

EQUIPMENT USED: This survey was performed utilizing a Wild T-2 Theodolite and Hewlett-Packard 3805 and 3808A Electronic Distance Meters.

Corners Accepted For Control

Section corner common to Sections 35 and 36, Township 37 South, Range 3 East, and Sections 1 and 2, Township 38 South, Range 3 East.

At the corner point, I found a standard Bureau of Land Management brass cap monument marked:

U.S. Dept. of Interior  
Unlawful to Disturb

T37S	R3E
S35	S36
S2	S1

T38S

1961

Cadastral Survey  
Bureau of Land Management

From which the following references:

A 23-inch diameter fir bears N74°13'E, 13.50 feet distance, with scribe marks "T37S R3E S36 BT" visible on a partially healed blaze.

A 28-inch diameter fir bears S27°17'E, 39.10 feet distance, with a healed blaze.

A 25-inch diameter fir bears S23°09'W, 23.20 feet distance, with scribe marks "T38S" visible on a partially healed blaze.

A 15-inch diameter fir snag bears S27°44'W, 25.90 feet distance, with illegible scribe marks visible on a partially healed blaze.

A 23-inch diameter fir bears N24°54'W, 29.50 feet distance, with scribe marks "T S R3E S35 BT" visible on a partially healed blaze.

Section corner common to Sections 25, 26, 35 and 36, Township 37 South, Range 3 East.

of the tree. I opened the blaze on the west face and the ring count dated to 113 years, the date of the original survey. A comparison of other topography calls further verified this to be the line tree called for in the original survey. Since this tree is the original line tree, I reference said tree as an angle point on the south line of Section 25.

At a point  $S00^{\circ}12'06''W$ , 2,413.89 feet (36.57 chains) from the witness corner common to Sections 25 and 30, I recovered a 42-inch diameter fir snag with 3 bark blazes on the north face and 3 bark blazes on the south face. The size and shape of the blazes match others found in the area dating back to the original survey. A search of the area revealed no other trees of the appropriate size, age or species, or with appropriate markings. I accept this tree as the line tree called for in the original record, and reference said tree as an angle point on the east line of Section 25.

Blazed trees along the south and east lines of Section 25 were tied and ring counts were made to determine age of blazes. Two trees along the south line of Section 25, east of the recovered line tree between Sections 25 and 36, and one tree along the east line of Section 25, south of the recovered line tree between Sections 25 and 30, were determined to have blazes dating back to the original survey. From this information, a locus of lines was determined and search areas for the section corner common to Sections 25, 30, 31 and 36 were determined. Search areas were also determined utilizing topography calls and record calls from the recovered line trees. I conducted an extensive search of these areas and I was unable to recover any evidence of the original corner. I therefore reestablished this corner at record distance-distance intersection from the recovered line trees on the south and east lines of Section 25. This position utilizes the nearest recovered points of the original survey (the line trees), is consistent with the topography called for in the original record, and fits a locus of lines determined from recovered blazed trees of the original survey along the south and east lines of Section 25. This method of proportionment also reestablishes the corner in the same manner as it was originally established.

An extensive search was made along the south line of Section 25 for evidence of the one-quarter corner common to Sections 25 and 36. Topography along the south line of Section 25 was tied and correlated with the topography called for in the original record. Search areas for the missing one-quarter corner were determined at record distance from the southwest corner of Section 25 and the recovered line tree on the south line of Section 25. An extensive search for evidence of the one-quarter corner was made without success. The area has been disturbed by an extensive landslide, and since I was unable to locate any evidence of the original corner, I reestablished this corner at proportionate distance between the recovered line tree on the south line of Section 25 and the southwest corner of Section 25.

An extensive search was made along the east line of Section 25 for evidence of the one-quarter corner common to Sections 25 and 30. Search areas for the missing one-quarter corner were determined at record distance from the witness corner common to Sections 25 and 30, and the recovered line tree on the east line of Section 25. During an extensive search for evidence of the one-quarter corner, I recovered the broken, partially decayed remains of a 32-inch

SURVEY NARRATIVE TO COMPLY WITH  
PARAGRAPH 209.250 OREGON REVISED STATUTES

**SURVEY FOR:** Rogue River National Forest  
P. O. Box 520  
Medford, OR 97501

**LOCATION:** Sections 25 and 36, Township 37 South, Range 3 East,  
Willamette Meridian, Jackson County, Oregon.

**BASIS OF BEARING:** Solar observation

**PURPOSE:** To monument corners along the east line of Section  
25; to monument corners and mark and post National  
Forest boundaries along the north and west lines of  
Section 36.

**PROCEDURE:** Prior to commencement of this survey, an investiga-  
tion of the required controlling corners was made.  
The northwest and southwest section corners of  
Section 36 had been remonumented from original evi-  
dence by the Bureau of Land Management, Division of  
Cadastral Surveys. The witness corner of Sections 25  
and 30 had been remonumented from original evidence  
by the Jackson County Surveyor.

Utilizing this corner control, I performed a closed  
traverse survey along the west and north lines of  
Section 36, and the east line of Section 25, tying in  
all of the above corner control.

An extensive search was conducted along the west line  
of Section 36 for the line trees called for in the  
original record, for blazed trees dating back to the  
original survey (113 years), and for evidence of the  
one-quarter corner common to Sections 35 and 36. The  
area has been extensively logged and I was unable to  
identify any of the original line trees. I was also  
unable to locate any blazed trees of suitable age in  
determining a locus of the original survey line.  
Search areas for the missing one-quarter corner were  
determined at record distance from the southwest and  
northwest section corners of Section 36, and an  
extensive search for evidence of the one-quarter  
corner was made without success. As I was unable to  
locate any evidence of the original corner, I  
reestablished this corner at proportionate distance  
between the southwest and northwest section corners  
of Section 36.

An extensive search was made for evidence of the sec-  
tion corner common to Sections 25, 30, 31 and 36  
(southeast corner of Section 25). Topography along  
the south line of Section 25 was tied and correlated  
with topography called for in the original record. A  
search was made along the south and east lines of  
Section 25 for line trees called for in the original  
record (Record calls along the south line of Section  
25: a 20-inch diameter fir at 38.20 chains - 2,521.20  
feet east of the southwest corner of Section 25; and  
a 12-inch diameter fir at 46.04 chains - 3,038.64  
feet east of the southwest corner of Section 25; and  
record calls along the east line of Section 25: a  
30-inch diameter fir at 37.50 chains - 2,475.00 feet  
south of the witness corner common to Sections 25 and  
30). I was unable to locate any evidence of the line  
tree at 38.20 chains east of the southwest corner of  
Section 25. At a point N89°12'02"E, 3,057.18 feet  
(46.32 chains) from the southwest corner of Section  
25, I recovered a 26-inch diameter fir with a single  
blaze on the west face and 2 notches on the east face