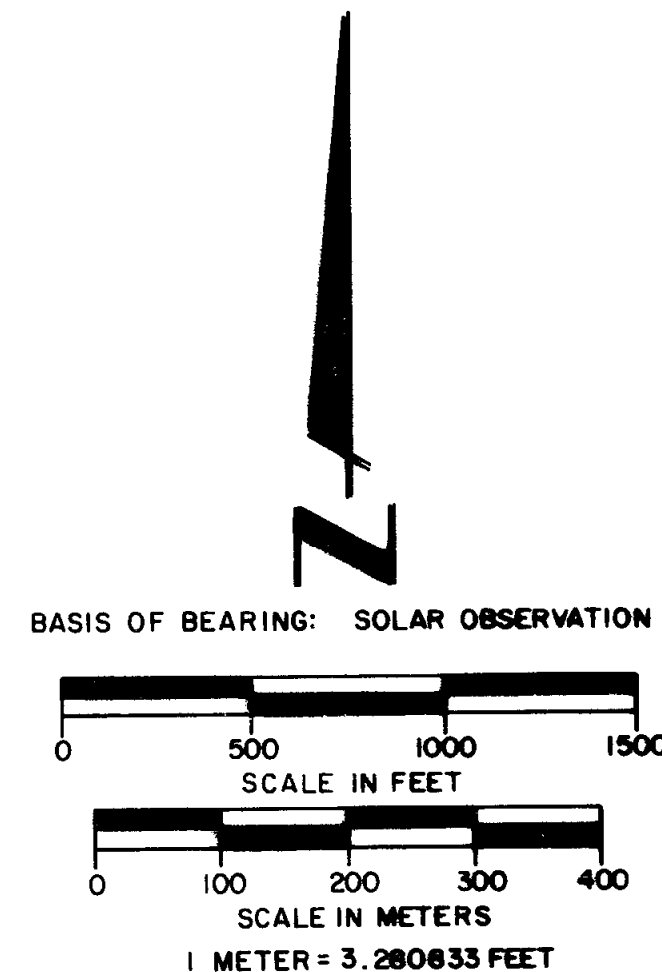
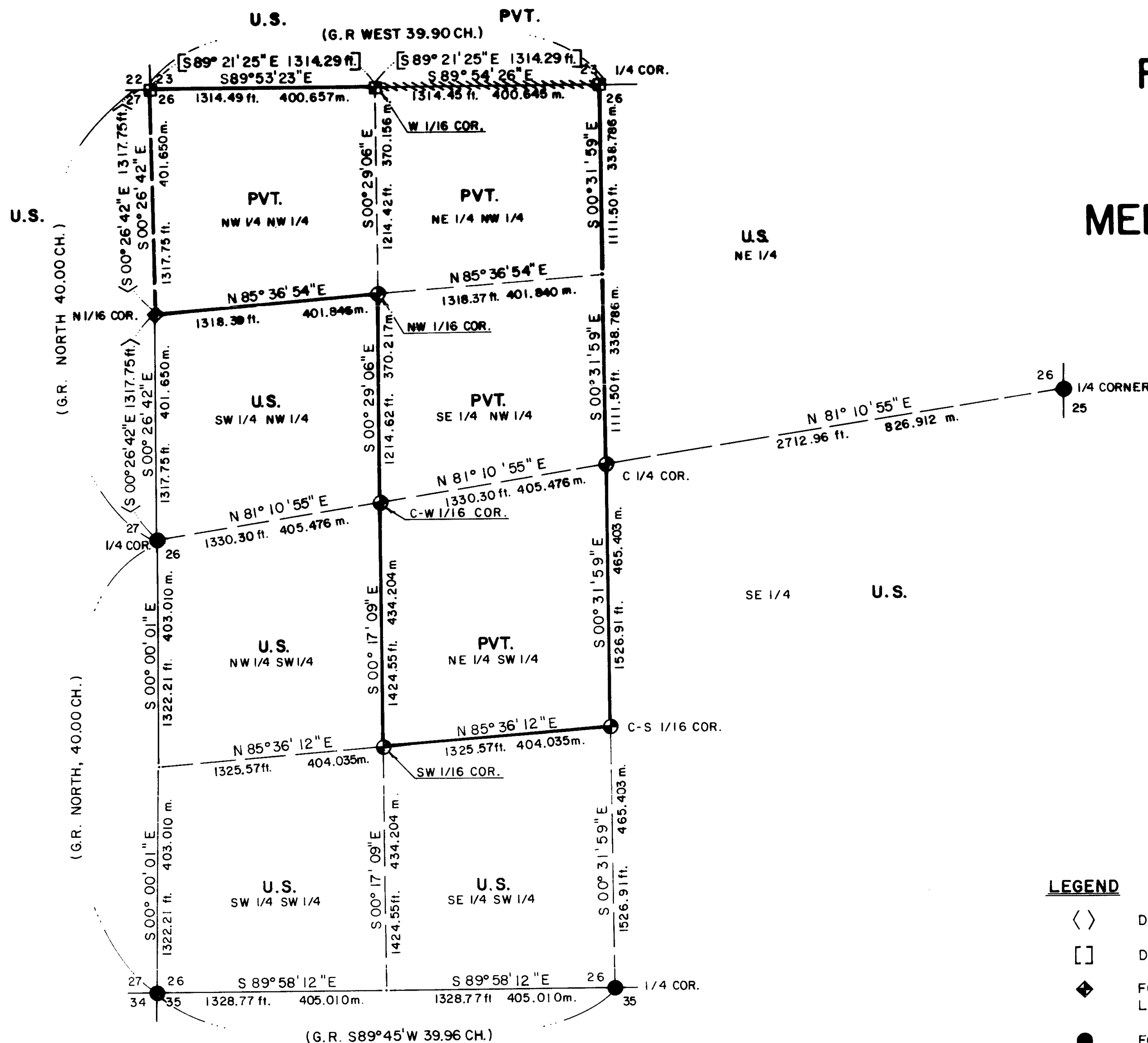


**MAP OF SURVEY  
FOR  
ROGUE RIVER NATIONAL FOREST  
P.O. BOX 520  
MEDFORD, OREGON  
and  
MEDFORD RESOURCES CORPORATION  
P.O. BOX 550  
MEDFORD, OREGON  
AUGUST 30, 1983**



**LEGEND**

- < > DENOTES R. S. 8829 RECORD.
- [ ] DENOTES R.S. 3611 RECORD.
- ◆ FOUND MONUMENT SET BY REGISTERED LAND SURVEYOR No. 1071, R.S. 8829.
- FOUND STANDARD BLM OR JACKSON COUNTY BRASS CAP MONUMENT.
- SET 2 1/2" x 30" LG. IRON POST WITH 2 1/2" DIA. BRASS CAP.
- FOUND MONUMENT SET BY REGISTERED LAND SURVEYOR 483, R.S. 3611.
- PROPERTY LINE MARKED AND POSTED.
- - - PROPERTY LINE PREVIOUSLY MARKED AND POSTED.
- SECTION LINE CALCULATED FROM TRAVERSE SURVEY.
- - - SECTION SUBDIVISION LINE CALCULATED FROM TRAVERSE SURVEY.
- ||||| PROPERTY LINE MARKED AND POSTED BETWEEN MEDFORD CORP. LANDS AND PRIVATE OWNERSHIP.

\*\* RECEIVED \*\*  
Date 10/13 By SLC  
This sur. 1 s. Ma  
5 pag. Warren  
JACKSON COUNTY  
SURVEYOR

**HISTORY OF SURVEYS**

The original lines and corners of Section 26 were established by Deputy Surveyor William M. Turner under Contract No. 455 dated July 17, 1882. The West, South and East one-quarter corners and the S.W. section corner were remonumented from original corner evidence by the Jackson County Surveyor in 1974 and 1979.

The North line of Section 26 was retraced by Charles H. Hurst R.L.S. No. 483; the Northwest section corner was remonumented from original evidence, the one-quarter corner of Section 26 was re-established and the West one-sixteenth corner was established as part of Record Survey 3611 dated December 20, 1967.

The East line of the East line of Section 26 was retraced by Harold L. Center, R.L.S. No. 1071; the North one-sixteenth corner was established as part of Record Survey No. 6829, dated March 31, 1981.

No other surveys of record were noted.

**CERTIFICATE OF SURVEY**

We, Harold L. Center and Arthur R. Rambo, Registered Professional Land Surveyors within the State of Oregon, do hereby certify that we have surveyed and marked with monuments the lands represented on this map of survey at the request of the U.S. Forest Service and Medford Resources Corporation.

**PROF. LAND SURV.**  
**ONAL BYOR**  
*Harold L. Center*

Harold L. Center  
Professional Land Surveyor  
Oregon Certificate No. 1071

**PROF. LAND SURV.**  
**ARTHUR R. RAMBO**  
*Arthur R. Rambo*

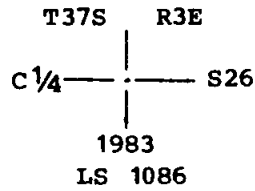
Arthur R. Rambo  
Professional Land Surveyor  
Oregon Certificate No. 1086

U.S. DEPARTMENT OF AGRICULTURE  
FOREST SERVICE  
REGION 6 ROGUE RIVER NATIONAL FOREST

**DEPENDENT RESURVEY  
AND  
SECTION SUBDIVISION  
SECTION 26, T.37S., R.3E., W.M.  
JACKSON COUNTY, OREGON**

REVIEWED BY: *[Signature]* DATE 10/13/83  
REVIEWED BY: *[Signature]* DATE 10/13/83  
PROJECT 83-31

At the corner point, I set a 2 1/2-inch diameter galvanized iron post with a 2 1/2-inch diameter brass cap marked:



From which the following references:

A 10-inch diameter fir bears N51°42'W, 51.40 feet distance, scribed "C 1/4 S26 LS 1086 BT" on a double blaze.

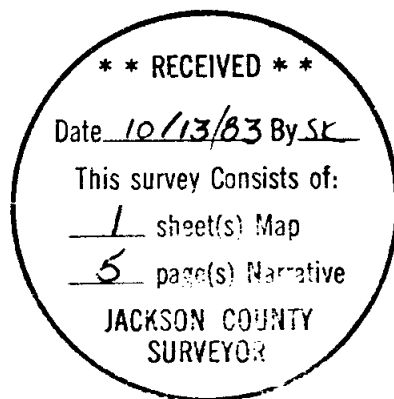
A 6-inch diameter fir bears N65°49'E, 25.90 feet distance, scribed "C 1/4 S26 LS 1086 BT" on a double blaze.

August 30, 1983

HAROLD L. CENTER  
Registered Professional Land Surveyor  
Oregon Certificate No. 1071



ARTHUR R. RAMBO  
Registered Professional Land Surveyor  
Oregon Certificate No. 1086



At the corner point, I set a 2½-inch diameter galvanized iron post with a 2½-inch diameter brass cap marked:

T37S      R3E  
 W 1/16  
 C ——— C  
           S26  
           1983  
           LS 1071

From which the following references:

A 12-inch diameter cedar bears N56°44'E, 43.40 feet distance, scribed "CW 1/16 S26 LS 1071 BT" on a double blaze.

A 10-inch diameter fir bears N47°04'W, 86.10 feet distance, scribed "CW 1/16 S26 LS 1071 BT" on a double blaze.

Southwest one-sixteenth corner of Section 26, Township 37 South, Range 3 East.

At the corner point, I set a 2½-inch diameter galvanized iron post with a 2½-inch diameter brass cap marked:

T37S      R3E  
 SW 1/16 ——— S26  
                   |  
                   1983  
                   LS 1071

From which the following references:

A 10-inch diameter fir bears S44° 10'E, 38.80 feet distance, scribed "SW 1/16 S26 LS 1071 BT" on a double blaze.

An 11-inch diameter fir bears N21°01'E, 14.60 feet distance, scribed "SW 1/16 S26 LS 1071 BT" on a double blaze.

Center-south one-sixteenth corner of Section 26, Township 37 South, Range 3 East.

At the corner point, I set a 2½-inch diameter galvanized iron post with a 2½-inch diameter brass cap marked:

T37S      R3E  
           C  
 S 1/16 ——— S26  
                   |  
                   C  
                   1983  
                   LS 1086

From which the following references:

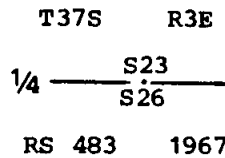
A 9-inch diameter fir bears N68°38'E, 55.10 feet distance, scribed "CS 1/16 S26 LS 1086 BT" on a double blaze.

An 8-inch diameter fir bears N59°06'W, 21.20 feet distance, scribed "CS 1/16 S26 LS 1086 BT" on a double blaze.

Center one-quarter corner of Section 26, Township 37 South, Range 3 East.

One-quarter corner common to Sections 23 and 26, Township 37 South, Range 3 East.

At the corner point, I found a 3/4-inch diameter iron post monument with a 2-3/4-inch diameter brass cap marked:



From which the following references:

An 18-inch diameter fir bears S64°20'E, 38.79 feet distance, with partial scribe marks visible in an opened face.

I mark a new reference:

A 13-inch diameter fir bears N13°31'E, 78.12 feet distance, scribed "1/4 S23 LS 1071 BT" on a double blaze.

West one-sixteenth corner common to Sections 23 and 26, Township 37 South, Range 3 East.

At the corner point, I found a 3/4-inch diameter iron post monument established by Charles H. Hurst, L.S. 483, under Record Survey No. 3611, dated December 20, 1967.

From which the following references:

A 27-inch diameter pine stump bears S32°28'W, 30.90 feet distance.

A 16-inch diameter oak bears N56°01'W, 8.34 feet distance, with healed blaze.

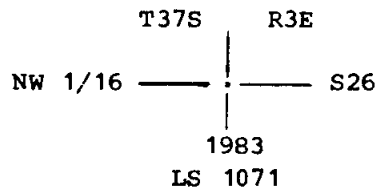
I mark a new reference:

An 8-inch diameter fir bears S02°30'W, 30.00 feet distance, scribed "W 1/16 S26 LS 1071 BT" on a double blaze.

CORNERS ESTABLISHED THIS SURVEY

Northwest one-sixteenth corner of Section 26, Township 37 South, Range 3 East.

At the corner point, I set a 2 1/2-inch diameter galvanized iron post with a 2 1/2-inch diameter brass cap marked:



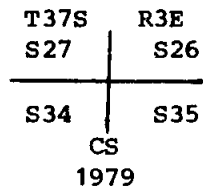
From which the following references:

An 11-inch diameter fir bears N86°58'E, 58.20 feet distance, scribed "NW 1/16 S26 LS 1071 BT" on a double blaze.

A 6-inch diameter fir bears S34°02'W, 28.20 feet distance, scribed "NW 1/16 S26 LS 1071 BT" on a double blaze.

Center-west one-sixteenth corner of Section 26, Township 37 South, Range 3 East.

At the corner point, I found a standard Jackson County Surveyor brass cap monument marked:



From which the following references:

A 13-inch diameter cedar bears S17°01'E, 11.90 feet distance, with partial scribe marks visible.

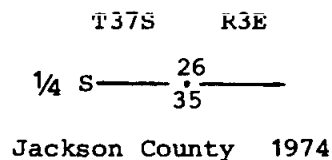
A 35-inch diameter fir bears N65°00'E, 2.20 feet distance, with bark scribe marks "T37S R3E S26 BT" visible.

A 20-inch diameter cedar bears N35°59'W, 13.30 feet distance, with healed blaze.

A 14-inch diameter cedar bears S53°00'W, 4.70 feet distance, with healed blaze.

One-quarter corner common to Sections 26 and 35, Township 37 South, Range 3 East.

At the corner point, I found a standard Jackson County Surveyor brass cap monument marked:



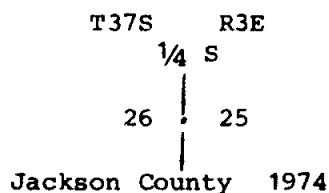
From which the following references:

A 21-inch diameter cedar bears S25°02'E, 24.46 feet distance, with partial scribe marks visible on an opened blaze.

A 20-inch diameter cedar bears N59°27'W, 29.75 feet distance, with scribe marks "CS BT" visible.

One-quarter corner common to Sections 25 and 26, Township 37 South, Range 3 East.

At the corner point, I found a standard Jackson County Surveyor brass cap monument marked:



From which the following references:

A 10-inch diameter fir bears N62°52'W, 16.32 feet distance, with healed blaze.

A 10-inch diameter fir bears N31°44'E, 31.62 feet distance, with healed blaze.

A 13-inch diameter ash bears S76°04'E, 12.36 feet distance, with opened blaze; no scribe marks visible.

SURVEY NARRATIVE TO COMPLY WITH  
PARAGRAPH 209.250 OREGON REVISED STATUTES

SURVEY FOR: Rogue River National Forest  
P. O. Box 520  
Medford, Oregon 97501

and

Medford Resources Corporation  
P. O. Box 550  
Medford, Oregon 97501

LOCATION: Section 26, Township 37 South, Range 3 East,  
Willamette Meridian, Jackson County, Oregon.

BASIS OF BEARING: Solar observation

PURPOSE: To monument corners and mark and post National  
Forest and Medford Resources Corporation lands  
within Section 26.

PROCEDURE: Prior to commencement of this survey, an investiga-  
tion of required corner control was made. All  
controlling corners had been remonumented by either  
the Jackson County Surveyor, Charles H. Hurst,  
R.L.S. No. 483, under Record Survey No. 3611, dated  
December 20, 1967, or Harold L. Center, R.L.S. No.  
1071, under Record Survey No. 8829, dated March 31,  
1981. With the required corner control identified,  
a random line traverse was ran around the perimeter  
of Section 26, tying the required controlling cor-  
ners to a closed traverse. From this information,  
positions for the interior corners were computed  
and established. From the established controlling  
corners, a traverse was ran along interior lines  
closing to the perimeter traverse. From this  
information, monuments were established and lines  
posted as shown on the attached map of survey.

This survey was performed utilizing Wild T-16 and  
T-2 Theodolites and Hewlett-Packard 3805 and 3808A  
Electronic Distance Meters.

Lines separating National Forest lands and Medford  
Resources Corporation lands were posted with alumi-  
num traffic delineator posts with National Forest  
boundary signs attached. Trees along the true line  
were blazed and painted with red timber marking  
paint.

Lines separating Medford Resources Corporation lands  
and other private ownership were posted with aluminum  
tags. Trees along the true line were blazed and  
painted with red timber marking paint.

CORNERS ACCEPTED FOR CONTROL

The northwest corner and west one-quarter corner of Section 26, and the  
north one-sixteenth corner common to Sections 26 and 27 were described in  
Record Survey No. 8829, and will not be redescribed within this narrative.

Section corner common to Sections 26, 27, 34 and 35, Township 37 South,  
Range 3 East.