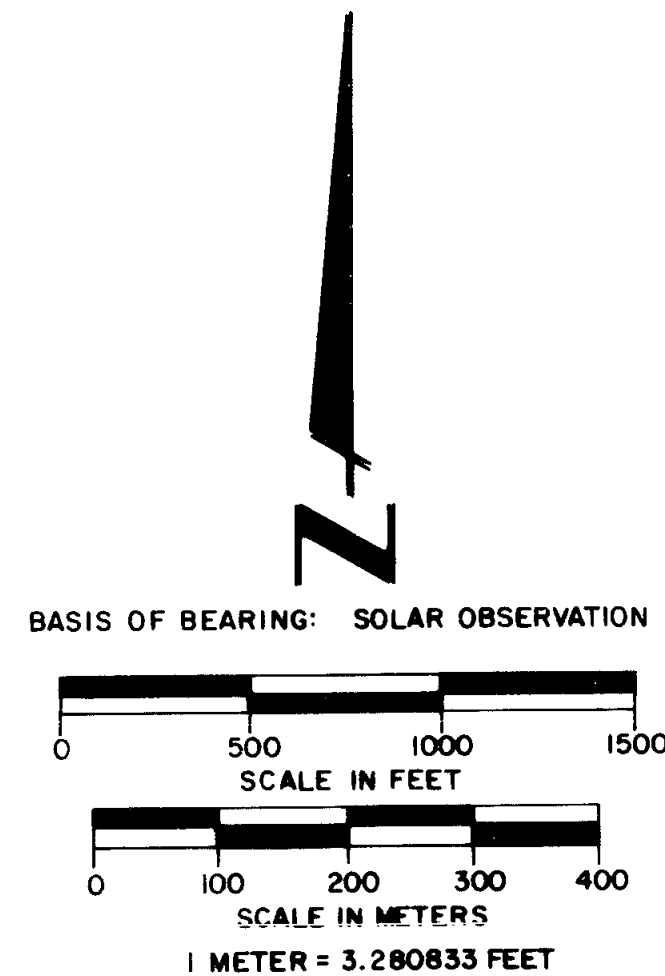
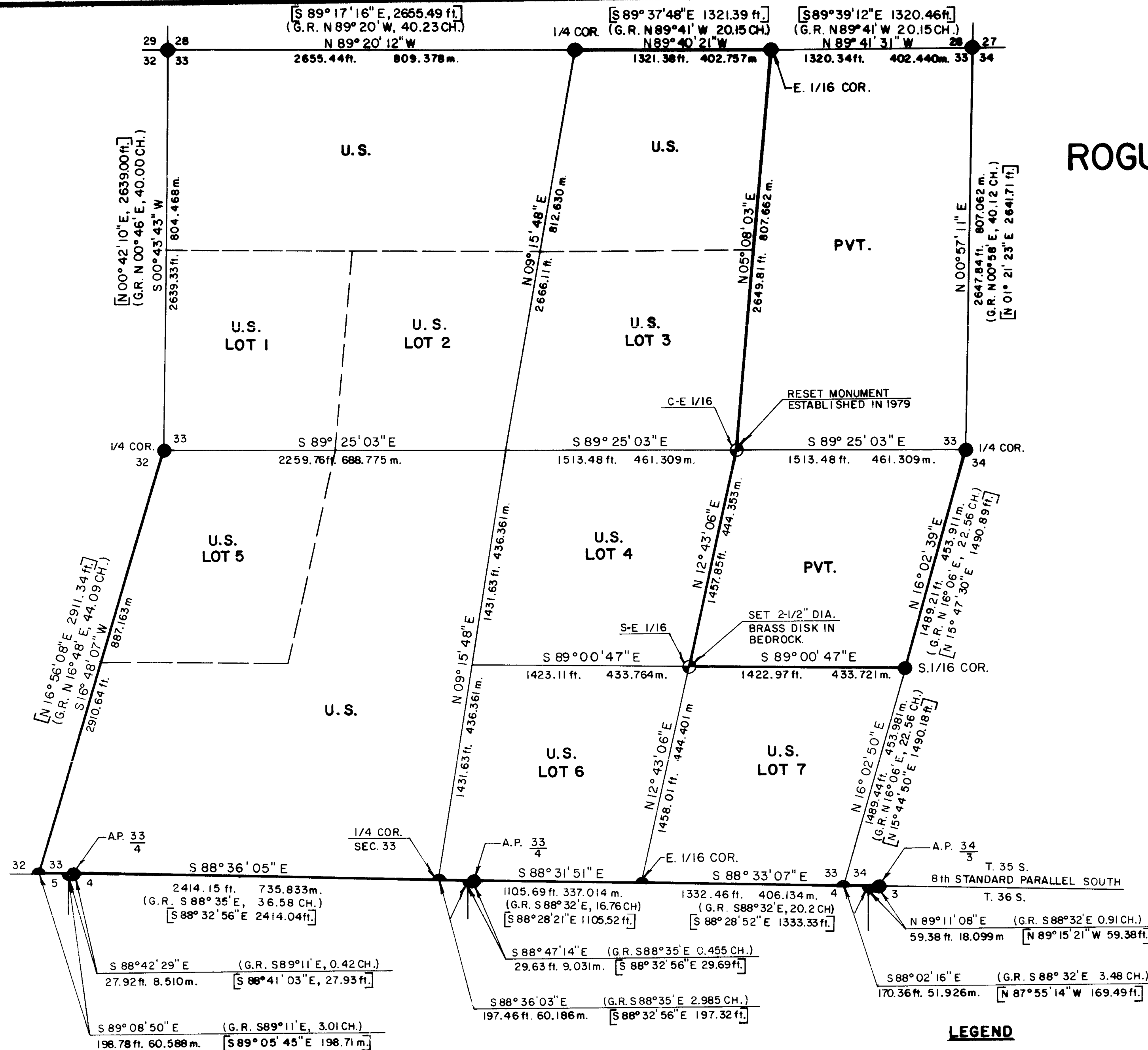
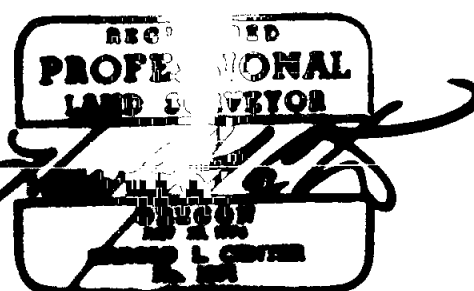


MAP OF SURVEY
FOR
ROGUE RIVER NATIONAL FOREST
P.O. BOX 520
MEDFORD, OREGON
AUGUST 24, 1983



CERTIFICATE OF SURVEY

I, Harold L. Center, Registration No. 1071 Registered Professional Land Surveyor, State of Oregon, hereby certify that this map correctly represents a survey made by me or under my direction in conformance with the laws of the State of Oregon, at the request of the U.S. Forest Service.



**** RECEIVED ****
 Date 10/4 By sk
 This survey consists of:
 1 sheet(s) Map
 B page(s) Narrative
 JACKSON COUNTY SURVEYOR

HISTORY OF SURVEYS

Establishment of the Eighth Standard Parallel South, Range 3 East, was performed by Deputy Surveyor Nathaniel Ford under contract No. 58 dated April 18, 1855.

Subdivisions of Township 35 South, Range 3 East, were performed by Deputy Surveyor Nathaniel Ford under contract No. 58 dated April 18, 1855.

The south boundary of Section 33 was resurveyed by Rufus S. Moore under contract No. 475 dated July 3, 1883.

A dependent resurvey of the Eighth Standard Parallel South, Range 3 East, and portions of Township 35 South, Range 3 East, was performed by Cadastral Surveyor Ronald Shirler of the BLM Western Field Office during 1977 and 1978, with the results of that survey officially approved on May 26, 1983.

A dependent resurvey and section subdivision of Section 33 was performed by Harold L. Center, Professional Land Surveyor and filed as Record Survey No. 8180 dated Dec. 10, 1979.

LEGEND

- FOUND STANDARD BLM OR COUNTY SURVEYOR BRASS CAP MONUMENT, UNLESS OTHERWISE NOTED.
- ⊕ SET 2-1/2" DIA. x 30" LONG IRON POST WITH 2-1/2" BRASS CAP, UNLESS OTHERWISE NOTED.
- PROPERTY LINE MARKED AND POSTED THIS SURVEY.
- SECTION LINES CALCULATED FROM TRAVERSE SURVEY.
- - - DENOTES GOVERNMENT LOTTING.
- [] DENOTES R.S. 8180 RECORD.

U.S. DEPARTMENT OF AGRICULTURE
FOREST SERVICE
 REGION 6 ROGUE RIVER NATIONAL FOREST

DEPENDENT RESURVEY
AND
SECTION SUBDIVISION
SECTION 33, T. 35 S., R. 3 E., W.M.
JACKSON COUNTY, OREGON

REVIEWED BY: [Signature] DATE: 9/2/83

REVIEWED BY: [Signature] DATE: 9/2/83

PROJECT 83-42

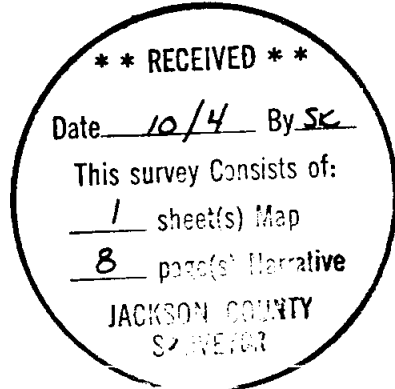
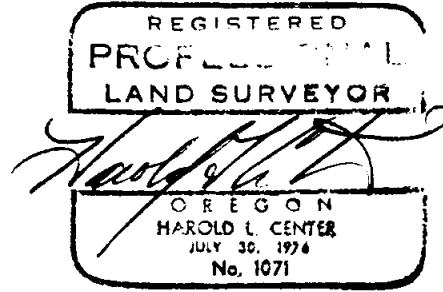
From which the following references:

A 24-inch diameter pine bears S 09° 49' E 23.80 feet distance. Scribed SE 1/16 S33 LS 1071 BT.

A 6-inch diameter fir bears S 74° 03' W 39.00 feet distance. Scribed SE 1/16 S33 LS 1071 BT.

August 24, 1983

HAROLD L. CENTER
Registered Professional Land Surveyor
Oregon Certificate No. 1071



A 23-inch diameter fir bears S 74° 12' W 7.80 feet distance. Scribe 4 visible in opened face.

A 14-inch diameter fir (now dead) bears S 27° 16' W 31.20 feet distance. Scribe visible.

East one-sixteenth corner common to Sections 28 and 33, Township 35 South, Range 3 East.

At the corner point I found a standard Bureau of Land Management monument marked:

U.S. Dept. of Interior
Unlawful to Disturb
T35S R3E
E 1/16 $\frac{S28}{S33}$
1977
Cadastral Survey
Bureau of Land Management

From which the following references:

A 9-inch diameter fir bears S 00° 27' W 48.95 feet distant.

A 10-inch diameter fir bears N 28° 45' W 21.70 feet distant.

CORNER ESTABLISHED THIS SURVEY

Center-east one-sixteenth corner Section 33, Township 35 South, Range 3 East.

At the corner point I set a 2½-inch diameter galvanized iron post with a 2½-inch diameter brass cap monument marked:

T35S R3E
CE 1/16 ——— S33
1979
1983
LS 1071

From which the following references:

A 13-inch diameter fir bears S 86° 00' W 31.59 feet distance. Scribed CE 1/16 S33 LS 1071 BT.

A 12-inch diameter pine bears N 14° 10' W 30.90 feet distance. Scribed CE 1/16 S33 LS 1071 BT.

Southeast one-sixteenth corner Section 33, Township 35 South, Range 3 East.

At the corner I set a 2½-inch diameter brass disk cemented in bedrock with monument marked:

T35S R3E
SE 1/16 ——— S33
1983
LS 1071

From which the following references:

A 10-inch diameter fir bears S 57° 57' W 32.90 feet distance. Scribe 1/4 S32 BT visible.

A 12-inch diameter cedar bears S 65° 22' E 32.1 feet distance. Scribe 1/4 S33 BT visible.

Section corner common to Section 28, 29, 32 and 33, Township 35 South, Range 3 East.

At the corner point I found a standard Bureau of Land Management monument marked:

U.S. Dept. of Interior
Unlawful to Disturb
T35S R3E

S29	S28
S32	S33

1977
Cadastral Surveys
Bureau of Land Management

From which the following references:

A 7-inch diameter fir bears S 10° 2' E 17.60 feet distance. Scribe visible.

A 10-inch diameter fir bears S 63° 49' W 28.40 feet distance. Scribe visible.

A 10-inch diameter fir bears N 57° 58' W 27.80 feet distance. Scribe visible.

A 14-inch diameter fir bears N 00° 01' E 63.8 feet distance. Scribe visible.

A dead and down fir, size indeterminate, bears N 44° 30' W 17.20 feet distance to center of stump hole.

A 9-inch diameter fir bears S 11° 15' E 18.40 feet distance.

One-quarter section corner common to Sections 28 and 33, Township 35 South, Range 3 East.

At the corner point I found a standard Bureau of Land Management monument marked:

U.S. Dept. of Interior
Unlawful to Disturb

1/4	S28
	S33

1966
Cadastral Surveys
Bureau of Land Management

From which the following references:

A 16-inch diameter fir bears N 49° 52' E 37.40 feet distance. Healed scar.

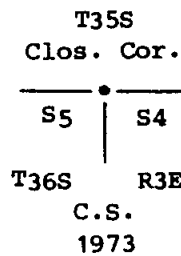
A 30-inch diameter fir bears N 47° 02' W 5.90 feet distance. Healed scar.

From which the following references:

- A fir stub, size undeterminate, bears S 22° 41' E 21.17 feet distance.
- A 15-inch diameter cedar bears N 58° 38' W 34.60 feet distance.
- A 15-inch diameter fir bears S 14° 25' E 76.55 feet distance.

Closing section corner common to Sections 4 and 5, Township 36 South, Range 3 East.

At the corner point I found a standard Jackson County Surveyor brass cap monument marked:

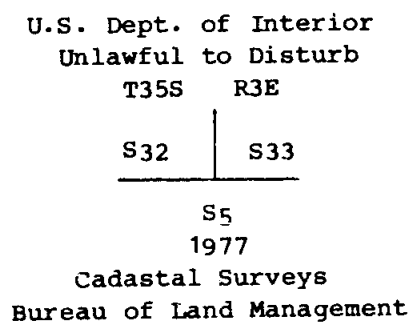


From which the following references:

- A 12-inch diameter fir bears S 34° 28' W 38.33 feet distance.
- A fir stub, size indeterminate, bears S 17° 21' W 42.77 feet distance.
- A 14-inch diameter fir bears S 06° 39' E 75.12 Feet distance.

Section corner common to Sections 32 and 33, Township 35 South, Range 3 East, and Section 5, Township 36 South, Range 3 East.

At the corner point I found a standard Bureau of Land Management monument marked:

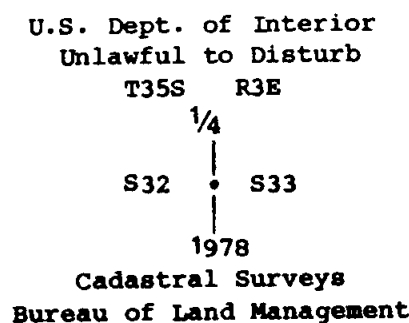


From which the following references:

- An 18-inch diameter fir bears N 33° 39' W 49.60 feet distance.
- A 15-inch diameter cedar bears N 35° 00' E 32.60 feet distance.

One-quarter corner common to Sections 32 and 33, Township 35 South, Range 3 East.

At the corner point I found a standard Bureau of Land Management monument marked:



From which the following references:

A 24-inch diameter fir bears N 72° 43' E 6.00 feet distance. Scribe visible on an opened face.

A 14-inch diameter cedar bears N 37° 30' E 14.00 feet distance. Scribe CS BT visible.

An 8-inch diameter cedar bears S 57° 57' W 22.90 feet distance. Scribe CS BT visible.

One-quarter corner common to Section 4, Township 36 South, Range 3 East.

At the corner point I found a standard Bureau of Land Management monument marked:

U.S. Dept. of Interior
Unlawful to Disturb

1/4 S4
T36S R3E
1978
Cadastral Surveys
Bureau of Land Management

From which the following references:

A 7-inch diameter cedar bears S 19° 49' W 13.10 feet distance. Scribed 1/4 S4 BT.

One-quarter corner common to Section 33, Township 35 South, Range 3 East.

At the corner point I found a standard Bureau of Land Management monument marked:

U.S. Dept. of Interior
Unlawful to Disturb

T35S R3E
1/4 S33
1977
Cadastral Surveys
Bureau of Land Management

From which the following references:

A 9-inch diameter fir bears N 31° 15' W 35.5 feet distance. Scribed 1/4 S33 BT.

A 9-inch diameter fir bears N 25° 10' E 45.10 feet distance. Scribed X BT.

Angle point common to Section 33, Township 35 South, Range 3 East, and Section 4, Township 36 South, Range 3 East.

At the corner point I found a standard Bureau of Land Management monument marked:

U.S. Dept. of Interior
Unlawful to Disturb

A.P.
T35S R3E
S33
S 4
T36S
1977
Cadastral Surveys
Bureau of Land Management

And new reference established this survey:

A 10-inch diameter fir bears N 54° 19' E 29.60 feet distance. Scribed
S 1/16 S34 LS1071 BT.

Section corner common to Sections 33 and 34, Township 35 South, Range 3
East, and Section 4, Township 36 South, Range 3 East only.

At the corner position I found a standard Bureau of Land Management monu-
ment marked:

U.S. Dept. of Interior
Unlawful to Disturb
T35S R3E
S33 | S34

S4
1977
Cadastral Surveys
Bureau of Land Management

From which the following references:

A 9-inch diameter pine bears N 19° 02' E 53.10 feet distance.

A 21-inch diameter fir bears N 53° 53' W 63.3 feet distance.

East one-sixteenth corner Section 33 only, Township 35 South, Range 3 East.

At the corner point I found a standard Bureau of Land Management monument
marked:

U.S. Dept. of Interior
Unlawful to Disturb
T35S R3E
E 1/16 S33

1977
Cadastral Surveys
Bureau of Land Management

From which the following references:

A 5-inch diameter fir bears N 68° 53' E 13.45 feet distance. X BT
scribe visible.

A 6-inch diameter fir bears N 60° 00' E 29.50 feet distance. Scribe
visible.

Angle point common to Section 33, Township 35 South, Range 3 East, and
Section 4, Township 36 South, Range 3 East.

At the corner point I found a standard Bureau of Land Management monument
marked:

U.S. Dept. of Interior
Unlawful to Disturb
A.P.
T35S R3E
S33

S 4
T36S
1978
Cadastral Surveys
Bureau of Land Management

From which the following references:

A 25-inch diameter fir bears N 46° 30' W 34.70 feet distance, healed blaze.

A 22-inch diameter fir bears N 05° 46' E 10.60 feet distance, healed blaze.

A 15-inch diameter fir bears S 76° 46' E 21.50 feet distance, healed blaze.

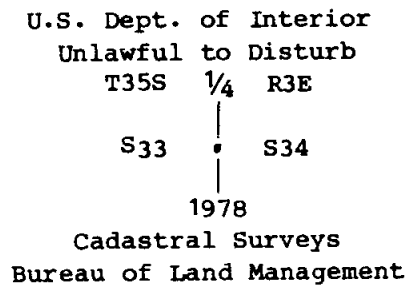
A 26-inch diameter fir bears S 48° 18' E 31.40 feet distance, healed blaze.

A 20-inch diameter fir bears S 13° 36' W 45.00 feet distance, healed blaze.

A 17-inch diameter fir bears N 44° 21' W 8.50 feet distance, healed blaze.

One-quarter corner common to Sections 33 and 34, Township 35 South, Range 3 East.

At the corner point I found a standard Bureau of Land Management monument marked:



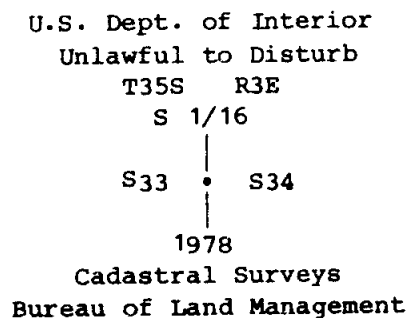
From which the following references:

A fir 10-inches in diameter bear S 19° 08' E 21.20 feet distance. Partially healed blaze.

A fir 9-inches in diameter bears S 66° 42' W 46.80 feet distance. Scribe 1/4 S33 BT visible.

South one-sixteenth corner common to Sections 33 and 34, Township 35 South, Range 3 East.

At the corner point I found a standard Bureau of Land Management monument marked:



From which the following references:

A 14-inch diameter fir bears N 44° 03' W 43.39 feet distance. Scribe S 1/16 S33 BT visible.

A 9-inch diameter fir bears S 65° 50' E 20.24 feet distance. Scribe S 1/16 S33 BT visible. This tree now dead.

SURVEY NARRATIVE TO COMPLY WITH
PARAGRAPH 209.250 OREGON REVISED STATUTES

SURVEY FOR: Rogue River National Forest
P. O. Box 520
Medford, OR 97501

LOCATION: Section 33, Township 35 South, Range 3 East,
Willamette Meridian, Jackson County, Oregon.

BASIS OF BEARING: Solar observation - see special note.

PURPOSE: To correct record Survey No. 8180 due to the
adjustment in position of controlling corners by
the Bureau of Land Management.

PROCEDURE: A close traverse was ran around the exterior of
Section 33 tying all controlling section corners.
Following this traverse I performed a survey com-
mencing from the east one-sixteenth corner on the
north line, southerly along the interior property
line tying to center-east and southeast one-
sixteenth corners and closing to the south one-
sixteenth on the east line of the section. From
this data I proceeded to subdivide the section and
compute new positions for the center-east and
southeast one-sixteenth corners. I then remove
said monuments as described within Record Survey
No. 8180 and reset each corner to the positions
described on the attached map and accompanying
narrative.

Property lines were reposted utilizing metal posts
with National Forest boundary signs attached.
Incorrectly blazed trees were defaced and blazes
painted black. Correctly blazed trees were
repainted with red timber marking paint, additional
trees along the line were blazed and painted with
red timber marking paint.

EQUIPMENT UTILIZED IN SURVEY: This survey was performed utilizing a
Wild T-2 Theodolite and Wild DI-4
Electronic Distance Meter.

SPECIAL NOTE: The solar observation utilized for this survey was
taken near the section corner common to Sections
27, 28, 33 and 34. No effort was made to rotate
the bearing of this survey to the basis of bearing
utilized for Record Survey No. 8180.

CORNERS ACCEPTED FOR CONTROL

Note all exterior section, quarter section, and angle points are described
within this narrative although not all would normally be required to
separate National Forest and private lands within Section 33.

Section corner common to Sections 27, 28, 33 and 34, Township 35 South,
Range 3 East.

At the corner point I found a standard Bureau of Land Management monument
marked:

U.S. Dept. of Interior
Unlawful to Disturb
T35S R3E

S28	S27
S33	S34

1962
Cadastral Surveys
Bureau of Land Management